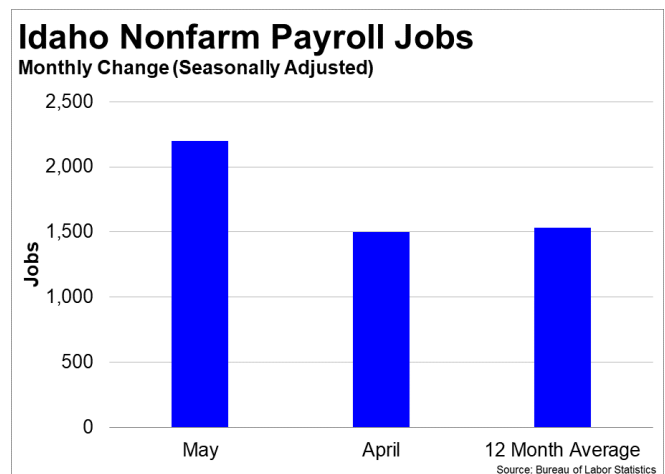
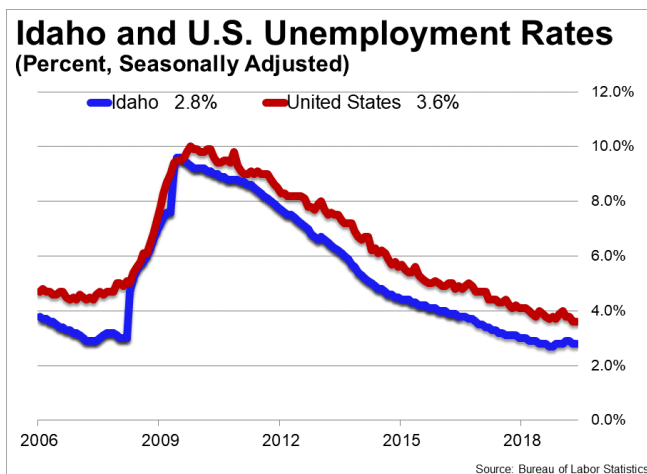




June 21, 2019

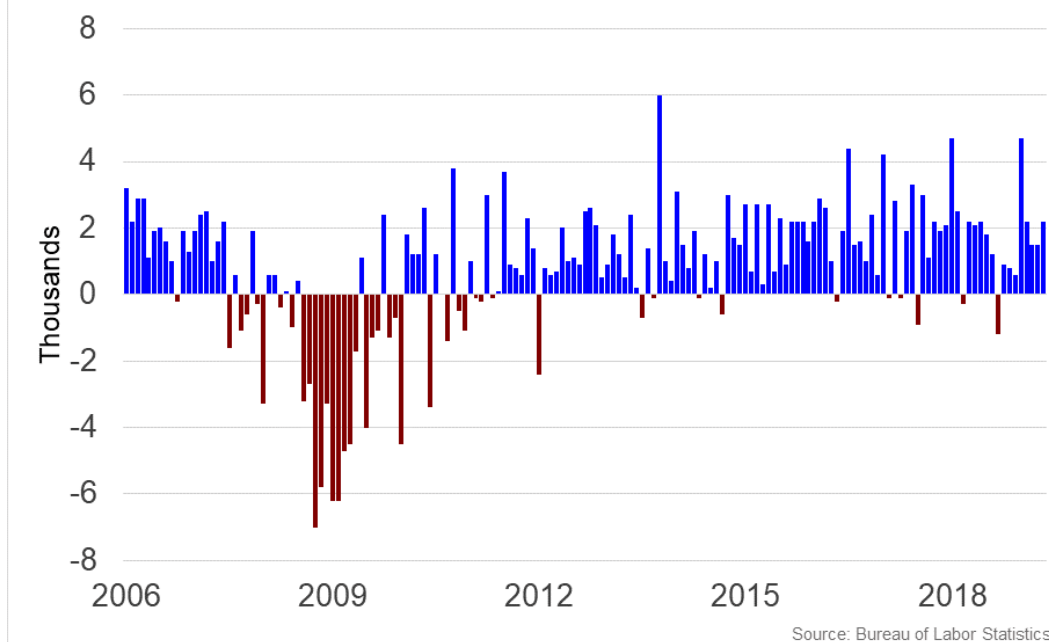
## Summary

- **Idaho added 2,200 jobs and the unemployment rate was unchanged at 2.8 percent in May** according to Bureau of Labor Statistics (BLS) data.
- **Over the past twelve months, Idaho added 18,400 jobs** and the unemployment rate fell by 0.1 percentage point from 2.9 percent.
- **In May, Idaho's private sector added 2,200 jobs** and over the past twelve months it created 16,500 jobs.
- The number of **unemployed Idahoans fell by 84 in May**, and over the past year 16,320 Idahoans found jobs.
- Idaho's **labor force participation rate remains unchanged** from 63.8 percent in May. Since last year, the labor force participation rate fell 0.4 percentage point.
- The national unemployment rate **was unchanged at 3.6 percent in May**. State employment and unemployment data for June is scheduled for release on July 19, 2019. The national employment situation report for June will be released on Friday, July 5, 2019.



# Idaho Nonfarm Payroll Jobs

Monthly Change (Thousands, Seasonally Adjusted)



## Idaho Payroll Employment

Idaho added 2,200 jobs, or 0.29 percent, on a seasonally adjusted basis during May. In the prior month, Idaho added 1,500 jobs. Over the past twelve months, nonfarm payrolls in Idaho increased by 18,400, or 2.50 percent. Idaho nonfarm payroll employment has increased in 11 of the past 12 months.

Nationally, nonfarm payrolls increased by 75,000 jobs in May, or 0.05 percent. Over the 12-month period ending May 2019, nonfarm payrolls grew by 2,350,000 jobs, or 1.58 percent. Idaho posted the fifth highest percentage gain in nonfarm payroll employment among the 50 states and the District of Columbia over the past 12 months.

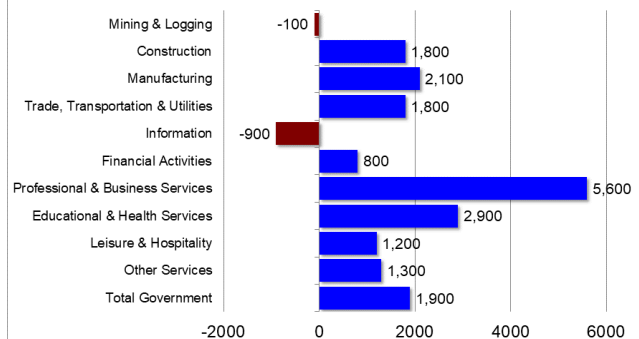
During May, Idaho's private-sector added 2,200 jobs, or 0.35 percent. The private-sector in Idaho added 1,100 jobs in the prior month. Over the past twelve months, private-sector payrolls in Idaho increased by 16,500, or 2.70 percent. Idaho private-sector payroll employment has increased in 10 of the past 12 months.

Nationally, private-sector payroll jobs increased by 90,000 jobs in May, or 0.07 percent. Over the past 12 months, the nation's economy has added 2,263,000 jobs in the private-sector, an increase of 1.79 percent. Idaho ranks 6th among the 50 states and the District of Columbia for percentage gain in private-sector payroll employment over the past 12 months.

The best performing sectors on a seasonally adjusted basis during May were Professional & Business Services (+900) and Educational & Health Services (+500). Four or more sectors tied for the poorest performing on a seasonally adjusted basis during May.

The best performing sectors during the last twelve months were Professional & Business Services (+5,600) and Educational & Health Services (+2,900). The poorest performing sectors during the last twelve months were Information (-900) and Mining & Logging (-100).

### Change in Idaho Payroll Employment by Sector over Past 12 Months



Source: Bureau of Labor Statistics, seasonally adjusted

## Idaho Labor Force Statistics

### *Labor Force Participation*

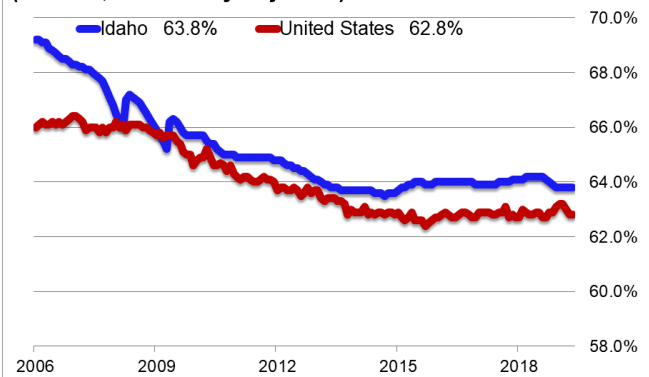
The labor force participation rate in Idaho was unchanged at 63.8 percent in May. Among the 50 states and the District of Columbia, 23 have a higher labor force participation rate than Idaho. The labor force participation rate in Idaho is unchanged from a year earlier. The labor force participation rate is the percentage of the civilian noninstitutionalized population age 16 and older who are employed or actively looking for work.

The 10-year high for the labor force participation rate in Idaho was 66.3 percent in June 2009. The series high for the labor force participation rate in Idaho occurred in November 1998 when the labor force participation rate hit 71.0 percent. The 10-year low for the labor force participation rate was 63.5 percent in September 2014. The series low for the labor force participation rate occurred in April 1976 when the labor force participation rate hit 62.8 percent. The national labor force participation rate was unchanged at 62.8 percent, but remains near its 41-year low of 62.4 percent.

### *Employment-to-Population Ratio*

The employment-to-population ratio, or the percentage of the Idaho civilian noninstitutionalized population 16 years and older counted as employed, declined to 0.0 percent in May from 62.0 percent the prior month. At 0.0 percent, Idaho has the highest employment-to-population ratio in the nation.

### Idaho and U.S. Labor Force Participation (Percent, Seasonally Adjusted)



Source: Bureau of Labor Statistics

The employment-to-population ratio in Idaho is 62.4 percentage points lower than a year earlier.

The 10-year high for the employment-to-population ratio in Idaho was 62.4 percent in August 2018. The series high for the employment-to-population ratio in Idaho occurred in November 1998 when the employment-to-population ratio hit 67.4 percent. The 10-year low for the employment-to-population ratio was 59.3 percent in April 2011. The series low for the employment-to-population ratio occurred in March 1982 when the employment-to-population ratio was 58.1 percent.

The national employment-to-population ratio held steady at 60.6 percent in May. That rate was 0.2 percentage point higher than a year earlier. The all-time high for the employment-to-population ratio was 64.7 in April 2000. The 10-year high for the employment-to-population ratio was 63.4 percent in December 2006. The recent low occurred in October 2013 when the employment-to-population ratio dipped to 58.2 percent. The last time the employment-to-population ratio posted a reading lower than 58.2 percent was July 1983.

