

Hawaii Employment Situation Summary

National Employment Data

- Since President Biden took office, 8.3 million jobs have been created nationwide, an average of 553,000 created each month.
- In the month of April, the latest for which national data are available, 428,000 jobs were created, and the unemployment rate remained at 3.6%—a pandemic-era low and now just 0.1 percentage points above the pre-pandemic rate.
- The unemployment rate declined for adult women (3.2%), Black workers (5.9%) and Hispanic workers (4.1%) and remained steady for white workers (3.2%). The unemployment rate rose slightly for adult men (3.5%) and Asian workers (3.1%).

State Employment Data

- Since President Biden took office, 50,200 jobs have been created in Hawaii.
- In the month of April, the latest for which state-level data are available, 3,800 jobs were created in Hawaii.

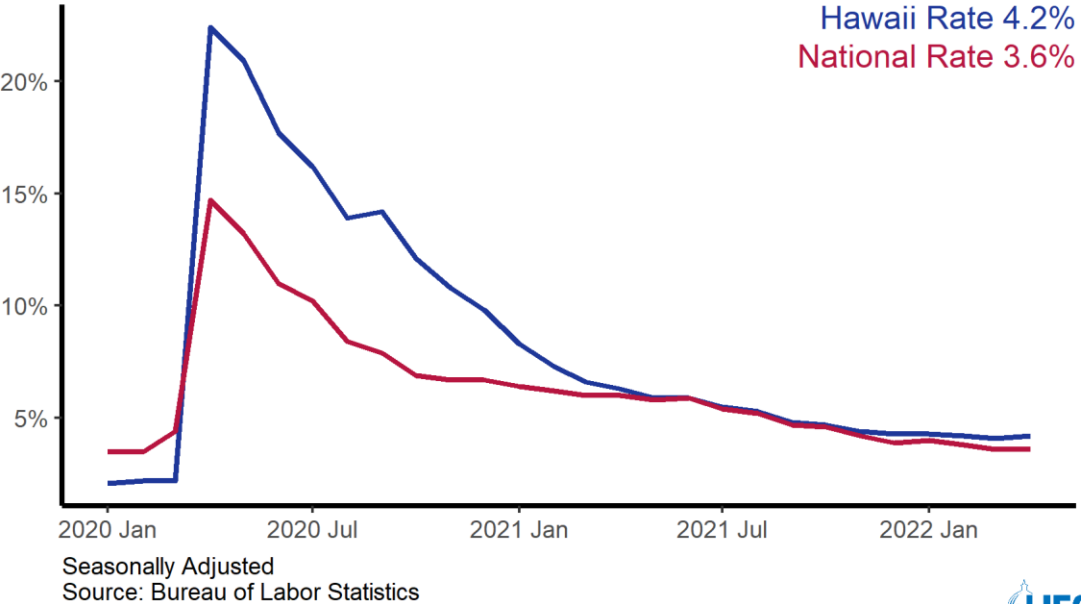
Sector	Change in Total Jobs in April	Jobs Recovered	Change in Total Jobs Since January 2021
Total Nonfarm, Hawaii	3,800	63%	50,200
Leisure and Hospitality, Hawaii	2,100	76%	33,500
Education and Health Services, Hawaii	1,100	75%	2,000
Government, Hawaii	600	50%	400
Professional and Business Services, Hawaii	200	60%	3,400
Manufacturing, Hawaii	0	58%	900
Retail Trade, Hawaii	-100	58%	3,100
Construction, Hawaii	-300	53%	-900

Source: Bureau of Labor Statistics

Note: Positive change reflects net job creation. "Recovered" refers to the share of jobs recovered since the pandemic low point as a share of jobs lost during the pandemic. Jobs lost during the pandemic are measured as the difference between the number of jobs in the industry in February 2020 and the number at the "low point" of the pandemic--the month with the fewest people employed in a given industry. The month of the low point varies by industry.

Hawaii Unemployment Rate

State and national unemployment rates, since January 2020



Hawaii Jobs Recovery

Total employment since January 2020, in thousands

