

## North Carolina Employment Situation Summary

### National Employment Data

- The U.S. economy added 187,000 jobs in August, and the United States has seen 31 consecutive months of job growth under President Biden.
- Since President Biden came into office, the United States has added more than 13.4 million jobs, and at 3.8%, the unemployment rate remains near historic lows.
- In August, the unemployment rate was 5.3% for Black workers, 4.9% for Hispanic workers, 3.1% for Asian workers, 3.4% for white workers, and 8.3% (not seasonally adjusted) for American Indian and Alaska Native workers.

### State Employment Data

- Since President Biden took office, 437,200 jobs have been created in North Carolina.
- In the month of August, 17,500 jobs were created in North Carolina.

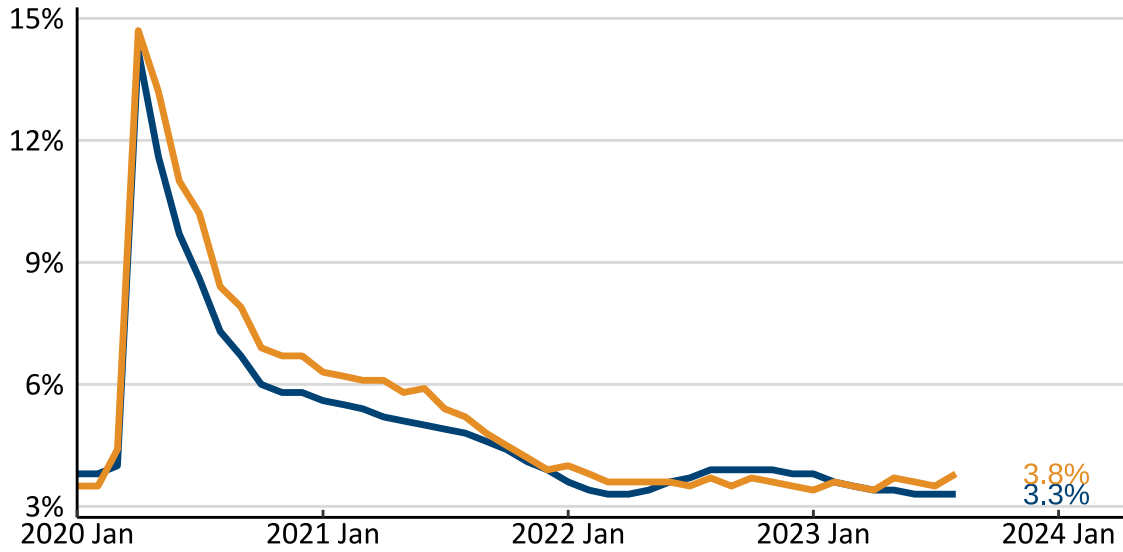
Sector	Change in Total Jobs in August	Jobs Recovered	Change in Total Jobs Since January 2021
<b>Total Nonfarm</b>	<b>17,500</b>	<b>156%</b>	<b>437,200</b>
Total Private	15,000	161%	404,200
Trade, Transportation, and Utilities	4,700	214%	53,500
Leisure and Hospitality	3,800	107%	100,800
Professional and Business Services	3,100	291%	105,200
Government	2,500	73%	33,000
Information	1,900	256%	11,100
Construction	400	217%	13,500
Other Services	200	115%	17,800
Mining and Logging	-100	40%	0
Manufacturing	-3,200	96%	13,400

Source: Bureau of Labor Statistics

Note: Positive change reflects net job creation. "Recovered" refers to the share of jobs recovered since the pandemic low point as a share of jobs lost during the pandemic. Jobs lost during the pandemic are measured as the difference between the number of jobs in the industry in February 2020 and the number at the "low point" of the pandemic—the month with the fewest people employed in a given industry. The month of the low point varies by industry.

# North Carolina Unemployment Rate

State and national unemployment rates, since January 2020



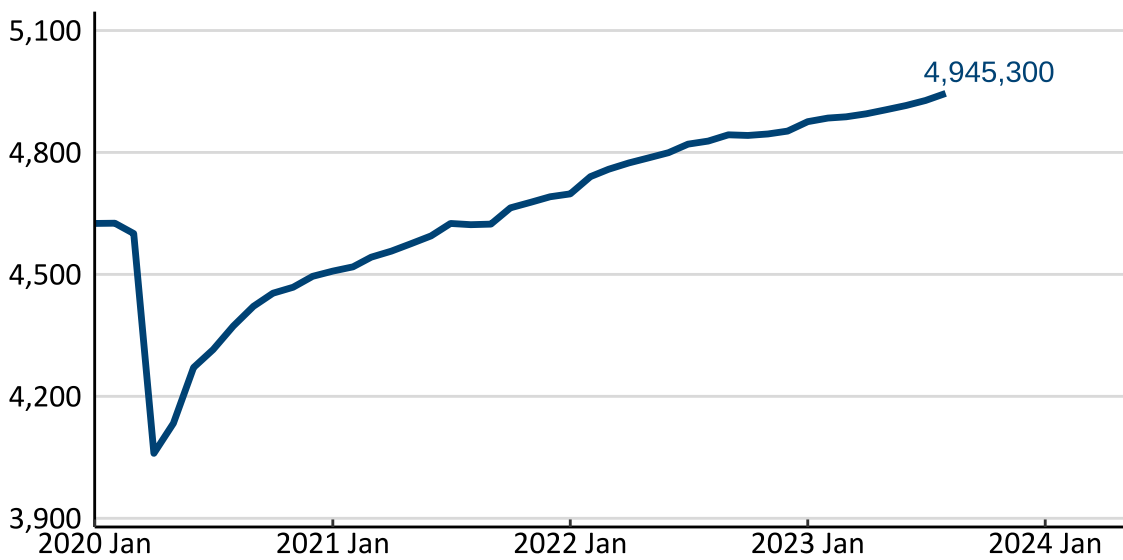
Seasonally Adjusted

Source: Bureau of Labor Statistics



# North Carolina Jobs Recovery

Total employment since January 2020, in thousands



Nonfarm Payroll Employment, Seasonally Adjusted

Source: Bureau of Labor Statistics

