

## Michigan Employment Situation Summary

### National Employment Data

- Since President Biden took office, 8.3 million jobs have been created nationwide, an average of 553,000 created each month.
- In the month of April, the latest for which national data are available, 428,000 jobs were created, and the unemployment rate remained at 3.6%—a pandemic-era low and now just 0.1 percentage points above the pre-pandemic rate.
- The unemployment rate declined for adult women (3.2%), Black workers (5.9%) and Hispanic workers (4.1%) and remained steady for white workers (3.2%). The unemployment rate rose slightly for adult men (3.5%) and Asian workers (3.1%).

### State Employment Data

- Since President Biden took office, 242,600 jobs have been created in Michigan.
- In the month of April, the latest for which state-level data are available, 1,600 jobs were lost in Michigan.

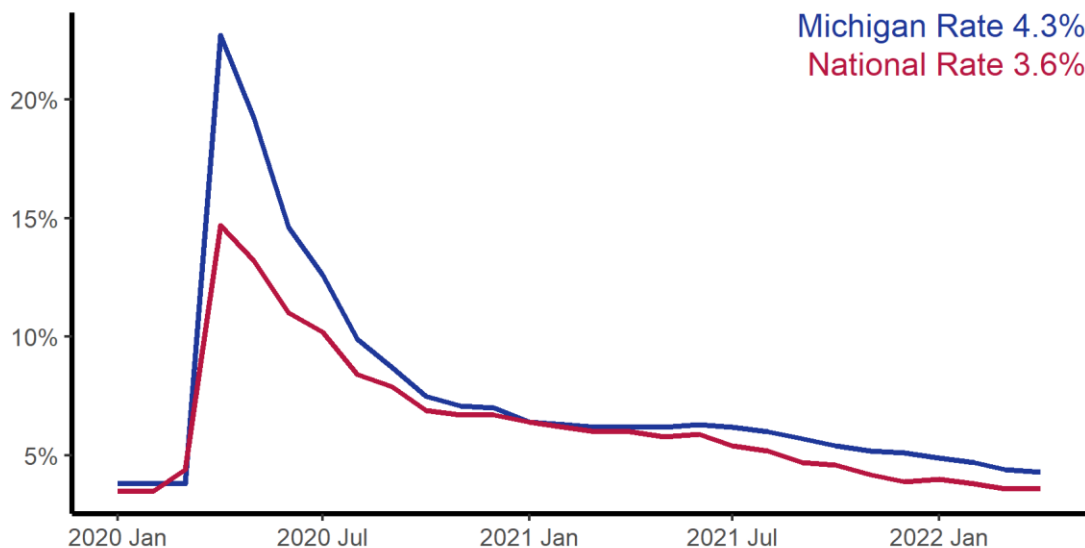
Sector	Change in Total Jobs in April	Jobs Recovered	Change in Total Jobs Since January 2021
<b>Total Nonfarm, Michigan</b>	<b>-1,600</b>	<b>88%</b>	<b>242,600</b>
Education and Health Services, Michigan	3,200	65%	2,800
Government, Michigan	2,200	42%	17,600
Construction, Michigan	-200	103%	6,900
Professional and Business Services, Michigan	-1,000	99%	34,500
Manufacturing, Michigan	-1,300	92%	15,600
Retail Trade, Michigan	-1,400	96%	11,800
Leisure and Hospitality, Michigan	-4,300	83%	113,700

Source: Bureau of Labor Statistics

Note: Positive change reflects net job creation. "Recovered" refers to the share of jobs recovered since the pandemic low point as a share of jobs lost during the pandemic. Jobs lost during the pandemic are measured as the difference between the number of jobs in the industry in February 2020 and the number at the "low point" of the pandemic--the month with the fewest people employed in a given industry. The month of the low point varies by industry.

# Michigan Unemployment Rate

State and national unemployment rates, since January 2020

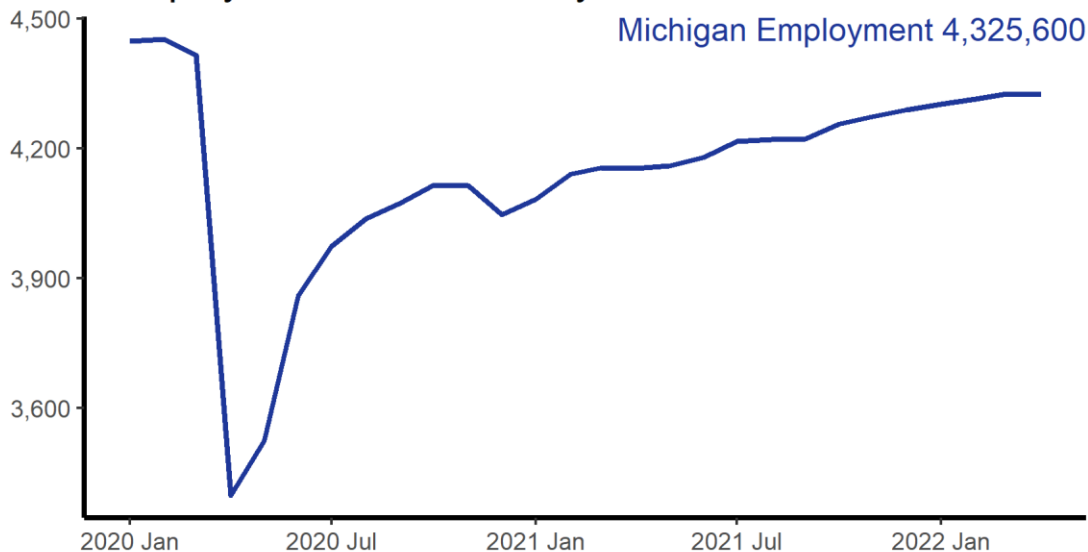


Seasonally Adjusted  
Source: Bureau of Labor Statistics



# Michigan Jobs Recovery

Total employment since January 2020, in thousands



Nonfarm Payroll Employment, Seasonally Adjusted  
Source: Bureau of Labor Statistics

