

Arizona Employment Situation Summary

National Employment Data

- Since President Biden took office, 8.3 million jobs have been created nationwide, an average of 553,000 created each month.
- In the month of April, the latest for which national data are available, 428,000 jobs were created, and the unemployment rate remained at 3.6%—a pandemic-era low and now just 0.1 percentage points above the pre-pandemic rate.
- The unemployment rate declined for adult women (3.2%), Black workers (5.9%) and Hispanic workers (4.1%) and remained steady for white workers (3.2%). The unemployment rate rose slightly for adult men (3.5%) and Asian workers (3.1%).

State Employment Data

- Since President Biden took office, 152,500 jobs have been created in Arizona.
- In the month of April, the latest for which state-level data are available, 16,100 jobs were created in Arizona.

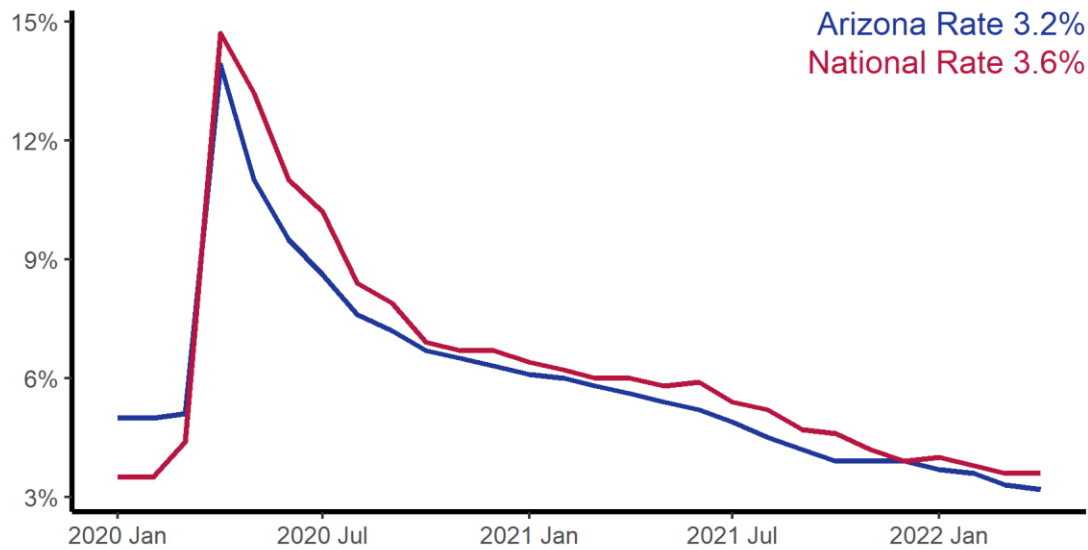
Sector	Change in Total Jobs in April	Jobs Recovered	Change in Total Jobs Since January 2021
Total Nonfarm, Arizona	16,100	114%	152,500
Manufacturing, Arizona	4,900	251%	12,500
Leisure and Hospitality, Arizona	4,600	91%	46,100
Education and Health Services, Arizona	2,300	96%	16,100
Professional and Business Services, Arizona	1,500	108%	16,400
Government, Arizona	500	23%	4,400
Retail Trade, Arizona	-200	165%	20,100
Construction, Arizona	-600	225%	6,200

Source: Bureau of Labor Statistics

Note: Positive change reflects net job creation. "Recovered" refers to the share of jobs recovered since the pandemic low point as a share of jobs lost during the pandemic. Jobs lost during the pandemic are measured as the difference between the number of jobs in the industry in February 2020 and the number at the "low point" of the pandemic--the month with the fewest people employed in a given industry. The month of the low point varies by industry.

Arizona Unemployment Rate

State and national unemployment rates, since January 2020

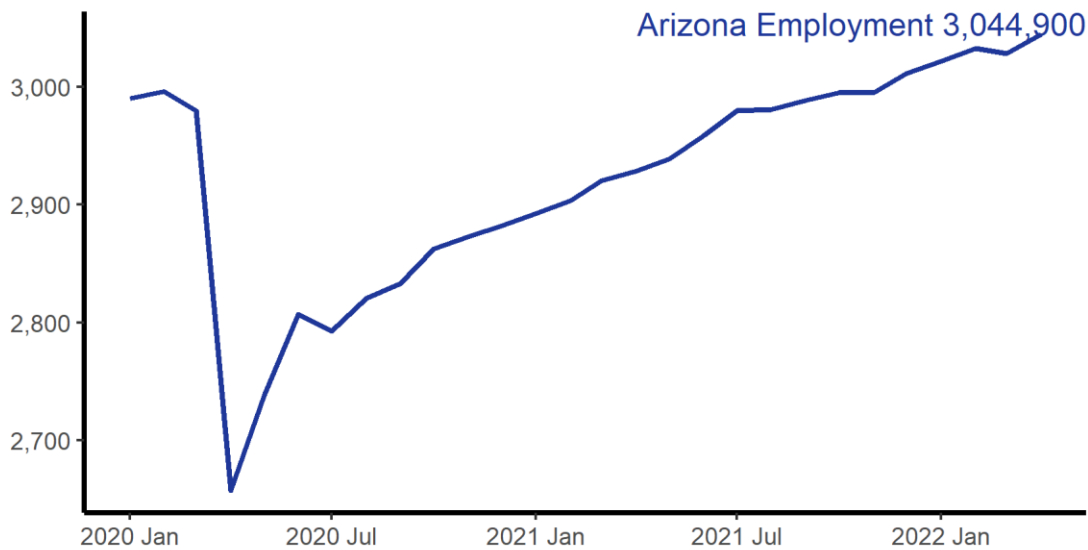


Seasonally Adjusted
Source: Bureau of Labor Statistics



Arizona Jobs Recovery

Total employment since January 2020, in thousands



Nonfarm Payroll Employment, Seasonally Adjusted
Source: Bureau of Labor Statistics

