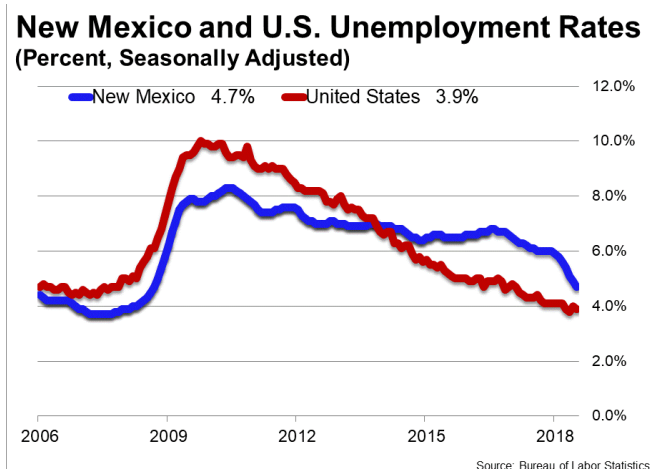




August 17, 2018

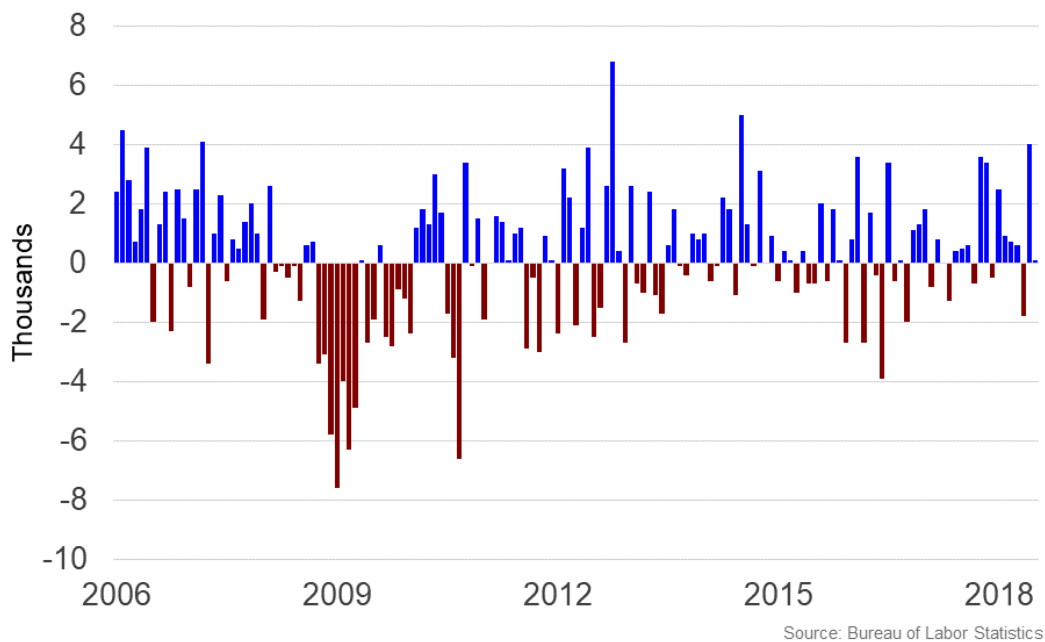
Summary

- **New Mexico added 100 jobs and the unemployment rate declined by 0.2 percentage point to 4.7 percent in July** according to Bureau of Labor Statistics (BLS) data.
- **Over the past twelve months, New Mexico added 13,400 jobs** and the unemployment rate fell by 1.4 percentage points from 6.1 percent.
- **In July, New Mexico's private sector added 1,200 jobs** and over the past twelve months it created 14,100 jobs.
- The number of **unemployed New Mexicans fell by 1,756 in July**, and over the past year 22,801 New Mexicans found jobs.
- New Mexico's **labor force participation rate remains unchanged** from 57.8 percent in July. Since last year, the labor force participation rate rose 0.5 percentage point.
- The national unemployment rate **declined by 0.1 percentage point to 3.9 percent in July**. State employment and unemployment data for August is scheduled for release on September 21, 2018. The national employment situation report for August will be released on Friday, September 7, 2018.



New Mexico Nonfarm Payroll Jobs

Monthly Change (Thousands, Seasonally Adjusted)



New Mexico Payroll Employment

New Mexico added 100 jobs, or 0.01 percent, on a seasonally adjusted basis during July. In the prior month, New Mexico added 4,000 jobs. Over the past twelve months, nonfarm payrolls in New Mexico increased by 13,400, or 1.62 percent. New Mexico nonfarm payroll employment has increased in 9 of the past 12 months.

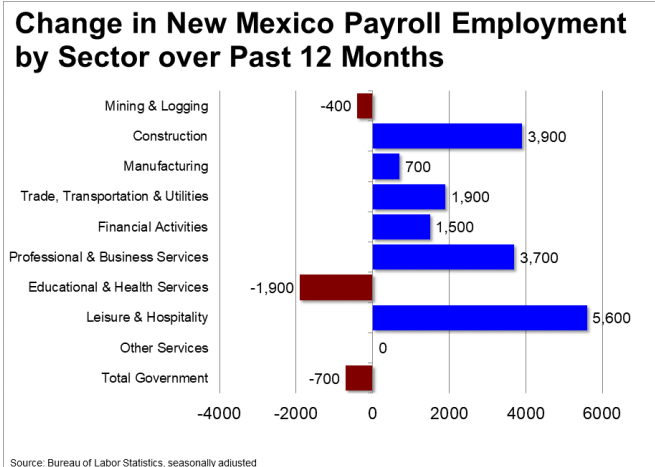
Nationally, nonfarm payrolls increased by 157,000 jobs in July, or 0.11 percent. Over the 12-month period ending July 2018, nonfarm payrolls grew by 2,400,000 jobs, or 1.64 percent. New Mexico ranks 27th among the 50 states and the District of Columbia for percentage gain in nonfarm payroll employment over the past 12 months.

During July, New Mexico's private-sector added 1,200 jobs, or 0.18 percent. The private-sector in New Mexico added 3,100 jobs in the prior month. Over the past twelve months, private-sector payrolls in New Mexico increased by 14,100, or 2.19 percent. New Mexico private-sector payroll employment has increased in 9 of the past 12 months.

Nationally, private-sector payroll jobs increased by 170,000 jobs in July, or 0.13 percent. Over the past 12 months, the nation's economy has added 2,392,000 jobs in the private-sector, an increase of 1.92 percent. New Mexico ranks 27th among the 50 states and the District of Columbia for percentage gain in private-sector payroll employment over the past 12 months.

The best performing sectors on a seasonally adjusted basis during July were Construction (+1,000) and Leisure & Hospitality (+700). The poorest performing sectors during the month were Total Government (-1,100) and Trade, Transportation & Utilities (-500).

The best performing sectors during the last twelve months were Leisure & Hospitality (+5,600) and Construction (+3,900). The poorest performing sectors during the last twelve months were Educational & Health Services (-1,900) and Total Government (-700).



New Mexico Labor Force Statistics

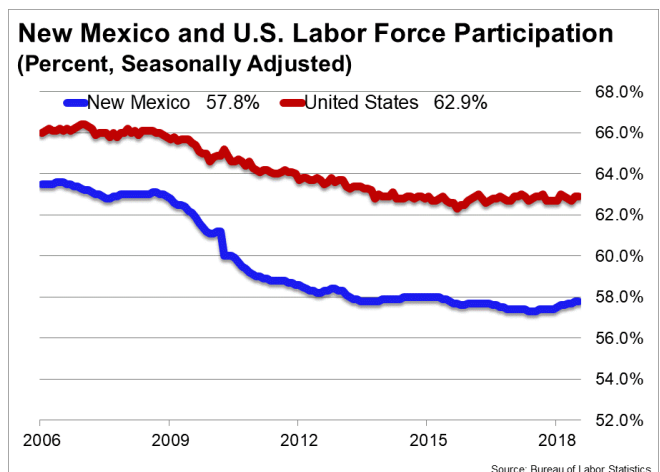
Labor Force Participation

The labor force participation rate in New Mexico was unchanged at 57.8 percent in July. Among the 50 states and the District of Columbia, 45 have a higher labor force participation rate than New Mexico. The labor force participation rate in New Mexico is unchanged from a year earlier. The labor force participation rate is the percentage of the civilian noninstitutionalized population age 16 and older who are employed or actively looking for work.

The 10-year high for the labor force participation rate in New Mexico was 63.1 percent in September 2008. The series high for the labor force participation rate in New Mexico occurred in July 1990 when the labor force participation rate hit 64.1 percent. The 10-year low for the labor force participation rate was 57.3 percent in July 2017. This also represents the series low for the labor force participation rate in New Mexico. The national labor force participation rate was unchanged at 62.9 percent, but remains near its 38-year low of 62.4 percent.

Employment-to-Population Ratio

The employment-to-population ratio, or the percentage of the New Mexico civilian noninstitutionalized population 16 years and older counted as employed, rose to 55.0 percent in July from 54.9 percent the prior month. At 55.0 percent, New Mexico has one of the five lowest employment-to-population ratios in the nation. The employment-to-



population ratio in New Mexico is 1.1 percentage points higher than a year earlier.

The 10-year high for the employment-to-population ratio in New Mexico was 60.2 percent in August 2008. The series high for the employment-to-population ratio in New Mexico occurred in August 2006 when the employment-to-population ratio hit 60.9 percent. The 10-year low for the employment-to-population ratio was 53.6 percent in January 2017. The series low for the employment-to-population ratio occurred in March 2017 when the employment-to-population ratio was 53.6 percent.

The national employment-to-population ratio rose by 0.1 percentage point to 60.5 percent in July. That rate was 0.3 percentage point higher than a year earlier. The all-time high for the employment-to-population ratio was 64.7 in April 2000. The 10-year high for the employment-to-population ratio was 63.4 percent in December 2006. The recent low occurred in October 2013 when the employment-to-population ratio dipped to 58.2 percent. The last time the employment-to-population ratio posted a reading lower than 58.2 percent was July 1983.

