

Kansas Employment Situation Summary

National Employment Data

- Since President Biden took office, 8.3 million jobs have been created nationwide, an average of 553,000 created each month.
- In the month of April, the latest for which national data are available, 428,000 jobs were created, and the unemployment rate remained at 3.6%—a pandemic-era low and now just 0.1 percentage points above the pre-pandemic rate.
- The unemployment rate declined for adult women (3.2%), Black workers (5.9%) and Hispanic workers (4.1%) and remained steady for white workers (3.2%). The unemployment rate rose slightly for adult men (3.5%) and Asian workers (3.1%).

State Employment Data

- Since President Biden took office, 26,900 jobs have been created in Kansas.
- In the month of April, the latest for which state-level data are available, 500 jobs were created in Kansas.

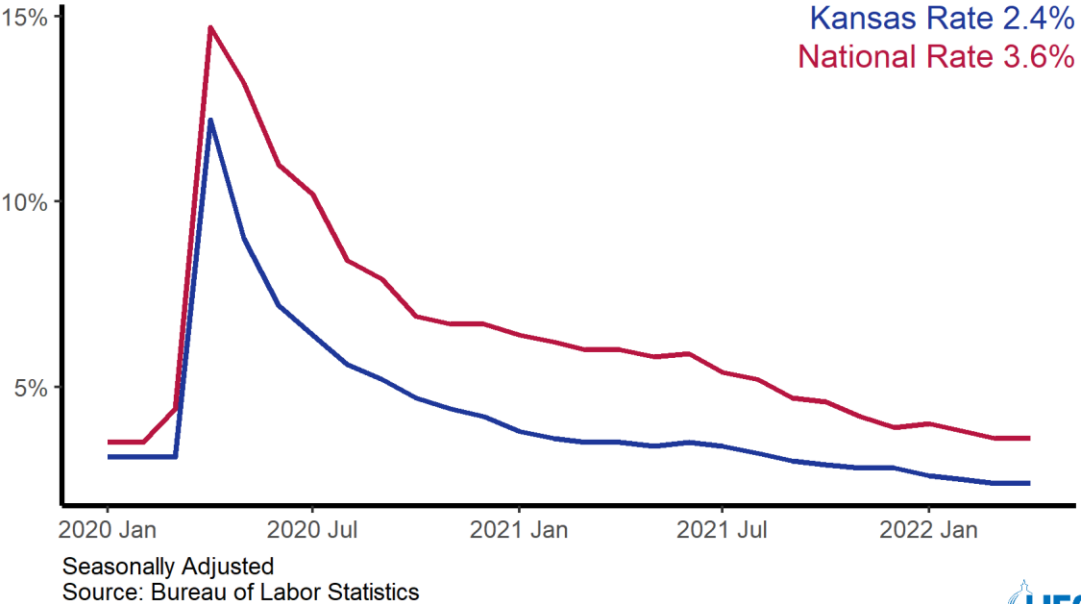
Sector	Change in Total Jobs in April	Jobs Recovered	Change in Total Jobs Since January 2021
Total Nonfarm, Kansas	500	77%	26,900
Leisure and Hospitality, Kansas	1,300	90%	10,400
Manufacturing, Kansas	800	77%	7,600
Government, Kansas	600	40%	-300
Education and Health Services, Kansas	500	49%	-2,600
Construction, Kansas	400	174%	3,900
Retail Trade, Kansas	-500	102%	2,300
Professional and Business Services, Kansas	-3,100	64%	900

Source: Bureau of Labor Statistics

Note: Positive change reflects net job creation. "Recovered" refers to the share of jobs recovered since the pandemic low point as a share of jobs lost during the pandemic. Jobs lost during the pandemic are measured as the difference between the number of jobs in the industry in February 2020 and the number at the "low point" of the pandemic--the month with the fewest people employed in a given industry. The month of the low point varies by industry.

Kansas Unemployment Rate

State and national unemployment rates, since January 2020



Kansas Jobs Recovery

Total employment since January 2020, in thousands

