

## Puerto Rico Employment Situation Summary

### National Employment Data

- The U.S. economy added 150,000 jobs in October, and the United States has seen 33 consecutive months of job growth under President Biden.
- Since President Biden came into office, the United States has added nearly 14 million jobs, and at 3.9%, the unemployment rate remains near historic lows.
- In October, the unemployment rate was 5.8% for Black workers, 4.8% for Hispanic workers, 3.1% for Asian workers, 3.5% for white workers, and 6.7% (not seasonally adjusted) for American Indian and Alaska Native workers.

### State Employment Data

- Since President Biden took office, 105,000 jobs have been created in Puerto Rico.
- In the month of October, 2,800 jobs were created in Puerto Rico.

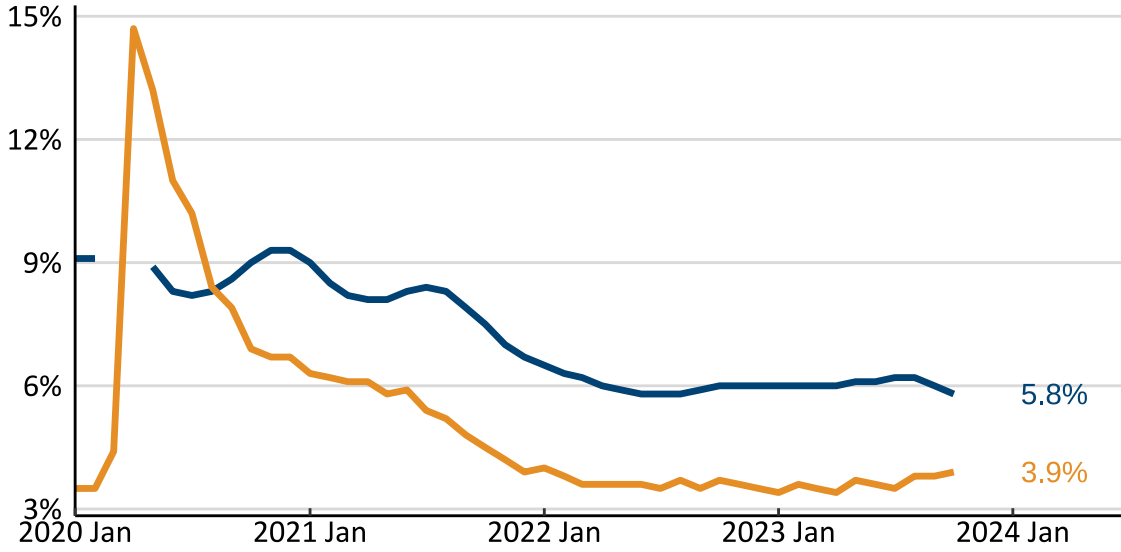
Sector	Change in Total Jobs in October	Jobs Recovered	Change in Total Jobs Since January 2021
<b>Total Nonfarm</b>	<b>2,800</b>	<b>165%</b>	<b>105,000</b>
Total Private	2,500	161%	100,200
Professional and Business Services	1,200	207%	18,300
Trade, Transportation, and Utilities	600	144%	18,000
Government	300	143%	4,800
Leisure and Hospitality	200	147%	25,100
Information	100	59%	2,200
Mining and Logging	0	150%	100
Manufacturing	0	202%	8,100
Other Services	0	129%	2,400
Construction	-200	225%	8,700

Source: Bureau of Labor Statistics

Note: Positive change reflects net job creation. "Recovered" refers to the share of jobs recovered since the pandemic low point as a share of jobs lost during the pandemic. Jobs lost during the pandemic are measured as the difference between the number of jobs in the industry in February 2020 and the number at the "low point" of the pandemic—the month with the fewest people employed in a given industry. The month of the low point varies by industry.

# Puerto Rico Unemployment Rate

State and national unemployment rates, since January 2020

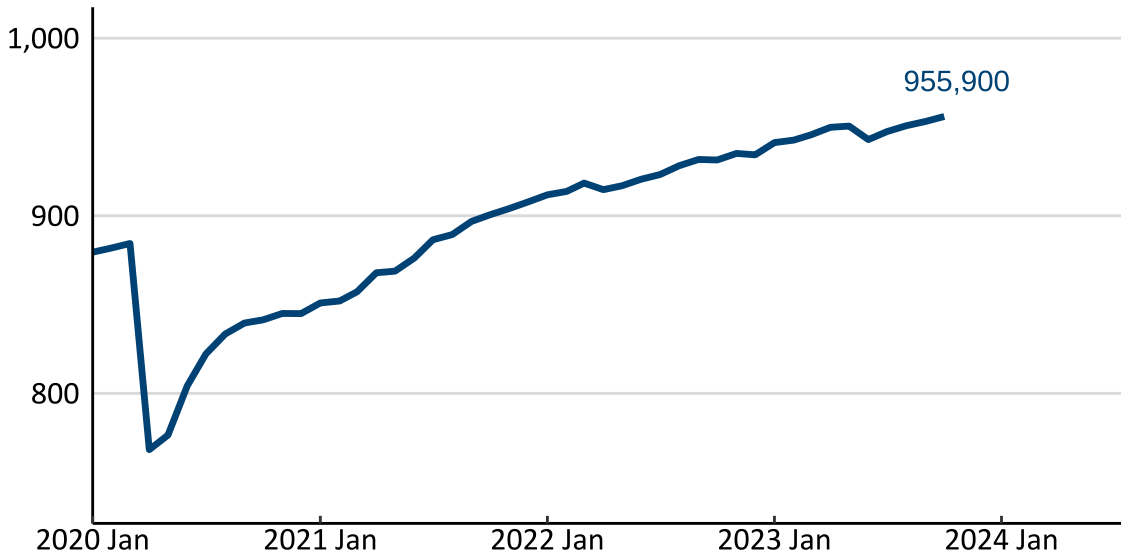


Seasonally Adjusted, Spring 2020 Data Unavailable  
Source: Bureau of Labor Statistics



# Puerto Rico Jobs Recovery

Total employment since January 2020, in thousands



Nonfarm Payroll Employment, Seasonally Adjusted  
Source: Bureau of Labor Statistics

