

## Alabama Employment Situation Summary

### National Employment Data

- Since President Biden took office, 4,817,000 jobs have been created nationwide, an average of 602,000 created each month.
- In the month of September, the latest for which national data are available, 194,000 jobs were created, and the unemployment rate dropped to 4.8%, outperforming expectations and reaching a new pandemic-era low.
- The unemployment rate went down for adult men (4.7%), adult women (4.2%), white workers (4.2%) and Black workers (7.9%). The unemployment rate among Asian workers (4.2%) and Hispanic workers (6.3%) remained stable.

### State Employment Data

- Since President Biden took office, 29,900 jobs have been created in Alabama.
- In the month of September, the latest for which state-level data are available, 11,400 jobs were created in Alabama.

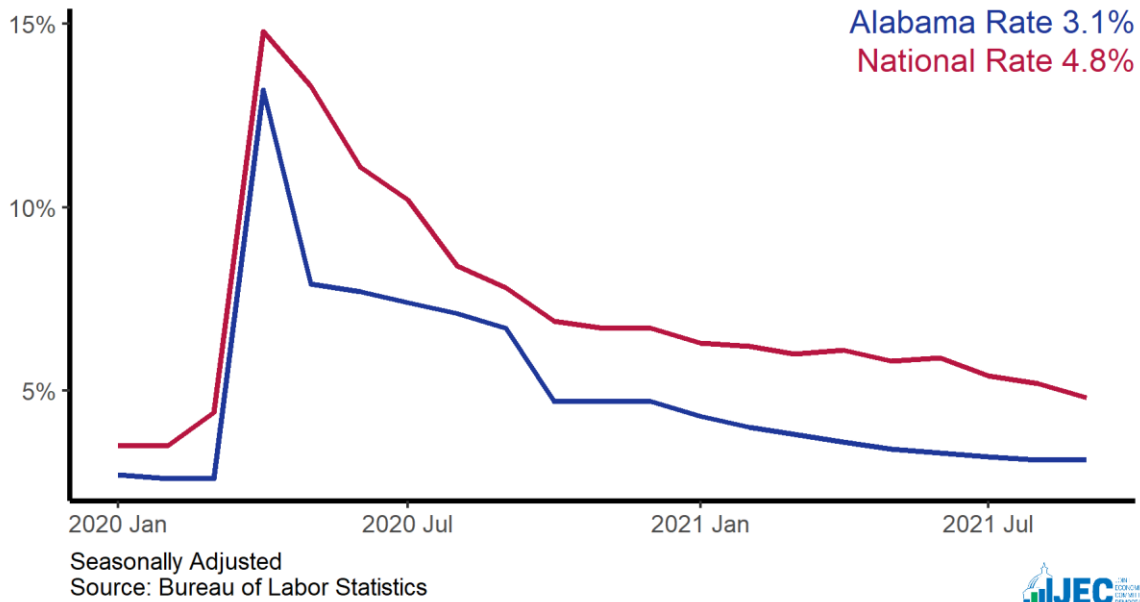
Sector	Change in Total Jobs in September	Jobs Recovered	Change in Total Jobs Since January
<b>Total Nonfarm, Alabama</b>	<b>11,400</b>	<b>83%</b>	<b>29,900</b>
Professional and Business Services, Alabama	4,000	97%	800
Retail Trade, Alabama	3,400	111%	6,600
Construction, Alabama	1,500	37%	-4,400
Leisure and Hospitality, Alabama	1,300	85%	7,100
Government, Alabama	500	76%	5,200
Education and Health Services, Alabama	300	64%	4,700
Manufacturing, Alabama	-1,100	89%	2,400

Source: Bureau of Labor Statistics

Note: Positive change reflects net job creation. "Recovered" refers to the share of jobs recovered since the pandemic low point as a share of jobs lost during the pandemic. Jobs lost during the pandemic are measured as the difference between the number of jobs in the industry in February 2020 and the number at the "low point" of the pandemic--the month with the fewest people employed in a given industry. The month of the low point varies by industry.

# Alabama Unemployment Rate

State and national unemployment rates, since January 2020



# Alabama Jobs Recovery

Total employment since January 2020, in thousands

