

## Puerto Rico Employment Situation Summary

### National Employment Data

- Job growth continued in October with 261,000 jobs added, as the U.S. experienced the 21st consecutive month of job growth under President Biden. The United States has recovered more jobs than were lost during the pandemic recession.
- At 3.7%, the unemployment rate nearly matches a 50-year low.
- Since President Biden came into office, the United States has added almost 10.3 million jobs.
- Under President Biden, the unemployment rate has fallen for Black workers (5.9%), Hispanic workers (4.2%), white workers (3.2%), Black workers (5.9%), Asian workers (2.9%), men (3.7%) and women (3.7%).

### State Employment Data

- Since President Biden took office, 72,500 jobs have been created in Puerto Rico.
- In the month of October, 1,100 jobs were created in Puerto Rico.

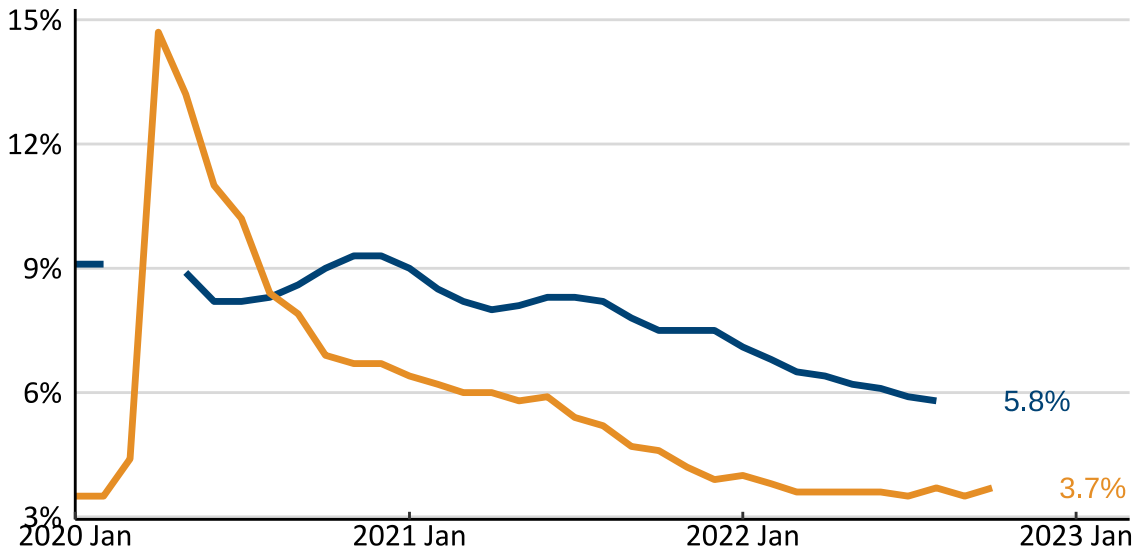
Sector	Change in Total Jobs in October	Jobs Recovered	Change in Total Jobs Since January 2021
<b>Total Nonfarm</b>	<b>1,100</b>	<b>136%</b>	<b>72,500</b>
Government	700	55%	-2,600
Leisure and Hospitality	500	130%	20,400
Construction	400	159%	4,300
Education and Health Services	300	98%	5,900
Manufacturing	200	204%	8,600
Retail Trade	100	128%	10,300
Professional and Business Services	-1,300	180%	13,900

Source: Bureau of Labor Statistics

Note: Positive change reflects net job creation. "Recovered" refers to the share of jobs recovered since the pandemic low point as a share of jobs lost during the pandemic. Jobs lost during the pandemic are measured as the difference between the number of jobs in the industry in February 2020 and the number at the "low point" of the pandemic—the month with the fewest people employed in a given industry. The month of the low point varies by industry.

## Puerto Rico Unemployment Rate

State and national unemployment rates, since January 2020

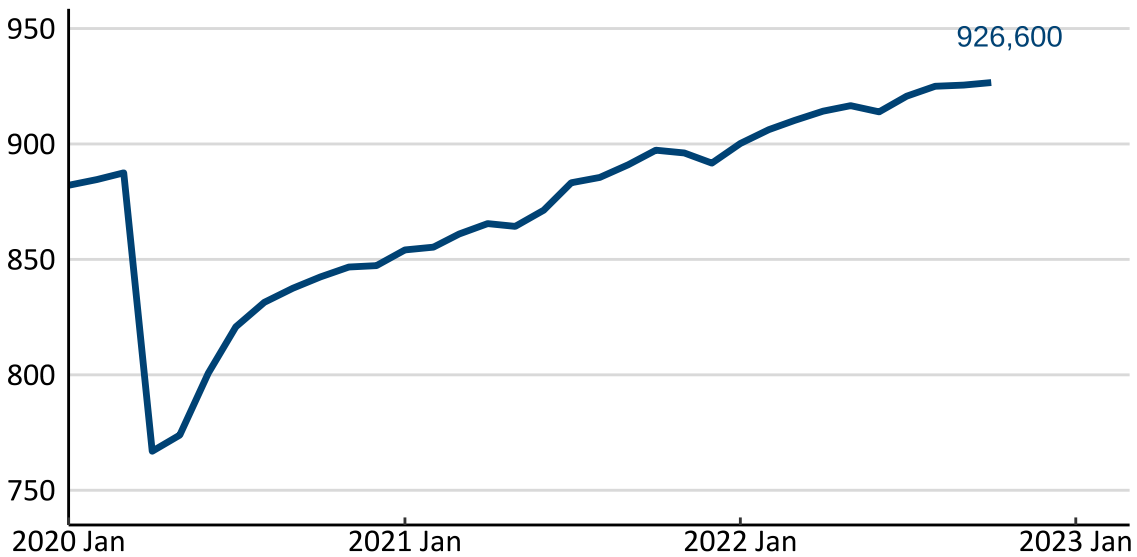


Seasonally Adjusted, Spring 2020 Data Unavailable  
Source: Bureau of Labor Statistics



## Puerto Rico Jobs Recovery

Total employment since January 2020, in thousands



Nonfarm Payroll Employment, Seasonally Adjusted  
Source: Bureau of Labor Statistics

