

Delaware Employment Situation Summary

National Employment Data

- Since President Biden took office, we have created 4,454,000 jobs nationwide, an average of 636,000 each month.
- In the month of August, the latest for which national data are available, nonfarm payroll employment increased by 235,000 and the unemployment rate dropped to 5.2%, a new pandemic-era low.
- The national unemployment rate was 8.8% for Black workers, 6.4% for Hispanic workers, and 4.6% for Asian workers, relative to the white unemployment rate of 4.5%.

State Employment Data

- Since President Biden took office, we have created 9,200 jobs in Delaware.
- In the month of August, the latest for which state-level data are available, we created 800 jobs in Delaware.

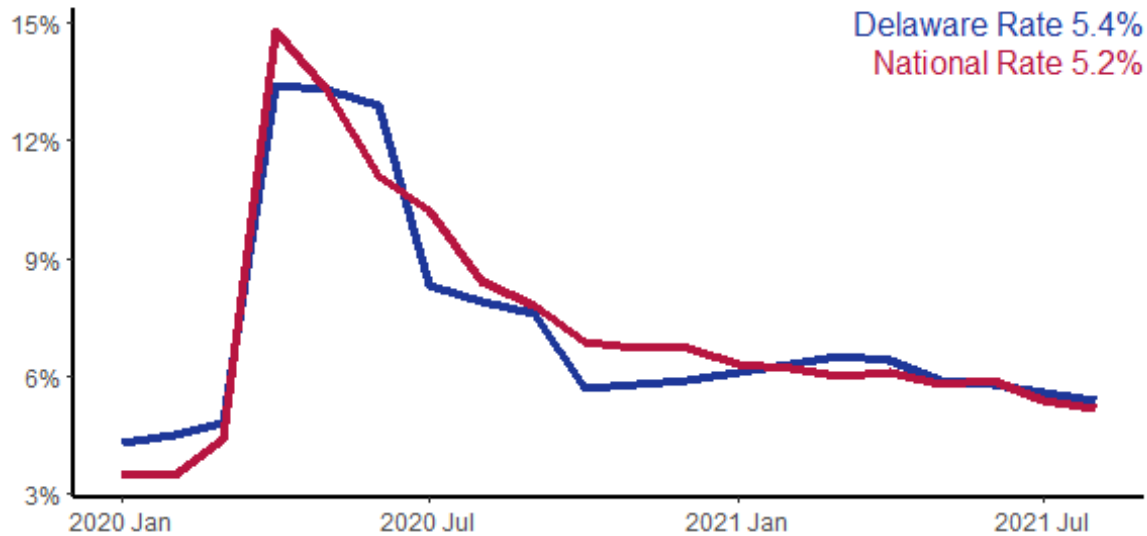
Sector	Change in Total Jobs in August	Jobs Recovered	Change in Total Jobs Since January
Total Nonfarm, Delaware	800	77%	9,200
Retail Trade, Delaware	-100	94%	1,600
Professional and Business Services, Delaware	400	35%	-100
Education and Health Services, Delaware	300	63%	1,300
Leisure and Hospitality, Delaware	800	84%	4,300
Manufacturing, Delaware	0	17%	-500
Construction, Delaware	300	112%	1,100
Government, Delaware	0	84%	1,400

Source: Bureau of Labor Statistics

Note: Positive change reflects net job creation. "Recovered" refers to the share of jobs recovered since the pandemic low point as a share of jobs lost during the pandemic. Jobs lost during the pandemic are measured as the difference between the number of jobs in the industry in February 2020 and the number at the "low point" of the pandemic--the month with the fewest people employed in a given industry. The month of the low point varies by industry.

Delaware Unemployment Rate

State and national unemployment rates, since January 2020

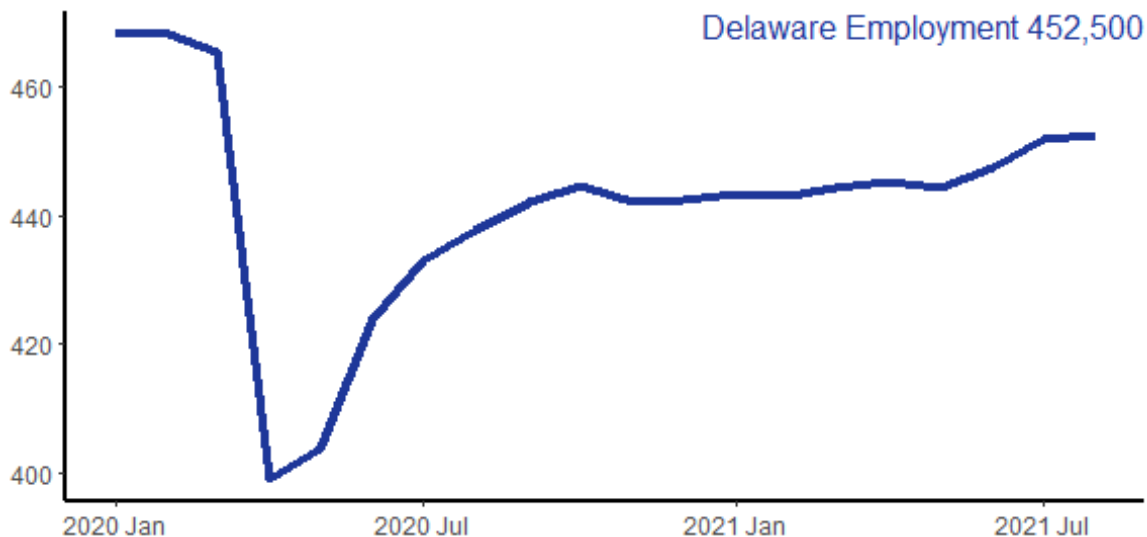


Seasonally Adjusted
Source: Bureau of Labor Statistics



Delaware Jobs Recovery

Total employment since January 2020, in thousands



Nonfarm Payroll Employment, Seasonally Adjusted
Source: Bureau of Labor Statistics

