

Kansas Employment Situation Summary

National Employment Data

- Since President Biden took office, we have created 4,454,000 jobs nationwide, an average of 636,000 each month.
- In the month of August, the latest for which national data are available, nonfarm payroll employment increased by 235,000 and the unemployment rate dropped to 5.2%, a new pandemic-era low.
- The national unemployment rate was 8.8% for Black workers, 6.4% for Hispanic workers, and 4.6% for Asian workers, relative to the white unemployment rate of 4.5%.

State Employment Data

- Since President Biden took office, we have created 17,600 jobs in Kansas.
- In the month of August, the latest for which state-level data are available, we lost 1,300 jobs in Kansas.

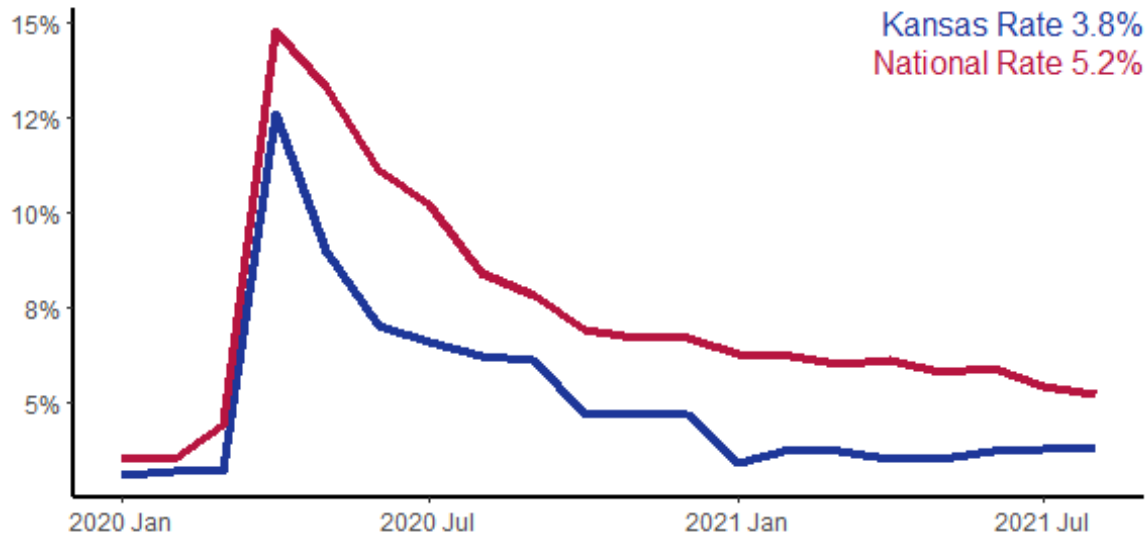
Sector	Change in Total Jobs in August	Jobs Recovered	Change in Total Jobs Since January
Total Nonfarm, Kansas	-1,300	70%	17,600
Retail Trade, Kansas	-1,400	99%	-700
Professional and Business Services, Kansas	600	81%	2,300
Education and Health Services, Kansas	-600	54%	-800
Leisure and Hospitality, Kansas	1,500	79%	7,900
Manufacturing, Kansas	3,300	67%	6,200
Construction, Kansas	-2,400	47%	-1,000
Government, Kansas	-4,200	27%	1,300

Source: Bureau of Labor Statistics

Note: Positive change reflects net job creation. "Recovered" refers to the share of jobs recovered since the pandemic low point as a share of jobs lost during the pandemic. Jobs lost during the pandemic are measured as the difference between the number of jobs in the industry in February 2020 and the number at the "low point" of the pandemic--the month with the fewest people employed in a given industry. The month of the low point varies by industry.

Kansas Unemployment Rate

State and national unemployment rates, since January 2020

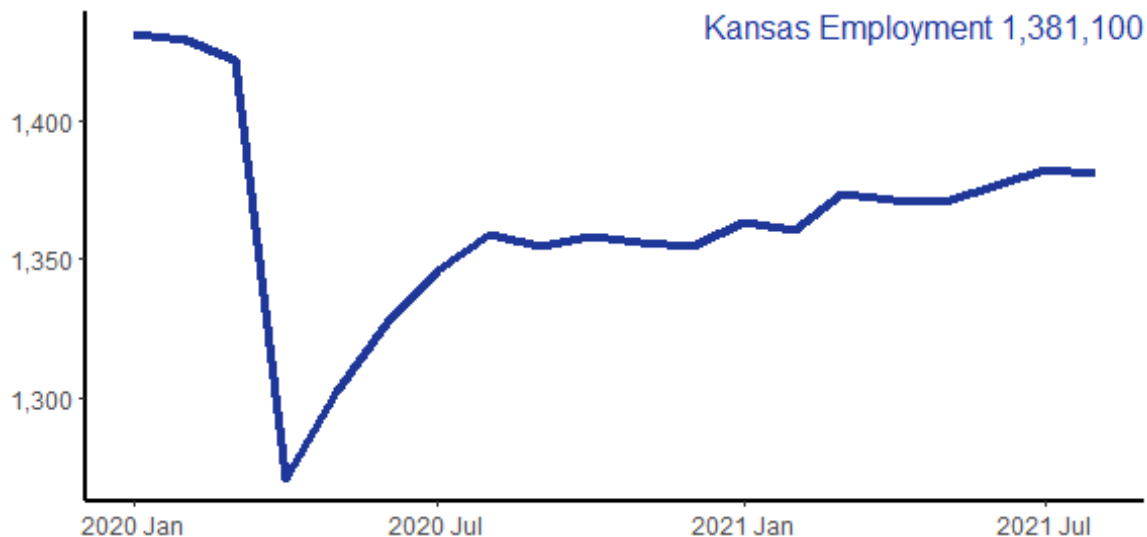


Seasonally Adjusted
Source: Bureau of Labor Statistics



Kansas Jobs Recovery

Total employment since January 2020, in thousands



Nonfarm Payroll Employment, Seasonally Adjusted
Source: Bureau of Labor Statistics

