

Wisconsin Employment Situation Summary

National Employment Data

- Since President Biden took office, we have created 4,454,000 jobs nationwide, an average of 636,000 each month.
- In the month of August, the latest for which national data are available, nonfarm payroll employment increased by 235,000 and the unemployment rate dropped to 5.2%, a new pandemic-era low.
- The national unemployment rate was 8.8% for Black workers, 6.4% for Hispanic workers, and 4.6% for Asian workers, relative to the white unemployment rate of 4.5%.

State Employment Data

- Since President Biden took office, we have created 39,100 jobs in Wisconsin.
- In the month of August, the latest for which state-level data are available, we lost 10,400 jobs in Wisconsin.

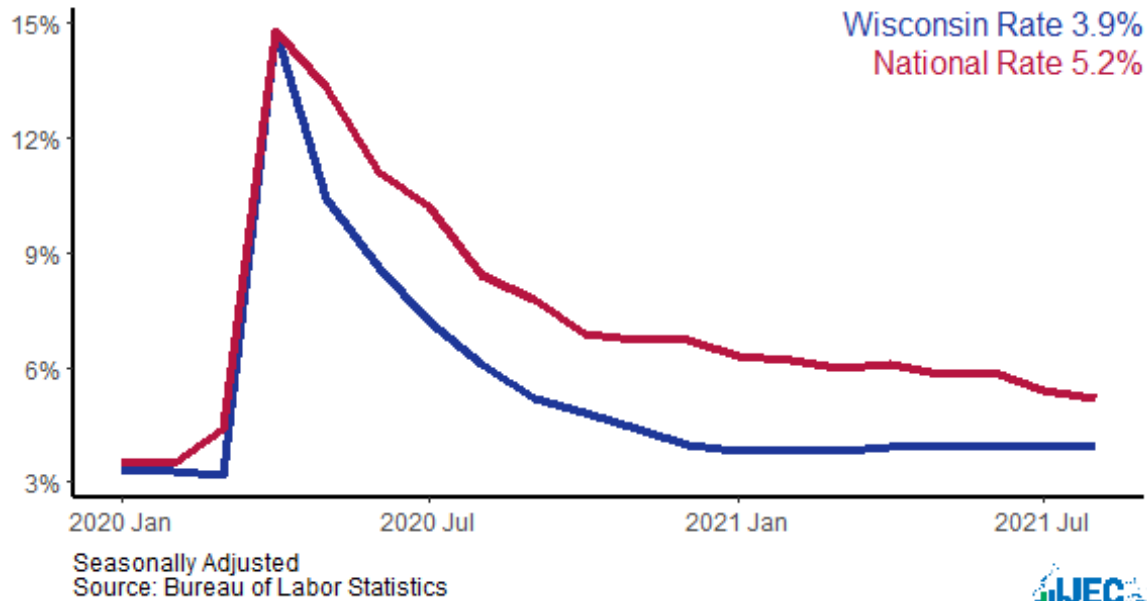
Sector	Change in Total Jobs in August	Jobs Recovered	Change in Total Jobs Since January
Total Nonfarm, Wisconsin	-10,400	70%	39,100
Retail Trade, Wisconsin	-700	87%	-1,900
Professional and Business Services, Wisconsin	-1,500	89%	2,300
Education and Health Services, Wisconsin	-7,100	54%	1,800
Leisure and Hospitality, Wisconsin	2,900	69%	16,900
Manufacturing, Wisconsin	-2,700	86%	6,100
Construction, Wisconsin	100	48%	-1,100
Government, Wisconsin	-2,200	48%	5,000

Source: Bureau of Labor Statistics

Note: Positive change reflects net job creation. "Recovered" refers to the share of jobs recovered since the pandemic low point as a share of jobs lost during the pandemic. Jobs lost during the pandemic are measured as the difference between the number of jobs in the industry in February 2020 and the number at the "low point" of the pandemic--the month with the fewest people employed in a given industry. The month of the low point varies by industry.

Wisconsin Unemployment Rate

State and national unemployment rates, since January 2020



Wisconsin Jobs Recovery

Total employment since January 2020, in thousands

