



United States Congress

Joint Economic Committee

Est. 1946

Republicans

Representative David Schweikert, *Chairman*



Alabama Employment Update



March 2025 | Released April 18, 2025

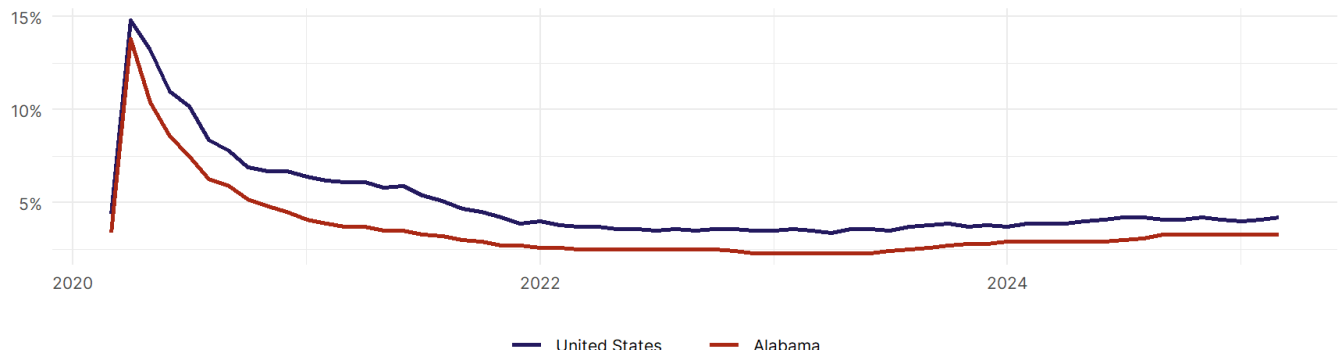
United States Employment Snapshot

- In March, among the 50 states and the District of Columbia **unemployment fell in 15, rose in 17, and remained unchanged in 19.**
- The highest unemployment rate was 5.7 percent in **Nevada**, and the lowest was 1.8 percent in **South Dakota**. Nationally, the unemployment rate rose by 0.1 percentage point to 4.2 percent.
- In March, **payroll jobs rose in 38 states and fell in 12.** The largest payroll job percent increase was 0.5 percent in **Missouri**. The largest payroll job percent decline was 0.3 percent in **Connecticut**.

Alabama Employment Snapshot

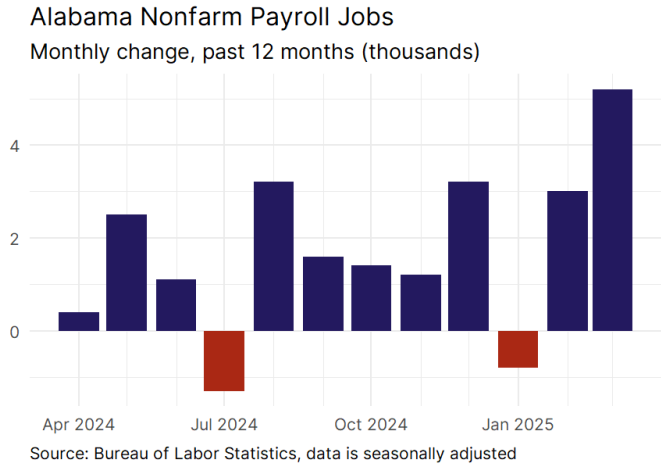
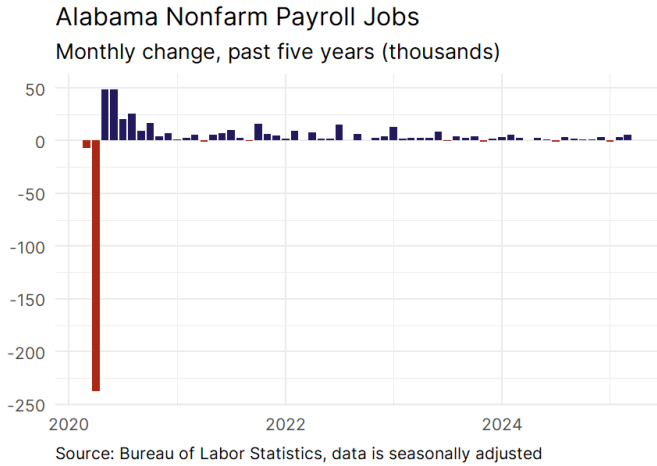
- In March, **Alabama added 5,200 net payroll jobs** and the **unemployment rate remained unchanged at 3.3 percent.** In the prior month, Alabama added 3,000 net payroll jobs.
- Over the past 12 months, **Alabama added 20,700 net payroll jobs** and the **unemployment rate rose by 0.4 percentage points from 2.9 percent.**
- Nationally, nonfarm payrolls **rose by 228,000 in March, or 0.1 percent.** Alabama is **tied for 21st** in the nation for percentage gain in nonfarm payroll employment over the past 12 months.
- In March, **Alabama's private sector added 4,800 net private payroll jobs**, and over the past 12 months it added 15,000 private payroll jobs. In the prior month, Alabama added 2,800 net private payroll jobs.
- In March, employment in Alabama **rose by 3,345**, and over the past 12 months it rose by 27,680.
- **Alabama's labor force participation rate rose to 57.8 percent** in March from 57.7 percent and is **tied for 47th** in the nation. In the past 12 months, the labor force participation rate has risen by 0.4 percentage points.

Alabama
Unemployment Rate

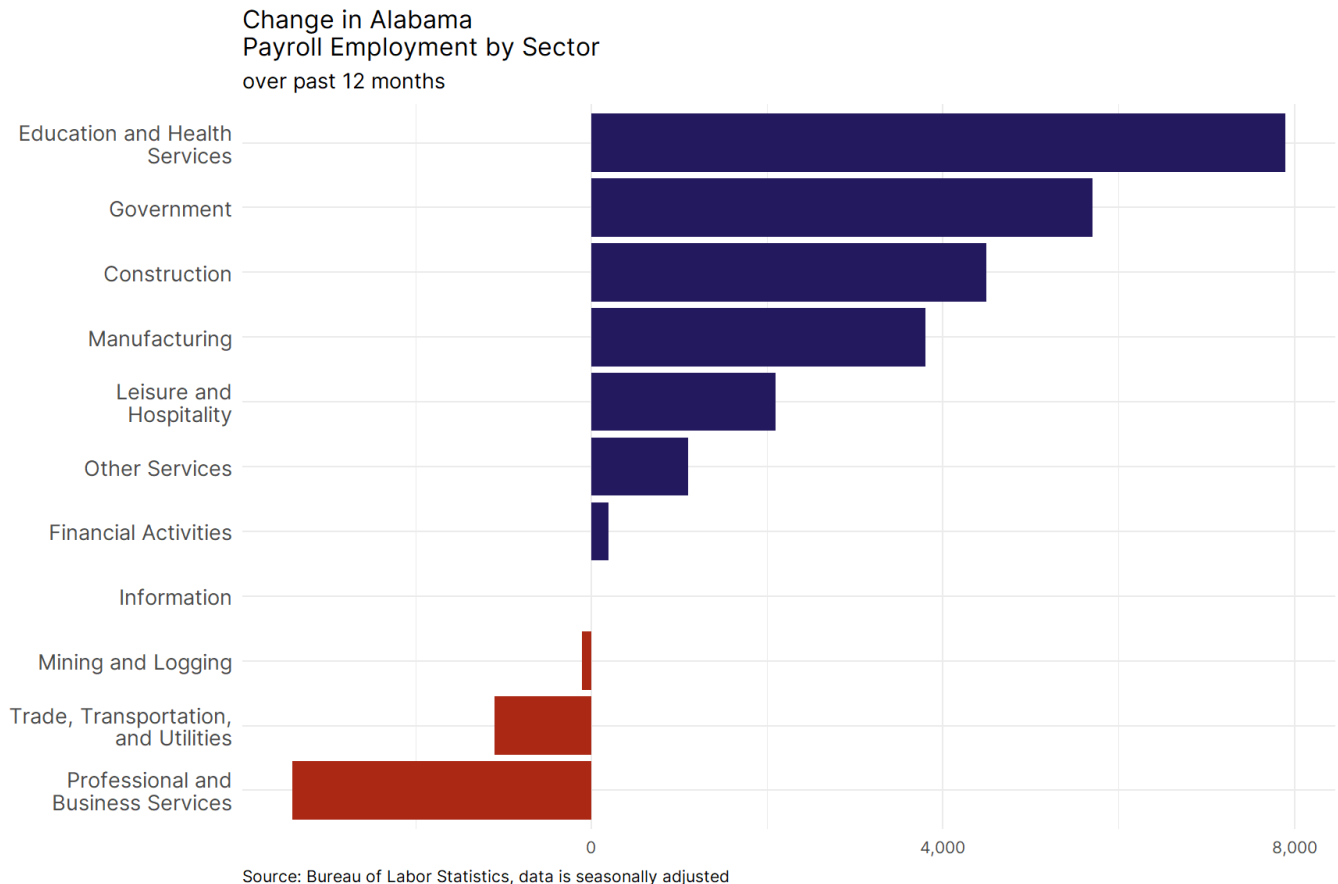


Source: Bureau of Labor Statistics, data is seasonally adjusted

Alabama Payroll Employment



- **Alabama added 5,200 net payroll jobs, or 0.2 percent,** on a seasonally adjusted basis during March. In the prior month, Alabama added 3,000 jobs. Alabama nonfarm payroll employment has increased in **10 of the past 12 months**.
- Nationally, nonfarm payrolls **rose by 228,000 in March, or 0.1 percent**. Alabama is tied for 21st in the nation for percentage gain in nonfarm payroll employment over the past 12 months.
- **Alabama added 4,800 private sector jobs, or 0.3 percent,** on a seasonally adjusted basis during March. In the prior month, Alabama added 2,800 jobs. Alabama private sector payroll employment has increased in **9 of the past 12 months**.
- Nationally, private sector payroll jobs **rose by 209,000 jobs in March, or 0.2 percent**. Alabama is tied for 23rd in the nation for percentage gain in private sector payroll employment over the past 12 months.

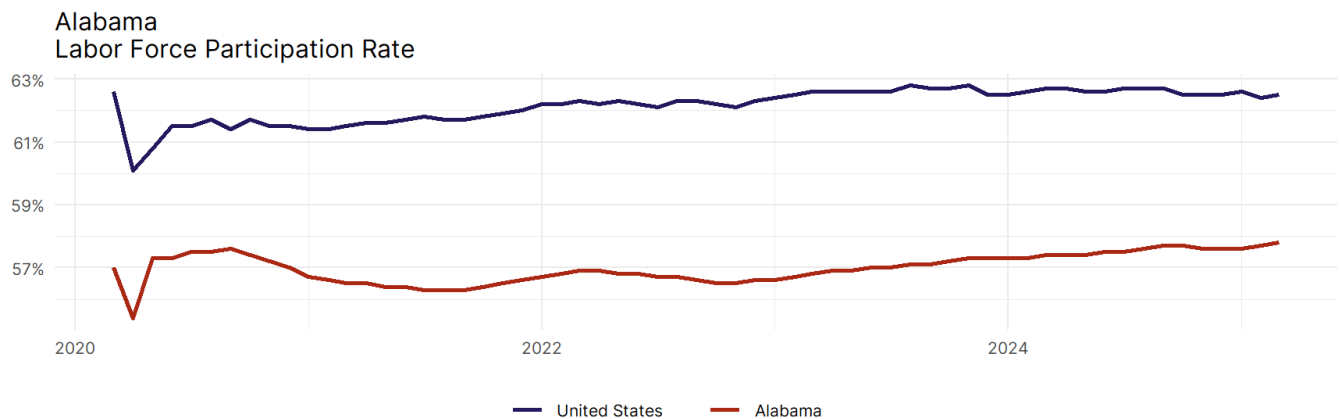


- The best performing sectors on a seasonally adjusted basis during March were **Construction (2,100)** and **Education and Health Services (800)**.
- The poorest performing sectors during the month were **Other Services (400)** and **Mining and Logging tied with Information; and Financial Activities; and Professional and Business Services (0)**.
- The best performing sectors during the last 12 months were **Education and Health Services (7,900)** and **Government (5,700)**.
- The poorest performing sectors during the last 12 months were **Trade, Transportation, and Utilities (-1,100)** and **Professional and Business Services (-3,400)**.

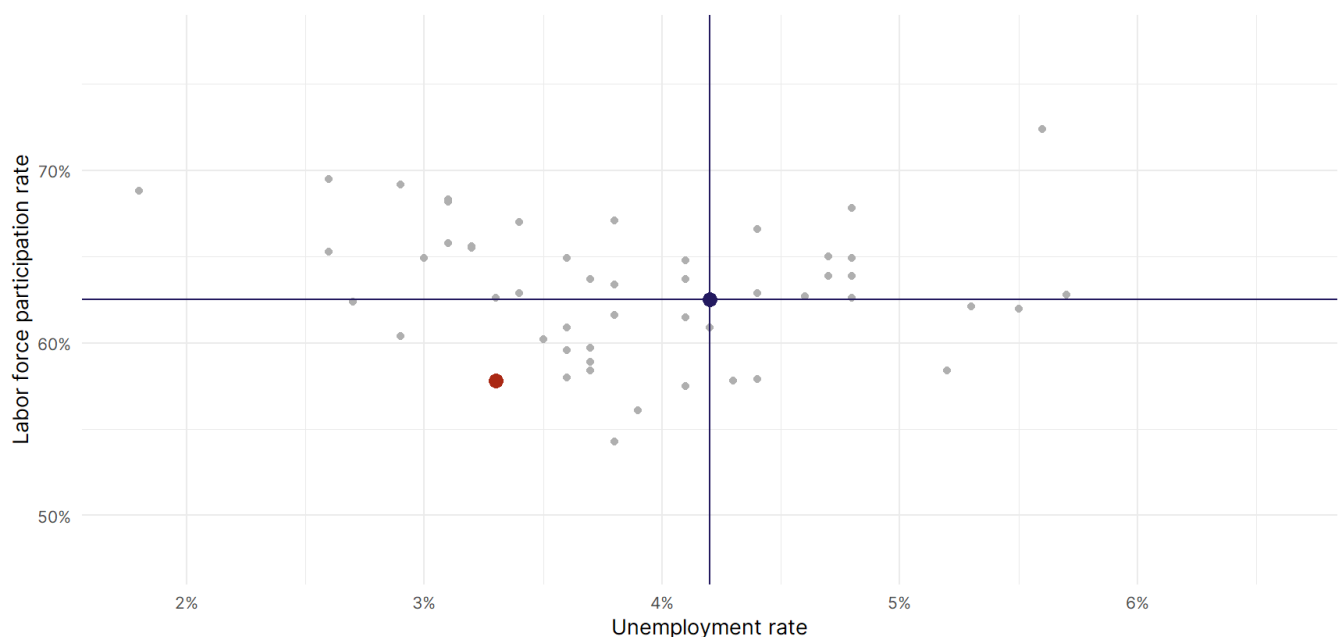
Alabama Labor Force

The labor force participation rate is the percentage of the civilian noninstitutionalized population age 16 and older who are employed or actively looking for work.

- The labor force participation rate in **Alabama rose to 57.8 percent in March from 57.7 percent in the prior month.**
- **Alabama is tied for 47th** in the nation.
- The 10-year high for the labor force participation rate in Alabama was **57.8 percent** occurring in March 2025, and the 10-year low was **55.4 percent** in April 2020.
- The national labor force participation rate **rose by 0.1 percentage points to 62.5 percent** in March.



Source: Bureau of Labor Statistics, data is seasonally adjusted



Source: Bureau of Labor Statistics, data is seasonally adjusted