



United States Congress

# Joint Economic Committee

Est. 1946

Republicans

Representative David Schweikert, *Chairman*



## Alaska

### Employment Update



March 2025 | Released April 18, 2025

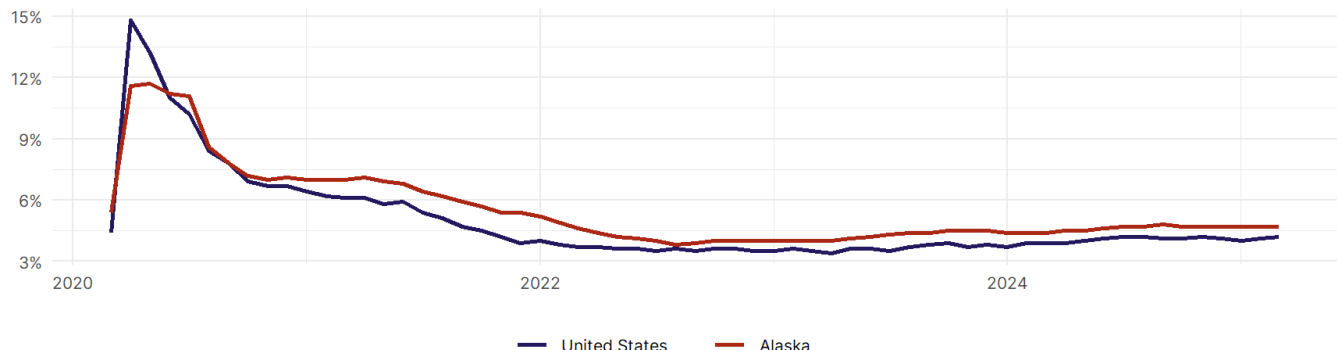
### United States Employment Snapshot

- In March, among the 50 states and the District of Columbia **unemployment fell in 15, rose in 17, and remained unchanged in 19.**
- The highest unemployment rate was 5.7 percent in **Nevada**, and the lowest was 1.8 percent in **South Dakota**. Nationally, the unemployment rate rose by 0.1 percentage point to 4.2 percent.
- In March, **payroll jobs rose in 38 states and fell in 12.** The largest payroll job percent increase was 0.5 percent in **Missouri**. The largest payroll job percent decline was 0.3 percent in **Connecticut**.

### Alaska Employment Snapshot

- In March, **Alaska added 600 net payroll jobs** and the **unemployment rate remained unchanged at 4.7 percent.** In the prior month, Alaska lost 2,300 net payroll jobs.
- Over the past 12 months, **Alaska added 4,700 net payroll jobs** and the **unemployment rate rose by 0.3 percentage points from 4.4 percent.**
- Nationally, nonfarm payrolls **rose by 228,000 in March, or 0.1 percent.** Alaska **is tied for 5th** in the nation for percentage gain in nonfarm payroll employment over the past 12 months.
- In March, **Alaska's private sector added 700 net private payroll jobs**, and over the past 12 months it added 4,400 private payroll jobs. In the prior month, Alaska lost 2,000 net private payroll jobs.
- In March, employment in Alaska **rose by 1,037**, and over the past 12 months it rose by 4,416.
- **Alaska's labor force participation rate rose to 65 percent** in March from 64.9 percent and **ranks 15th** in the nation. In the past 12 months, the labor force participation rate has risen by 0.5 percentage points.

Alaska  
Unemployment Rate

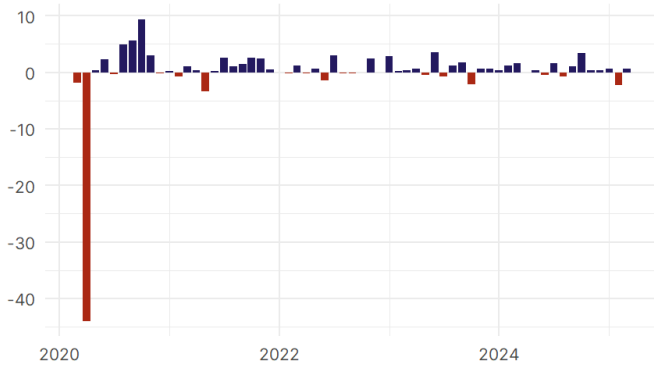


Source: Bureau of Labor Statistics, data is seasonally adjusted

## Alaska Payroll Employment

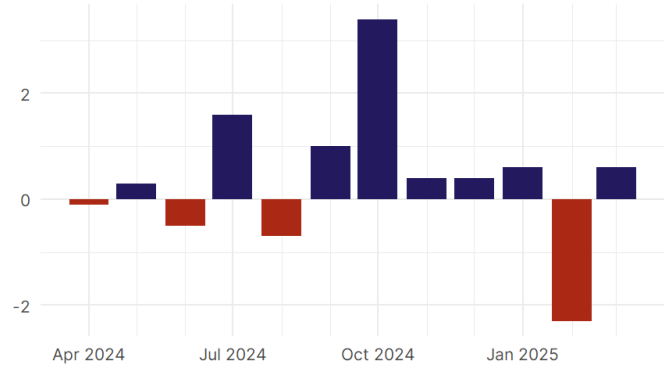
### Alaska Nonfarm Payroll Jobs

Monthly change, past five years (thousands)



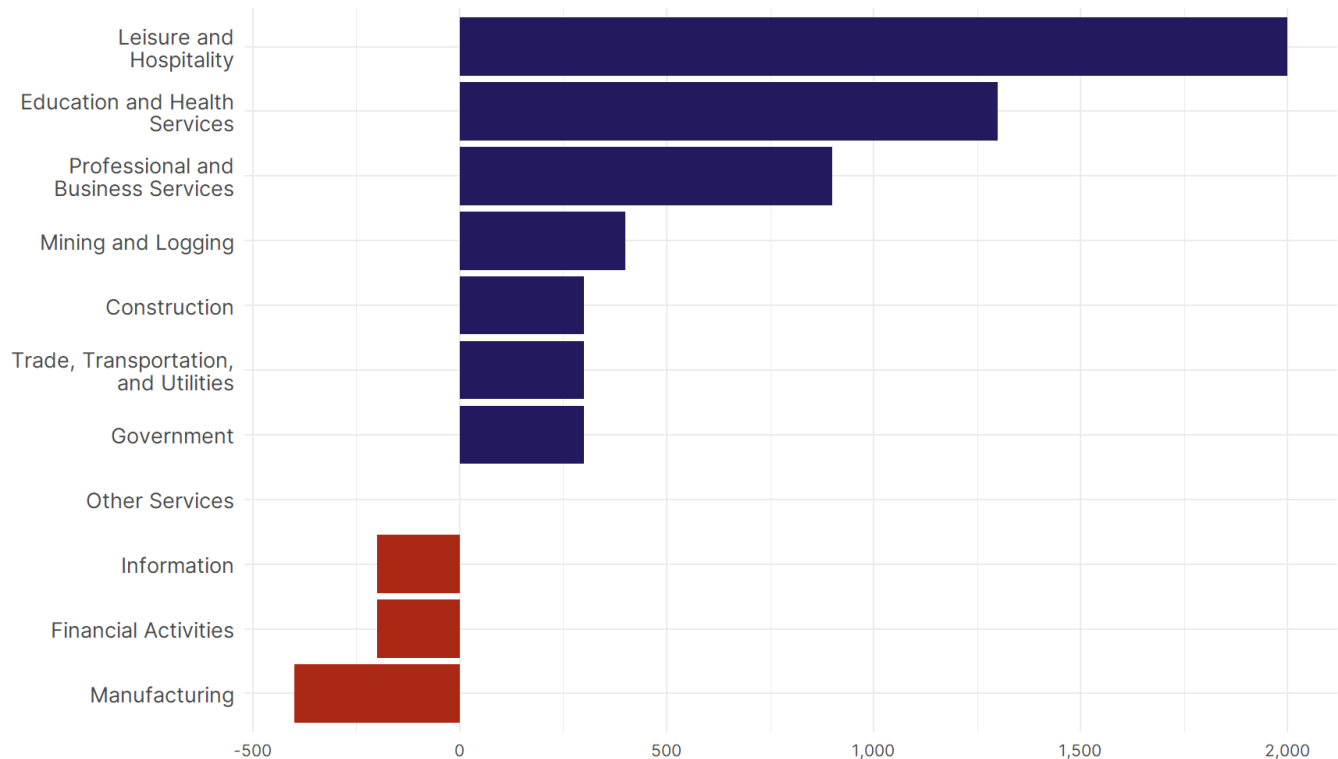
### Alaska Nonfarm Payroll Jobs

Monthly change, past 12 months (thousands)



- **Alaska added 600 net payroll jobs, or 0.2 percent**, on a seasonally adjusted basis during March. In the prior month, Alaska lost 2,300 jobs. Alaska nonfarm payroll employment has increased in **8 of the past 12 months**.
- Nationally, nonfarm payrolls **rose by 228,000 in March, or 0.1 percent**. Alaska is tied for 5th in the nation for percentage gain in nonfarm payroll employment over the past 12 months.
- **Alaska added 700 private sector jobs, or 0.3 percent**, on a seasonally adjusted basis during March. In the prior month, Alaska lost 2,000 jobs. Alaska private sector payroll employment has increased in **8 of the past 12 months**.
- Nationally, private sector payroll jobs **rose by 209,000 jobs in March, or 0.2 percent**. Alaska is tied for 3rd in the nation for percentage gain in private sector payroll employment over the past 12 months.

### Change in Alaska Payroll Employment by Sector over past 12 months

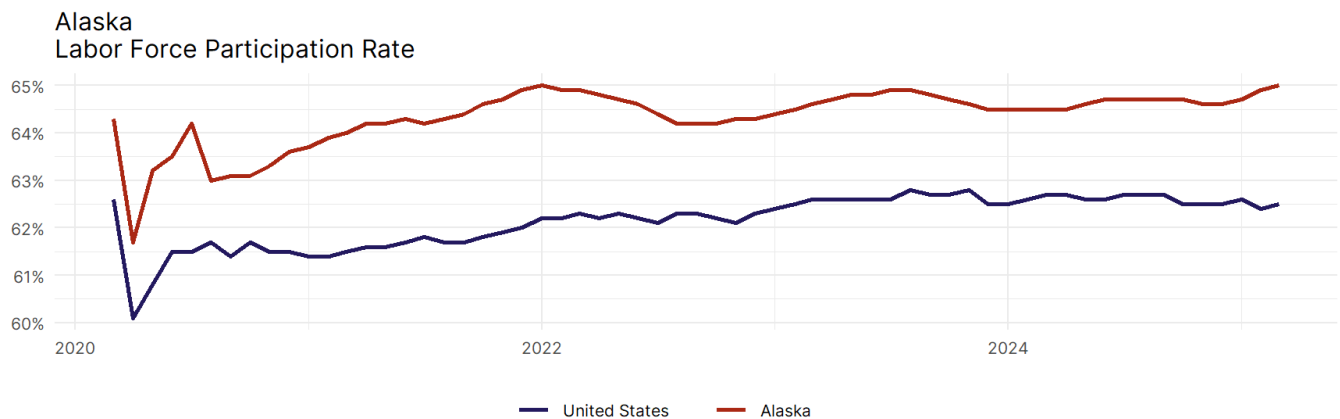


- The best performing sectors on a seasonally adjusted basis during March were **Professional and Business Services (400)** and **Trade, Transportation, and Utilities (400)**.
- The poorest performing sectors during the month were **Leisure and Hospitality tied with Government (-100)** and **Other Services (-300)**.
- The best performing sectors during the last 12 months were **Leisure and Hospitality (2,000)** and **Education and Health Services (1,300)**.
- The poorest performing sectors during the last 12 months were **Financial Activities (-200)** and **Manufacturing (-400)**.

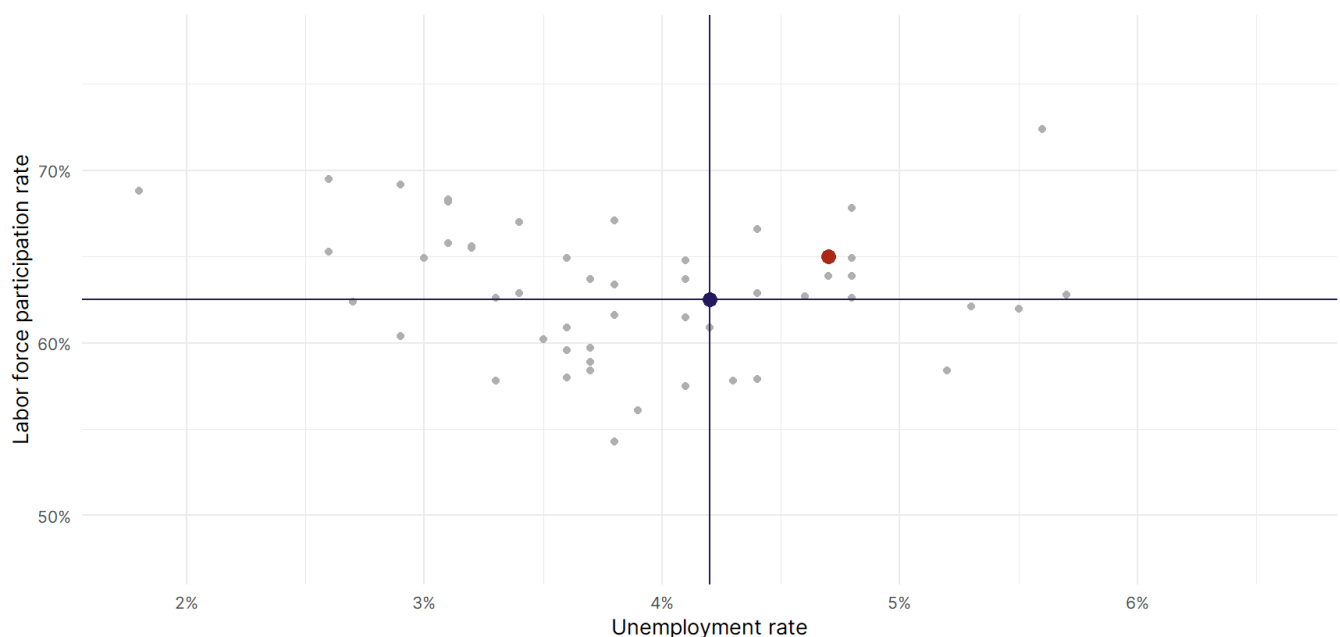
### Alaska Labor Force

The labor force participation rate is the percentage of the civilian noninstitutionalized population age 16 and older who are employed or actively looking for work.

- The labor force participation rate in **Alaska rose to 65 percent in March from 64.9 percent in the prior month.**
- **Alaska ranks 15th** in the nation.
- The 10-year high for the labor force participation rate in Alaska was **67 percent** occurring in April 2015, and the 10-year low was **61.7 percent** in April 2020.
- The national labor force participation rate **rose by 0.1 percentage points to 62.5 percent** in March.



Source: Bureau of Labor Statistics, data is seasonally adjusted



Source: Bureau of Labor Statistics, data is seasonally adjusted