



United States Congress

Joint Economic Committee

Est. 1946

Republicans

Representative David Schweikert, *Chairman*



Arizona Employment Update



March 2025 | Released April 18, 2025

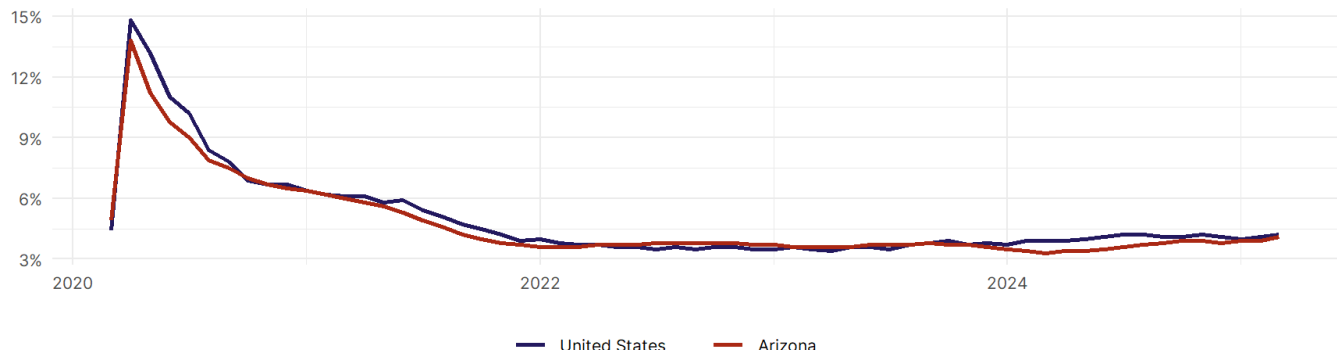
United States Employment Snapshot

- In March, among the 50 states and the District of Columbia **unemployment fell in 15, rose in 17, and remained unchanged in 19.**
- The highest unemployment rate was 5.7 percent in **Nevada**, and the lowest was 1.8 percent in **South Dakota**. Nationally, the unemployment rate rose by 0.1 percentage point to 4.2 percent.
- In March, **payroll jobs rose in 38 states and fell in 12.** The largest payroll job percent increase was 0.5 percent in **Missouri**. The largest payroll job percent decline was 0.3 percent in **Connecticut**.

Arizona Employment Snapshot

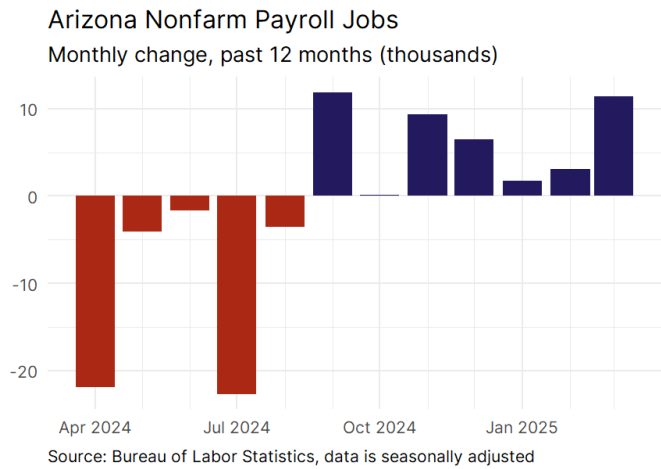
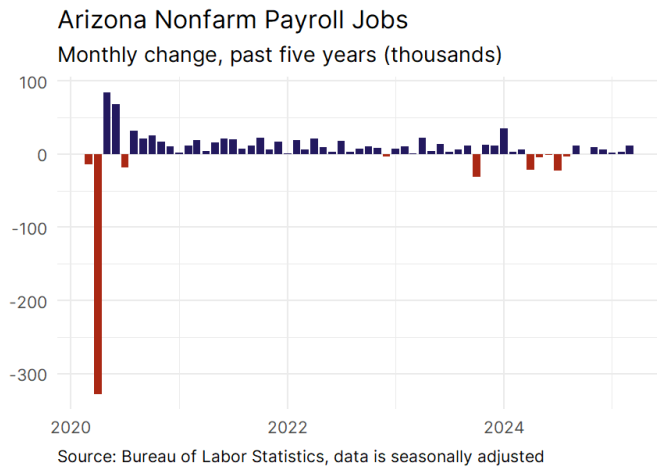
- In March, **Arizona added 11,400 net payroll jobs** and the **unemployment rate rose by 0.2 percentage point to 4.1 percent.** In the prior month, Arizona added 3,100 net payroll jobs.
- Over the past 12 months, **Arizona lost 9,800 net payroll jobs** and the **unemployment rate rose by 0.8 percentage points from 3.3 percent.**
- Nationally, nonfarm payrolls **rose by 228,000 in March, or 0.1 percent.** Arizona **is tied for 48th** in the nation for percentage gain in nonfarm payroll employment over the past 12 months.
- In March, **Arizona's private sector added 11,100 net private payroll jobs**, and over the past 12 months it lost 10,600 private payroll jobs. In the prior month, Arizona added 2,200 net private payroll jobs.
- In March, employment in Arizona **rose by 15**, and over the past 12 months it rose by 23,896.
- **Arizona's labor force participation rate remained steady at 61.5 percent** in March and **ranks 35th** in the nation. In the past 12 months, the labor force participation rate has fallen by 0.1 percentage points.

Arizona
Unemployment Rate

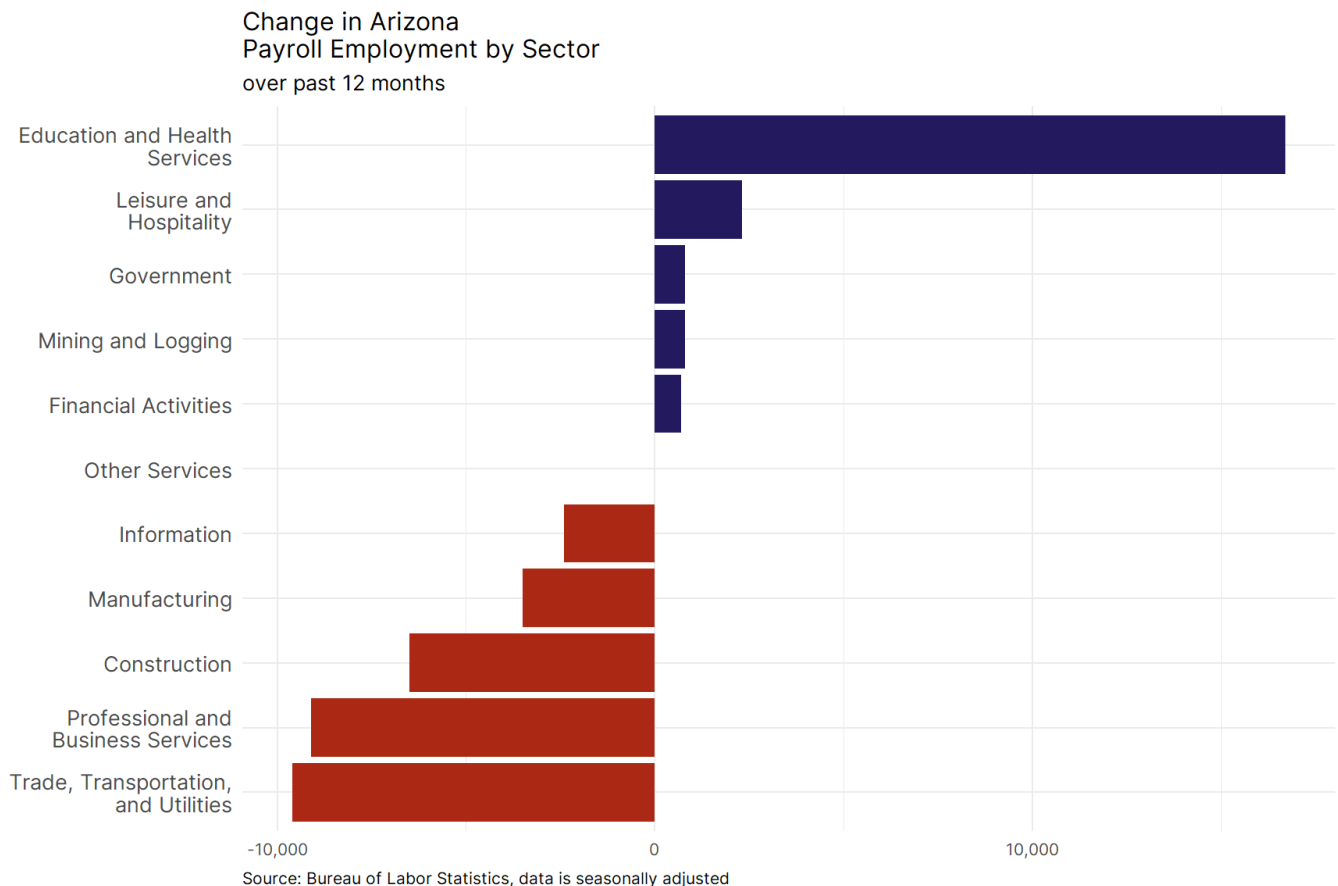


Source: Bureau of Labor Statistics, data is seasonally adjusted

Arizona Payroll Employment



- **Arizona added 11,400 net payroll jobs, or 0.4 percent,** on a seasonally adjusted basis during March. In the prior month, Arizona added 3,100 jobs. Arizona nonfarm payroll employment has increased in **7 of the past 12 months.**
- Nationally, nonfarm payrolls **rose by 228,000 in March, or 0.1 percent.** Arizona is tied for 48th in the nation for percentage gain in nonfarm payroll employment over the past 12 months.
- **Arizona added 11,100 private sector jobs, or 0.4 percent,** on a seasonally adjusted basis during March. In the prior month, Arizona added 2,200 jobs. Arizona private sector payroll employment has increased in **7 of the past 12 months.**
- Nationally, private sector payroll jobs **rose by 209,000 jobs in March, or 0.2 percent.** Arizona is tied for 48th in the nation for percentage gain in private sector payroll employment over the past 12 months.



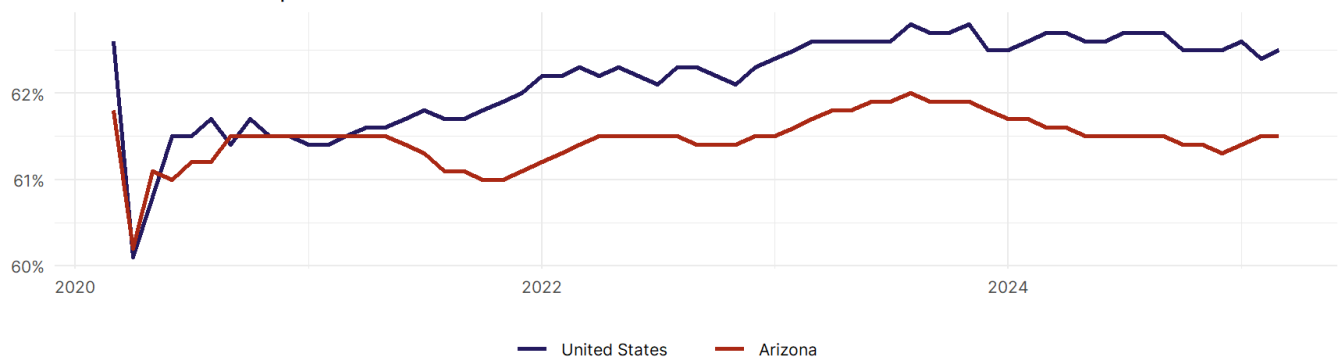
- The best performing sectors on a seasonally adjusted basis during March were **Professional and Business Services (4,600)** and **Education and Health Services (4,400)**.
- The poorest performing sectors during the month were **Other Services (-400)** and **Trade, Transportation, and Utilities (-2,800)**.
- The best performing sectors during the last 12 months were **Education and Health Services (16,700)** and **Leisure and Hospitality (2,300)**.
- The poorest performing sectors during the last 12 months were **Professional and Business Services (-9,100)** and **Trade, Transportation, and Utilities (-9,600)**.

Arizona Labor Force

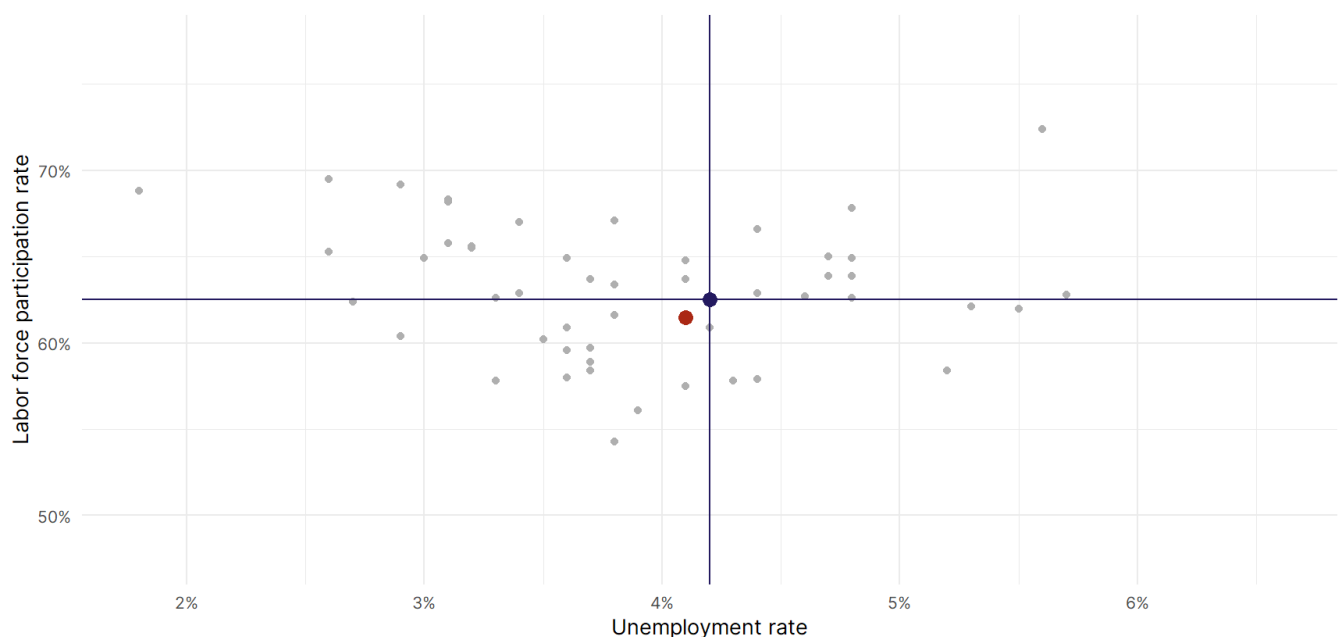
The labor force participation rate is the percentage of the civilian noninstitutionalized population age 16 and older who are employed or actively looking for work.

- The labor force participation rate in **Arizona remained unchanged at 61.5 percent in March.**
- **Arizona ranks 35th** in the nation.
- The 10-year high for the labor force participation rate in Arizona was **62.2 percent** occurring in December 2019, and the 10-year low was **60 percent** occurring in November 2015.
- The national labor force participation rate **rose by 0.1 percentage points to 62.5 percent** in March.

Arizona
Labor Force Participation Rate



Source: Bureau of Labor Statistics, data is seasonally adjusted



Source: Bureau of Labor Statistics, data is seasonally adjusted