



United States Congress

Joint Economic Committee

Est. 1946

Republicans

Representative David Schweikert, *Chairman*



Arkansas Employment Update



March 2025 | Released April 18, 2025

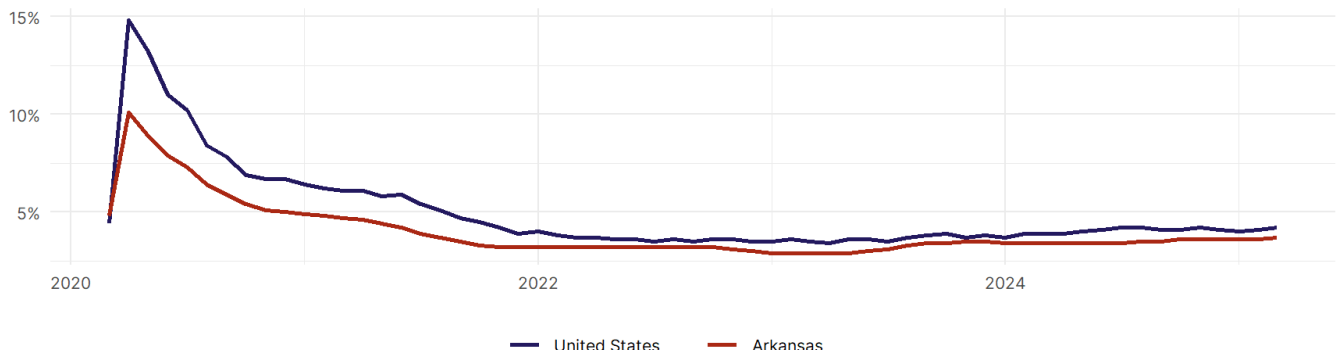
United States Employment Snapshot

- In March, among the 50 states and the District of Columbia **unemployment fell in 15, rose in 17, and remained unchanged in 19.**
- The highest unemployment rate was 5.7 percent in **Nevada**, and the lowest was 1.8 percent in **South Dakota**. Nationally, the unemployment rate rose by 0.1 percentage point to 4.2 percent.
- In March, **payroll jobs rose in 38 states and fell in 12.** The largest payroll job percent increase was 0.5 percent in **Missouri**. The largest payroll job percent decline was 0.3 percent in **Connecticut**.

Arkansas Employment Snapshot

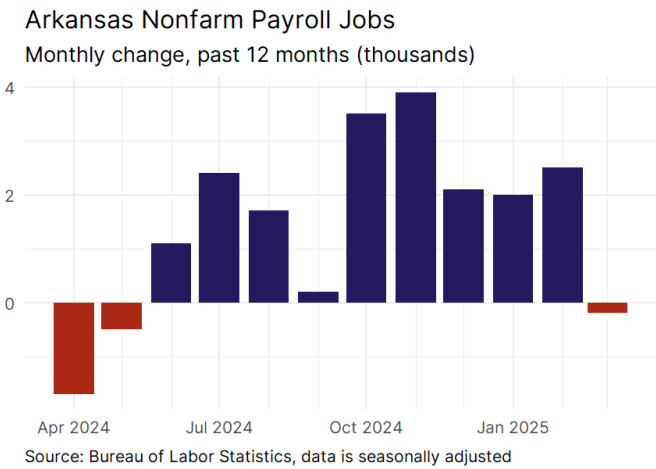
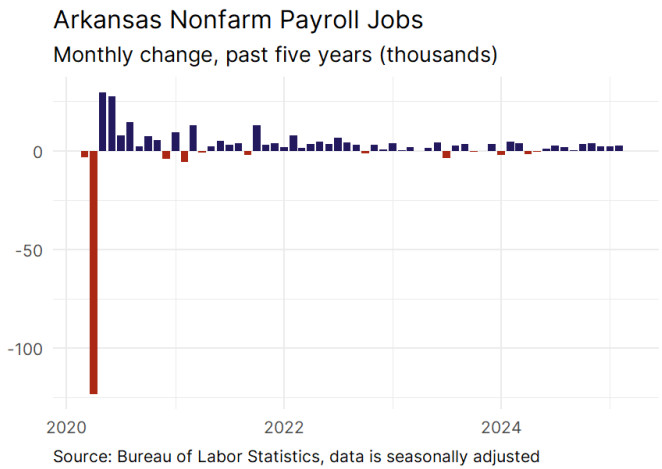
- In March, **Arkansas lost 200 net payroll jobs** and the **unemployment rate rose by 0.1 percentage point to 3.7 percent.** In the prior month, Arkansas added 2,500 net payroll jobs.
- Over the past 12 months, **Arkansas added 17,000 net payroll jobs** and the **unemployment rate rose by 0.3 percentage points from 3.4 percent.**
- Nationally, nonfarm payrolls **rose by 228,000 in March, or 0.1 percent.** Arkansas **is tied for 12th** in the nation for percentage gain in nonfarm payroll employment over the past 12 months.
- In March, **Arkansas's private sector lost 200 net private payroll jobs**, and over the past 12 months it added 16,700 private payroll jobs. In the prior month, Arkansas added 2,200 net private payroll jobs.
- In March, employment in Arkansas **fell by 242**, and over the past 12 months it rose by 15,686.
- **Arkansas's labor force participation rate remained steady at 58.4 percent** in March and **is tied for 43rd** in the nation. In the past 12 months, the labor force participation rate has risen by 0.4 percentage points.

Arkansas
Unemployment Rate

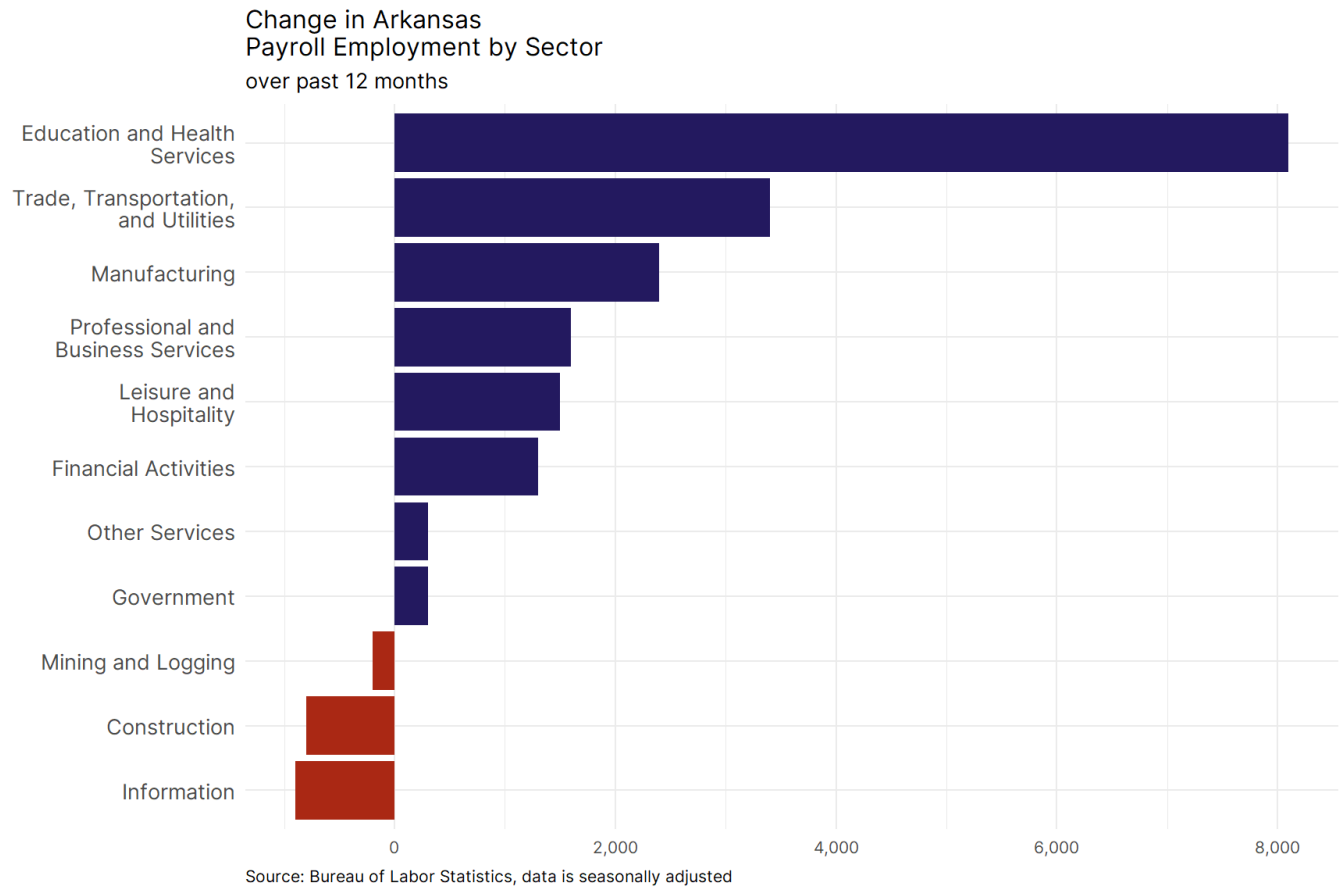


Source: Bureau of Labor Statistics, data is seasonally adjusted

Arkansas Payroll Employment



- **Arkansas lost 200 net payroll jobs, or 0 percent**, on a seasonally adjusted basis during March. In the prior month, Arkansas added 2,500 jobs. Arkansas nonfarm payroll employment has increased in **9 of the past 12 months**.
- Nationally, nonfarm payrolls **rose by 228,000 in March, or 0.1 percent**. Arkansas is tied for 12th in the nation for percentage gain in nonfarm payroll employment over the past 12 months.
- **Arkansas lost 200 private sector jobs, or 0 percent**, on a seasonally adjusted basis during March. In the prior month, Arkansas added 2,200 jobs. Arkansas private sector payroll employment has increased in **9 of the past 12 months**.
- Nationally, private sector payroll jobs **rose by 209,000 jobs in March, or 0.2 percent**. Arkansas is tied for 7th in the nation for percentage gain in private sector payroll employment over the past 12 months.



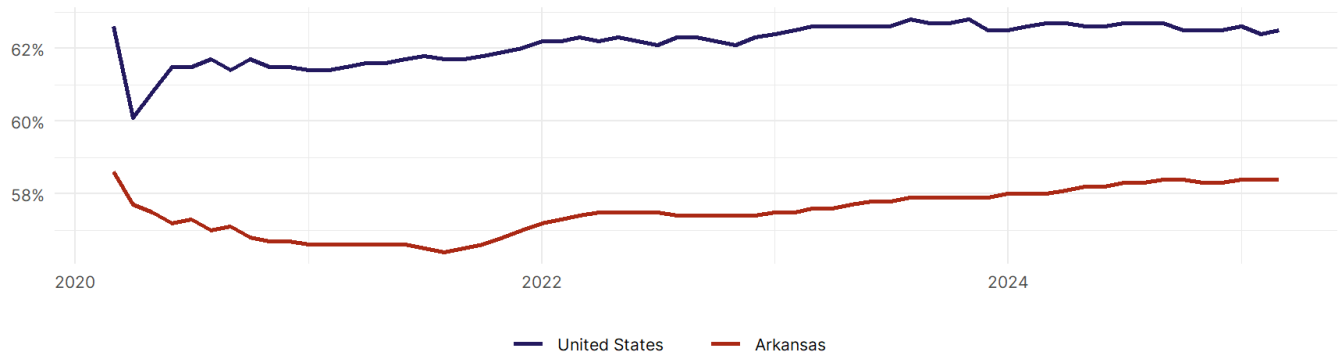
- The best performing sectors on a seasonally adjusted basis during March were **Education and Health Services (1,300)** and **Manufacturing (1,200)**.
- The poorest performing sectors during the month were **Information (-400)** and **Professional and Business Services (-2,100)**.
- The best performing sectors during the last 12 months were **Education and Health Services (8,100)** and **Trade, Transportation, and Utilities (3,400)**.
- The poorest performing sectors during the last 12 months were **Construction (-800)** and **Information (-900)**.

Arkansas Labor Force

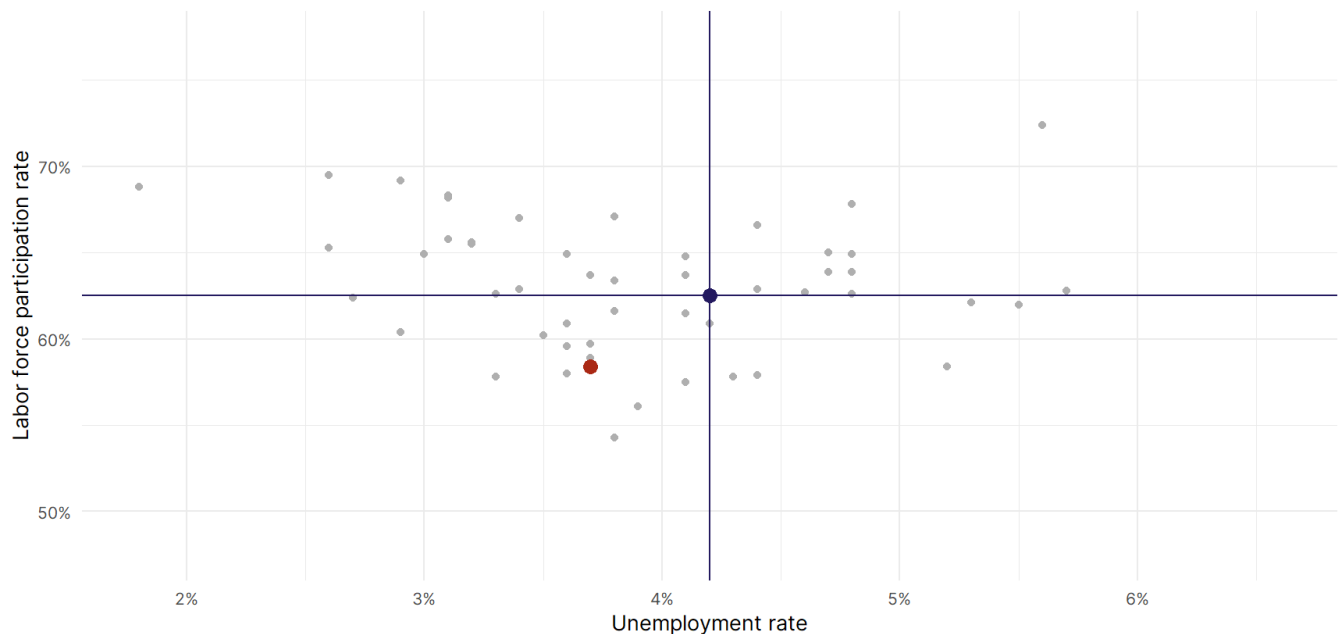
The labor force participation rate is the percentage of the civilian noninstitutionalized population age 16 and older who are employed or actively looking for work.

- The labor force participation rate in **Arkansas remained unchanged at 58.4 percent in March**.
- **Arkansas is tied for 43rd** in the nation.
- The 10-year high for the labor force participation rate in Arkansas was **58.6 percent** in March 2020, and the 10-year low was **56.4 percent** in August 2021.
- The national labor force participation rate **rose by 0.1 percentage points to 62.5 percent** in March.

Arkansas
Labor Force Participation Rate



Source: Bureau of Labor Statistics, data is seasonally adjusted



Source: Bureau of Labor Statistics, data is seasonally adjusted