



United States Congress

Joint Economic Committee

Est. 1946

Republicans

Representative David Schweikert, *Chairman*



California Employment Update



March 2025 | Released April 18, 2025

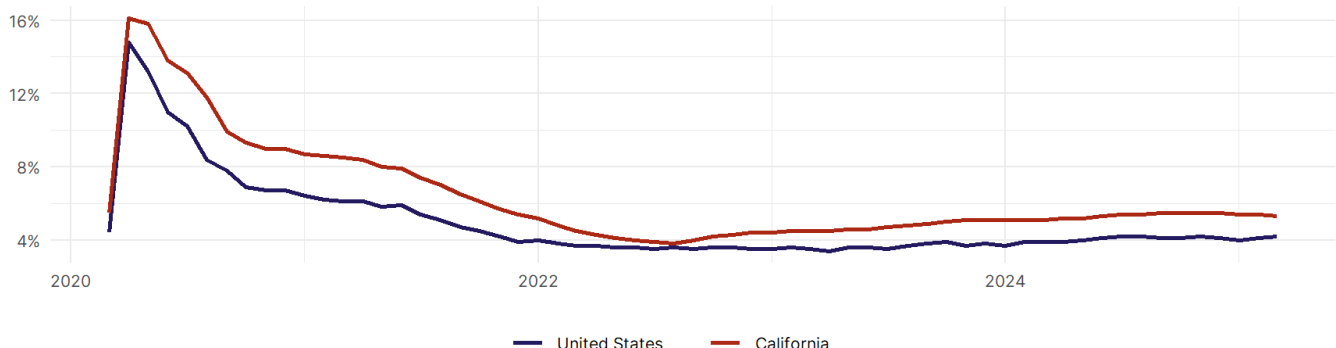
United States Employment Snapshot

- In March, among the 50 states and the District of Columbia **unemployment fell in 15, rose in 17, and remained unchanged in 19.**
- The highest unemployment rate was 5.7 percent in **Nevada**, and the lowest was 1.8 percent in **South Dakota**. Nationally, the unemployment rate rose by 0.1 percentage point to 4.2 percent.
- In March, **payroll jobs rose in 38 states and fell in 12.** The largest payroll job percent increase was 0.5 percent in **Missouri**. The largest payroll job percent decline was 0.3 percent in **Connecticut**.

California Employment Snapshot

- In March, **California lost 11,600 net payroll jobs** and the **unemployment rate fell by 0.1 percentage point to 5.3 percent.** In the prior month, California lost 21,800 net payroll jobs.
- Over the past 12 months, **California added 46,500 net payroll jobs** and the **unemployment rate rose by 0.2 percentage points from 5.1 percent.**
- Nationally, nonfarm payrolls **rose by 228,000 in March, or 0.1 percent.** California **is tied for 41st** in the nation for percentage gain in nonfarm payroll employment over the past 12 months.
- In March, **California's private sector lost 16,400 net private payroll jobs**, and over the past 12 months it lost 9,500 private payroll jobs. In the prior month, California lost 23,100 net private payroll jobs.
- In March, employment in California **rose by 14,658**, and over the past 12 months it rose by 92,127.
- **California's labor force participation rate remained steady at 62.1 percent** in March and **ranks 32nd** in the nation. In the past 12 months, the labor force participation rate has remained unchanged.

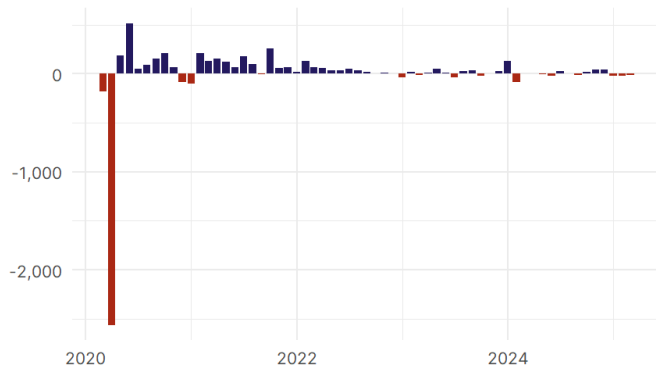
California
Unemployment Rate



Source: Bureau of Labor Statistics, data is seasonally adjusted

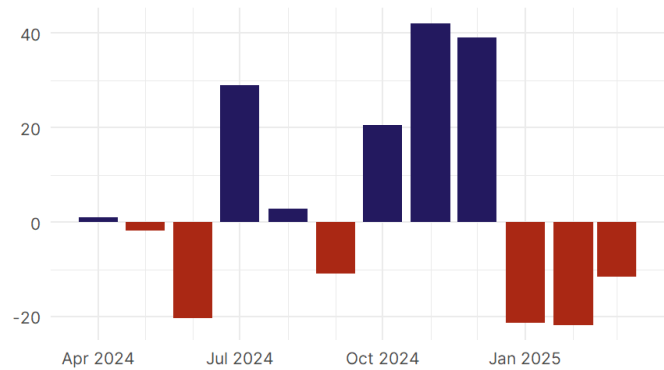
California Payroll Employment

California Nonfarm Payroll Jobs
Monthly change, past five years (thousands)



Source: Bureau of Labor Statistics, data is seasonally adjusted

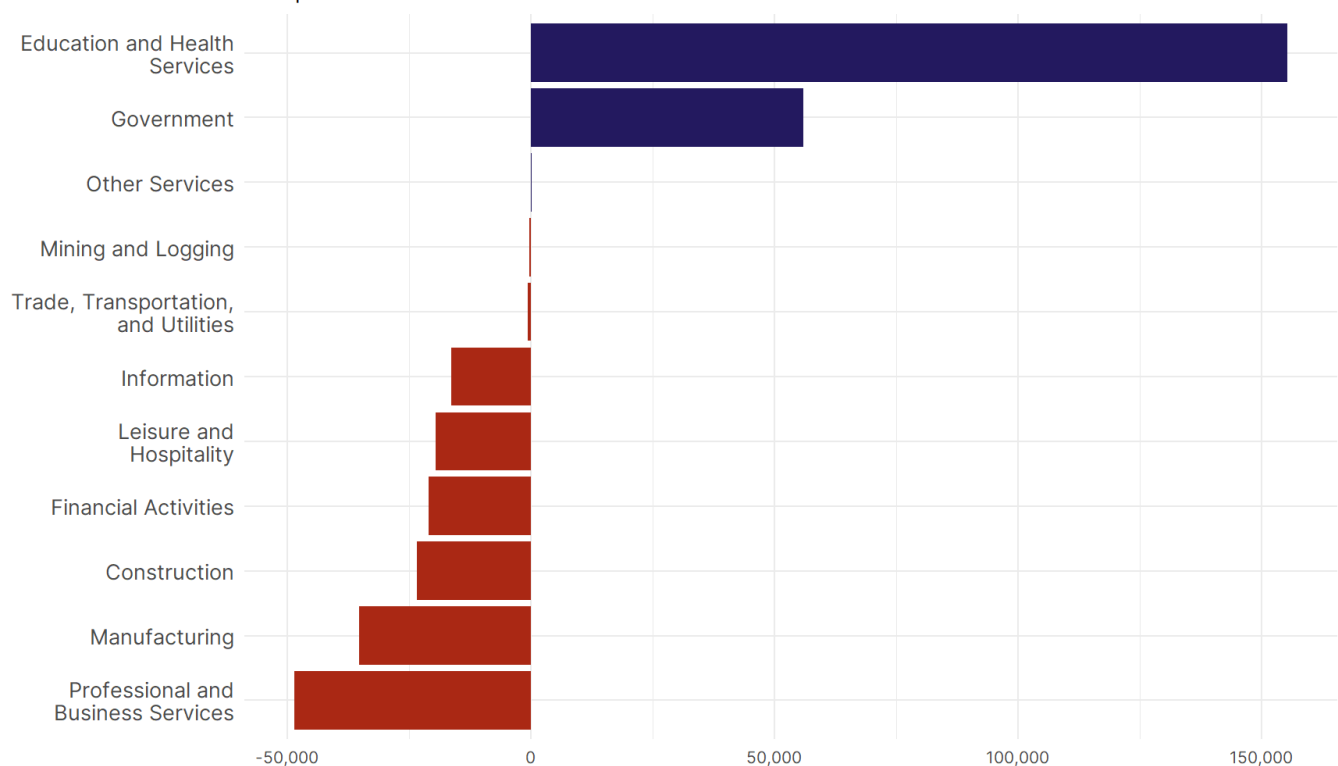
California Nonfarm Payroll Jobs
Monthly change, past 12 months (thousands)



Source: Bureau of Labor Statistics, data is seasonally adjusted

- **California lost 11,600 net payroll jobs, or -0.1 percent**, on a seasonally adjusted basis during March. In the prior month, California lost 21,800 jobs. California nonfarm payroll employment has increased in **6 of the past 12 months**.
- Nationally, nonfarm payrolls **rose by 228,000 in March, or 0.1 percent**. California is tied for 41st in the nation for percentage gain in nonfarm payroll employment over the past 12 months.
- **California lost 16,400 private sector jobs, or -0.1 percent**, on a seasonally adjusted basis during March. In the prior month, California lost 23,100 jobs. California private sector payroll employment has increased in **4 of the past 12 months**.
- Nationally, private sector payroll jobs **rose by 209,000 jobs in March, or 0.2 percent**. California is tied for 46th in the nation for percentage gain in private sector payroll employment over the past 12 months.

Change in California
Payroll Employment by Sector
over past 12 months



Source: Bureau of Labor Statistics, data is seasonally adjusted

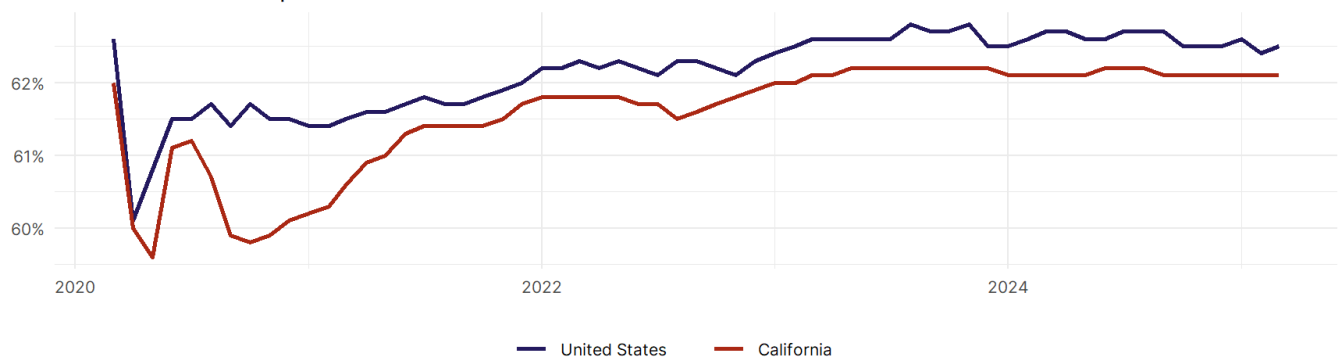
- The best performing sectors on a seasonally adjusted basis during March were **Education and Health Services (12,600)** and **Government (4,800)**.
- The poorest performing sectors during the month were **Leisure and Hospitality (-6,900)** and **Trade, Transportation, and Utilities (-10,200)**.
- The best performing sectors during the last 12 months were **Education and Health Services (155,400)** and **Government (56,000)**.
- The poorest performing sectors during the last 12 months were **Manufacturing (-35,300)** and **Professional and Business Services (-48,600)**.

California Labor Force

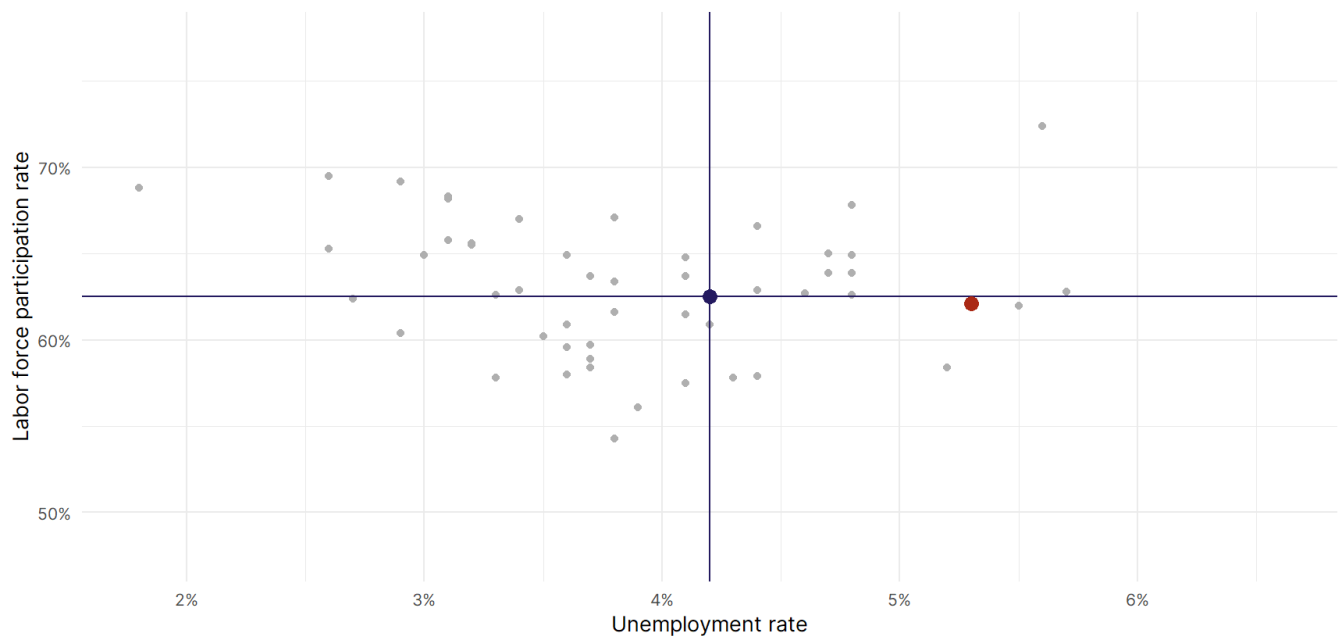
The labor force participation rate is the percentage of the civilian noninstitutionalized population age 16 and older who are employed or actively looking for work.

- The labor force participation rate in **California remained unchanged at 62.1 percent in March**.
- **California ranks 32nd** in the nation.
- The 10-year high for the labor force participation rate in California was **63 percent** in February 2020, and the 10-year low was **59.6 percent** in May 2020.
- The national labor force participation rate **rose by 0.1 percentage points to 62.5 percent** in March.

California
Labor Force Participation Rate



Source: Bureau of Labor Statistics, data is seasonally adjusted



Source: Bureau of Labor Statistics, data is seasonally adjusted