



United States Congress

# Joint Economic Committee

Est. 1946

Republicans

Representative David Schweikert, *Chairman*



## Hawaii Employment Update



March 2025 | Released April 18, 2025

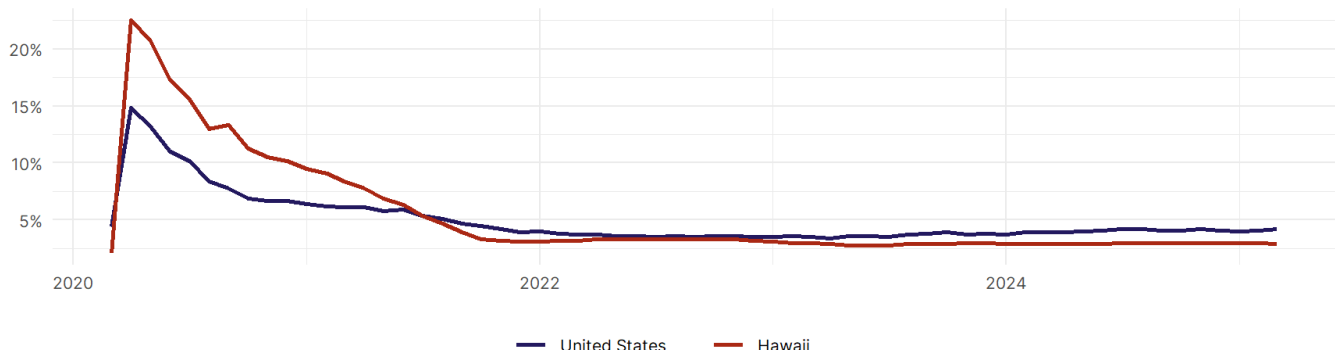
### United States Employment Snapshot

- In March, among the 50 states and the District of Columbia **unemployment fell in 15, rose in 17, and remained unchanged in 19.**
- The highest unemployment rate was 5.7 percent in **Nevada**, and the lowest was 1.8 percent in **South Dakota**. Nationally, the unemployment rate rose by 0.1 percentage point to 4.2 percent.
- In March, **payroll jobs rose in 38 states and fell in 12.** The largest payroll job percent increase was 0.5 percent in **Missouri**. The largest payroll job percent decline was 0.3 percent in **Connecticut**.

### Hawaii Employment Snapshot

- In March, **Hawaii added 2,500 net payroll jobs** and the **unemployment rate fell by 0.1 percentage point to 2.9 percent.** In the prior month, Hawaii added 1,200 net payroll jobs.
- Over the past 12 months, **Hawaii added 11,800 net payroll jobs** and the **unemployment rate remained unchanged.**
- Nationally, nonfarm payrolls **rose by 228,000 in March, or 0.1 percent.** Hawaii **ranks 4th** in the nation for percentage gain in nonfarm payroll employment over the past 12 months.
- In March, **Hawaii's private sector added 900 net private payroll jobs**, and over the past 12 months it added 8,800 private payroll jobs. In the prior month, Hawaii added 2,000 net private payroll jobs.
- In March, employment in Hawaii **rose by 2,088**, and over the past 12 months it rose by 8,542.
- **Hawaii's labor force participation rate rose to 60.4 percent** in March from 60.2 percent and **ranks 38th** in the nation. In the past 12 months, the labor force participation rate has risen by 0.6 percentage points.

Hawaii  
Unemployment Rate

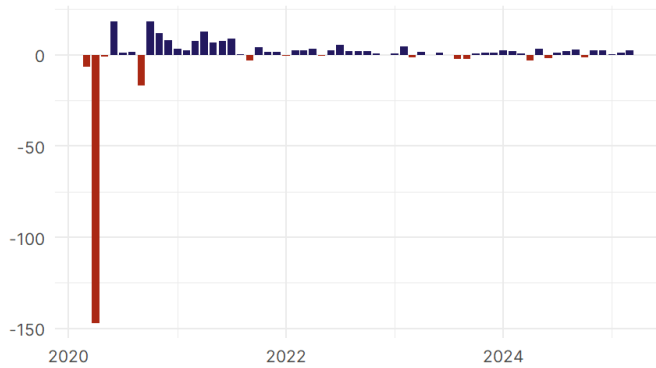


Source: Bureau of Labor Statistics, data is seasonally adjusted

## Hawaii Payroll Employment

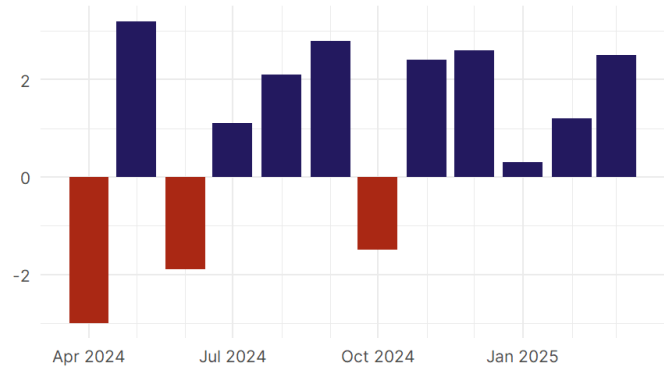
### Hawaii Nonfarm Payroll Jobs

Monthly change, past five years (thousands)



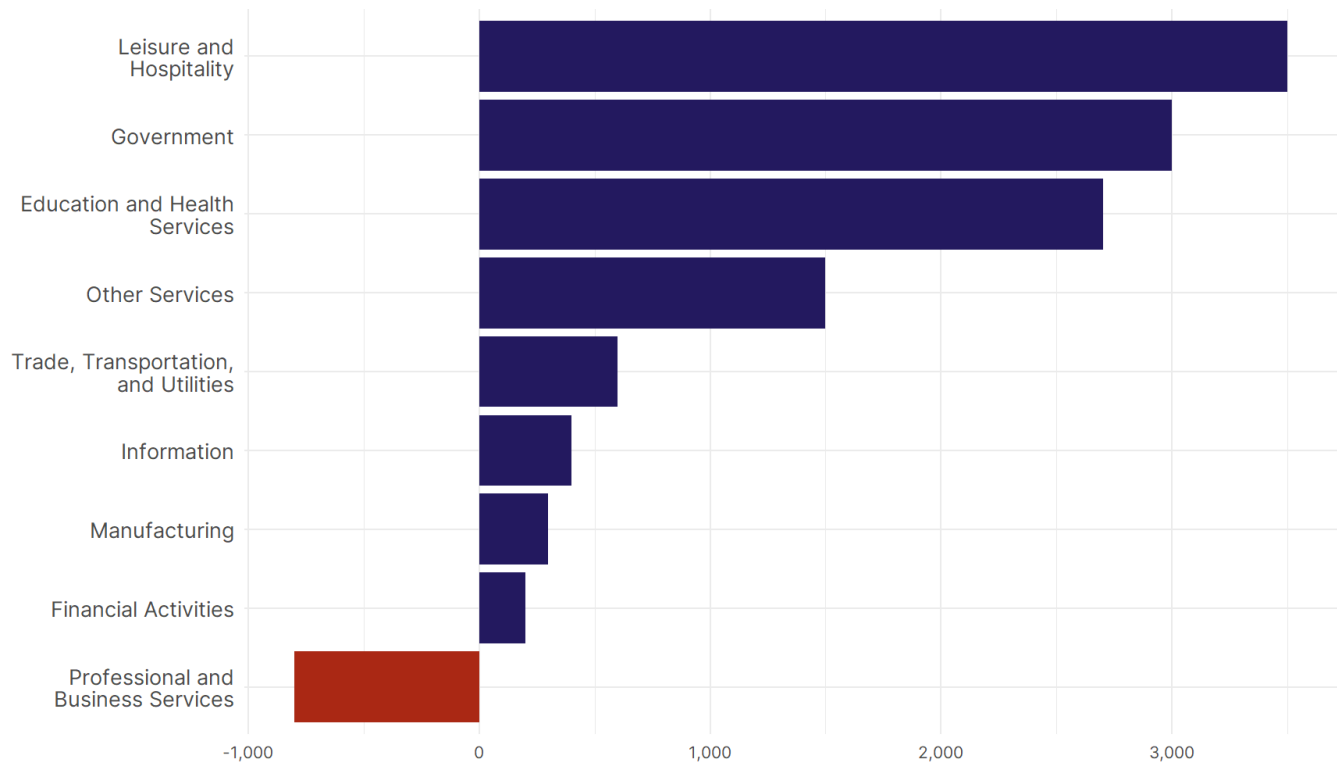
### Hawaii Nonfarm Payroll Jobs

Monthly change, past 12 months (thousands)



- **Hawaii added 2,500 net payroll jobs, or 0.4 percent,** on a seasonally adjusted basis during March. In the prior month, Hawaii added 1,200 jobs. Hawaii nonfarm payroll employment has increased in **9 of the past 12 months.**
- Nationally, nonfarm payrolls **rose by 228,000 in March, or 0.1 percent.** Hawaii ranks 4th in the nation for percentage gain in nonfarm payroll employment over the past 12 months.
- **Hawaii added 900 private sector jobs, or 0.2 percent,** on a seasonally adjusted basis during March. In the prior month, Hawaii added 2,000 jobs. Hawaii private sector payroll employment has increased in **8 of the past 12 months.**
- Nationally, private sector payroll jobs **rose by 209,000 jobs in March, or 0.2 percent.** Hawaii is tied for 3rd in the nation for percentage gain in private sector payroll employment over the past 12 months.

### Change in Hawaii Payroll Employment by Sector over past 12 months

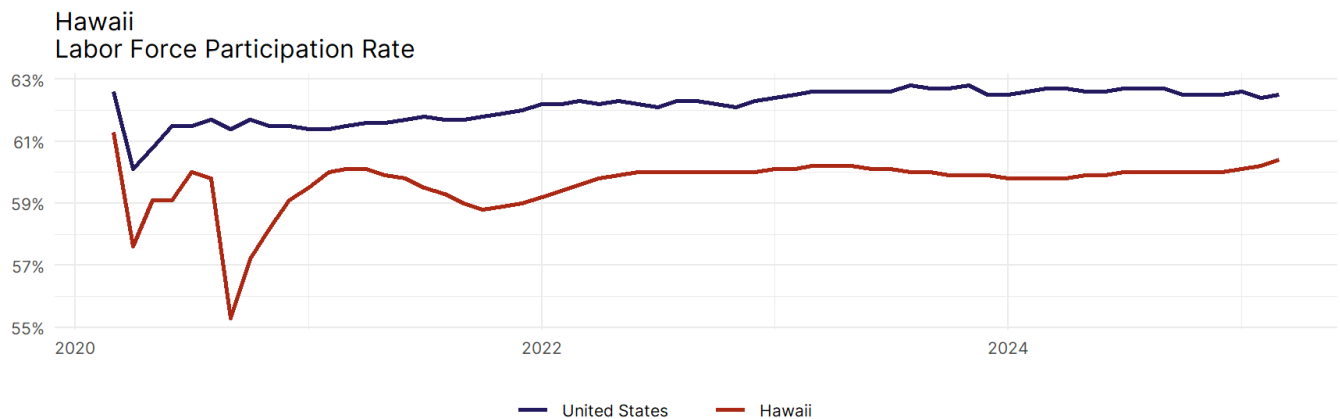


- The best performing sectors on a seasonally adjusted basis during March were **Government (1,600)** and **Leisure and Hospitality (1,300)**.
- The poorest performing sectors during the month were **Trade, Transportation, and Utilities (-200)** and **Financial Activities (-200)**.
- The best performing sectors during the last 12 months were **Leisure and Hospitality (3,500)** and **Government (3,000)**.
- The poorest performing sectors during the last 12 months were **Financial Activities (200)** and **Professional and Business Services (-800)**.

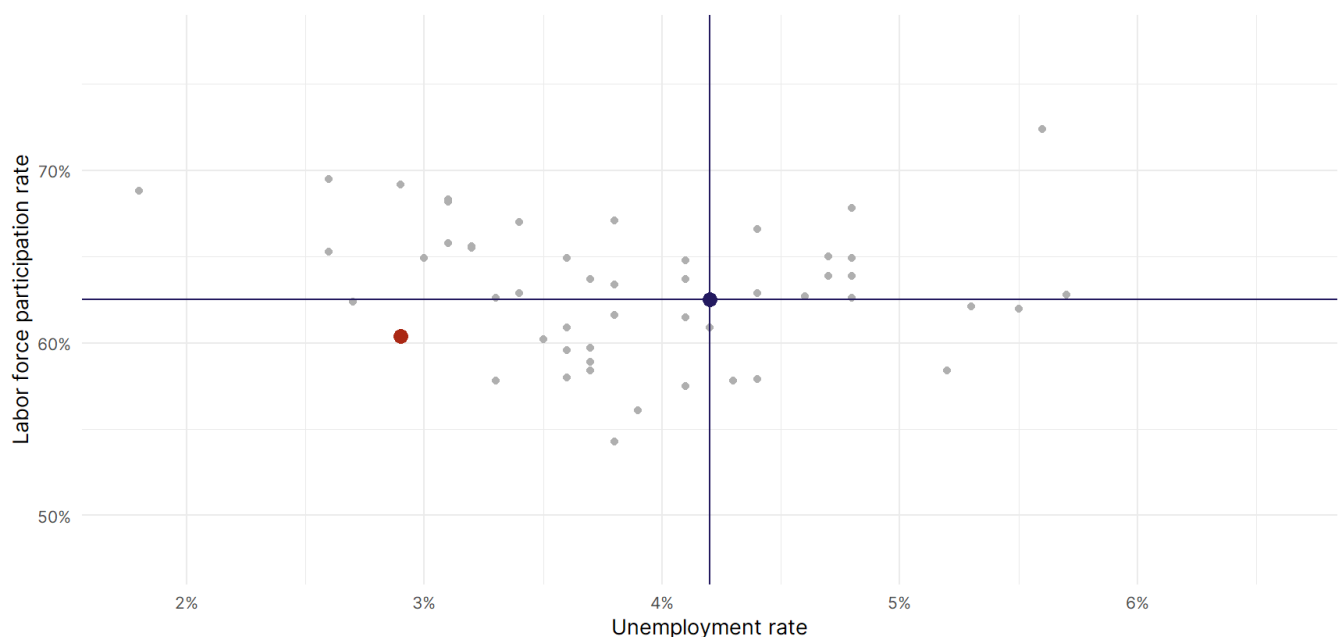
### Hawaii Labor Force

The labor force participation rate is the percentage of the civilian noninstitutionalized population age 16 and older who are employed or actively looking for work.

- The labor force participation rate in **Hawaii rose to 60.4 percent in March from 60.2 percent in the prior month**.
- **Hawaii ranks 38th** in the nation.
- The 10-year high for the labor force participation rate in Hawaii was **62.4 percent** in March 2017, and the 10-year low was **55.3 percent** in September 2020.
- The national labor force participation rate **rose by 0.1 percentage points to 62.5 percent** in March.



Source: Bureau of Labor Statistics, data is seasonally adjusted



Source: Bureau of Labor Statistics, data is seasonally adjusted