



United States Congress

Joint Economic Committee

Est. 1946

Republicans

Representative David Schweikert, *Chairman*



Idaho

Employment Update



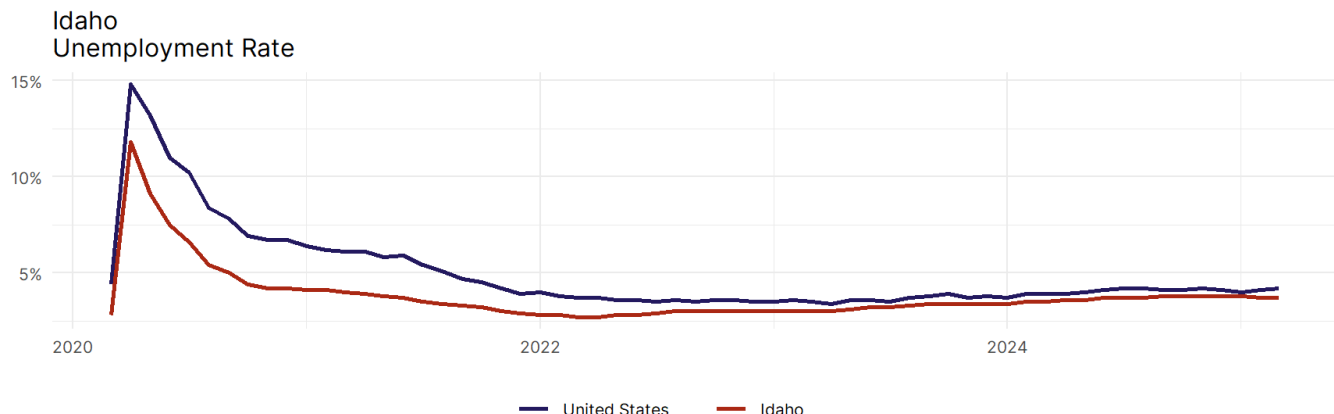
March 2025 | Released April 18, 2025

United States Employment Snapshot

- In March, among the 50 states and the District of Columbia **unemployment fell in 15, rose in 17, and remained unchanged in 19.**
- The highest unemployment rate was 5.7 percent in **Nevada**, and the lowest was 1.8 percent in **South Dakota**. Nationally, the unemployment rate rose by 0.1 percentage point to 4.2 percent.
- In March, **payroll jobs rose in 38 states and fell in 12.** The largest payroll job percent increase was 0.5 percent in **Missouri**. The largest payroll job percent decline was 0.3 percent in **Connecticut**.

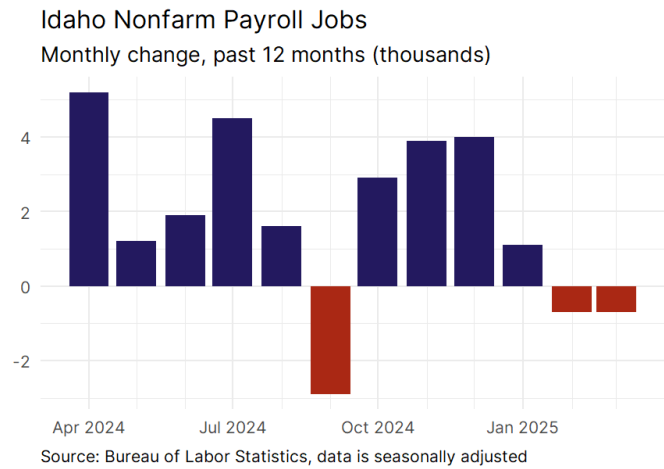
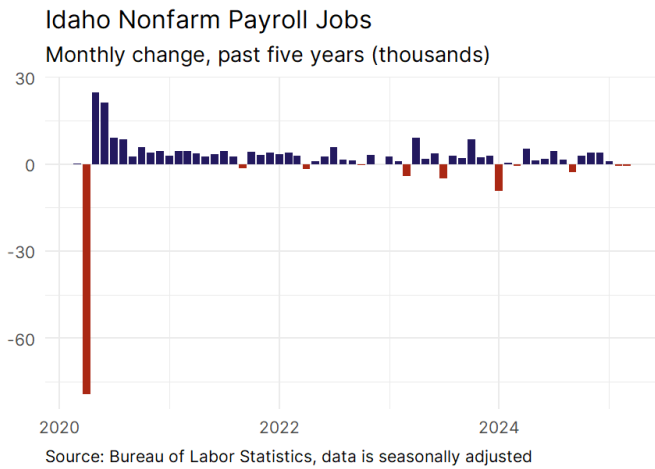
Idaho Employment Snapshot

- In March, **Idaho lost 700 net payroll jobs** and the **unemployment rate remained unchanged at 3.7 percent**. In the prior month, Idaho lost 700 net payroll jobs.
- Over the past 12 months, **Idaho added 22,000 net payroll jobs** and the **unemployment rate rose by 0.2 percentage points from 3.5 percent**.
- Nationally, nonfarm payrolls **rose by 228,000 in March, or 0.1 percent**. Idaho **ranks 1st** in the nation for percentage gain in nonfarm payroll employment over the past 12 months.
- In March, **Idaho's private sector lost 1,100 net private payroll jobs**, and over the past 12 months it added 22,100 private payroll jobs. In the prior month, Idaho added 400 net private payroll jobs.
- In March, employment in Idaho **fell by 339**, and over the past 12 months it rose by 14,326.
- **Idaho's labor force participation rate fell to 63.7 percent** in March from 63.8 percent and **is tied for 22nd** in the nation. In the past 12 months, the labor force participation rate has fallen by 0.1 percentage points.

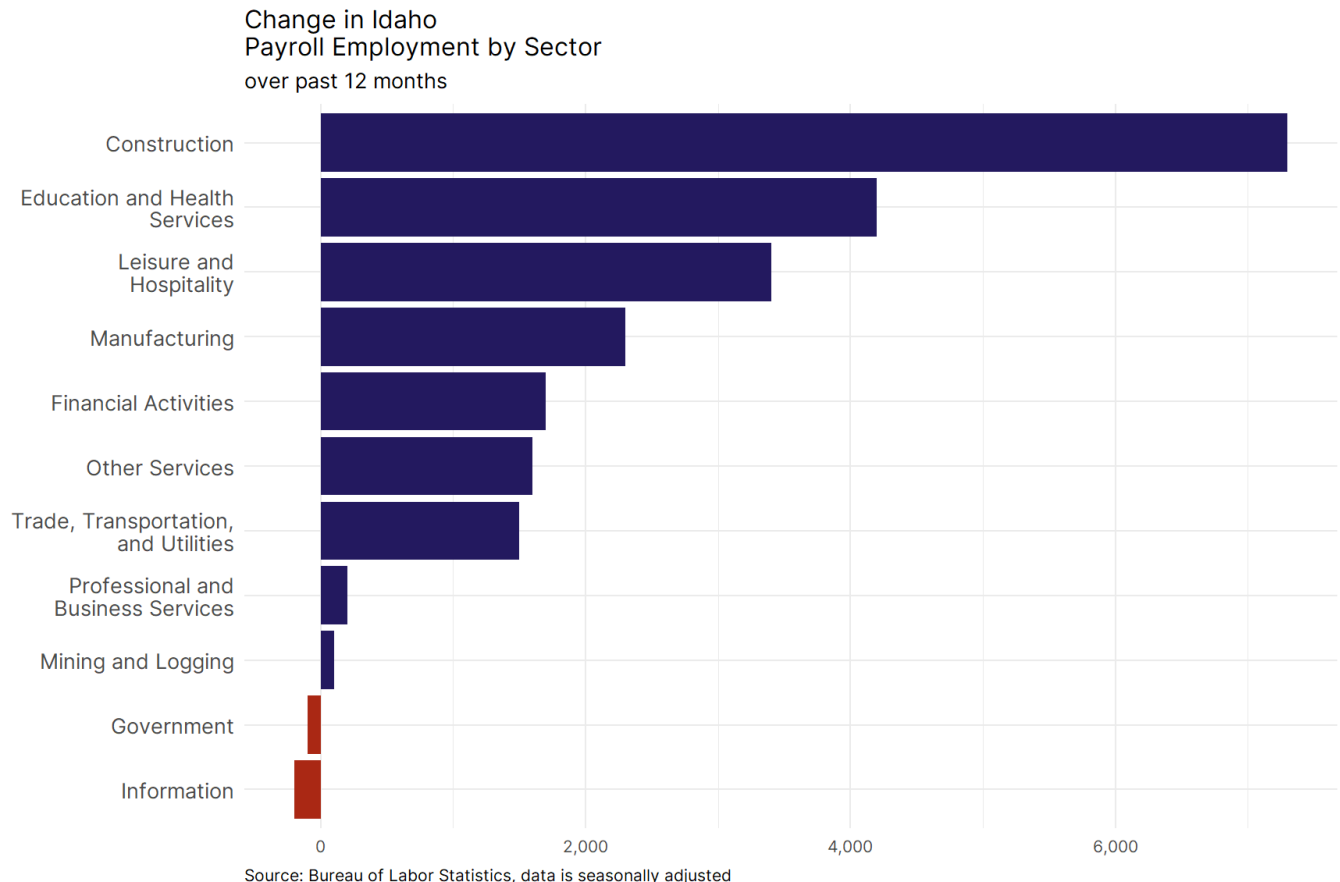


Source: Bureau of Labor Statistics, data is seasonally adjusted

Idaho Payroll Employment



- **Idaho lost 700 net payroll jobs, or -0.1 percent**, on a seasonally adjusted basis during March. In the prior month, Idaho lost 700 jobs. Idaho nonfarm payroll employment has increased in **9 of the past 12 months**.
- Nationally, nonfarm payrolls **rose by 228,000 in March, or 0.1 percent**. Idaho ranks 1st in the nation for percentage gain in nonfarm payroll employment over the past 12 months.
- **Idaho lost 1,100 private sector jobs, or -0.1 percent**, on a seasonally adjusted basis during March. In the prior month, Idaho added 400 jobs. Idaho private sector payroll employment has increased in **9 of the past 12 months**.
- Nationally, private sector payroll jobs **rose by 209,000 jobs in March, or 0.2 percent**. Idaho ranks 1st in the nation for percentage gain in private sector payroll employment over the past 12 months.

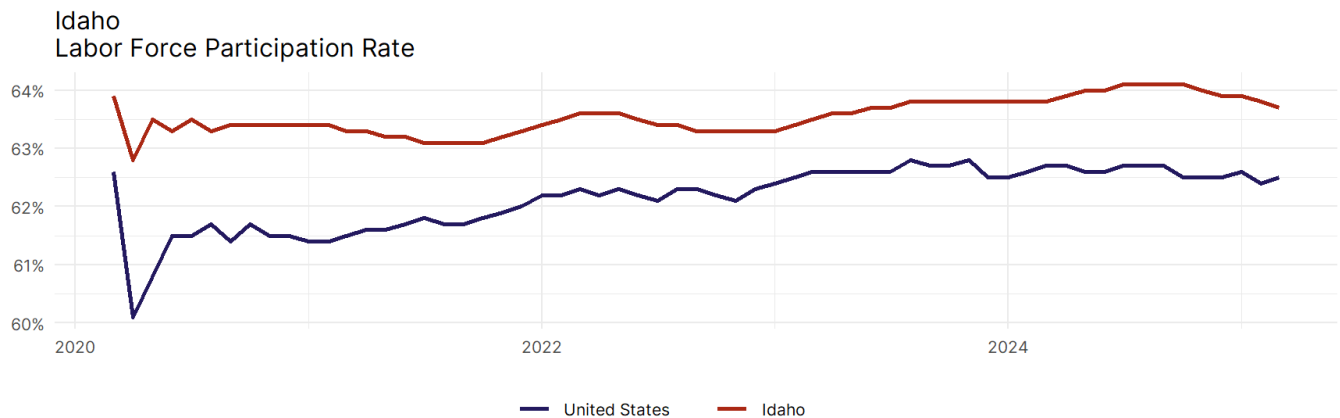


- The best performing sectors on a seasonally adjusted basis during March were **Other Services (600)** and **Professional and Business Services (500)**.
- The poorest performing sectors during the month were **Information (-100)** and **Education and Health Services (-2,900)**.
- The best performing sectors during the last 12 months were **Construction (7,300)** and **Education and Health Services (4,200)**.
- The poorest performing sectors during the last 12 months were **Government (-100)** and **Information (-200)**.

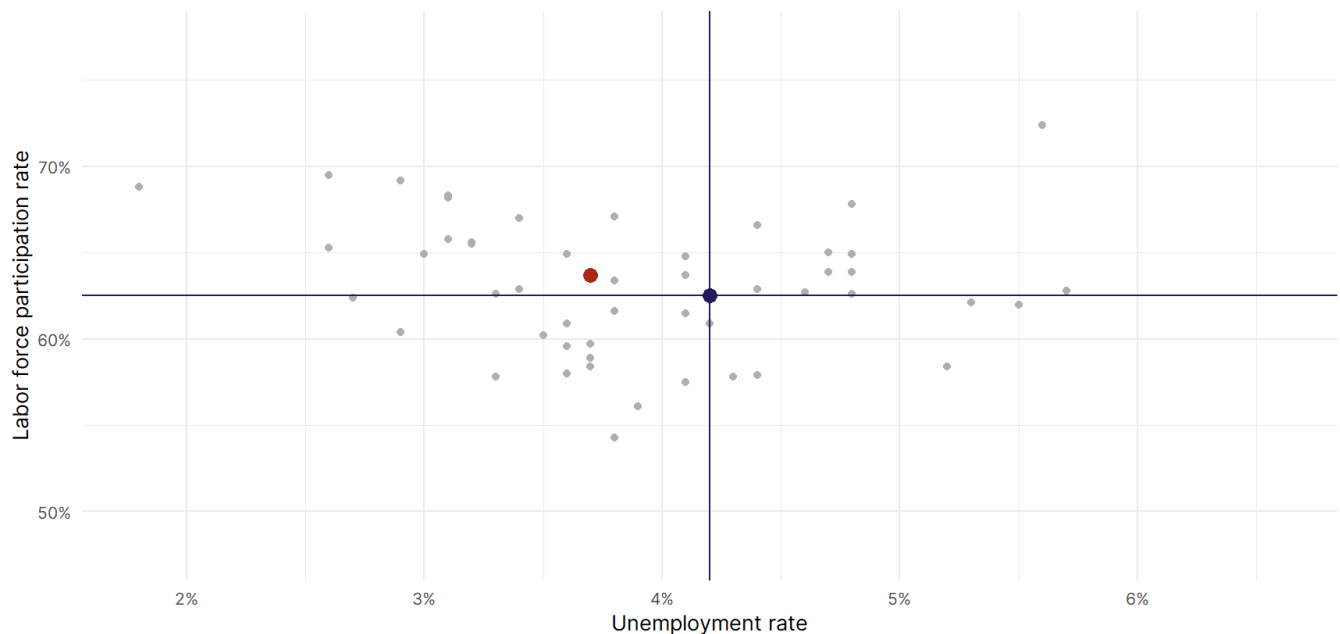
Idaho Labor Force

The labor force participation rate is the percentage of the civilian noninstitutionalized population age 16 and older who are employed or actively looking for work.

- The labor force participation rate in **Idaho fell to 63.7 percent in March from 63.8 percent in the prior month**.
- **Idaho is tied for 22nd** in the nation.
- The 10-year high for the labor force participation rate in Idaho was **64.5 percent** occurring in December 2019, and the 10-year low was **62.8 percent** in April 2020.
- The national labor force participation rate **rose by 0.1 percentage points to 62.5 percent** in March.



Source: Bureau of Labor Statistics, data is seasonally adjusted



Source: Bureau of Labor Statistics, data is seasonally adjusted