



United States Congress

Joint Economic Committee

Est. 1946

Republicans

Representative David Schweikert, *Chairman*



Illinois Employment Update



March 2025 | Released April 18, 2025

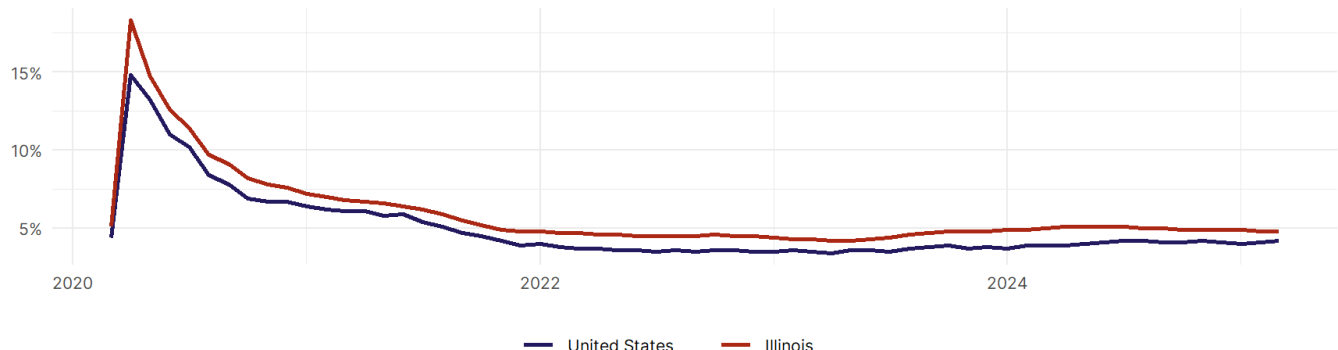
United States Employment Snapshot

- In March, among the 50 states and the District of Columbia **unemployment fell in 15, rose in 17, and remained unchanged in 19.**
- The highest unemployment rate was 5.7 percent in **Nevada**, and the lowest was 1.8 percent in **South Dakota**. Nationally, the unemployment rate rose by 0.1 percentage point to 4.2 percent.
- In March, **payroll jobs rose in 38 states and fell in 12.** The largest payroll job percent increase was 0.5 percent in **Missouri**. The largest payroll job percent decline was 0.3 percent in **Connecticut**.

Illinois Employment Snapshot

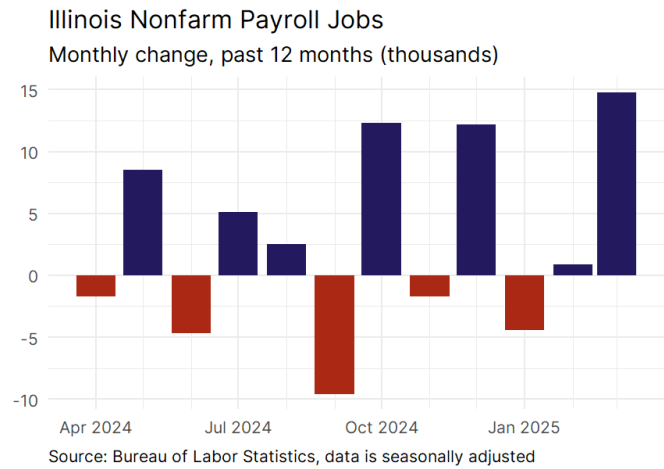
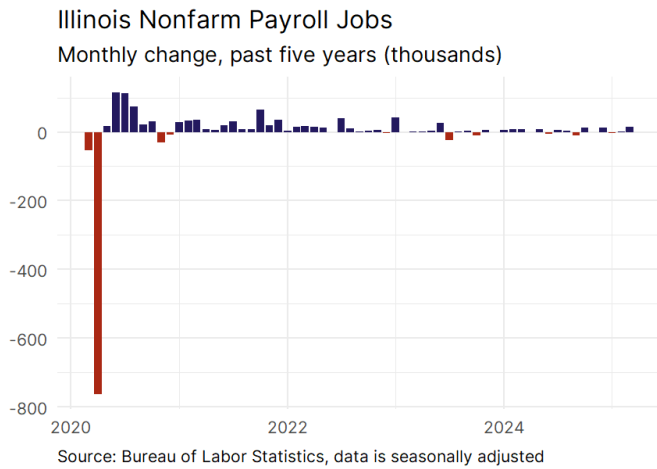
- In March, **Illinois added 14,800 net payroll jobs** and the **unemployment rate remained unchanged at 4.8 percent.** In the prior month, Illinois added 900 net payroll jobs.
- Over the past 12 months, **Illinois added 34,200 net payroll jobs** and the **unemployment rate fell by 0.2 percentage points from 5 percent.**
- Nationally, nonfarm payrolls **rose by 228,000 in March, or 0.1 percent.** Illinois **is tied for 32nd** in the nation for percentage gain in nonfarm payroll employment over the past 12 months.
- In March, **Illinois's private sector added 10,300 net private payroll jobs**, and over the past 12 months it added 13,300 private payroll jobs. In the prior month, Illinois added 1,000 net private payroll jobs.
- In March, employment in Illinois **fell by 6,584**, and over the past 12 months it rose by 48,966.
- **Illinois's labor force participation rate fell to 64.9 percent** in March from 65 percent and **is tied for 16th** in the nation. In the past 12 months, the labor force participation rate has remained unchanged.

Illinois
Unemployment Rate

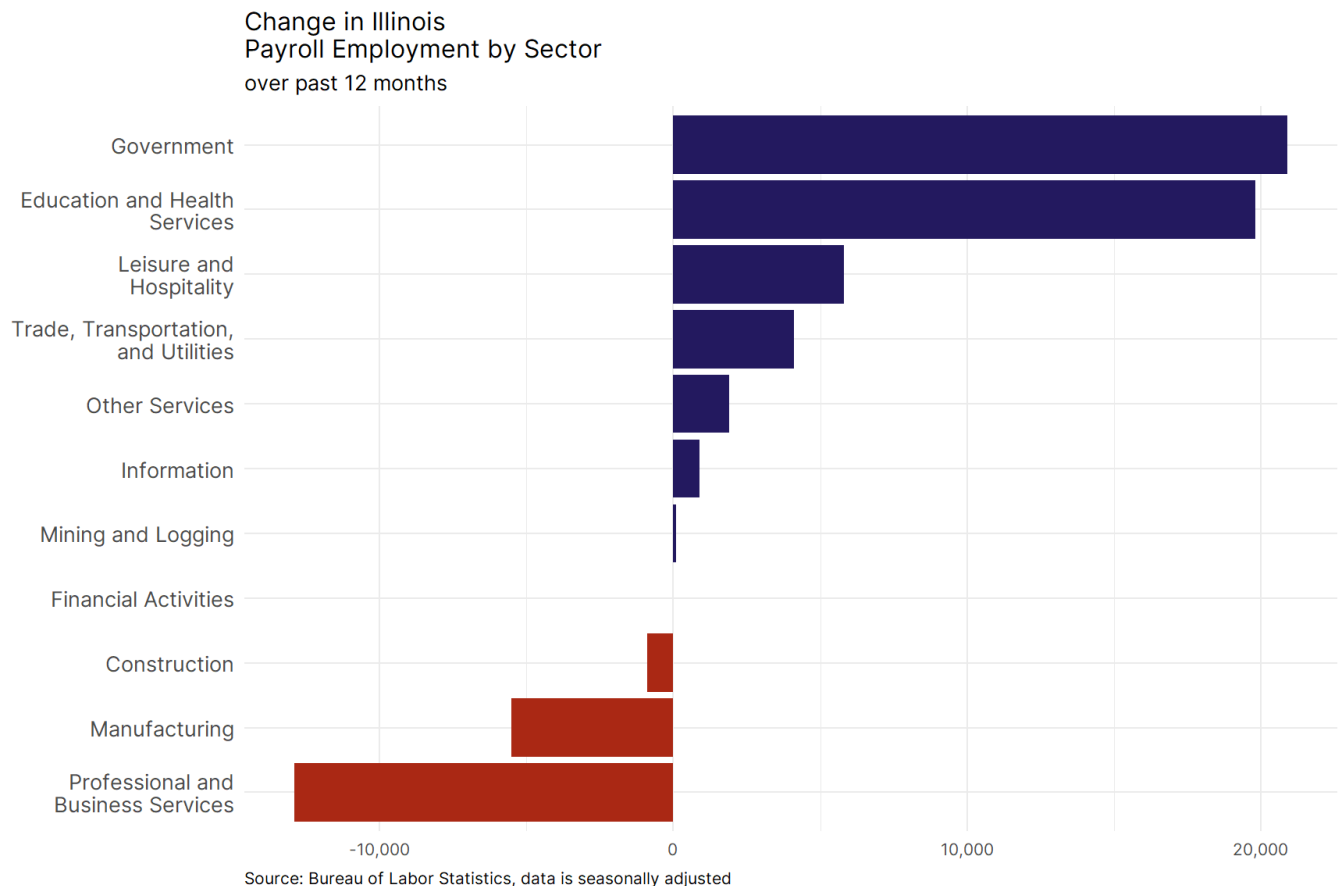


Source: Bureau of Labor Statistics, data is seasonally adjusted

Illinois Payroll Employment



- **Illinois added 14,800 net payroll jobs, or 0.2 percent**, on a seasonally adjusted basis during March. In the prior month, Illinois added 900 jobs. Illinois nonfarm payroll employment has increased in **7 of the past 12 months**.
- Nationally, nonfarm payrolls **rose by 228,000 in March, or 0.1 percent**. Illinois is tied for 32nd in the nation for percentage gain in nonfarm payroll employment over the past 12 months.
- **Illinois added 10,300 private sector jobs, or 0.2 percent**, on a seasonally adjusted basis during March. In the prior month, Illinois added 1,000 jobs. Illinois private sector payroll employment has increased in **7 of the past 12 months**.
- Nationally, private sector payroll jobs **rose by 209,000 jobs in March, or 0.2 percent**. Illinois is tied for 38th in the nation for percentage gain in private sector payroll employment over the past 12 months.

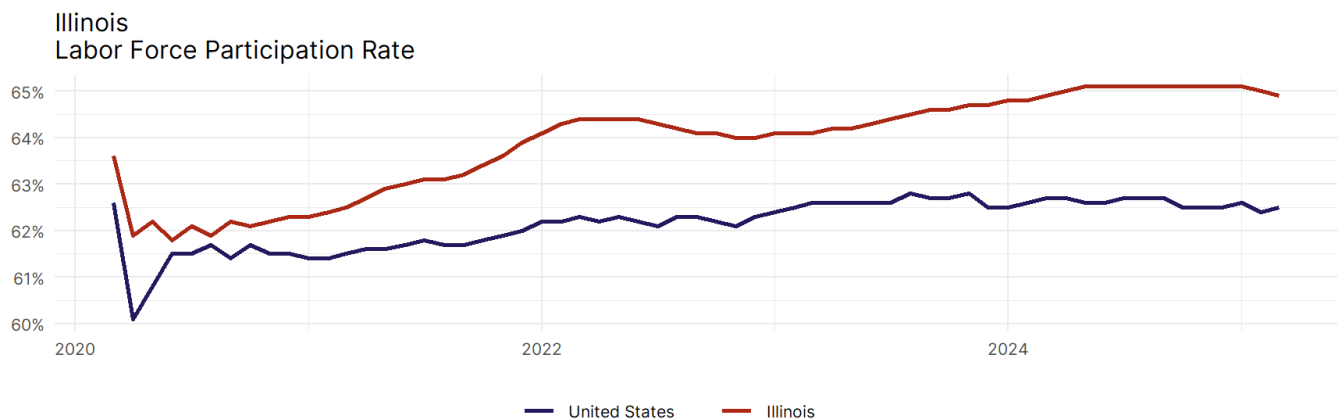


- The best performing sectors on a seasonally adjusted basis during March were **Government (4,500)** and **Trade, Transportation, and Utilities (2,600)**.
- The poorest performing sectors during the month were **Financial Activities (-300)** and **Information (-400)**.
- The best performing sectors during the last 12 months were **Government (20,900)** and **Education and Health Services (19,800)**.
- The poorest performing sectors during the last 12 months were **Manufacturing (-5,500)** and **Professional and Business Services (-12,900)**.

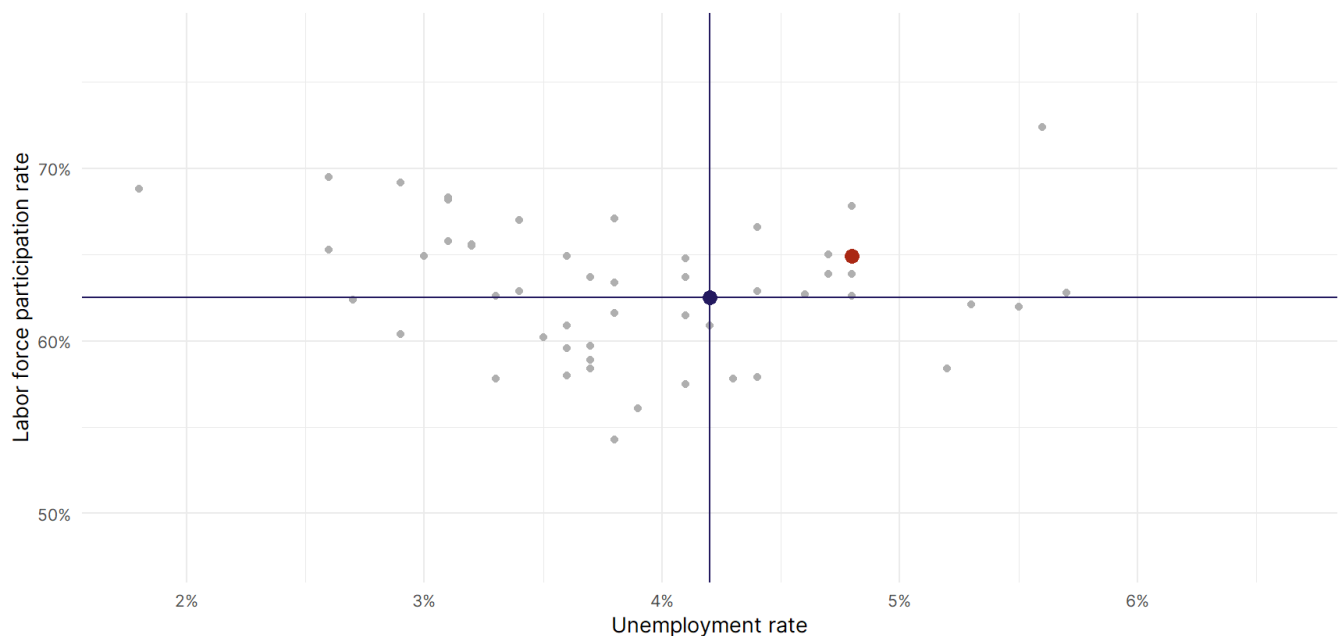
Illinois Labor Force

The labor force participation rate is the percentage of the civilian noninstitutionalized population age 16 and older who are employed or actively looking for work.

- The labor force participation rate in **Illinois fell to 64.9 percent in March from 65 percent in the prior month.**
- **Illinois is tied for 16th** in the nation.
- The 10-year high for the labor force participation rate in Illinois was **65.6 percent** occurring in April 2016, and the 10-year low was **61.8 percent** in June 2020.
- The national labor force participation rate **rose by 0.1 percentage points to 62.5 percent** in March.



Source: Bureau of Labor Statistics, data is seasonally adjusted



Source: Bureau of Labor Statistics, data is seasonally adjusted