



United States Congress

# Joint Economic Committee

Est. 1946

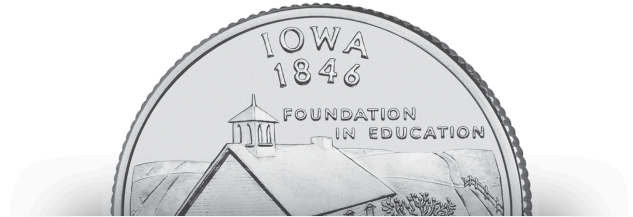
Republicans

Representative David Schweikert, *Chairman*



## Iowa

### Employment Update



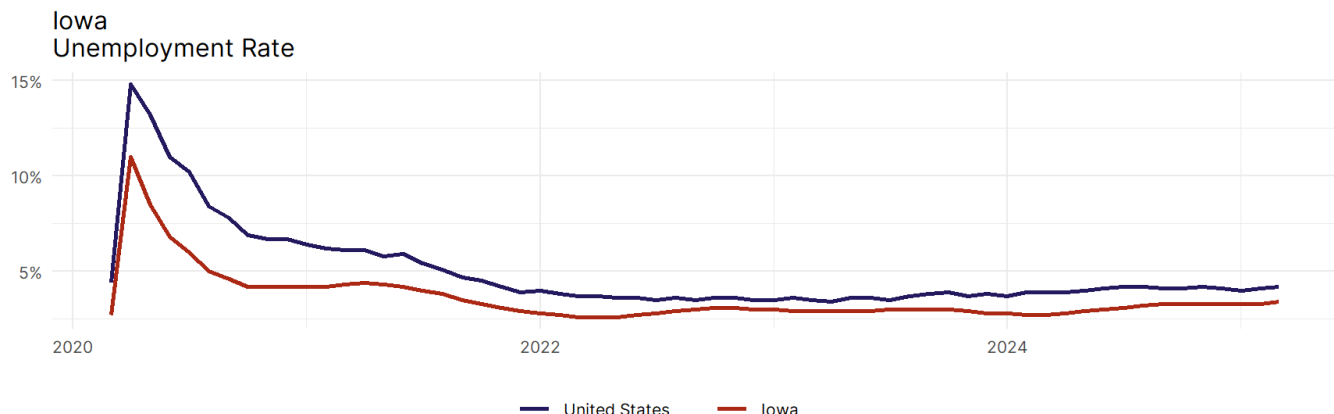
March 2025 | Released April 18, 2025

### United States Employment Snapshot

- In March, among the 50 states and the District of Columbia **unemployment fell in 15, rose in 17, and remained unchanged in 19.**
- The highest unemployment rate was 5.7 percent in **Nevada**, and the lowest was 1.8 percent in **South Dakota**. Nationally, the unemployment rate rose by 0.1 percentage point to 4.2 percent.
- In March, **payroll jobs rose in 38 states and fell in 12.** The largest payroll job percent increase was 0.5 percent in **Missouri**. The largest payroll job percent decline was 0.3 percent in **Connecticut**.

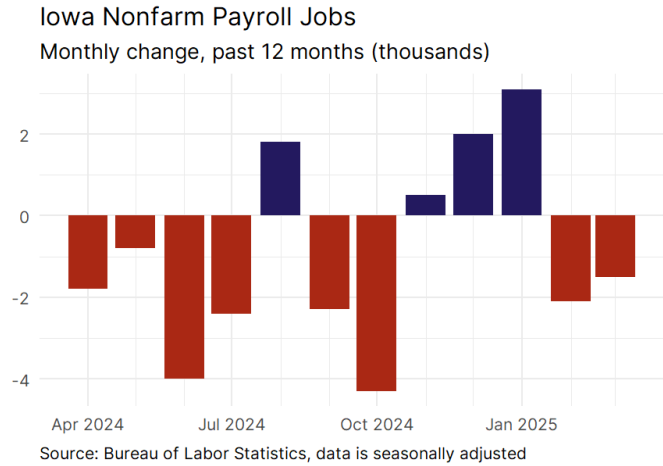
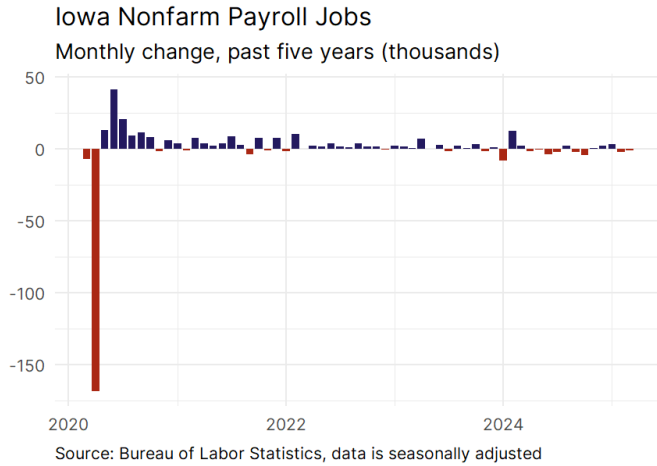
### Iowa Employment Snapshot

- In March, **Iowa lost 1,500 net payroll jobs** and the **unemployment rate rose by 0.1 percentage point to 3.4 percent.** In the prior month, Iowa lost 2,100 net payroll jobs.
- Over the past 12 months, **Iowa lost 11,800 net payroll jobs** and the **unemployment rate rose by 0.7 percentage points from 2.7 percent.**
- Nationally, nonfarm payrolls **rose by 228,000 in March, or 0.1 percent.** Iowa **ranks 51st** in the nation for percentage gain in nonfarm payroll employment over the past 12 months.
- In March, **Iowa's private sector lost 1,500 net private payroll jobs**, and over the past 12 months it lost 14,100 private payroll jobs. In the prior month, Iowa added 1,400 net private payroll jobs.
- In March, employment in Iowa **rose by 401**, and over the past 12 months it rose by 2,404.
- **Iowa's labor force participation rate remained steady at 67 percent** in March and **ranks 9th** in the nation. In the past 12 months, the labor force participation rate has remained unchanged.

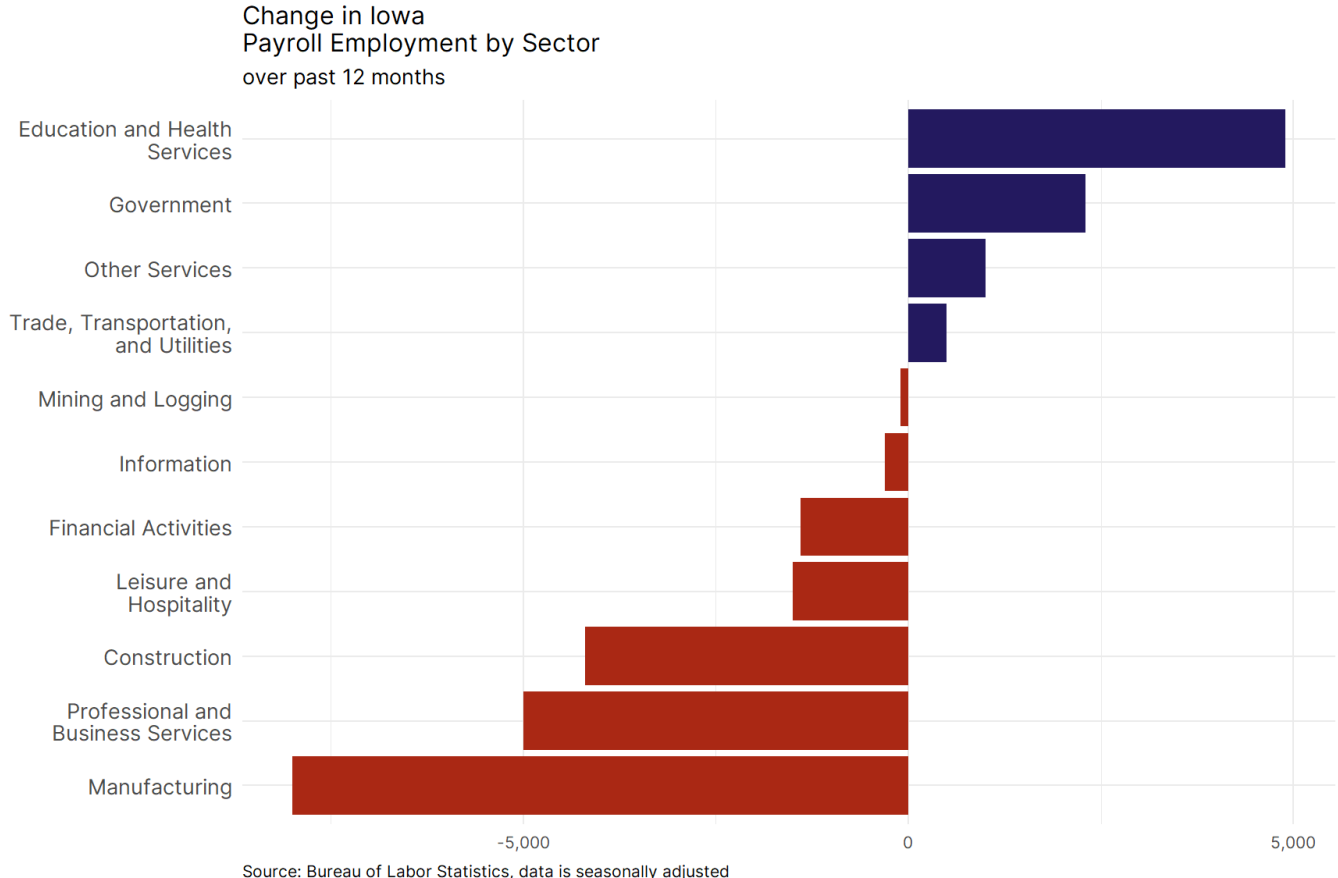


Source: Bureau of Labor Statistics, data is seasonally adjusted

## Iowa Payroll Employment



- **Iowa lost 1,500 net payroll jobs, or -0.1 percent**, on a seasonally adjusted basis during March. In the prior month, Iowa lost 2,100 jobs. Iowa nonfarm payroll employment has increased in **4 of the past 12 months**.
- Nationally, nonfarm payrolls **rose by 228,000 in March, or 0.1 percent**. Iowa ranks 51st in the nation for percentage gain in nonfarm payroll employment over the past 12 months.
- **Iowa lost 1,500 private sector jobs, or -0.1 percent**, on a seasonally adjusted basis during March. In the prior month, Iowa added 1,400 jobs. Iowa private sector payroll employment has increased in **3 of the past 12 months**.
- Nationally, private sector payroll jobs **rose by 209,000 jobs in March, or 0.2 percent**. Iowa ranks 51st in the nation for percentage gain in private sector payroll employment over the past 12 months.



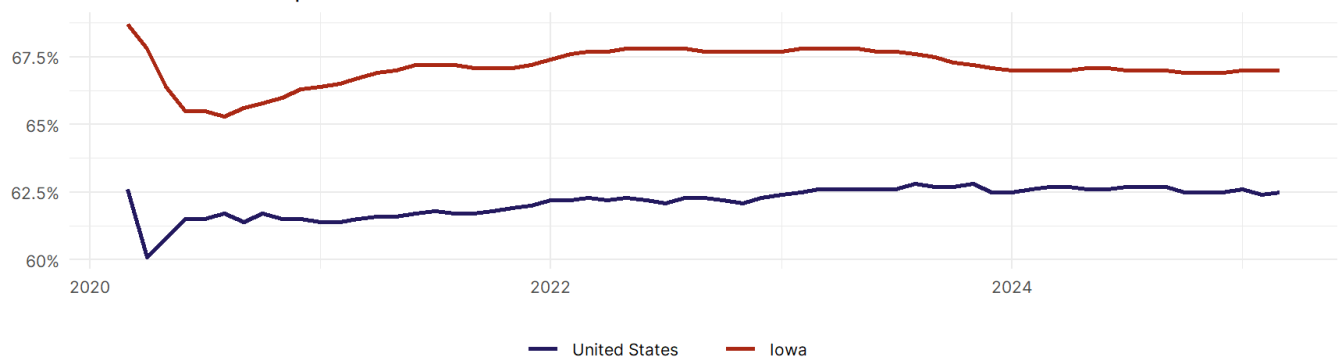
- The best performing sectors on a seasonally adjusted basis during March were **Trade, Transportation, and Utilities (700)** and **Construction (500)**.
- The poorest performing sectors during the month were **Leisure and Hospitality (-900)** and **Professional and Business Services (-2,000)**.
- The best performing sectors during the last 12 months were **Education and Health Services (4,900)** and **Government (2,300)**.
- The poorest performing sectors during the last 12 months were **Professional and Business Services (-5,000)** and **Manufacturing (-8,000)**.

### Iowa Labor Force

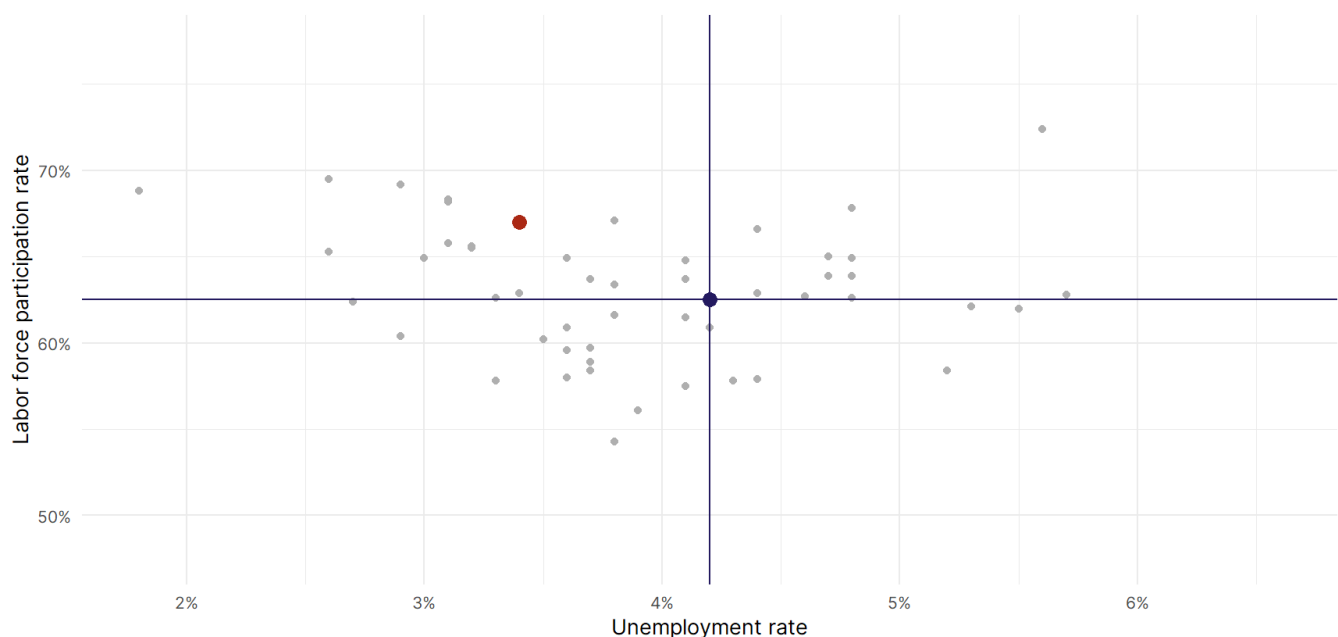
The labor force participation rate is the percentage of the civilian noninstitutionalized population age 16 and older who are employed or actively looking for work.

- The labor force participation rate in **Iowa remained unchanged at 67 percent in March**.
- **Iowa ranks 9th** in the nation.
- The 10-year high for the labor force participation rate in Iowa was **70.2 percent** occurring in September 2019, and the 10-year low was **65.3 percent** in August 2020.
- The national labor force participation rate **rose by 0.1 percentage points to 62.5 percent** in March.

Iowa  
Labor Force Participation Rate



Source: Bureau of Labor Statistics, data is seasonally adjusted



Source: Bureau of Labor Statistics, data is seasonally adjusted