



United States Congress

# Joint Economic Committee

Est. 1946

Republicans

Representative David Schweikert, *Chairman*



## Kansas

### Employment Update



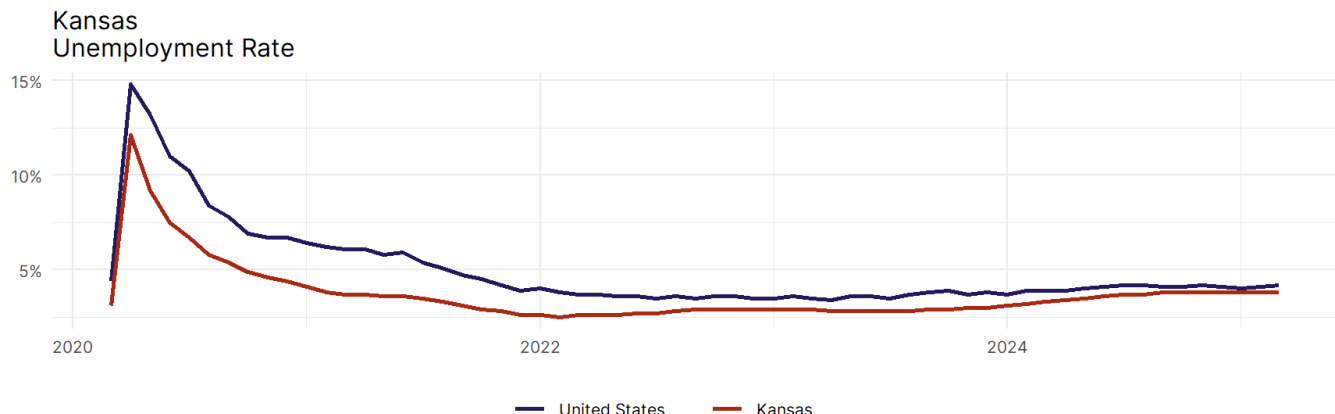
March 2025 | Released April 18, 2025

### United States Employment Snapshot

- In March, among the 50 states and the District of Columbia **unemployment fell in 15, rose in 17, and remained unchanged in 19.**
- The highest unemployment rate was 5.7 percent in **Nevada**, and the lowest was 1.8 percent in **South Dakota**. Nationally, the unemployment rate rose by 0.1 percentage point to 4.2 percent.
- In March, **payroll jobs rose in 38 states and fell in 12.** The largest payroll job percent increase was 0.5 percent in **Missouri**. The largest payroll job percent decline was 0.3 percent in **Connecticut**.

### Kansas Employment Snapshot

- In March, **Kansas added 900 net payroll jobs** and the **unemployment rate remained unchanged at 3.8 percent.** In the prior month, Kansas added 1,300 net payroll jobs.
- Over the past 12 months, **Kansas added 2,700 net payroll jobs** and the **unemployment rate rose by 0.5 percentage points from 3.3 percent.**
- Nationally, nonfarm payrolls **rose by 228,000 in March, or 0.1 percent.** Kansas **is tied for 44th** in the nation for percentage gain in nonfarm payroll employment over the past 12 months.
- In March, **Kansas's private sector added 600 net private payroll jobs**, and over the past 12 months it lost 700 private payroll jobs. In the prior month, Kansas lost 100 net private payroll jobs.
- In March, employment in Kansas **fell by 1,265**, and over the past 12 months it rose by 11,093.
- **Kansas's labor force participation rate fell to 67.1 percent** in March from 67.2 percent and **ranks 8th** in the nation. In the past 12 months, the labor force participation rate has risen by 0.2 percentage points.

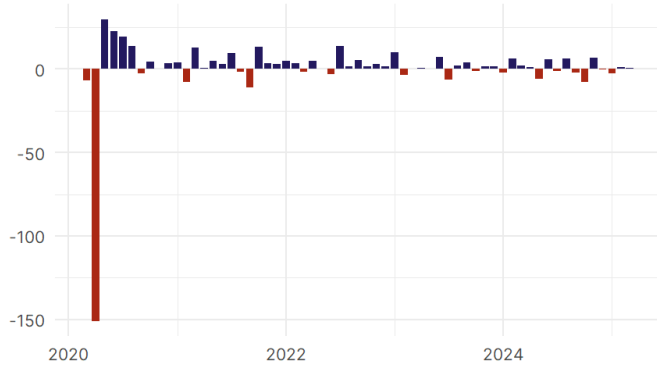


Source: Bureau of Labor Statistics, data is seasonally adjusted

## Kansas Payroll Employment

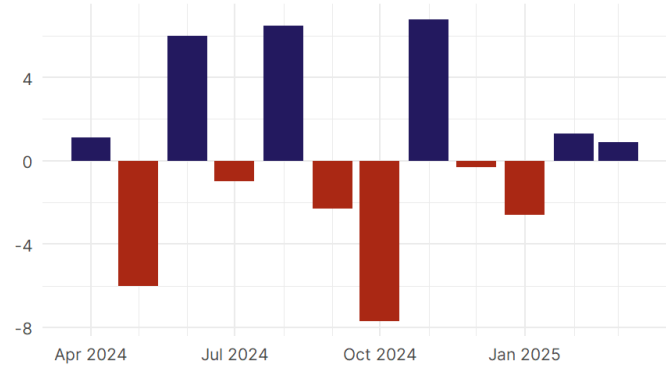
### Kansas Nonfarm Payroll Jobs

Monthly change, past five years (thousands)



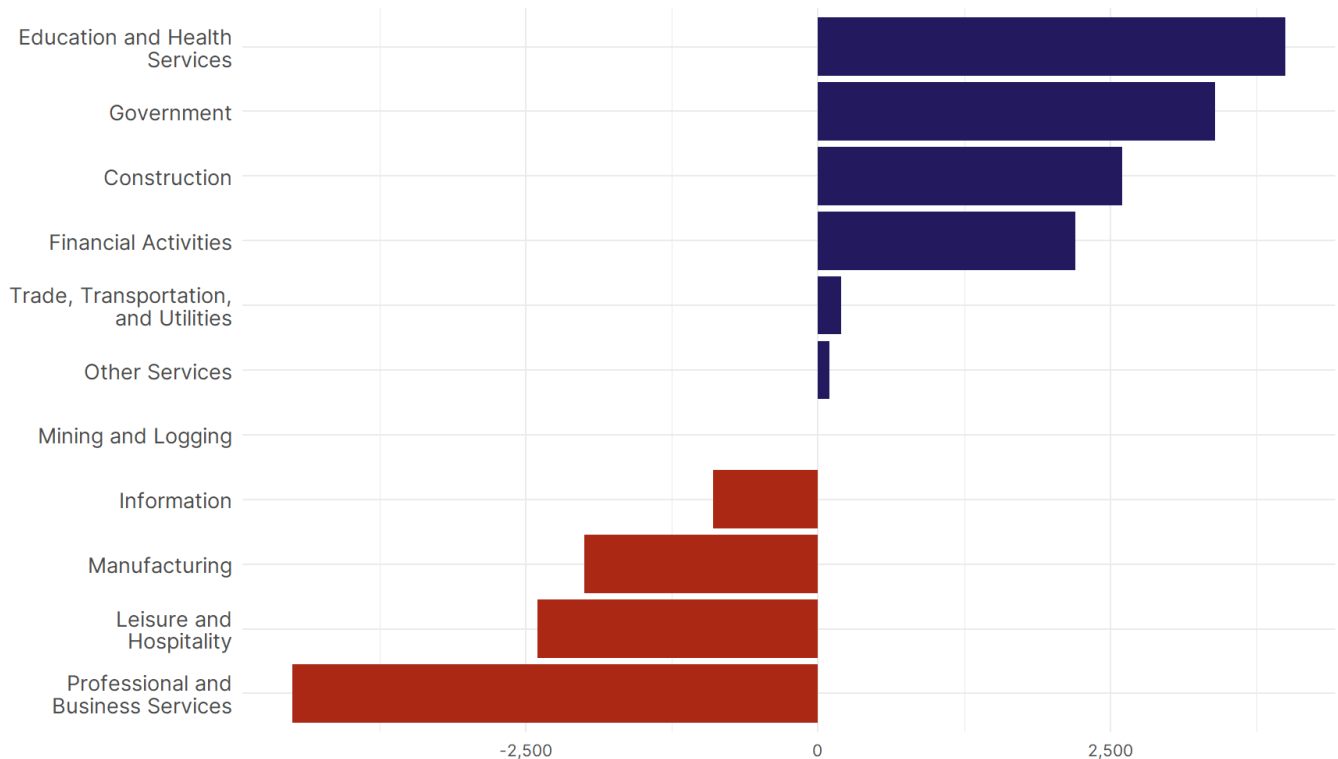
### Kansas Nonfarm Payroll Jobs

Monthly change, past 12 months (thousands)



- **Kansas added 900 net payroll jobs, or 0.1 percent,** on a seasonally adjusted basis during March. In the prior month, Kansas added 1,300 jobs. Kansas nonfarm payroll employment has increased in **6 of the past 12 months**.
- Nationally, nonfarm payrolls **rose by 228,000 in March, or 0.1 percent**. Kansas is tied for 44th in the nation for percentage gain in nonfarm payroll employment over the past 12 months.
- **Kansas added 600 private sector jobs, or 0.1 percent,** on a seasonally adjusted basis during March. In the prior month, Kansas lost 100 jobs. Kansas private sector payroll employment has increased in **6 of the past 12 months**.
- Nationally, private sector payroll jobs **rose by 209,000 jobs in March, or 0.2 percent**. Kansas is tied for 46th in the nation for percentage gain in private sector payroll employment over the past 12 months.

### Change in Kansas Payroll Employment by Sector over past 12 months



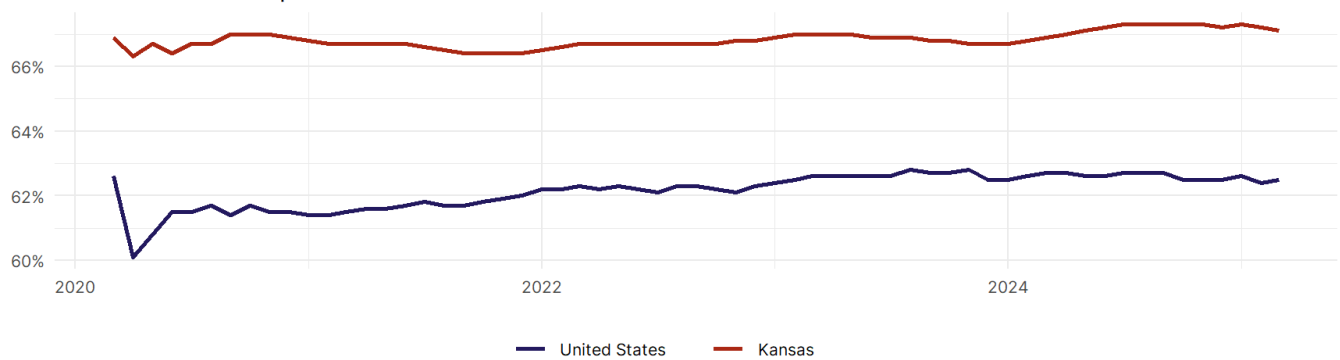
- The best performing sectors on a seasonally adjusted basis during March were **Leisure and Hospitality (1,100)** and **Financial Activities (400)**.
- The poorest performing sectors during the month were **Education and Health Services (-300)** and **Trade, Transportation, and Utilities (-1,000)**.
- The best performing sectors during the last 12 months were **Education and Health Services (4,000)** and **Government (3,400)**.
- The poorest performing sectors during the last 12 months were **Leisure and Hospitality (-2,400)** and **Professional and Business Services (-4,500)**.

### Kansas Labor Force

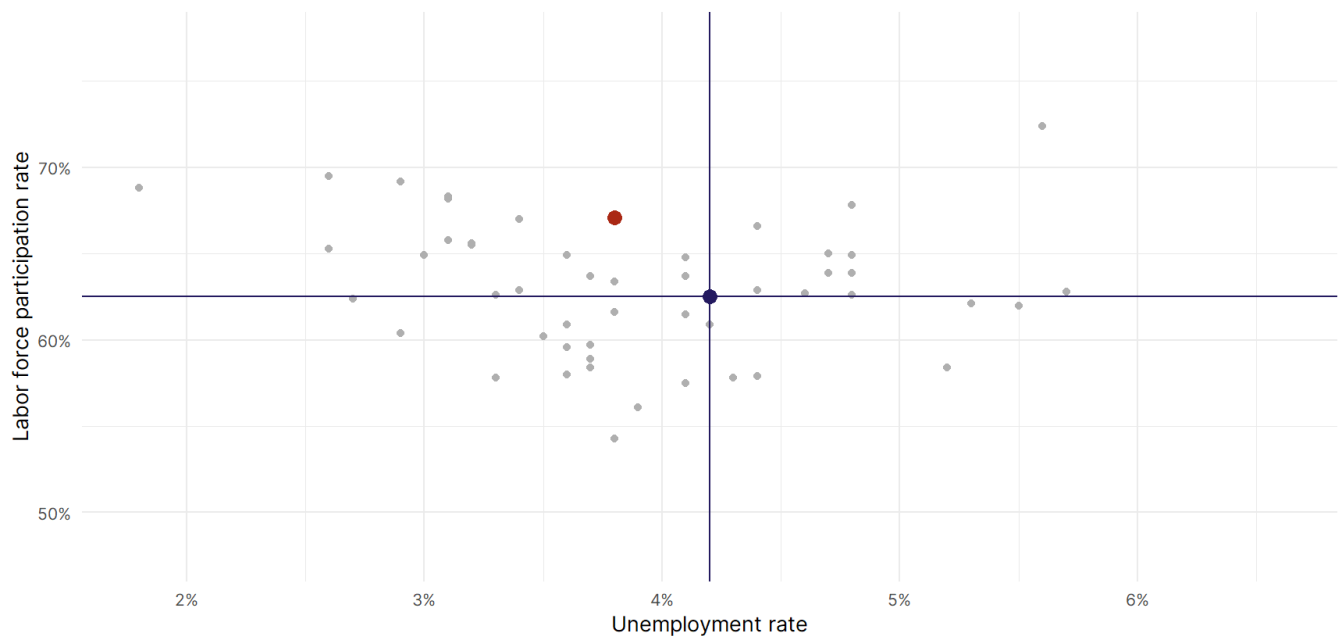
The labor force participation rate is the percentage of the civilian noninstitutionalized population age 16 and older who are employed or actively looking for work.

- The labor force participation rate in **Kansas fell to 67.1 percent in March from 67.2 percent in the prior month**.
- **Kansas ranks 8th** in the nation.
- The 10-year high for the labor force participation rate in Kansas was **67.9 percent** in March 2015, and the 10-year low was **66.3 percent** in April 2020.
- The national labor force participation rate **rose by 0.1 percentage points to 62.5 percent** in March.

Kansas  
Labor Force Participation Rate



Source: Bureau of Labor Statistics, data is seasonally adjusted



Source: Bureau of Labor Statistics, data is seasonally adjusted