



United States Congress

Joint Economic Committee

Est. 1946

Republicans

Representative David Schweikert, *Chairman*



Kentucky Employment Update



March 2025 | Released April 18, 2025

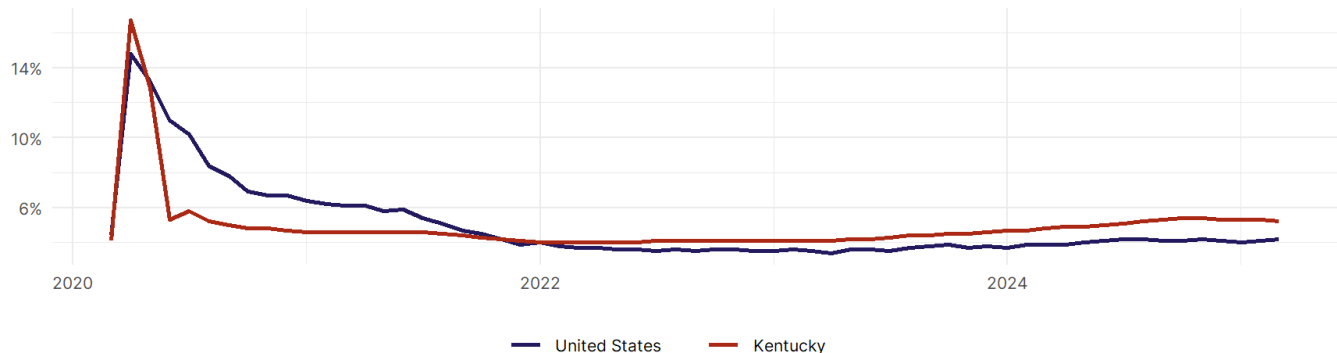
United States Employment Snapshot

- In March, among the 50 states and the District of Columbia **unemployment fell in 15, rose in 17, and remained unchanged in 19.**
- The highest unemployment rate was 5.7 percent in **Nevada**, and the lowest was 1.8 percent in **South Dakota**. Nationally, the unemployment rate rose by 0.1 percentage point to 4.2 percent.
- In March, **payroll jobs rose in 38 states and fell in 12.** The largest payroll job percent increase was 0.5 percent in **Missouri**. The largest payroll job percent decline was 0.3 percent in **Connecticut**.

Kentucky Employment Snapshot

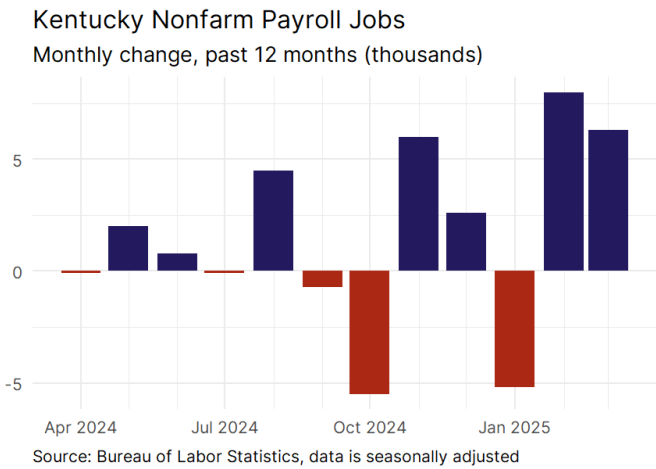
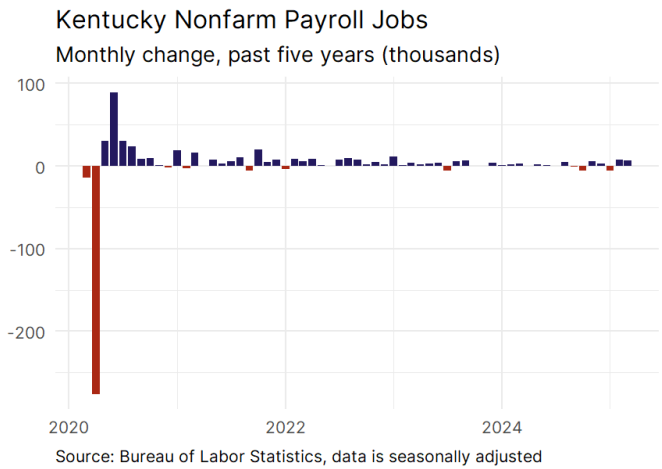
- In March, **Kentucky added 6,300 net payroll jobs** and the **unemployment rate fell by 0.1 percentage point to 5.2 percent.** In the prior month, Kentucky added 8,000 net payroll jobs.
- Over the past 12 months, **Kentucky added 18,600 net payroll jobs** and the **unemployment rate rose by 0.4 percentage points from 4.8 percent.**
- Nationally, nonfarm payrolls **rose by 228,000 in March, or 0.1 percent.** Kentucky **is tied for 21st** in the nation for percentage gain in nonfarm payroll employment over the past 12 months.
- In March, **Kentucky's private sector added 6,300 net private payroll jobs**, and over the past 12 months it added 14,500 private payroll jobs. In the prior month, Kentucky added 5,700 net private payroll jobs.
- In March, employment in Kentucky **rose by 3,111**, and over the past 12 months it rose by 26,215.
- **Kentucky's labor force participation rate remained steady at 58.4 percent** in March and **is tied for 43rd** in the nation. In the past 12 months, the labor force participation rate has risen by 0.5 percentage points.

Kentucky
Unemployment Rate

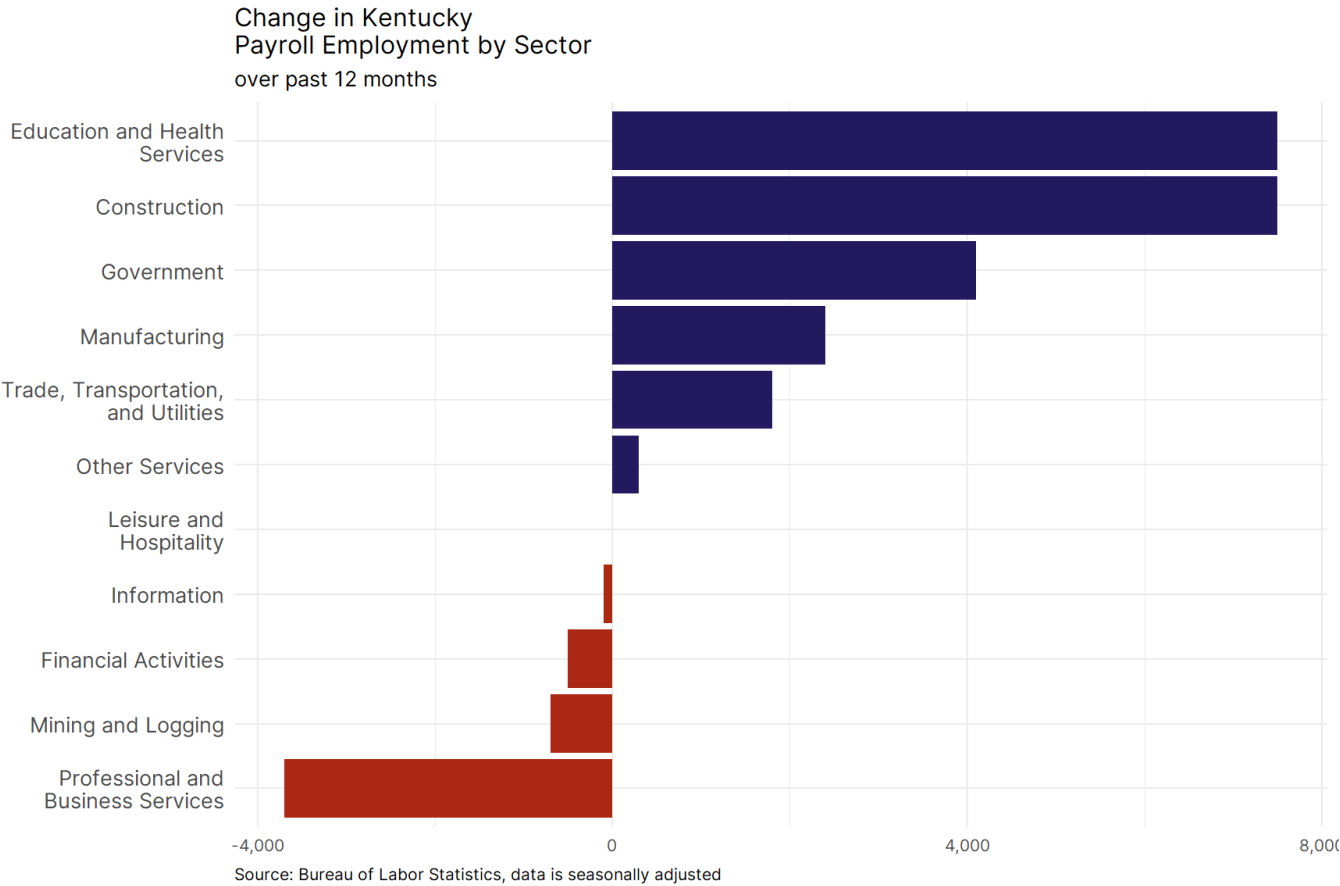


Source: Bureau of Labor Statistics, data is seasonally adjusted

Kentucky Payroll Employment



- **Kentucky added 6,300 net payroll jobs, or 0.3 percent,** on a seasonally adjusted basis during March. In the prior month, Kentucky added 8,000 jobs. Kentucky nonfarm payroll employment has increased in **7 of the past 12 months**.
- Nationally, nonfarm payrolls **rose by 228,000 in March, or 0.1 percent**. Kentucky is tied for 21st in the nation for percentage gain in nonfarm payroll employment over the past 12 months.
- **Kentucky added 6,300 private sector jobs, or 0.4 percent,** on a seasonally adjusted basis during March. In the prior month, Kentucky added 5,700 jobs. Kentucky private sector payroll employment has increased in **8 of the past 12 months**.
- Nationally, private sector payroll jobs **rose by 209,000 jobs in March, or 0.2 percent**. Kentucky is tied for 23rd in the nation for percentage gain in private sector payroll employment over the past 12 months.



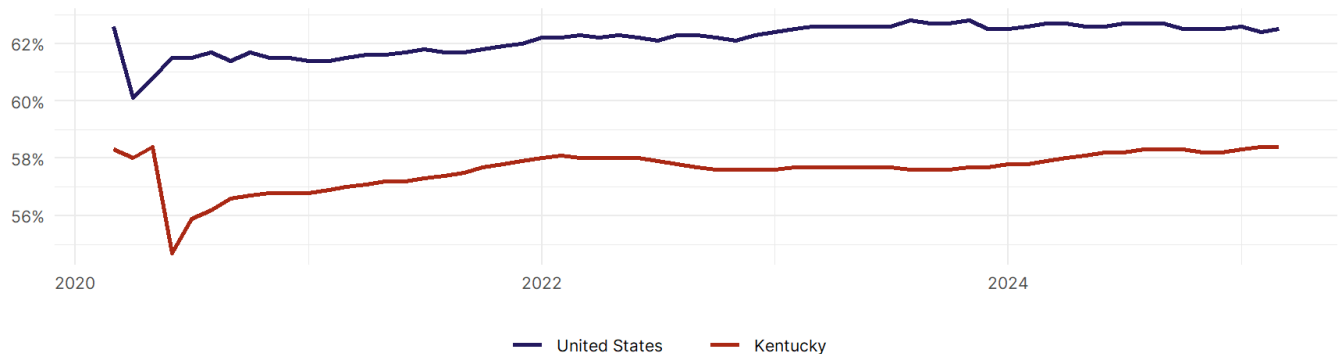
- The best performing sectors on a seasonally adjusted basis during March were **Construction (3,500)** and **Manufacturing (2,600)**.
- The poorest performing sectors during the month were **Other Services (-300)** and **Professional and Business Services (-1,900)**.
- The best performing sectors during the last 12 months were **Construction tied with Education and Health Services (7,500)** and **Government (4,100)**.
- The poorest performing sectors during the last 12 months were **Mining and Logging (-700)** and **Professional and Business Services (-3,700)**.

Kentucky Labor Force

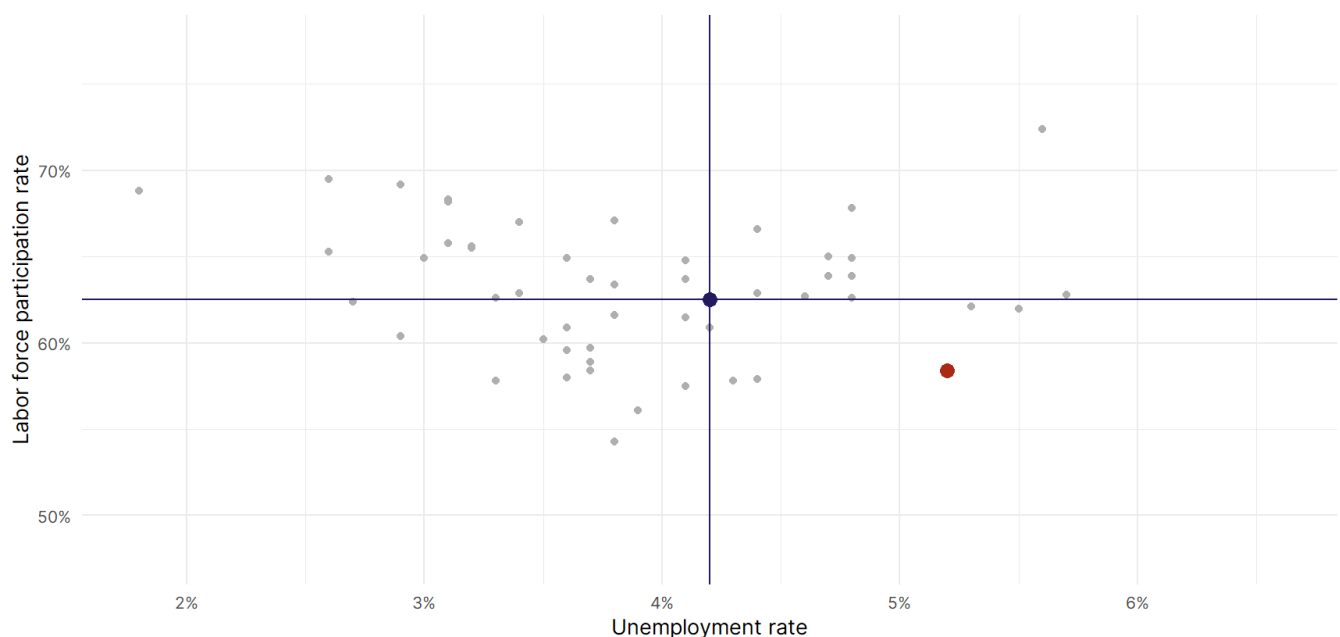
The labor force participation rate is the percentage of the civilian noninstitutionalized population age 16 and older who are employed or actively looking for work.

- The labor force participation rate in **Kentucky remained unchanged at 58.4 percent in March**.
- **Kentucky is tied for 43rd** in the nation.
- The 10-year high for the labor force participation rate in Kentucky was **59.1 percent** occurring in November 2019, and the 10-year low was **54.7 percent** in June 2020.
- The national labor force participation rate **rose by 0.1 percentage points to 62.5 percent** in March.

Kentucky
Labor Force Participation Rate



Source: Bureau of Labor Statistics, data is seasonally adjusted



Source: Bureau of Labor Statistics, data is seasonally adjusted