



United States Congress

Joint Economic Committee

Est. 1946

Republicans

Representative David Schweikert, *Chairman*



Louisiana Employment Update



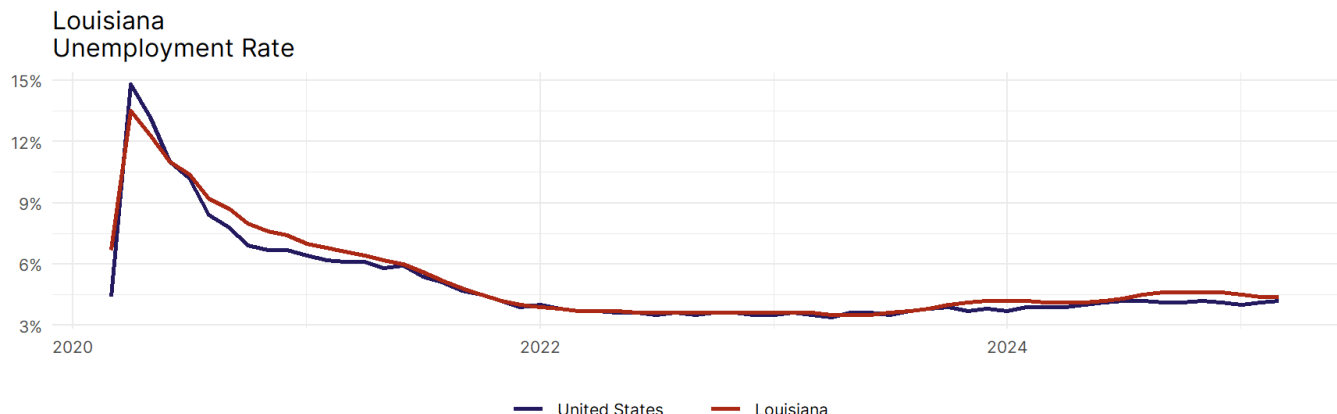
March 2025 | Released April 18, 2025

United States Employment Snapshot

- In March, among the 50 states and the District of Columbia **unemployment fell in 15, rose in 17, and remained unchanged in 19.**
- The highest unemployment rate was 5.7 percent in **Nevada**, and the lowest was 1.8 percent in **South Dakota**. Nationally, the unemployment rate rose by 0.1 percentage point to 4.2 percent.
- In March, **payroll jobs rose in 38 states and fell in 12.** The largest payroll job percent increase was 0.5 percent in **Missouri**. The largest payroll job percent decline was 0.3 percent in **Connecticut**.

Louisiana Employment Snapshot

- In March, **Louisiana added 1,400 net payroll jobs** and the **unemployment rate remained unchanged at 4.4 percent.** In the prior month, Louisiana added 5,400 net payroll jobs.
- Over the past 12 months, **Louisiana added 20,300 net payroll jobs** and the **unemployment rate rose by 0.3 percentage points from 4.1 percent.**
- Nationally, nonfarm payrolls **rose by 228,000 in March, or 0.1 percent.** Louisiana **is tied for 19th** in the nation for percentage gain in nonfarm payroll employment over the past 12 months.
- In March, **Louisiana's private sector added 2,900 net private payroll jobs**, and over the past 12 months it added 18,700 private payroll jobs. In the prior month, Louisiana added 5,000 net private payroll jobs.
- In March, employment in Louisiana **fell by 1,617**, and over the past 12 months it fell by 11,209.
- **Louisiana's labor force participation rate fell to 57.9 percent** in March from 58 percent and **ranks 46th** in the nation. In the past 12 months, the labor force participation rate has fallen by 0.4 percentage points.

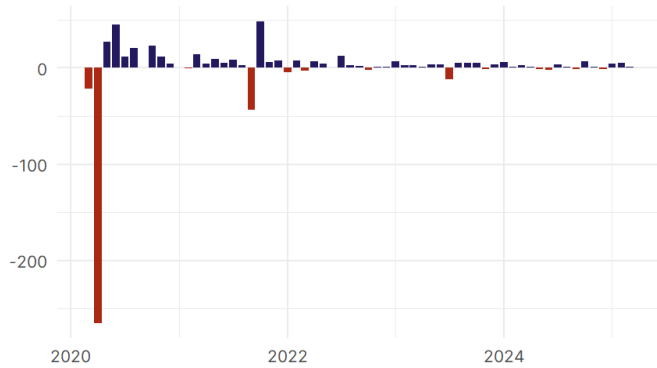


Source: Bureau of Labor Statistics, data is seasonally adjusted

Louisiana Payroll Employment

Louisiana Nonfarm Payroll Jobs

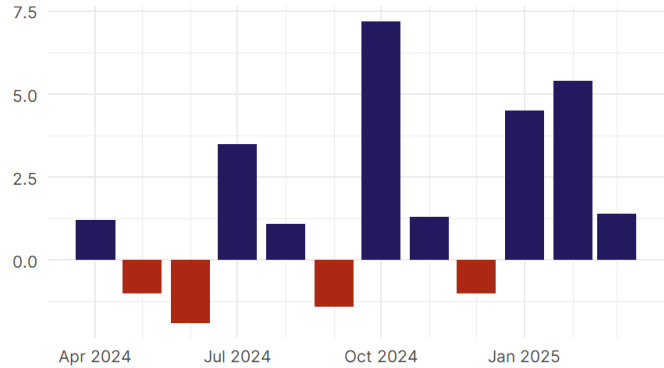
Monthly change, past five years (thousands)



Source: Bureau of Labor Statistics, data is seasonally adjusted

Louisiana Nonfarm Payroll Jobs

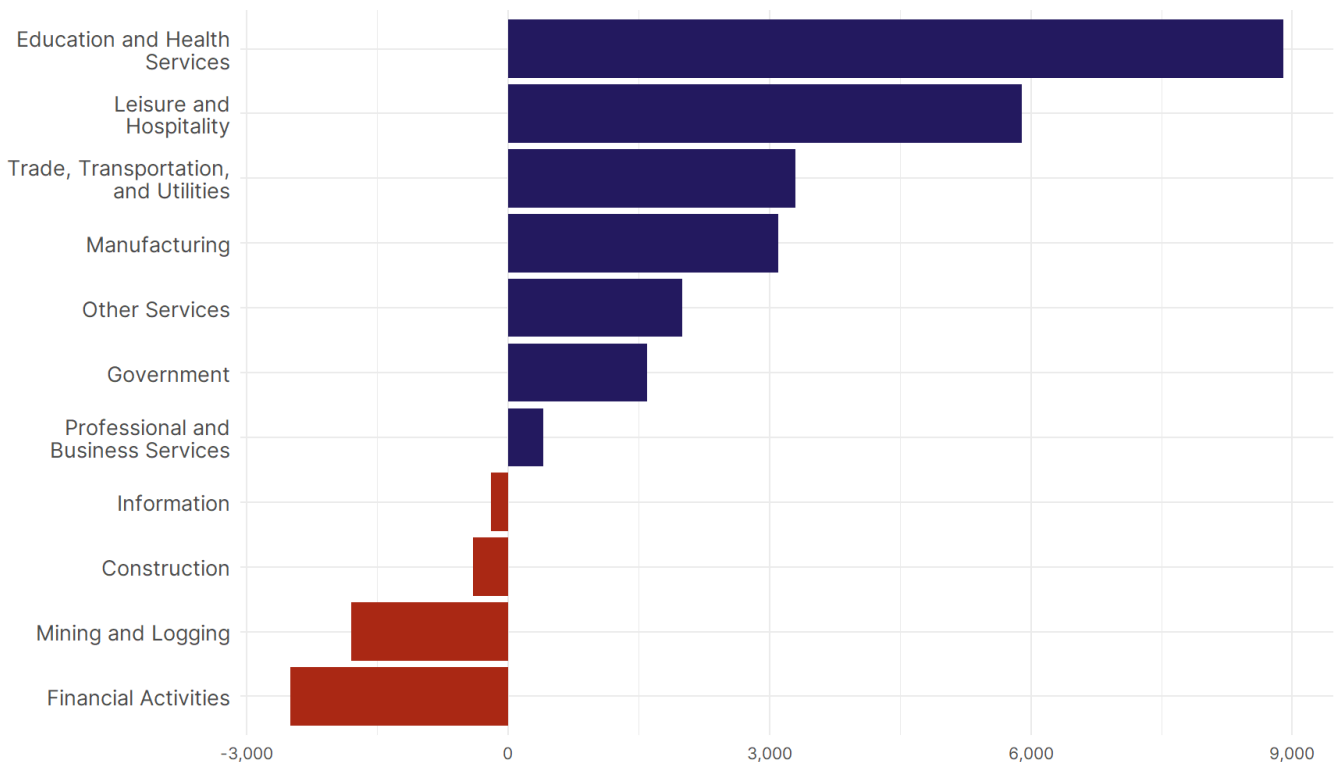
Monthly change, past 12 months (thousands)



Source: Bureau of Labor Statistics, data is seasonally adjusted

- **Louisiana added 1,400 net payroll jobs, or 0.1 percent,** on a seasonally adjusted basis during March. In the prior month, Louisiana added 5,400 jobs. Louisiana nonfarm payroll employment has increased in **8 of the past 12 months**.
- Nationally, nonfarm payrolls **rose by 228,000 in March, or 0.1 percent**. Louisiana is tied for 19th in the nation for percentage gain in nonfarm payroll employment over the past 12 months.
- **Louisiana added 2,900 private sector jobs, or 0.2 percent,** on a seasonally adjusted basis during March. In the prior month, Louisiana added 5,000 jobs. Louisiana private sector payroll employment has increased in **8 of the past 12 months**.
- Nationally, private sector payroll jobs **rose by 209,000 jobs in March, or 0.2 percent**. Louisiana is tied for 13th in the nation for percentage gain in private sector payroll employment over the past 12 months.

Change in Louisiana Payroll Employment by Sector over past 12 months



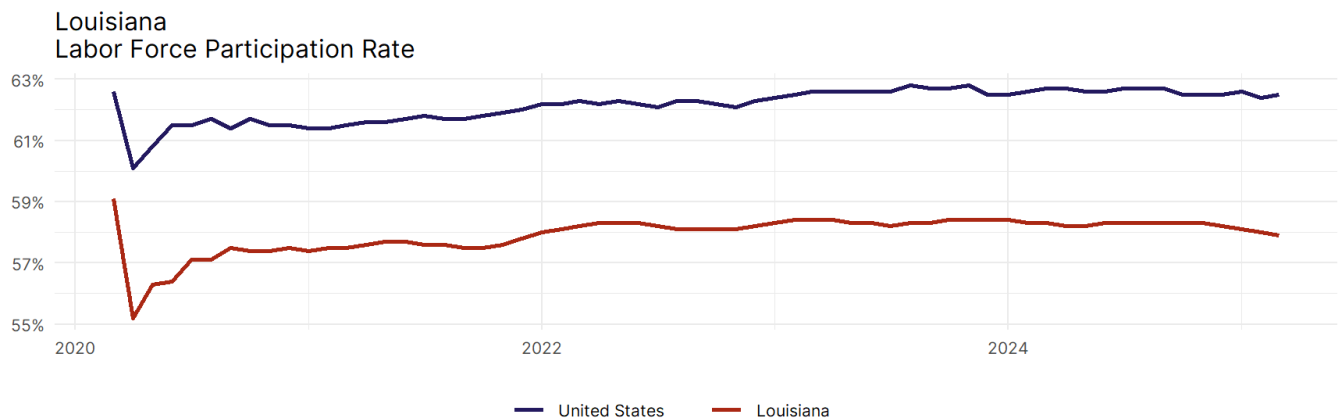
Source: Bureau of Labor Statistics, data is seasonally adjusted

- The best performing sectors on a seasonally adjusted basis during March were **Leisure and Hospitality (2,400)** and **Education and Health Services (1,900)**.
- The poorest performing sectors during the month were **Professional and Business Services (-1,300)** and **Government (-1,500)**.
- The best performing sectors during the last 12 months were **Education and Health Services (8,900)** and **Leisure and Hospitality (5,900)**.
- The poorest performing sectors during the last 12 months were **Mining and Logging (-1,800)** and **Financial Activities (-2,500)**.

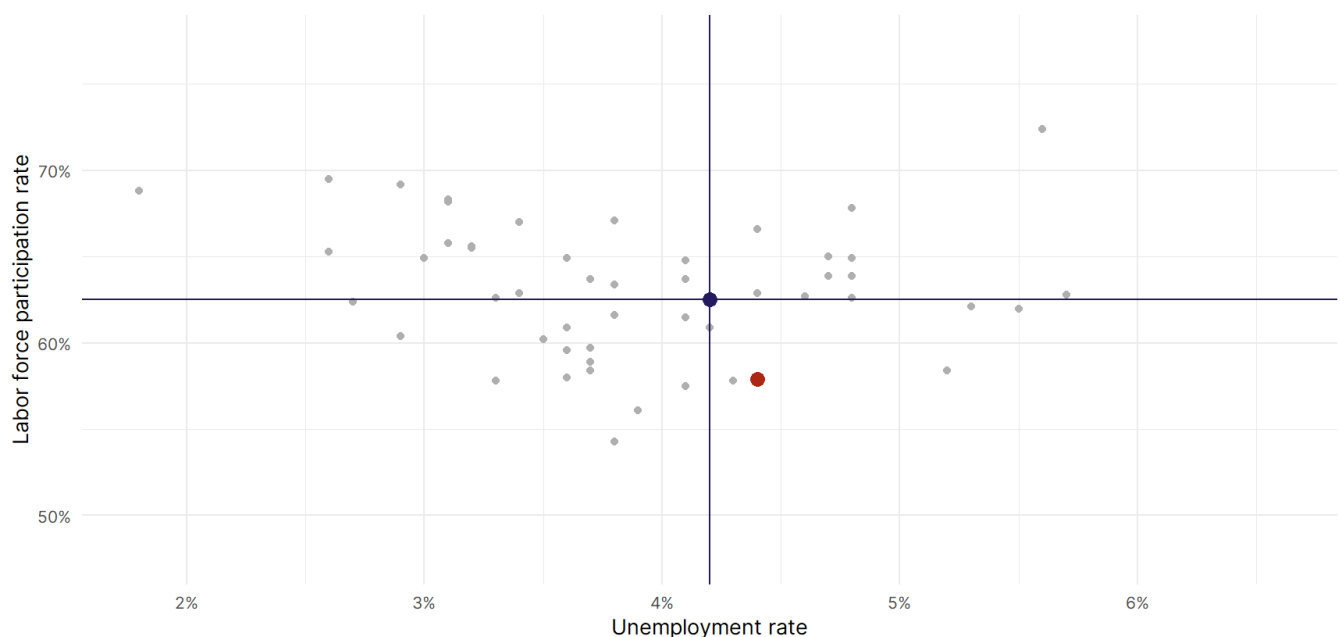
Louisiana Labor Force

The labor force participation rate is the percentage of the civilian noninstitutionalized population age 16 and older who are employed or actively looking for work.

- The labor force participation rate in **Louisiana fell to 57.9 percent in March from 58 percent in the prior month.**
- **Louisiana ranks 46th** in the nation.
- The 10-year high for the labor force participation rate in Louisiana was **60.8 percent** in March 2015, and the 10-year low was **55.2 percent** in April 2020.
- The national labor force participation rate **rose by 0.1 percentage points to 62.5 percent** in March.



Source: Bureau of Labor Statistics, data is seasonally adjusted



Source: Bureau of Labor Statistics, data is seasonally adjusted