



United States Congress

Joint Economic Committee

Est. 1946

Republicans

Representative David Schweikert, *Chairman*



Massachusetts Employment Update



March 2025 | Released April 18, 2025

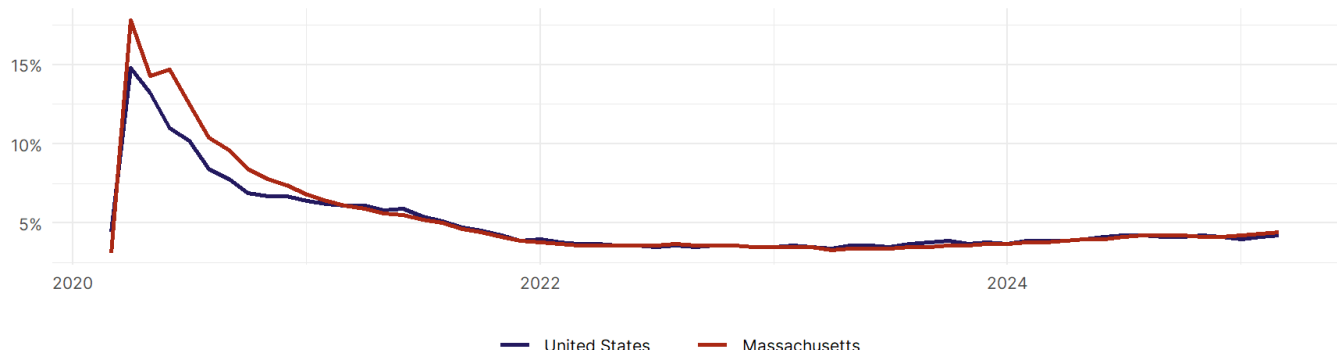
United States Employment Snapshot

- In March, among the 50 states and the District of Columbia **unemployment fell in 15, rose in 17, and remained unchanged in 19.**
- The highest unemployment rate was 5.7 percent in **Nevada**, and the lowest was 1.8 percent in **South Dakota**. Nationally, the unemployment rate rose by 0.1 percentage point to 4.2 percent.
- In March, **payroll jobs rose in 38 states and fell in 12.** The largest payroll job percent increase was 0.5 percent in **Missouri**. The largest payroll job percent decline was 0.3 percent in **Connecticut**.

Massachusetts Employment Snapshot

- In March, **Massachusetts added 4,400 net payroll jobs** and the **unemployment rate rose by 0.1 percentage point to 4.4 percent.** In the prior month, Massachusetts lost 4,600 net payroll jobs.
- Over the past 12 months, **Massachusetts lost 11,100 net payroll jobs** and the **unemployment rate rose by 0.6 percentage points from 3.8 percent.**
- Nationally, nonfarm payrolls **rose by 228,000 in March, or 0.1 percent.** Massachusetts **is tied for 48th** in the nation for percentage gain in nonfarm payroll employment over the past 12 months.
- In March, **Massachusetts's private sector added 3,900 net private payroll jobs**, and over the past 12 months it lost 12,100 private payroll jobs. In the prior month, Massachusetts lost 4,100 net private payroll jobs.
- In March, employment in Massachusetts **fell by 1,645**, and over the past 12 months it rose by 29,265.
- **Massachusetts's labor force participation rate rose to 66.6 percent** in March from 66.5 percent and **ranks 10th** in the nation. In the past 12 months, the labor force participation rate has risen by 0.4 percentage points.

Massachusetts
Unemployment Rate

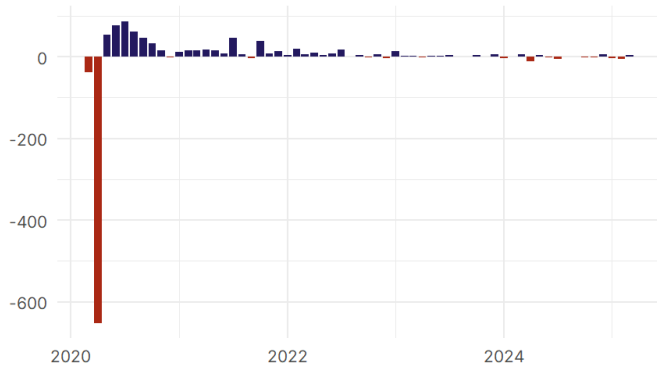


Source: Bureau of Labor Statistics, data is seasonally adjusted

Massachusetts Payroll Employment

Massachusetts Nonfarm Payroll Jobs

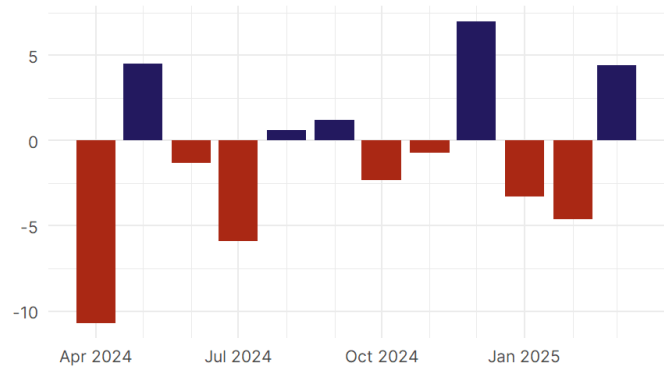
Monthly change, past five years (thousands)



Source: Bureau of Labor Statistics, data is seasonally adjusted

Massachusetts Nonfarm Payroll Jobs

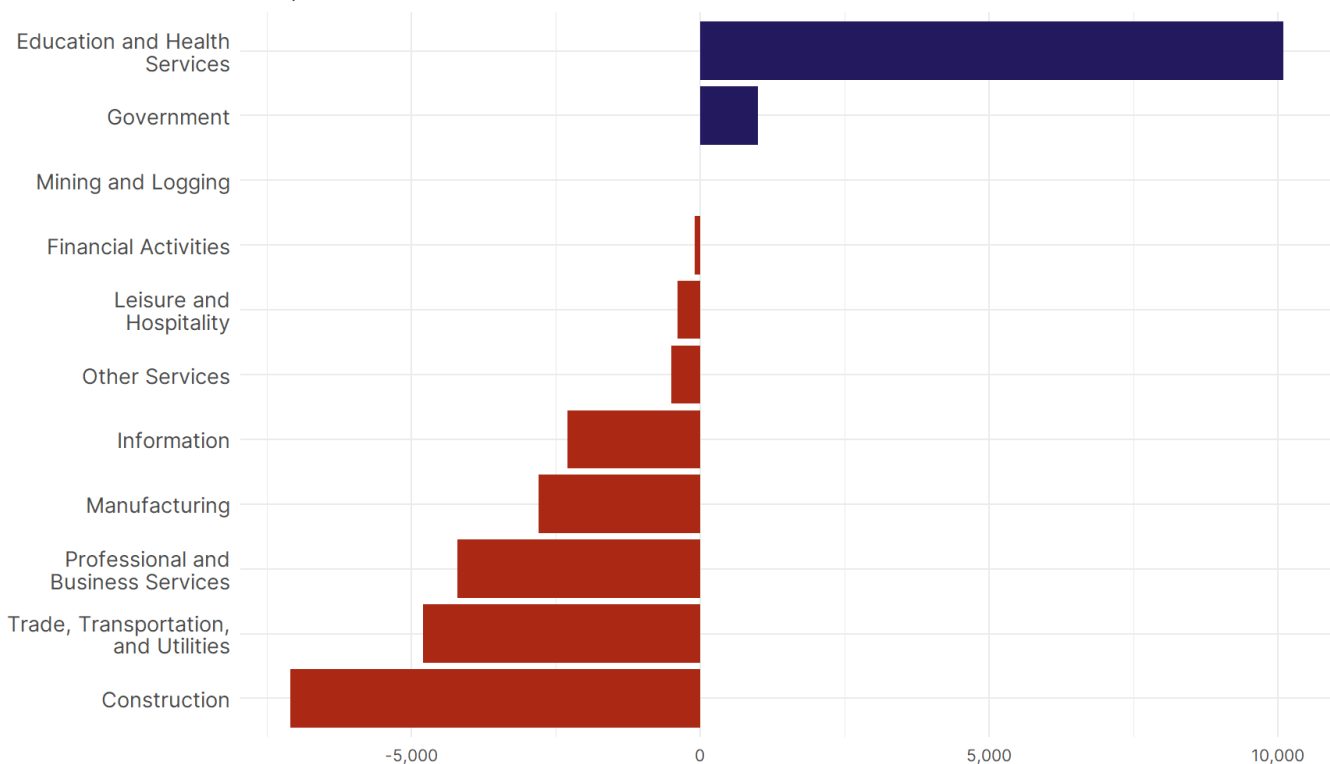
Monthly change, past 12 months (thousands)



Source: Bureau of Labor Statistics, data is seasonally adjusted

- **Massachusetts added 4,400 net payroll jobs, or 0.1 percent,** on a seasonally adjusted basis during March. In the prior month, Massachusetts lost 4,600 jobs. Massachusetts nonfarm payroll employment has increased in **5 of the past 12 months**.
- Nationally, nonfarm payrolls **rose by 228,000 in March, or 0.1 percent**. Massachusetts is tied for 48th in the nation for percentage gain in nonfarm payroll employment over the past 12 months.
- **Massachusetts added 3,900 private sector jobs, or 0.1 percent,** on a seasonally adjusted basis during March. In the prior month, Massachusetts lost 4,100 jobs. Massachusetts private sector payroll employment has increased in **4 of the past 12 months**.
- Nationally, private sector payroll jobs **rose by 209,000 jobs in March, or 0.2 percent**. Massachusetts is tied for 48th in the nation for percentage gain in private sector payroll employment over the past 12 months.

Change in Massachusetts Payroll Employment by Sector over past 12 months



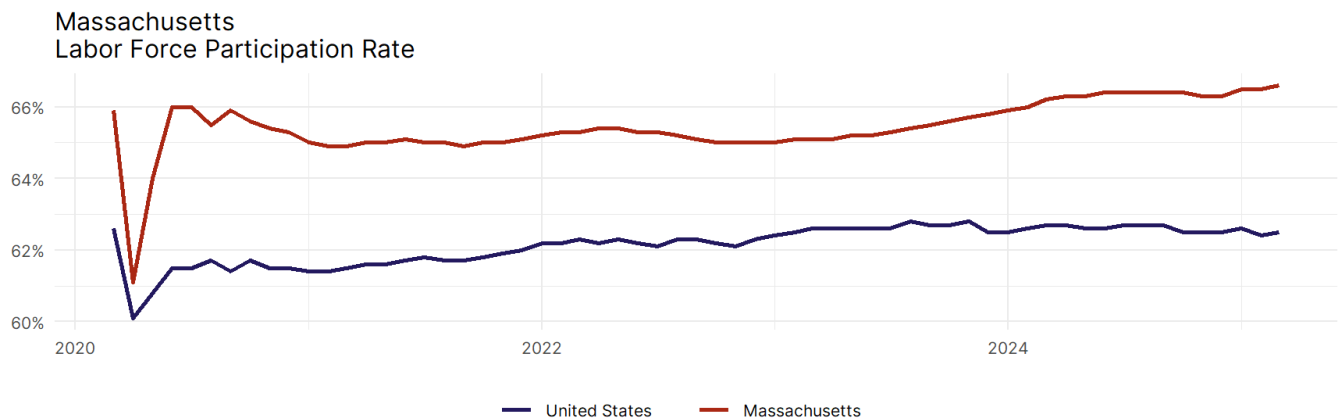
Source: Bureau of Labor Statistics, data is seasonally adjusted

- The best performing sectors on a seasonally adjusted basis during March were **Professional and Business Services (2,900)** and **Education and Health Services (1,700)**.
- The poorest performing sectors during the month were **Leisure and Hospitality (-300)** and **Construction (-2,200)**.
- The best performing sectors during the last 12 months were **Education and Health Services (10,100)** and **Government (1,000)**.
- The poorest performing sectors during the last 12 months were **Trade, Transportation, and Utilities (-4,800)** and **Construction (-7,100)**.

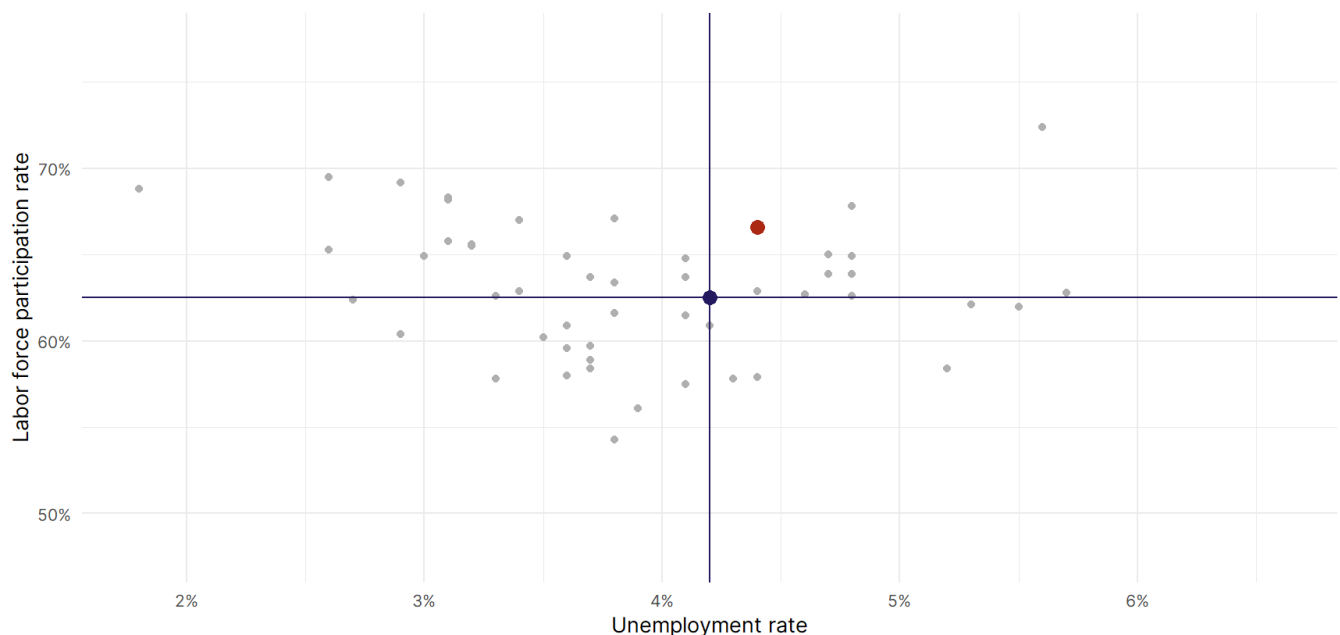
Massachusetts Labor Force

The labor force participation rate is the percentage of the civilian noninstitutionalized population age 16 and older who are employed or actively looking for work.

- The labor force participation rate in **Massachusetts rose to 66.6 percent in March from 66.5 percent in the prior month.**
- **Massachusetts ranks 10th** in the nation.
- The 10-year high for the labor force participation rate in Massachusetts was **67.4 percent** occurring in January 2019, and the 10-year low was **61.1 percent** in April 2020.
- The national labor force participation rate **rose by 0.1 percentage points to 62.5 percent** in March.



Source: Bureau of Labor Statistics, data is seasonally adjusted



Source: Bureau of Labor Statistics, data is seasonally adjusted