



United States Congress

# Joint Economic Committee

Est. 1946

Republicans

Representative David Schweikert, *Chairman*



## Minnesota Employment Update



March 2025 | Released April 18, 2025

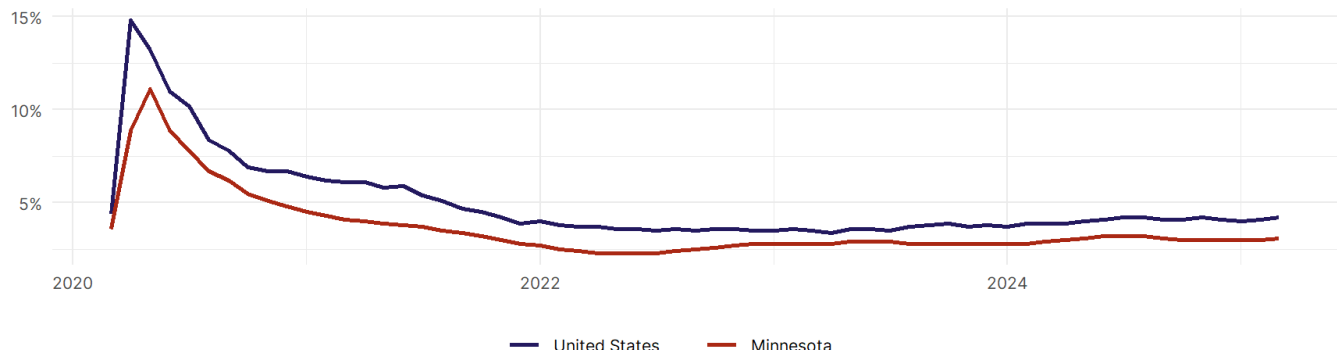
### United States Employment Snapshot

- In March, among the 50 states and the District of Columbia **unemployment fell in 15, rose in 17, and remained unchanged in 19.**
- The highest unemployment rate was 5.7 percent in **Nevada**, and the lowest was 1.8 percent in **South Dakota**. Nationally, the unemployment rate rose by 0.1 percentage point to 4.2 percent.
- In March, **payroll jobs rose in 38 states and fell in 12.** The largest payroll job percent increase was 0.5 percent in **Missouri**. The largest payroll job percent decline was 0.3 percent in **Connecticut**.

### Minnesota Employment Snapshot

- In March, **Minnesota added 10,700 net payroll jobs** and the **unemployment rate rose by 0.1 percentage point to 3.1 percent.** In the prior month, Minnesota added 800 net payroll jobs.
- Over the past 12 months, **Minnesota added 36,600 net payroll jobs** and the **unemployment rate rose by 0.2 percentage points from 2.9 percent.**
- Nationally, nonfarm payrolls **rose by 228,000 in March, or 0.1 percent.** Minnesota **is tied for 12th** in the nation for percentage gain in nonfarm payroll employment over the past 12 months.
- In March, **Minnesota's private sector added 9,200 net private payroll jobs**, and over the past 12 months it added 27,000 private payroll jobs. In the prior month, Minnesota added 1,000 net private payroll jobs.
- In March, employment in Minnesota **fell by 504**, and over the past 12 months it rose by 24,804.
- **Minnesota's labor force participation rate rose to 68.2 percent** in March from 68.1 percent and **ranks 6th** in the nation. In the past 12 months, the labor force participation rate has risen by 0.1 percentage points.

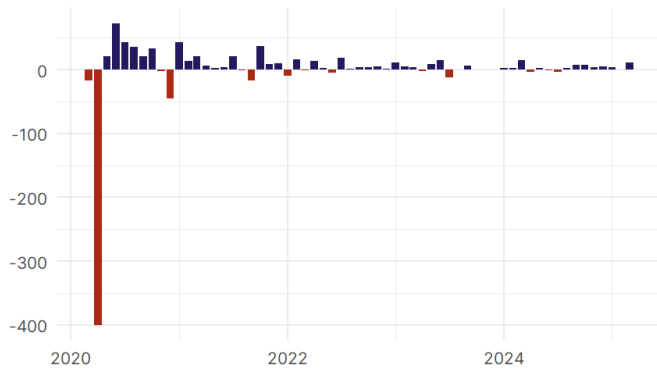
Minnesota  
Unemployment Rate



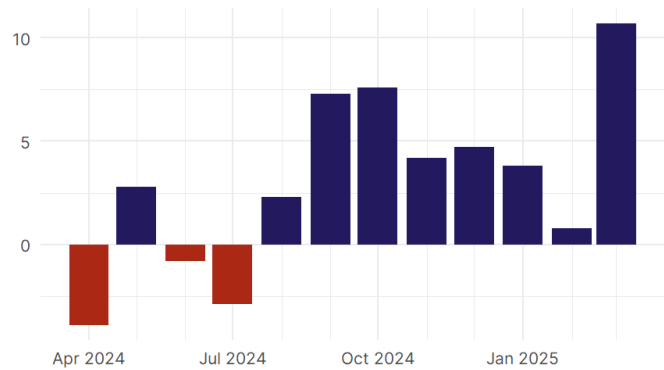
Source: Bureau of Labor Statistics, data is seasonally adjusted

## Minnesota Payroll Employment

Minnesota Nonfarm Payroll Jobs  
Monthly change, past five years (thousands)

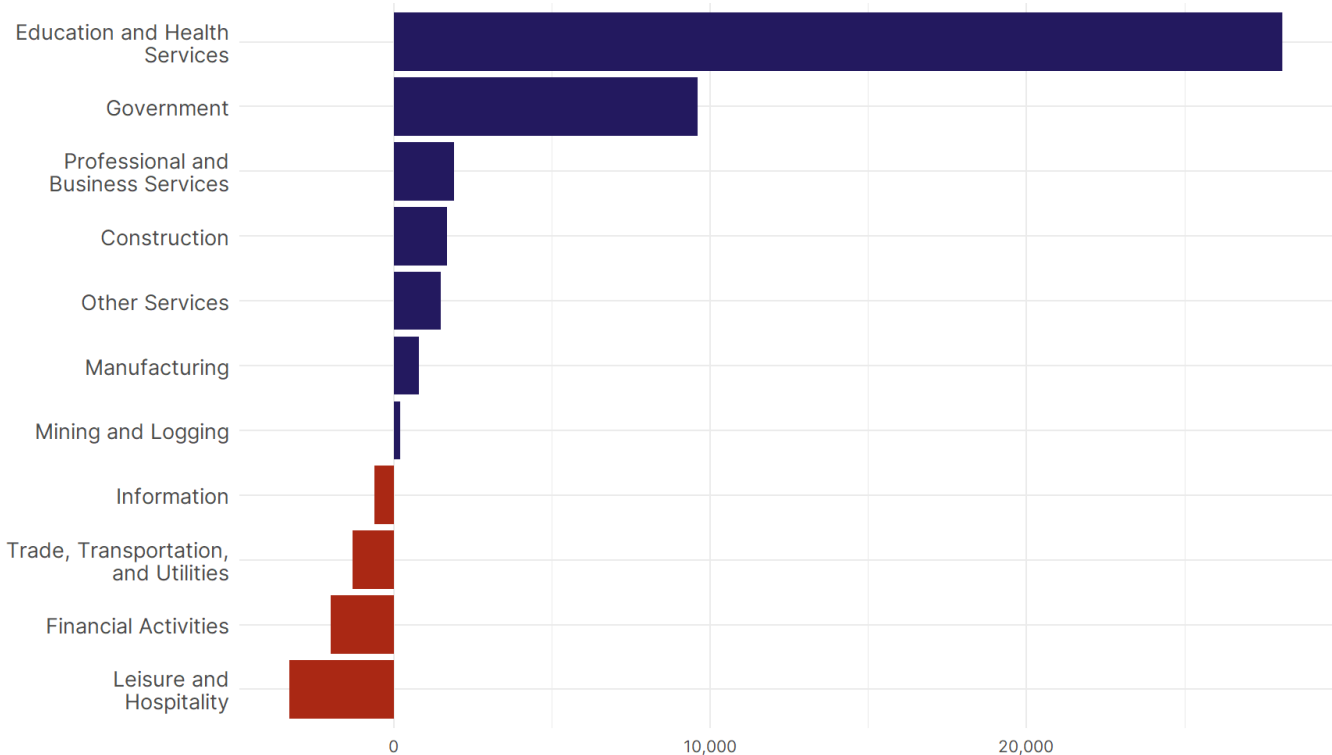


Minnesota Nonfarm Payroll Jobs  
Monthly change, past 12 months (thousands)



- **Minnesota added 10,700 net payroll jobs, or 0.4 percent,** on a seasonally adjusted basis during March. In the prior month, Minnesota added 800 jobs. Minnesota nonfarm payroll employment has increased in **9 of the past 12 months**.
- Nationally, nonfarm payrolls **rose by 228,000 in March, or 0.1 percent**. Minnesota is tied for 12th in the nation for percentage gain in nonfarm payroll employment over the past 12 months.
- **Minnesota added 9,200 private sector jobs, or 0.4 percent,** on a seasonally adjusted basis during March. In the prior month, Minnesota added 1,000 jobs. Minnesota private sector payroll employment has increased in **8 of the past 12 months**.
- Nationally, private sector payroll jobs **rose by 209,000 jobs in March, or 0.2 percent**. Minnesota ranks 18th in the nation for percentage gain in private sector payroll employment over the past 12 months.

Change in Minnesota  
Payroll Employment by Sector  
over past 12 months



Source: Bureau of Labor Statistics, data is seasonally adjusted

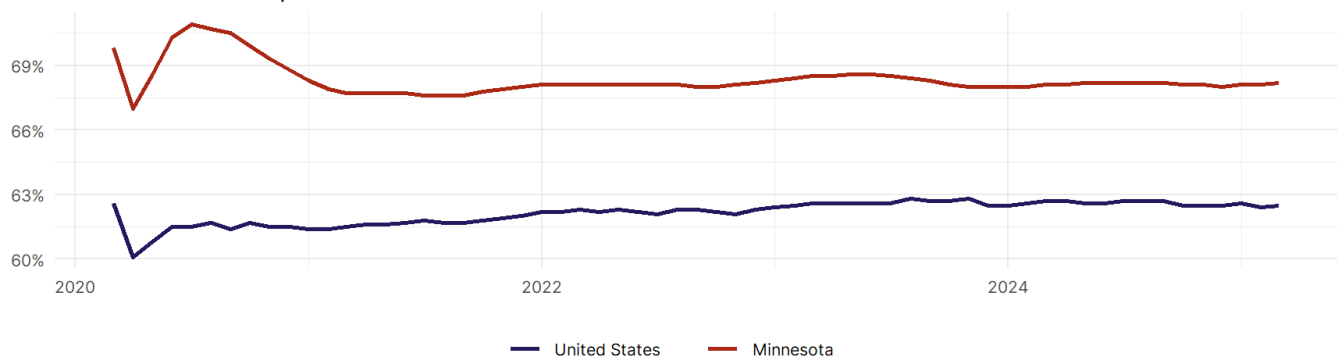
- The best performing sectors on a seasonally adjusted basis during March were **Education and Health Services (3,600)** and **Construction (1,900)**.
- The poorest performing sectors during the month were **Financial Activities (-200)** and **Other Services (-700)**.
- The best performing sectors during the last 12 months were **Education and Health Services (28,100)** and **Government (9,600)**.
- The poorest performing sectors during the last 12 months were **Financial Activities (-2,000)** and **Leisure and Hospitality (-3,300)**.

### Minnesota Labor Force

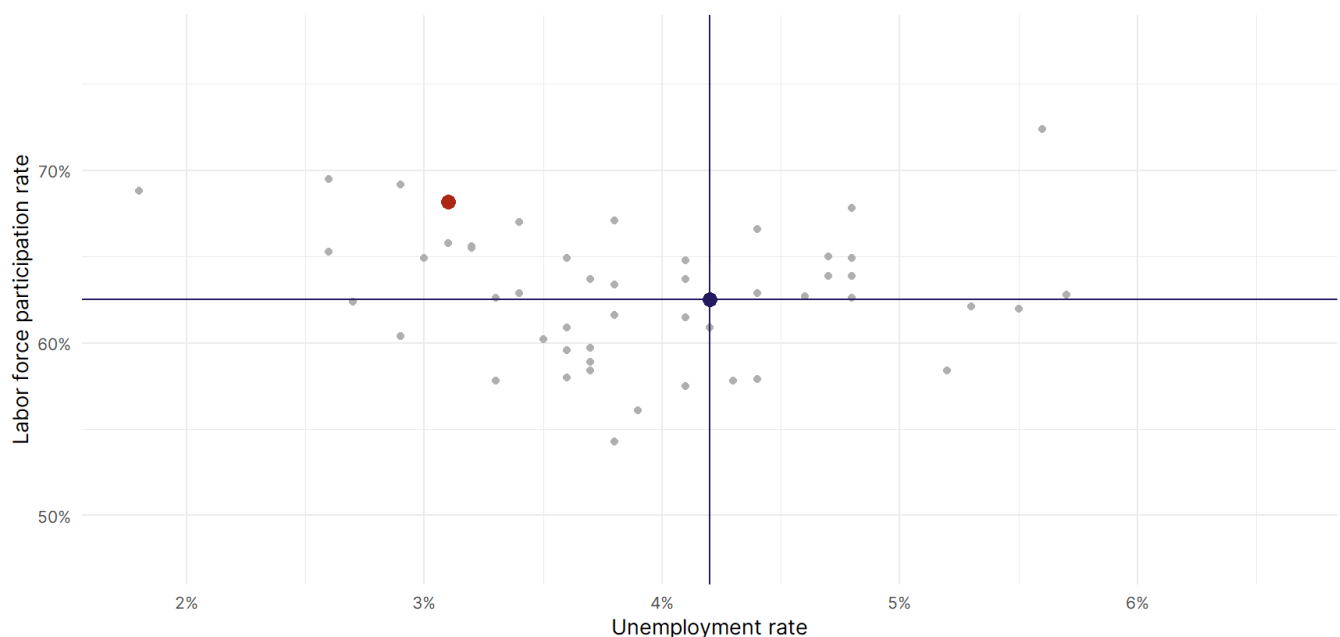
The labor force participation rate is the percentage of the civilian noninstitutionalized population age 16 and older who are employed or actively looking for work.

- The labor force participation rate in **Minnesota rose to 68.2 percent in March from 68.1 percent in the prior month.**
- **Minnesota ranks 6th** in the nation.
- The 10-year high for the labor force participation rate in Minnesota was **70.9 percent** in July 2020, and the 10-year low was **67 percent** in April 2020.
- The national labor force participation rate **rose by 0.1 percentage points to 62.5 percent** in March.

Minnesota  
Labor Force Participation Rate



Source: Bureau of Labor Statistics, data is seasonally adjusted



Source: Bureau of Labor Statistics, data is seasonally adjusted