



United States Congress

Joint Economic Committee

Est. 1946

Republicans

Representative David Schweikert, *Chairman*



Missouri Employment Update



March 2025 | Released April 18, 2025

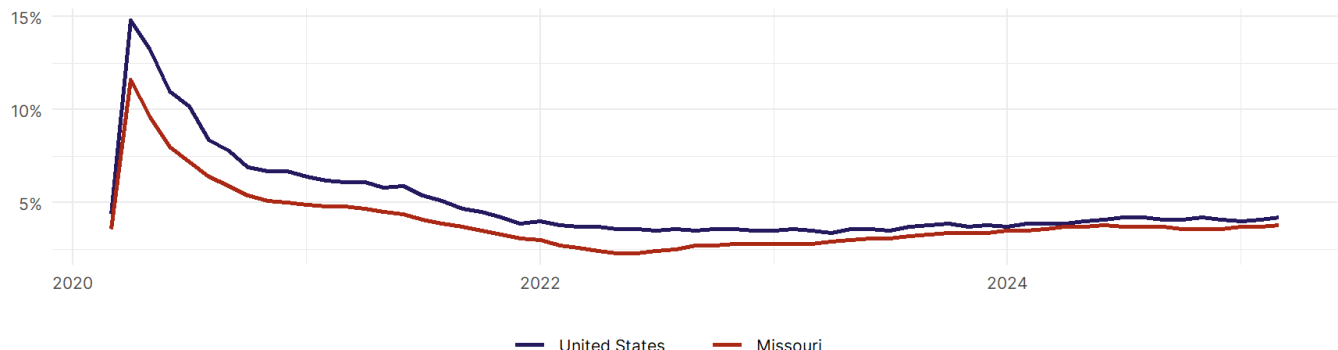
United States Employment Snapshot

- In March, among the 50 states and the District of Columbia **unemployment fell in 15, rose in 17, and remained unchanged in 19.**
- The highest unemployment rate was 5.7 percent in **Nevada**, and the lowest was 1.8 percent in **South Dakota**. Nationally, the unemployment rate rose by 0.1 percentage point to 4.2 percent.
- In March, **payroll jobs rose in 38 states and fell in 12.** The largest payroll job percent increase was 0.5 percent in **Missouri**. The largest payroll job percent decline was 0.3 percent in **Connecticut**.

Missouri Employment Snapshot

- In March, **Missouri added 13,900 net payroll jobs** and the **unemployment rate rose by 0.1 percentage point to 3.8 percent.** In the prior month, Missouri added 11,000 net payroll jobs.
- Over the past 12 months, **Missouri added 20,200 net payroll jobs** and the **unemployment rate rose by 0.2 percentage points from 3.6 percent.**
- Nationally, nonfarm payrolls **rose by 228,000 in March, or 0.1 percent.** Missouri is **tied for 29th** in the nation for percentage gain in nonfarm payroll employment over the past 12 months.
- In March, **Missouri's private sector added 12,600 net private payroll jobs**, and over the past 12 months it added 12,700 private payroll jobs. In the prior month, Missouri added 12,000 net private payroll jobs.
- In March, employment in Missouri **rose by 1,653**, and over the past 12 months it rose by 21,840.
- **Missouri's labor force participation rate rose to 63.4 percent** in March from 63.3 percent and **ranks 24th** in the nation. In the past 12 months, the labor force participation rate has risen by 0.1 percentage points.

Missouri
Unemployment Rate

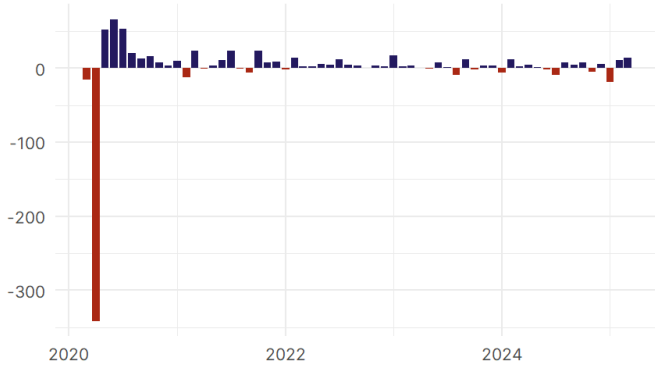


Source: Bureau of Labor Statistics, data is seasonally adjusted

Missouri Payroll Employment

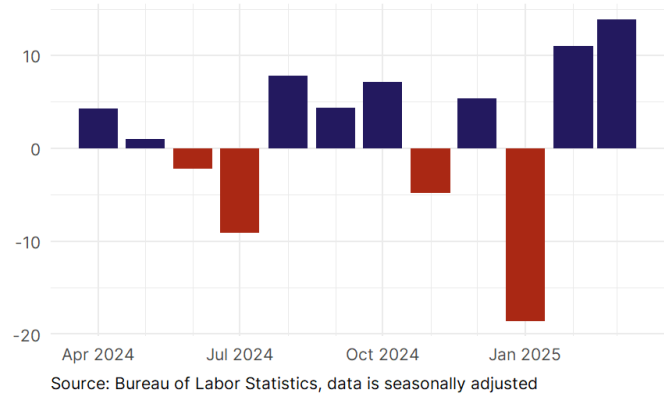
Missouri Nonfarm Payroll Jobs

Monthly change, past five years (thousands)



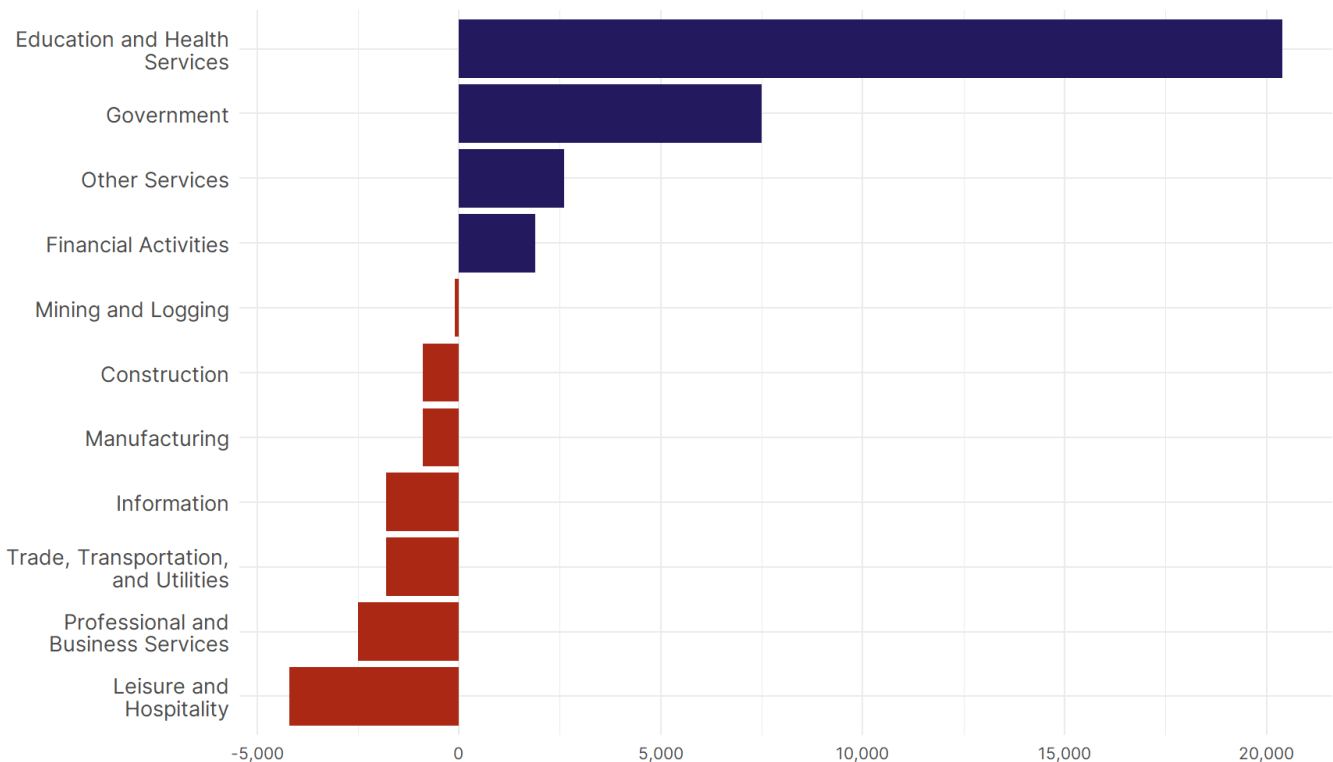
Missouri Nonfarm Payroll Jobs

Monthly change, past 12 months (thousands)



- **Missouri added 13,900 net payroll jobs, or 0.5 percent,** on a seasonally adjusted basis during March. In the prior month, Missouri added 11,000 jobs. Missouri nonfarm payroll employment has increased in **8 of the past 12 months**.
- Nationally, nonfarm payrolls **rose by 228,000 in March, or 0.1 percent**. Missouri is tied for 29th in the nation for percentage gain in nonfarm payroll employment over the past 12 months.
- **Missouri added 12,600 private sector jobs, or 0.5 percent,** on a seasonally adjusted basis during March. In the prior month, Missouri added 12,000 jobs. Missouri private sector payroll employment has increased in **9 of the past 12 months**.
- Nationally, private sector payroll jobs **rose by 209,000 jobs in March, or 0.2 percent**. Missouri is tied for 33rd in the nation for percentage gain in private sector payroll employment over the past 12 months.

Change in Missouri Payroll Employment by Sector over past 12 months

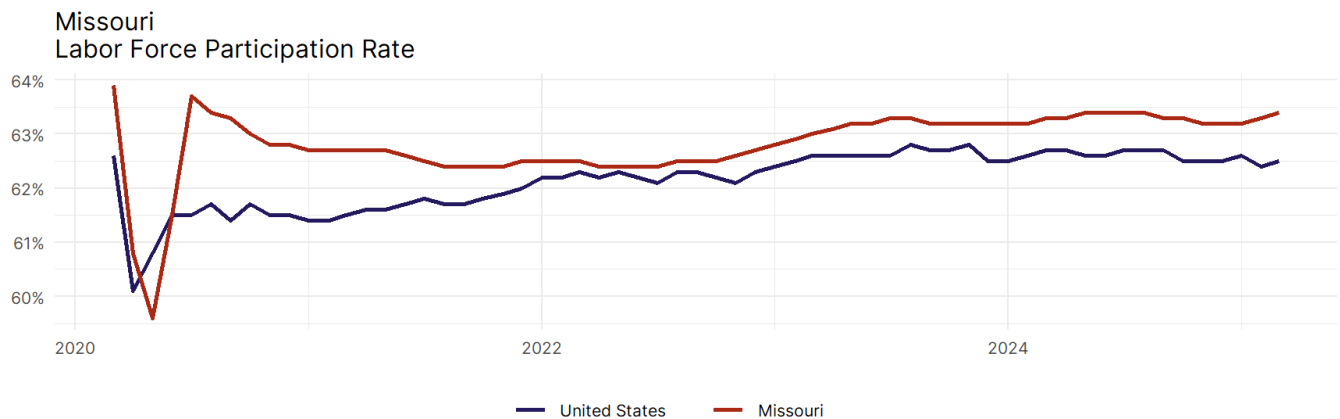


- The best performing sectors on a seasonally adjusted basis during March were **Leisure and Hospitality (5,800)** and **Education and Health Services (1,800)**.
- The poorest performing sectors during the month were **Information (-100)** and **Professional and Business Services (-200)**.
- The best performing sectors during the last 12 months were **Education and Health Services (20,400)** and **Government (7,500)**.
- The poorest performing sectors during the last 12 months were **Professional and Business Services (-2,500)** and **Leisure and Hospitality (-4,200)**.

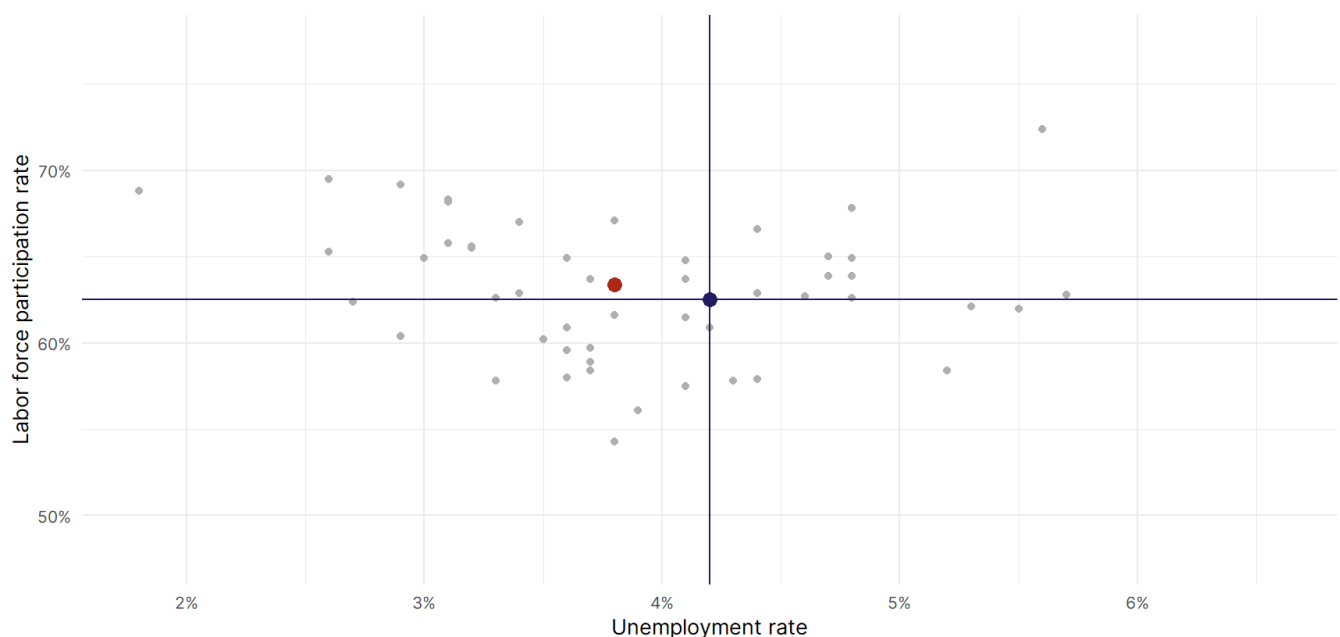
Missouri Labor Force

The labor force participation rate is the percentage of the civilian noninstitutionalized population age 16 and older who are employed or actively looking for work.

- The labor force participation rate in **Missouri rose to 63.4 percent in March from 63.3 percent in the prior month**.
- **Missouri ranks 24th** in the nation.
- The 10-year high for the labor force participation rate in Missouri was **64.7 percent** occurring in August 2016, and the 10-year low was **59.6 percent** in May 2020.
- The national labor force participation rate **rose by 0.1 percentage points to 62.5 percent** in March.



Source: Bureau of Labor Statistics, data is seasonally adjusted



Source: Bureau of Labor Statistics, data is seasonally adjusted