



United States Congress

# Joint Economic Committee

Est. 1946

Republicans

Representative David Schweikert, *Chairman*



## Nebraska Employment Update



March 2025 | Released April 18, 2025

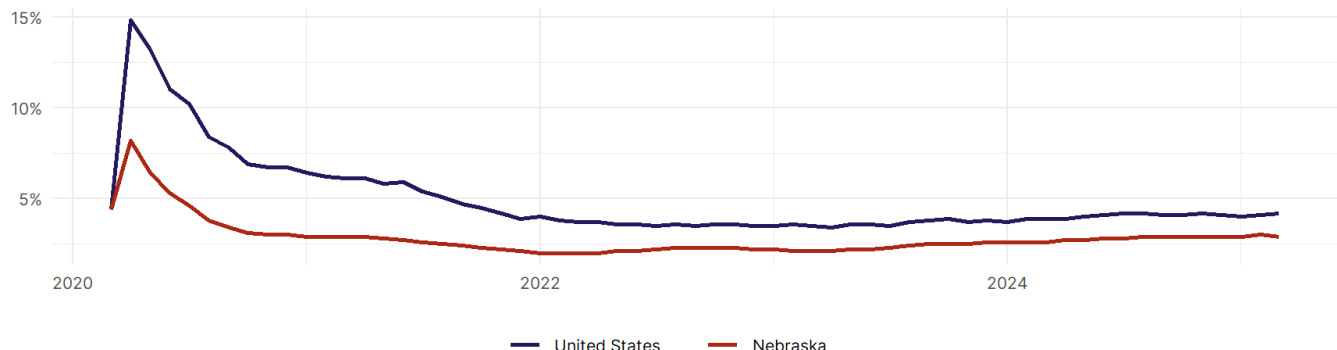
### United States Employment Snapshot

- In March, among the 50 states and the District of Columbia **unemployment fell in 15, rose in 17, and remained unchanged in 19.**
- The highest unemployment rate was 5.7 percent in **Nevada**, and the lowest was 1.8 percent in **South Dakota**. Nationally, the unemployment rate rose by 0.1 percentage point to 4.2 percent.
- In March, **payroll jobs rose in 38 states and fell in 12.** The largest payroll job percent increase was 0.5 percent in **Missouri**. The largest payroll job percent decline was 0.3 percent in **Connecticut**.

### Nebraska Employment Snapshot

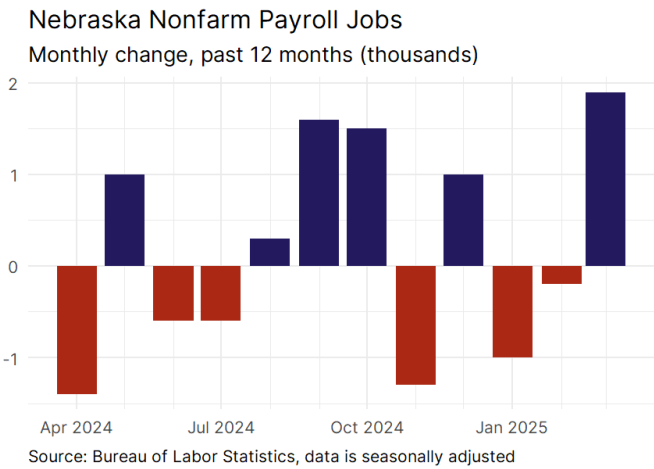
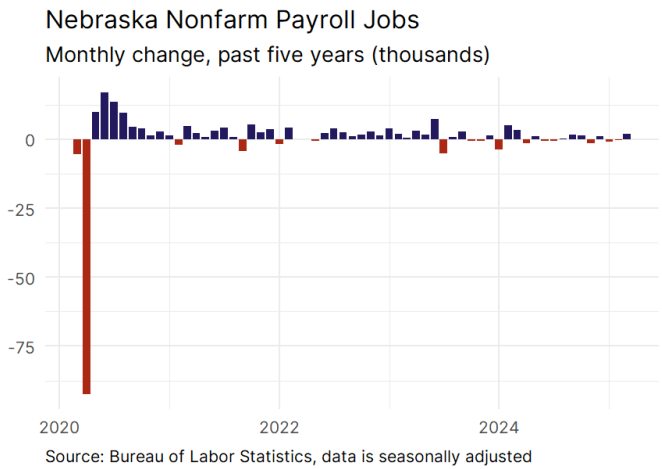
- In March, **Nebraska added 1,900 net payroll jobs** and the **unemployment rate fell by 0.1 percentage point to 2.9 percent.** In the prior month, Nebraska lost 200 net payroll jobs.
- Over the past 12 months, **Nebraska added 2,200 net payroll jobs** and the **unemployment rate rose by 0.3 percentage points from 2.6 percent.**
- Nationally, nonfarm payrolls **rose by 228,000 in March, or 0.1 percent.** Nebraska **is tied for 44th** in the nation for percentage gain in nonfarm payroll employment over the past 12 months.
- In March, **Nebraska's private sector added 2,300 net private payroll jobs**, and over the past 12 months it lost 300 private payroll jobs. In the prior month, Nebraska lost 500 net private payroll jobs.
- In March, employment in Nebraska **rose by 2,199**, and over the past 12 months it rose by 11,586.
- **Nebraska's labor force participation rate rose to 69.2 percent** in March from 69.1 percent and **ranks 3rd** in the nation. In the past 12 months, the labor force participation rate has risen by 0.4 percentage points.

Nebraska  
Unemployment Rate

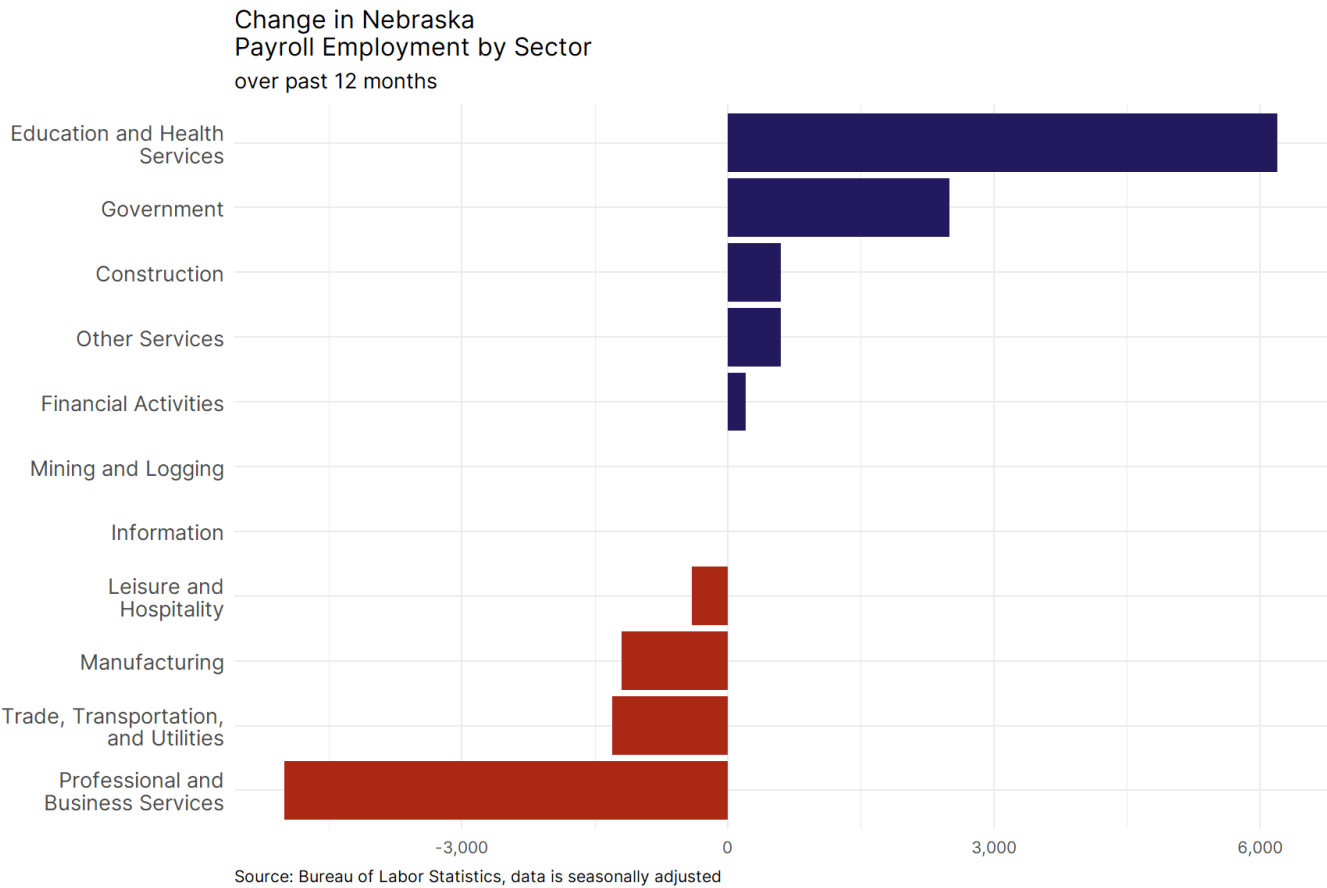


Source: Bureau of Labor Statistics, data is seasonally adjusted

# Nebraska Payroll Employment



- **Nebraska added 1,900 net payroll jobs, or 0.2 percent,** on a seasonally adjusted basis during March. In the prior month, Nebraska lost 200 jobs. Nebraska nonfarm payroll employment has increased in **6 of the past 12 months.**
- Nationally, nonfarm payrolls **rose by 228,000 in March, or 0.1 percent.** Nebraska is tied for 44th in the nation for percentage gain in nonfarm payroll employment over the past 12 months.
- **Nebraska added 2,300 private sector jobs, or 0.3 percent,** on a seasonally adjusted basis during March. In the prior month, Nebraska lost 500 jobs. Nebraska private sector payroll employment has increased in **6 of the past 12 months.**
- Nationally, private sector payroll jobs **rose by 209,000 jobs in March, or 0.2 percent.** Nebraska ranks 45th in the nation for percentage gain in private sector payroll employment over the past 12 months.



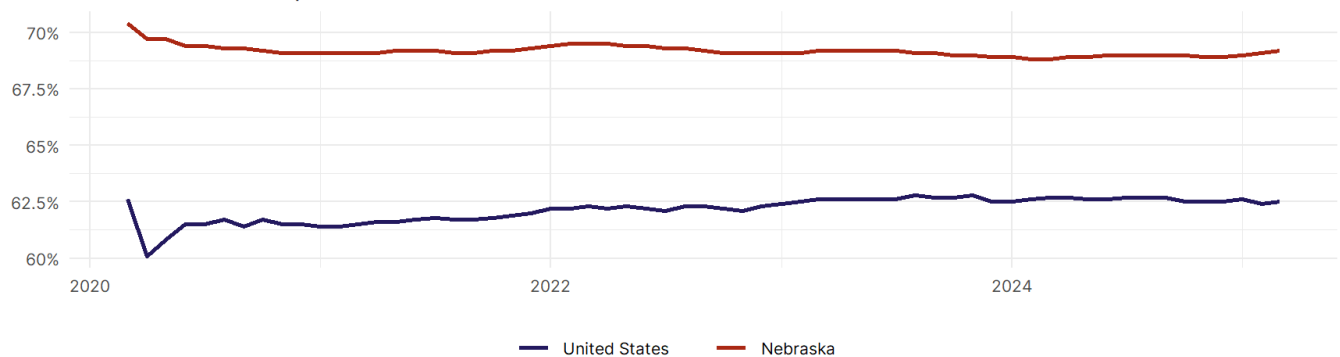
- The best performing sectors on a seasonally adjusted basis during March were **Education and Health Services (900)** and **Trade, Transportation, and Utilities (800)**.
- The poorest performing sectors during the month were **Financial Activities (-300)** and **Government (-400)**.
- The best performing sectors during the last 12 months were **Education and Health Services (6,200)** and **Government (2,500)**.
- The poorest performing sectors during the last 12 months were **Trade, Transportation, and Utilities (-1,300)** and **Professional and Business Services (-5,000)**.

### Nebraska Labor Force

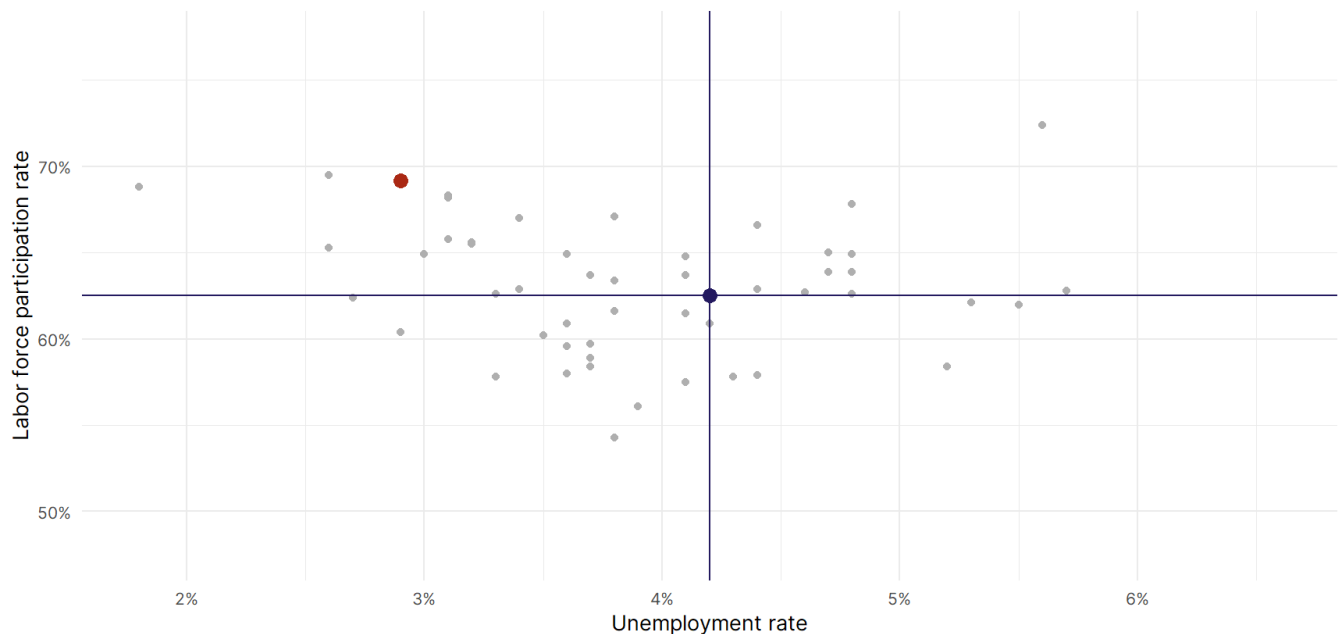
The labor force participation rate is the percentage of the civilian noninstitutionalized population age 16 and older who are employed or actively looking for work.

- The labor force participation rate in **Nebraska rose to 69.2 percent in March from 69.1 percent in the prior month**.
- **Nebraska ranks 3rd** in the nation.
- The 10-year high for the labor force participation rate in Nebraska was **70.5 percent** occurring in December 2019, and the 10-year low was **68.8 percent** occurring in March 2024.
- The national labor force participation rate **rose by 0.1 percentage points to 62.5 percent** in March.

Nebraska  
Labor Force Participation Rate



Source: Bureau of Labor Statistics, data is seasonally adjusted



Source: Bureau of Labor Statistics, data is seasonally adjusted