



United States Congress

# Joint Economic Committee

Est. 1946

Republicans

Representative David Schweikert, *Chairman*



## New Jersey Employment Update



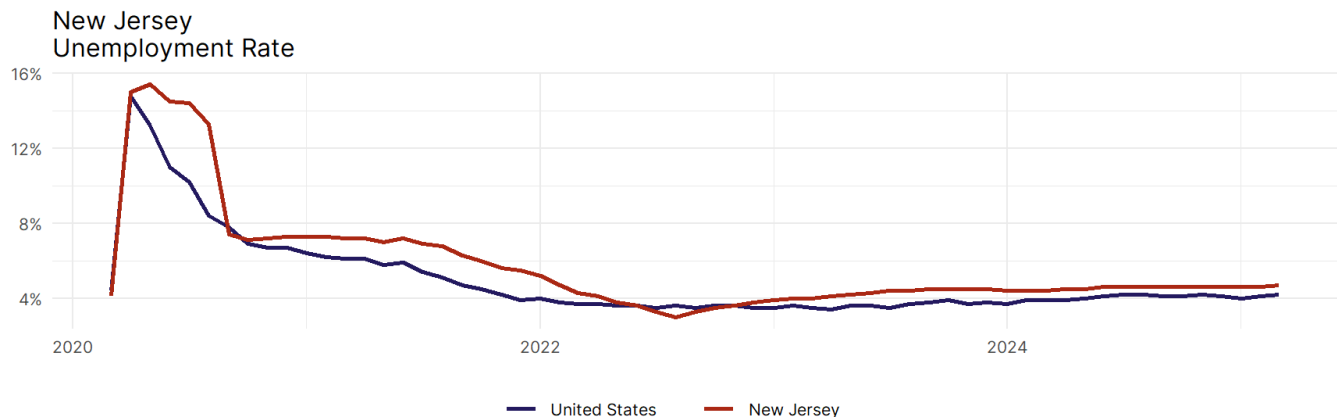
March 2025 | Released April 18, 2025

### United States Employment Snapshot

- In March, among the 50 states and the District of Columbia **unemployment fell in 15, rose in 17, and remained unchanged in 19.**
- The highest unemployment rate was 5.7 percent in **Nevada**, and the lowest was 1.8 percent in **South Dakota**. Nationally, the unemployment rate rose by 0.1 percentage point to 4.2 percent.
- In March, **payroll jobs rose in 38 states and fell in 12.** The largest payroll job percent increase was 0.5 percent in **Missouri**. The largest payroll job percent decline was 0.3 percent in **Connecticut**.

### New Jersey Employment Snapshot

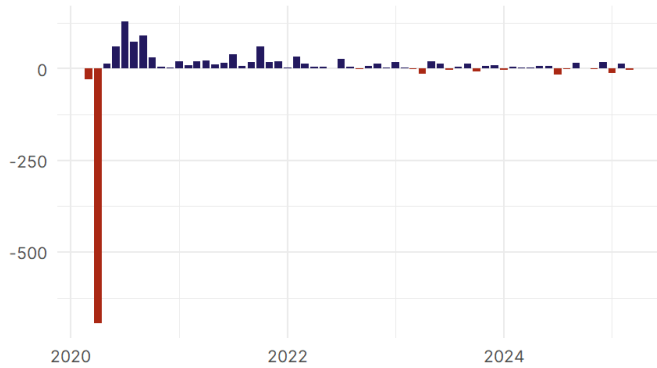
- In March, **New Jersey lost 2,700 net payroll jobs** and the **unemployment rate rose by 0.1 percentage point to 4.7 percent.** In the prior month, New Jersey added 13,700 net payroll jobs.
- Over the past 12 months, **New Jersey added 33,800 net payroll jobs** and the **unemployment rate rose by 0.3 percentage points from 4.4 percent.**
- Nationally, nonfarm payrolls **rose by 228,000 in March, or 0.1 percent.** New Jersey **is tied for 24th** in the nation for percentage gain in nonfarm payroll employment over the past 12 months.
- In March, **New Jersey's private sector lost 3,400 net private payroll jobs**, and over the past 12 months it added 25,800 private payroll jobs. In the prior month, New Jersey added 2,300 net private payroll jobs.
- In March, employment in New Jersey **fell by 3,980**, and over the past 12 months it fell by 3,114.
- **New Jersey's labor force participation rate remained steady at 63.9 percent** in March and **is tied for 20th** in the nation. In the past 12 months, the labor force participation rate has fallen by 0.5 percentage points.



Source: Bureau of Labor Statistics, data is seasonally adjusted

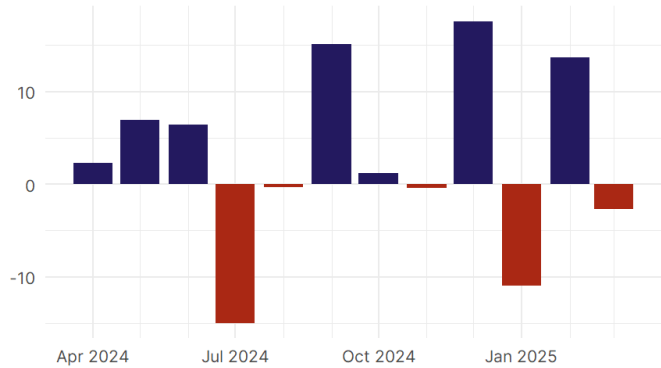
## New Jersey Payroll Employment

New Jersey Nonfarm Payroll Jobs  
Monthly change, past five years (thousands)



Source: Bureau of Labor Statistics, data is seasonally adjusted

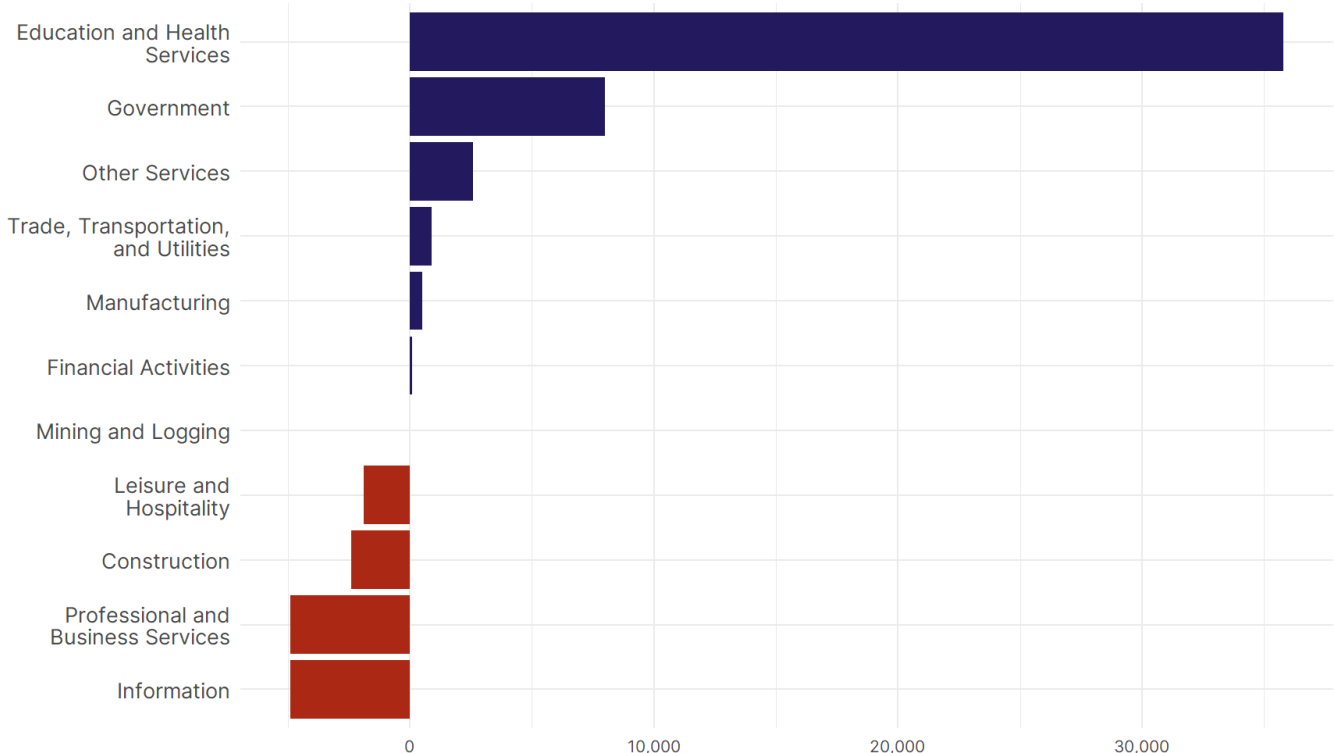
New Jersey Nonfarm Payroll Jobs  
Monthly change, past 12 months (thousands)



Source: Bureau of Labor Statistics, data is seasonally adjusted

- **New Jersey lost 2,700 net payroll jobs, or -0.1 percent,** on a seasonally adjusted basis during March. In the prior month, New Jersey added 13,700 jobs. New Jersey nonfarm payroll employment has increased in **7 of the past 12 months.**
- Nationally, nonfarm payrolls **rose by 228,000 in March, or 0.1 percent.** New Jersey is tied for 24th in the nation for percentage gain in nonfarm payroll employment over the past 12 months.
- **New Jersey lost 3,400 private sector jobs, or -0.1 percent,** on a seasonally adjusted basis during March. In the prior month, New Jersey added 2,300 jobs. New Jersey private sector payroll employment has increased in **8 of the past 12 months.**
- Nationally, private sector payroll jobs **rose by 209,000 jobs in March, or 0.2 percent.** New Jersey is tied for 26th in the nation for percentage gain in private sector payroll employment over the past 12 months.

Change in New Jersey  
Payroll Employment by Sector  
over past 12 months



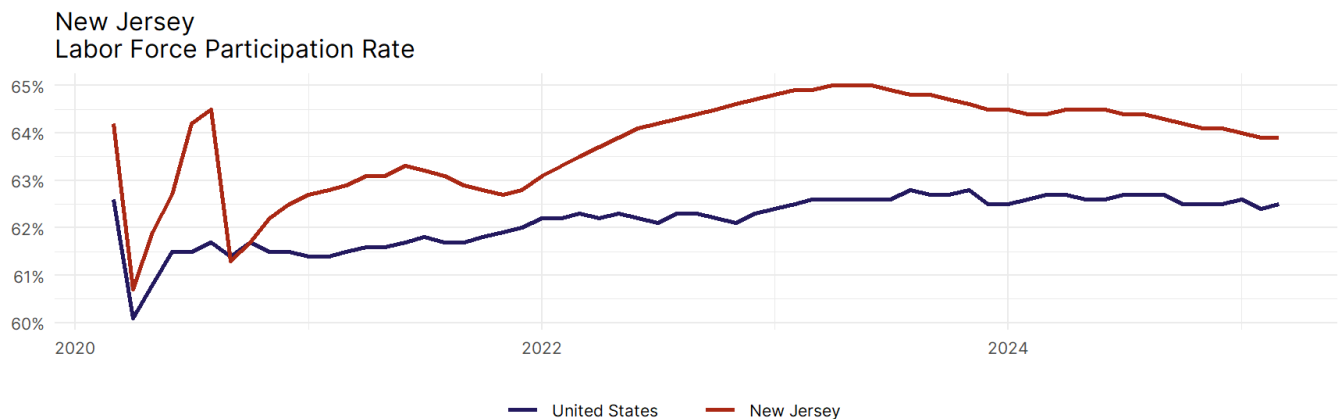
Source: Bureau of Labor Statistics, data is seasonally adjusted

- The best performing sectors on a seasonally adjusted basis during March were **Education and Health Services (2,700)** and **Other Services (1,000)**.
- The poorest performing sectors during the month were **Construction (-1,200)** and **Leisure and Hospitality (-3,600)**.
- The best performing sectors during the last 12 months were **Education and Health Services (35,800)** and **Government (8,000)**.
- The poorest performing sectors during the last 12 months were **Professional and Business Services (-4,900)** and **Information (-4,900)**.

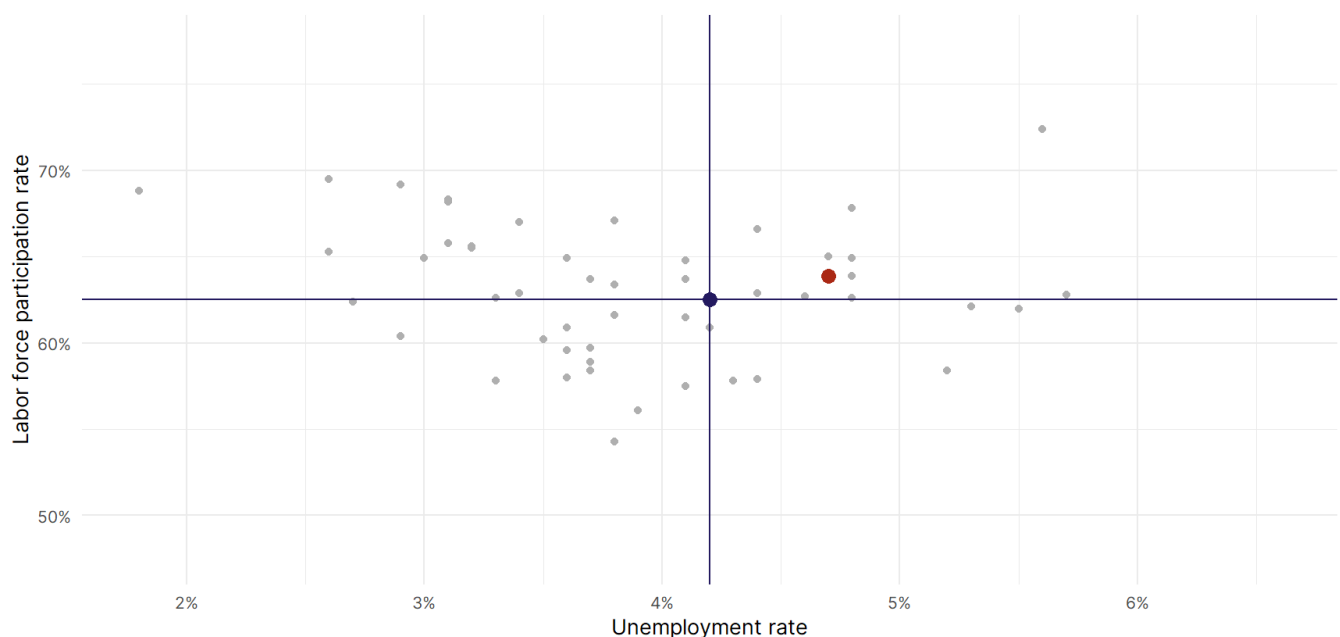
### New Jersey Labor Force

The labor force participation rate is the percentage of the civilian noninstitutionalized population age 16 and older who are employed or actively looking for work.

- The labor force participation rate in **New Jersey remained unchanged at 63.9 percent in March**.
- **New Jersey is tied for 20th** in the nation.
- The 10-year high for the labor force participation rate in New Jersey was **65 percent** occurring in June 2023, and the 10-year low was **60.7 percent** in April 2020.
- The national labor force participation rate **rose by 0.1 percentage points to 62.5 percent** in March.



Source: Bureau of Labor Statistics, data is seasonally adjusted



Source: Bureau of Labor Statistics, data is seasonally adjusted