



United States Congress

Joint Economic Committee

Est. 1946

Republicans

Representative David Schweikert, *Chairman*



New York Employment Update



March 2025 | Released April 18, 2025

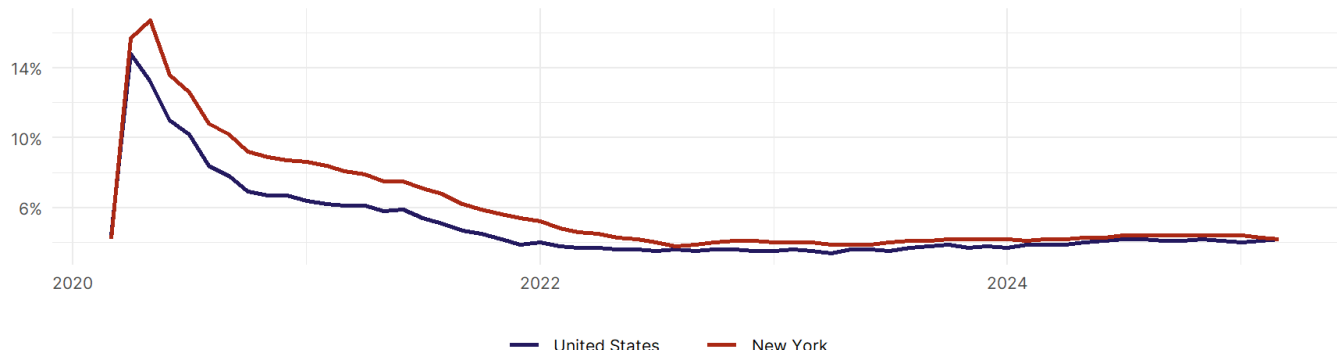
United States Employment Snapshot

- In March, among the 50 states and the District of Columbia **unemployment fell in 15, rose in 17, and remained unchanged in 19.**
- The highest unemployment rate was 5.7 percent in **Nevada**, and the lowest was 1.8 percent in **South Dakota**. Nationally, the unemployment rate rose by 0.1 percentage point to 4.2 percent.
- In March, **payroll jobs rose in 38 states and fell in 12.** The largest payroll job percent increase was 0.5 percent in **Missouri**. The largest payroll job percent decline was 0.3 percent in **Connecticut**.

New York Employment Snapshot

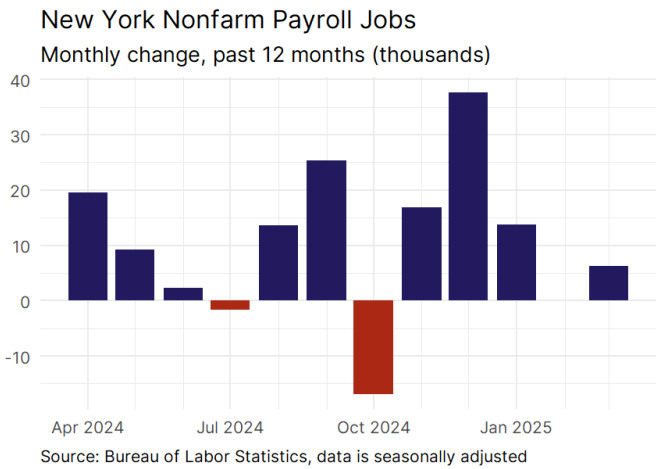
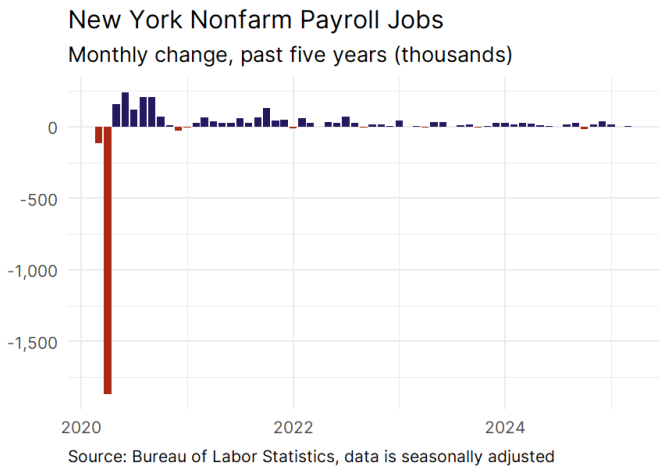
- In March, **New York added 6,300 net payroll jobs** and the **unemployment rate fell by 0.1 percentage point to 4.2 percent.** In the prior month, New York added 100 net payroll jobs.
- Over the past 12 months, **New York added 126,200 net payroll jobs** and the **unemployment rate remained unchanged.**
- Nationally, nonfarm payrolls **rose by 228,000 in March, or 0.1 percent.** New York **is tied for 9th** in the nation for percentage gain in nonfarm payroll employment over the past 12 months.
- In March, **New York's private sector added 5,600 net private payroll jobs**, and over the past 12 months it added 103,600 private payroll jobs. In the prior month, New York lost 600 net private payroll jobs.
- In March, employment in New York **rose by 14,705**, and over the past 12 months it rose by 38,645.
- **New York's labor force participation rate remained steady at 60.9 percent** in March and **is tied for 36th** in the nation. In the past 12 months, the labor force participation rate has remained unchanged.

New York
Unemployment Rate

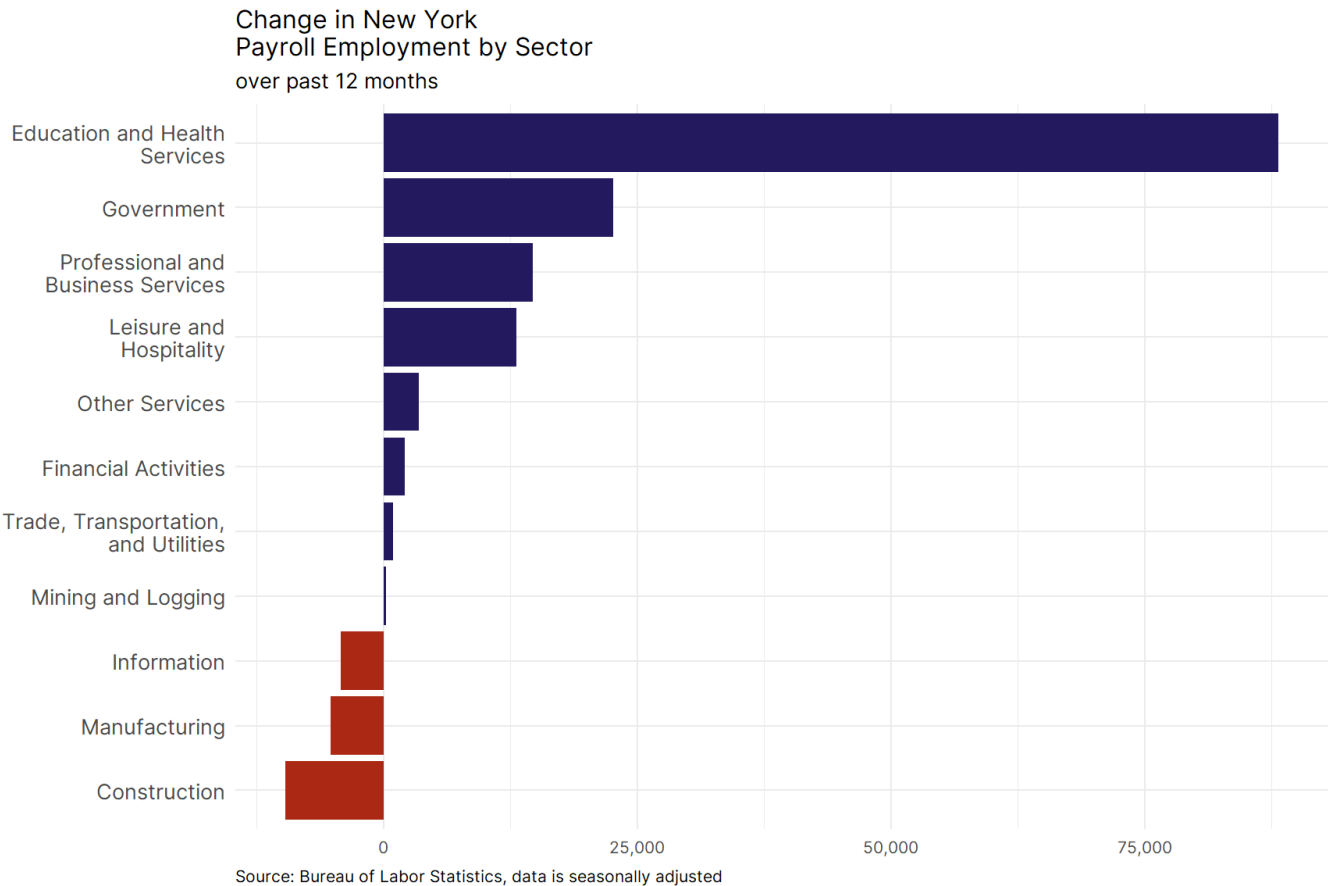


Source: Bureau of Labor Statistics, data is seasonally adjusted

New York Payroll Employment



- **New York added 6,300 net payroll jobs, or 0.1 percent,** on a seasonally adjusted basis during March. In the prior month, New York added 100 jobs. New York nonfarm payroll employment has increased in **10 of the past 12 months.**
- Nationally, nonfarm payrolls **rose by 228,000 in March, or 0.1 percent.** New York is tied for 9th in the nation for percentage gain in nonfarm payroll employment over the past 12 months.
- **New York added 5,600 private sector jobs, or 0.1 percent,** on a seasonally adjusted basis during March. In the prior month, New York lost 600 jobs. New York private sector payroll employment has increased in **9 of the past 12 months.**
- Nationally, private sector payroll jobs **rose by 209,000 jobs in March, or 0.2 percent.** New York is tied for 11th in the nation for percentage gain in private sector payroll employment over the past 12 months.



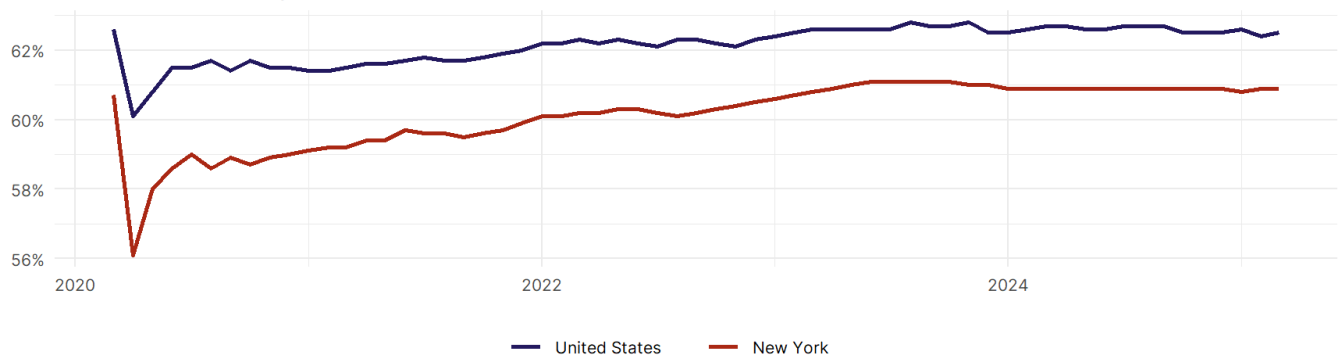
- The best performing sectors on a seasonally adjusted basis during March were **Education and Health Services (4,100)** and **Professional and Business Services (2,500)**.
- The poorest performing sectors during the month were **Construction tied with Manufacturing (-800)** and **Financial Activities (-1,200)**.
- The best performing sectors during the last 12 months were **Education and Health Services (88,200)** and **Government (22,600)**.
- The poorest performing sectors during the last 12 months were **Manufacturing (-5,200)** and **Construction (-9,700)**.

New York Labor Force

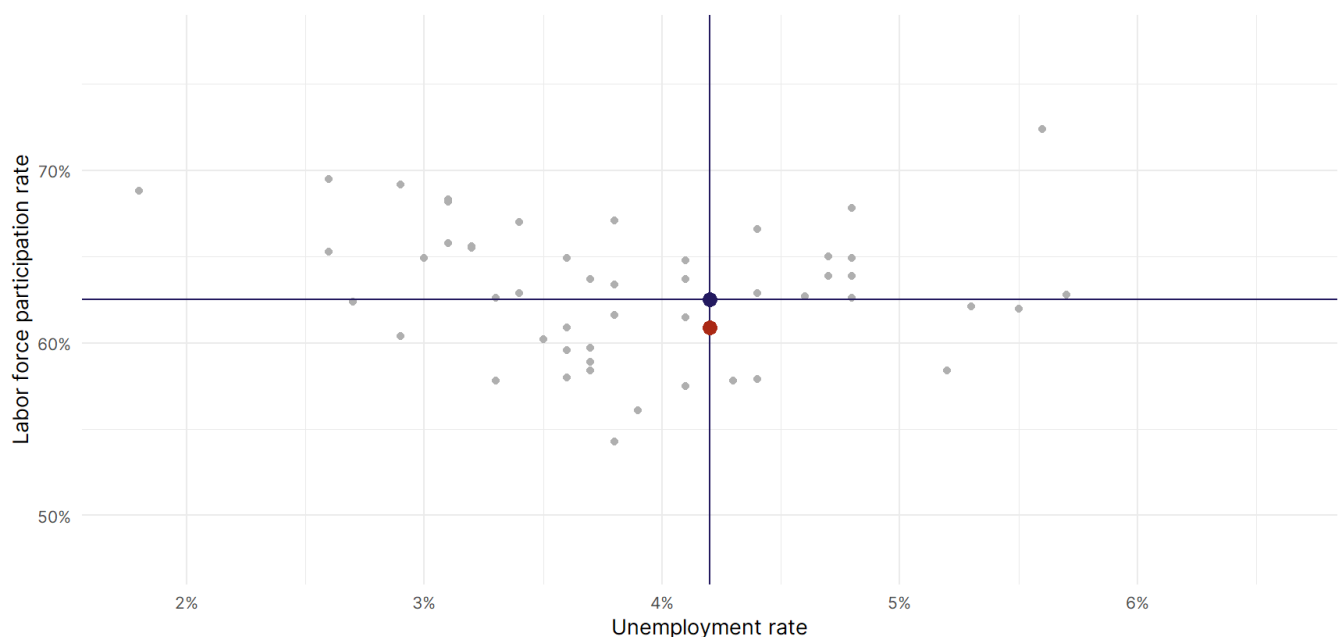
The labor force participation rate is the percentage of the civilian noninstitutionalized population age 16 and older who are employed or actively looking for work.

- The labor force participation rate in **New York remained unchanged at 60.9 percent in March.**
- **New York is tied for 36th** in the nation.
- The 10-year high for the labor force participation rate in New York was **61.1 percent** occurring in October 2023, and the 10-year low was **56.1 percent** in April 2020.
- The national labor force participation rate **rose by 0.1 percentage points to 62.5 percent** in March.

New York
Labor Force Participation Rate



Source: Bureau of Labor Statistics, data is seasonally adjusted



Source: Bureau of Labor Statistics, data is seasonally adjusted