



United States Congress

# Joint Economic Committee

Est. 1946

Republicans

Representative David Schweikert, *Chairman*



## Oregon Employment Update



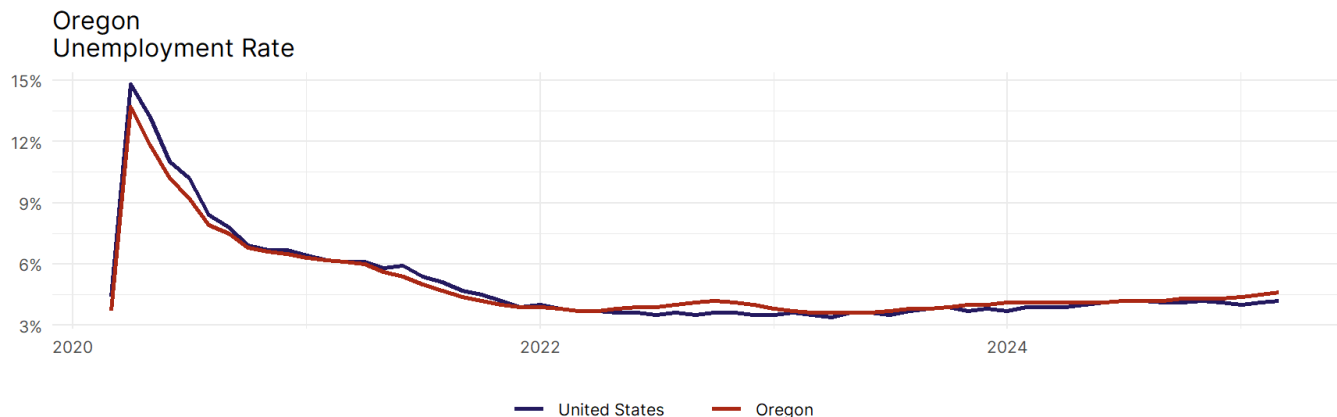
March 2025 | Released April 18, 2025

### United States Employment Snapshot

- In March, among the 50 states and the District of Columbia **unemployment fell in 15, rose in 17, and remained unchanged in 19.**
- The highest unemployment rate was 5.7 percent in **Nevada**, and the lowest was 1.8 percent in **South Dakota**. Nationally, the unemployment rate rose by 0.1 percentage point to 4.2 percent.
- In March, **payroll jobs rose in 38 states and fell in 12.** The largest payroll job percent increase was 0.5 percent in **Missouri**. The largest payroll job percent decline was 0.3 percent in **Connecticut**.

### Oregon Employment Snapshot

- In March, **Oregon added 7,300 net payroll jobs** and the **unemployment rate rose by 0.1 percentage point to 4.6 percent.** In the prior month, Oregon added 1,600 net payroll jobs.
- Over the past 12 months, **Oregon added 24,700 net payroll jobs** and the **unemployment rate rose by 0.5 percentage points from 4.1 percent.**
- Nationally, nonfarm payrolls **rose by 228,000 in March, or 0.1 percent.** Oregon is **tied for 12th** in the nation for percentage gain in nonfarm payroll employment over the past 12 months.
- In March, **Oregon's private sector added 7,600 net private payroll jobs**, and over the past 12 months it added 17,700 private payroll jobs. In the prior month, Oregon added 1,500 net private payroll jobs.
- In March, employment in Oregon **fell by 2,630**, and over the past 12 months it rose by 4,744.
- **Oregon's labor force participation rate remained steady at 62.7 percent** in March and **ranks 28th** in the nation. In the past 12 months, the labor force participation rate has risen by 0.1 percentage points.

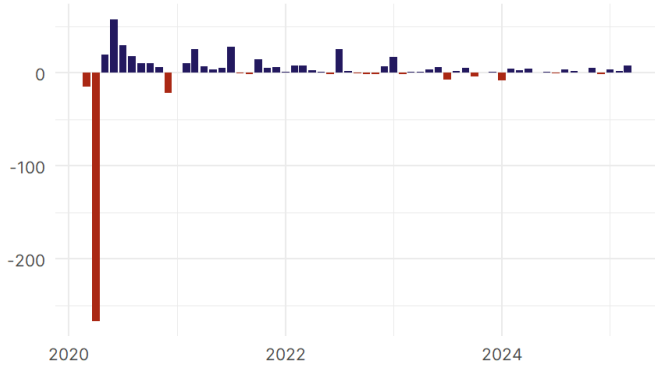


Source: Bureau of Labor Statistics, data is seasonally adjusted

## Oregon Payroll Employment

### Oregon Nonfarm Payroll Jobs

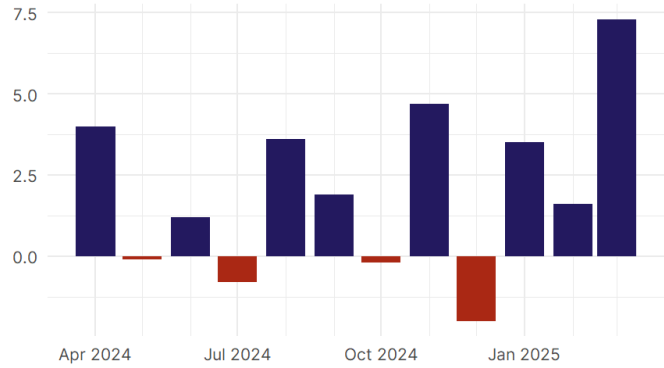
Monthly change, past five years (thousands)



Source: Bureau of Labor Statistics, data is seasonally adjusted

### Oregon Nonfarm Payroll Jobs

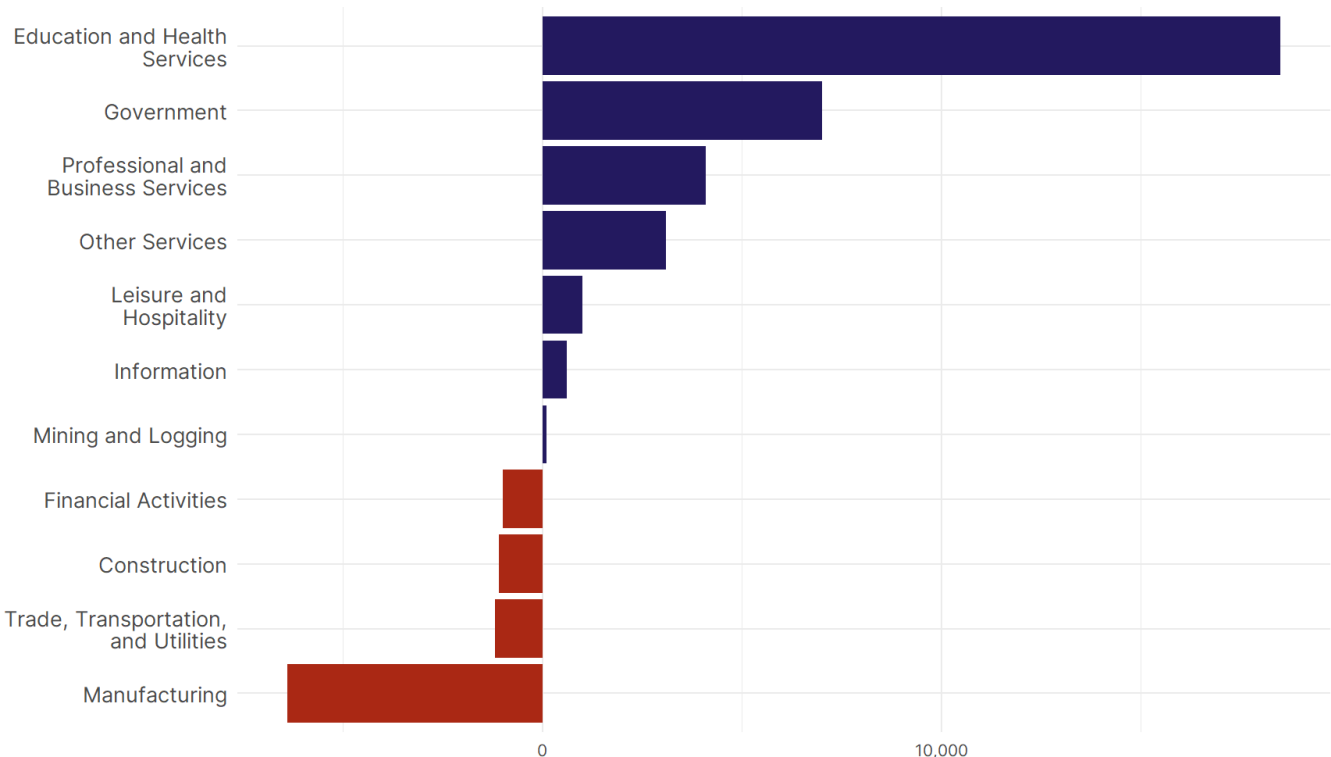
Monthly change, past 12 months (thousands)



Source: Bureau of Labor Statistics, data is seasonally adjusted

- **Oregon added 7,300 net payroll jobs, or 0.4 percent,** on a seasonally adjusted basis during March. In the prior month, Oregon added 1,600 jobs. Oregon nonfarm payroll employment has increased in **8 of the past 12 months.**
- Nationally, nonfarm payrolls **rose by 228,000 in March, or 0.1 percent.** Oregon is tied for 12th in the nation for percentage gain in nonfarm payroll employment over the past 12 months.
- **Oregon added 7,600 private sector jobs, or 0.5 percent,** on a seasonally adjusted basis during March. In the prior month, Oregon added 1,500 jobs. Oregon private sector payroll employment has increased in **7 of the past 12 months.**
- Nationally, private sector payroll jobs **rose by 209,000 jobs in March, or 0.2 percent.** Oregon is tied for 13th in the nation for percentage gain in private sector payroll employment over the past 12 months.

### Change in Oregon Payroll Employment by Sector over past 12 months



Source: Bureau of Labor Statistics, data is seasonally adjusted

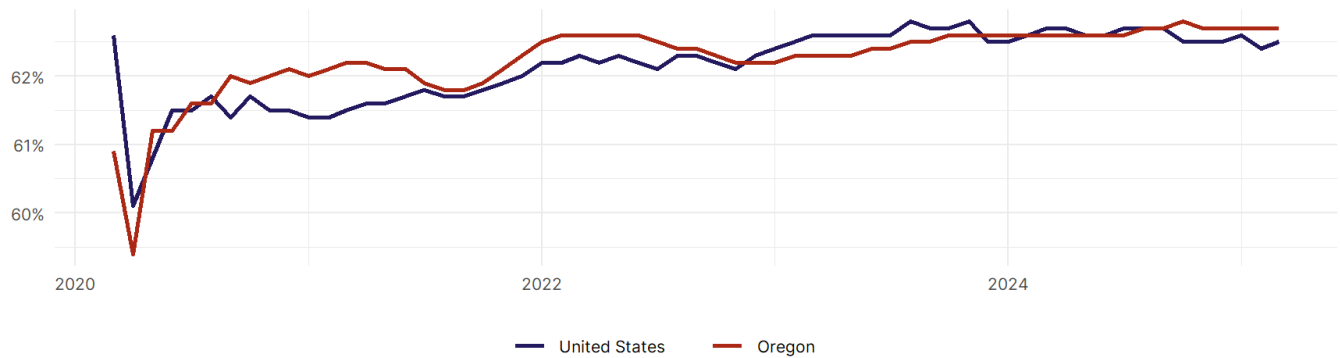
- The best performing sectors on a seasonally adjusted basis during March were **Education and Health Services (4,600)** and **Trade, Transportation, and Utilities (1,100)**.
- The poorest performing sectors during the month were **Government (-300)** and **Financial Activities (-400)**.
- The best performing sectors during the last 12 months were **Education and Health Services (18,500)** and **Government (7,000)**.
- The poorest performing sectors during the last 12 months were **Trade, Transportation, and Utilities (-1,200)** and **Manufacturing (-6,400)**.

## Oregon Labor Force

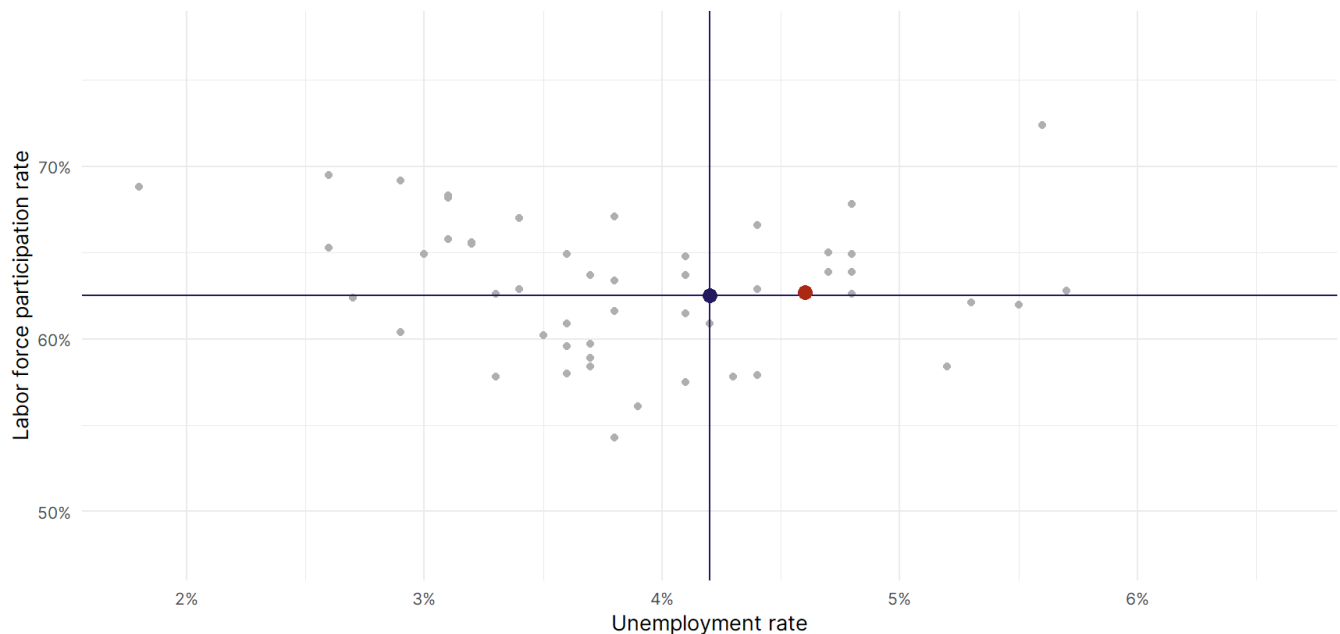
The labor force participation rate is the percentage of the civilian noninstitutionalized population age 16 and older who are employed or actively looking for work.

- The labor force participation rate in **Oregon remained unchanged at 62.7 percent in March**.
- **Oregon ranks 28th** in the nation.
- The 10-year high for the labor force participation rate in Oregon was **62.8 percent** in October 2024, and the 10-year low was **59.4 percent** in April 2020.
- The national labor force participation rate **rose by 0.1 percentage points to 62.5 percent** in March.

Oregon  
Labor Force Participation Rate



Source: Bureau of Labor Statistics, data is seasonally adjusted



Source: Bureau of Labor Statistics, data is seasonally adjusted