



United States Congress

Joint Economic Committee

Est. 1946

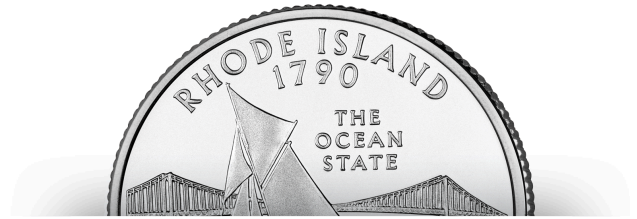
Republicans

Representative David Schweikert, *Chairman*



Rhode Island

Employment Update



March 2025 | Released April 18, 2025

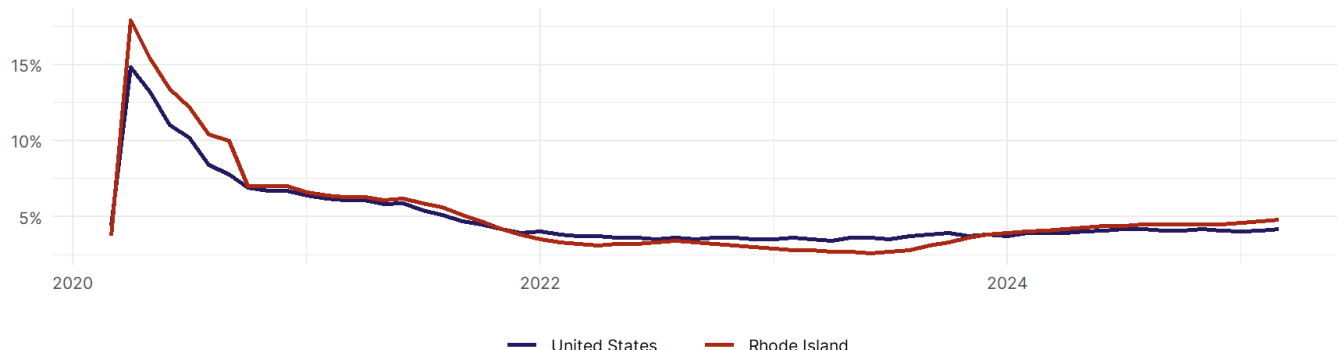
United States Employment Snapshot

- In March, among the 50 states and the District of Columbia **unemployment fell in 15, rose in 17, and remained unchanged in 19.**
- The highest unemployment rate was 5.7 percent in **Nevada**, and the lowest was 1.8 percent in **South Dakota**. Nationally, the unemployment rate rose by 0.1 percentage point to 4.2 percent.
- In March, **payroll jobs rose in 38 states and fell in 12.** The largest payroll job percent increase was 0.5 percent in **Missouri**. The largest payroll job percent decline was 0.3 percent in **Connecticut**.

Rhode Island Employment Snapshot

- In March, **Rhode Island added 400 net payroll jobs** and the **unemployment rate rose by 0.1 percentage point to 4.8 percent.** In the prior month, Rhode Island added 800 net payroll jobs.
- Over the past 12 months, **Rhode Island added 3,700 net payroll jobs** and the **unemployment rate rose by 0.7 percentage points from 4.1 percent.**
- Nationally, nonfarm payrolls **rose by 228,000 in March, or 0.1 percent.** Rhode Island **is tied for 29th** in the nation for percentage gain in nonfarm payroll employment over the past 12 months.
- In March, **Rhode Island's private sector added 800 net private payroll jobs**, and over the past 12 months it added 3,900 private payroll jobs. In the prior month, Rhode Island added 1,000 net private payroll jobs.
- In March, employment in Rhode Island **fell by 2,183**, and over the past 12 months it fell by 4,959.
- **Rhode Island's labor force participation rate fell to 63.9 percent** in March from 64.1 percent and **is tied for 20th** in the nation. In the past 12 months, the labor force participation rate has fallen by 0.6 percentage points.

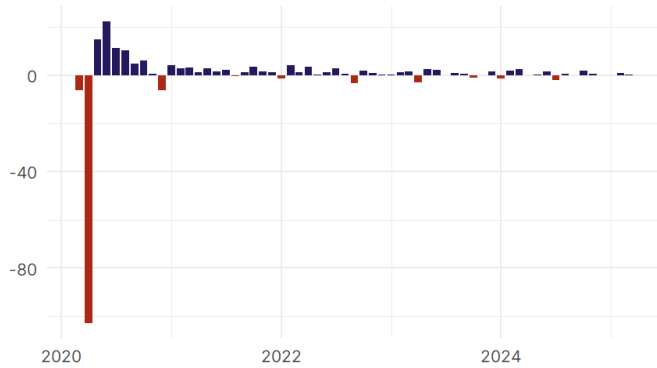
Rhode Island
Unemployment Rate



Source: Bureau of Labor Statistics, data is seasonally adjusted

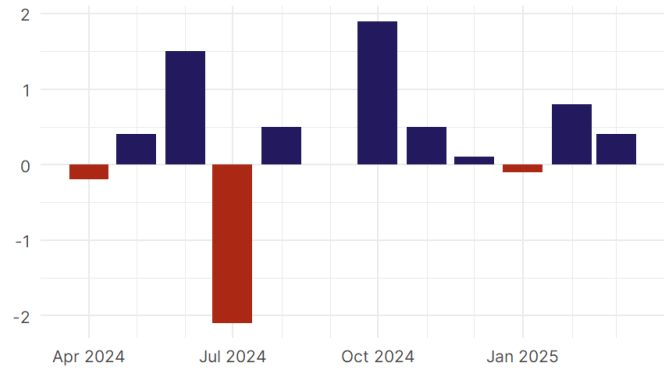
Rhode Island Payroll Employment

Rhode Island Nonfarm Payroll Jobs
Monthly change, past five years (thousands)



Source: Bureau of Labor Statistics, data is seasonally adjusted

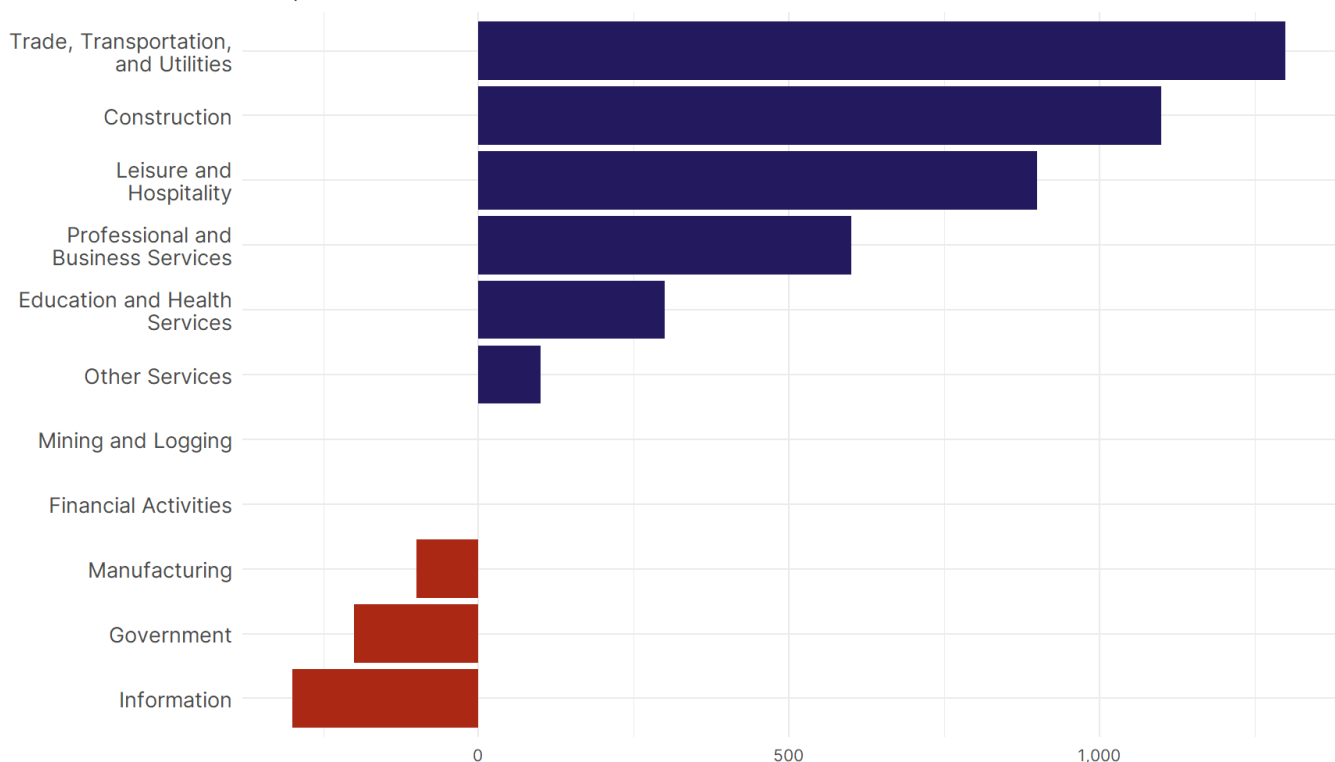
Rhode Island Nonfarm Payroll Jobs
Monthly change, past 12 months (thousands)



Source: Bureau of Labor Statistics, data is seasonally adjusted

- **Rhode Island added 400 net payroll jobs, or 0.1 percent,** on a seasonally adjusted basis during March. In the prior month, Rhode Island added 800 jobs. Rhode Island nonfarm payroll employment has increased in **8 of the past 12 months**.
- Nationally, nonfarm payrolls **rose by 228,000 in March, or 0.1 percent**. Rhode Island is tied for 29th in the nation for percentage gain in nonfarm payroll employment over the past 12 months.
- **Rhode Island added 800 private sector jobs, or 0.2 percent,** on a seasonally adjusted basis during March. In the prior month, Rhode Island added 1,000 jobs. Rhode Island private sector payroll employment has increased in **9 of the past 12 months**.
- Nationally, private sector payroll jobs **rose by 209,000 jobs in March, or 0.2 percent**. Rhode Island is tied for 19th in the nation for percentage gain in private sector payroll employment over the past 12 months.

Change in Rhode Island
Payroll Employment by Sector
over past 12 months



Source: Bureau of Labor Statistics, data is seasonally adjusted

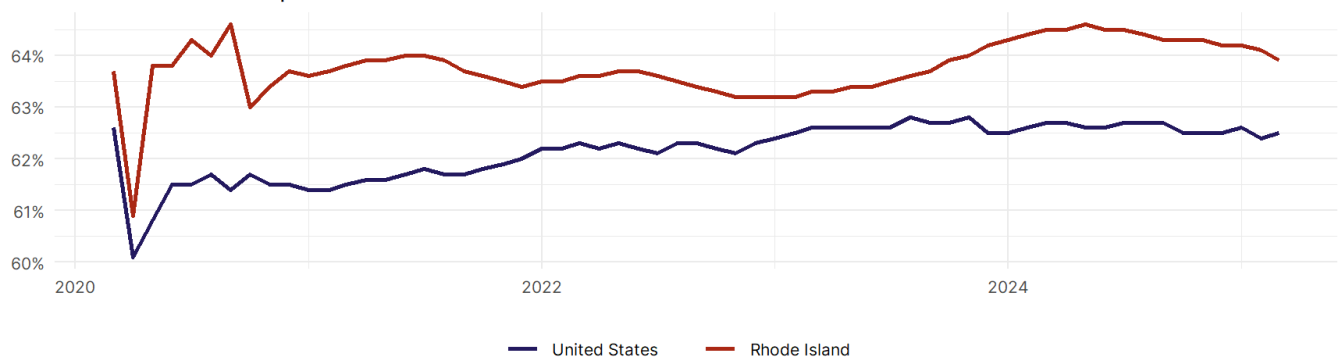
- The best performing sectors on a seasonally adjusted basis during March were **Education and Health Services (700)** and **Professional and Business Services (500)**.
- The poorest performing sectors during the month were **Manufacturing tied with Leisure and Hospitality (-200)** and **Trade, Transportation, and Utilities tied with Government (-400)**.
- The best performing sectors during the last 12 months were **Trade, Transportation, and Utilities (1,300)** and **Construction (1,100)**.
- The poorest performing sectors during the last 12 months were **Government (-200)** and **Information (-300)**.

Rhode Island Labor Force

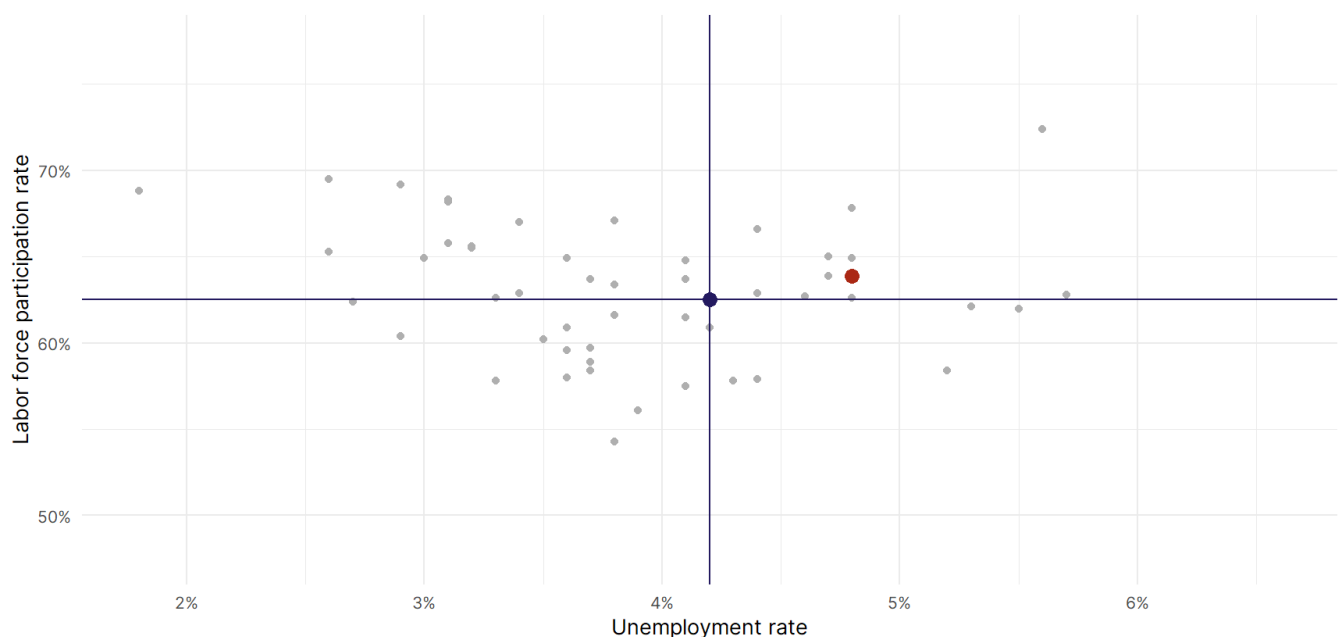
The labor force participation rate is the percentage of the civilian noninstitutionalized population age 16 and older who are employed or actively looking for work.

- The labor force participation rate in **Rhode Island fell to 63.9 percent in March from 64.1 percent in the prior month.**
- **Rhode Island is tied for 20th** in the nation.
- The 10-year high for the labor force participation rate in Rhode Island was **65.2 percent** in March 2015, and the 10-year low was **60.9 percent** in April 2020.
- The national labor force participation rate **rose by 0.1 percentage points to 62.5 percent** in March.

Rhode Island
Labor Force Participation Rate



Source: Bureau of Labor Statistics, data is seasonally adjusted



Source: Bureau of Labor Statistics, data is seasonally adjusted