



United States Congress

Joint Economic Committee

Est. 1946

Republicans

Representative David Schweikert, *Chairman*



South Dakota Employment Update



March 2025 | Released April 18, 2025

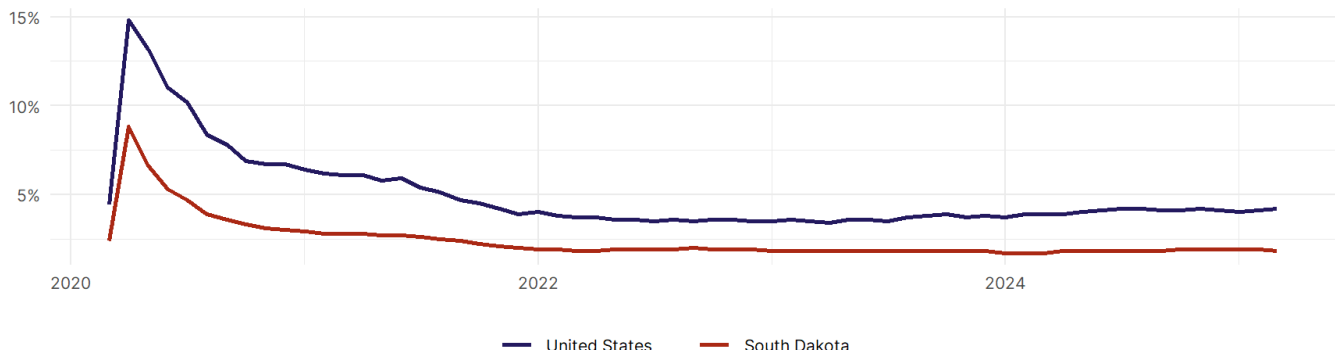
United States Employment Snapshot

- In March, among the 50 states and the District of Columbia **unemployment fell in 15, rose in 17, and remained unchanged in 19.**
- The highest unemployment rate was 5.7 percent in **Nevada**, and the lowest was 1.8 percent in **South Dakota**. Nationally, the unemployment rate rose by 0.1 percentage point to 4.2 percent.
- In March, **payroll jobs rose in 38 states and fell in 12.** The largest payroll job percent increase was 0.5 percent in **Missouri**. The largest payroll job percent decline was 0.3 percent in **Connecticut**.

South Dakota Employment Snapshot

- In March, **South Dakota added 100 net payroll jobs** and the **unemployment rate fell by 0.1 percentage point to 1.8 percent.** In the prior month, South Dakota lost 1,200 net payroll jobs.
- Over the past 12 months, **South Dakota added 3,800 net payroll jobs** and the **unemployment rate rose by 0.1 percentage point from 1.7 percent.**
- Nationally, nonfarm payrolls **rose by 228,000 in March, or 0.1 percent.** South Dakota **is tied for 24th** in the nation for percentage gain in nonfarm payroll employment over the past 12 months.
- In March, **South Dakota's private sector added 200 net private payroll jobs**, and over the past 12 months it added 2,800 private payroll jobs. In the prior month, South Dakota lost 1,400 net private payroll jobs.
- In March, employment in South Dakota **rose by 780**, and over the past 12 months it rose by 6,800.
- **South Dakota's labor force participation rate remained steady at 68.8 percent** in March and **ranks 4th** in the nation. In the past 12 months, the labor force participation rate has risen by 0.3 percentage points.

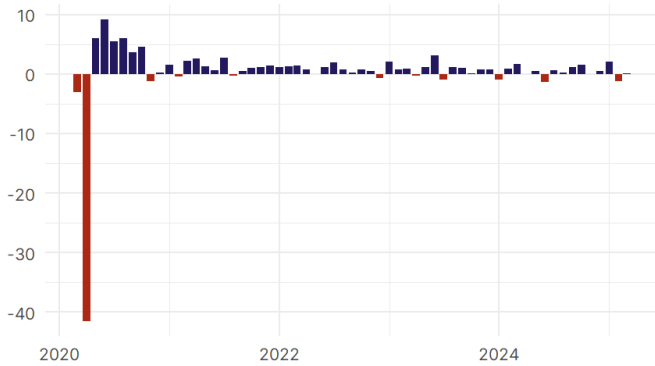
South Dakota
Unemployment Rate



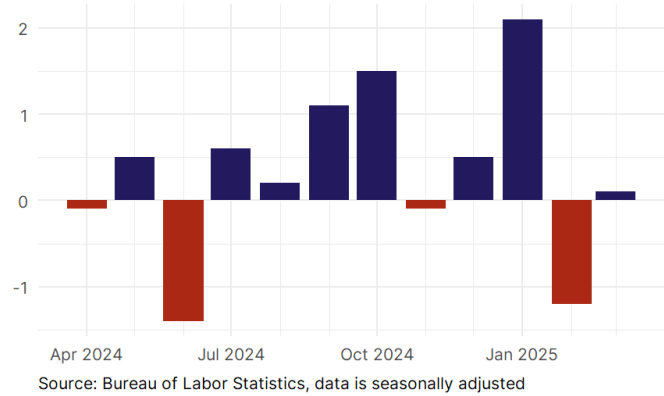
Source: Bureau of Labor Statistics, data is seasonally adjusted

South Dakota Payroll Employment

South Dakota Nonfarm Payroll Jobs
Monthly change, past five years (thousands)

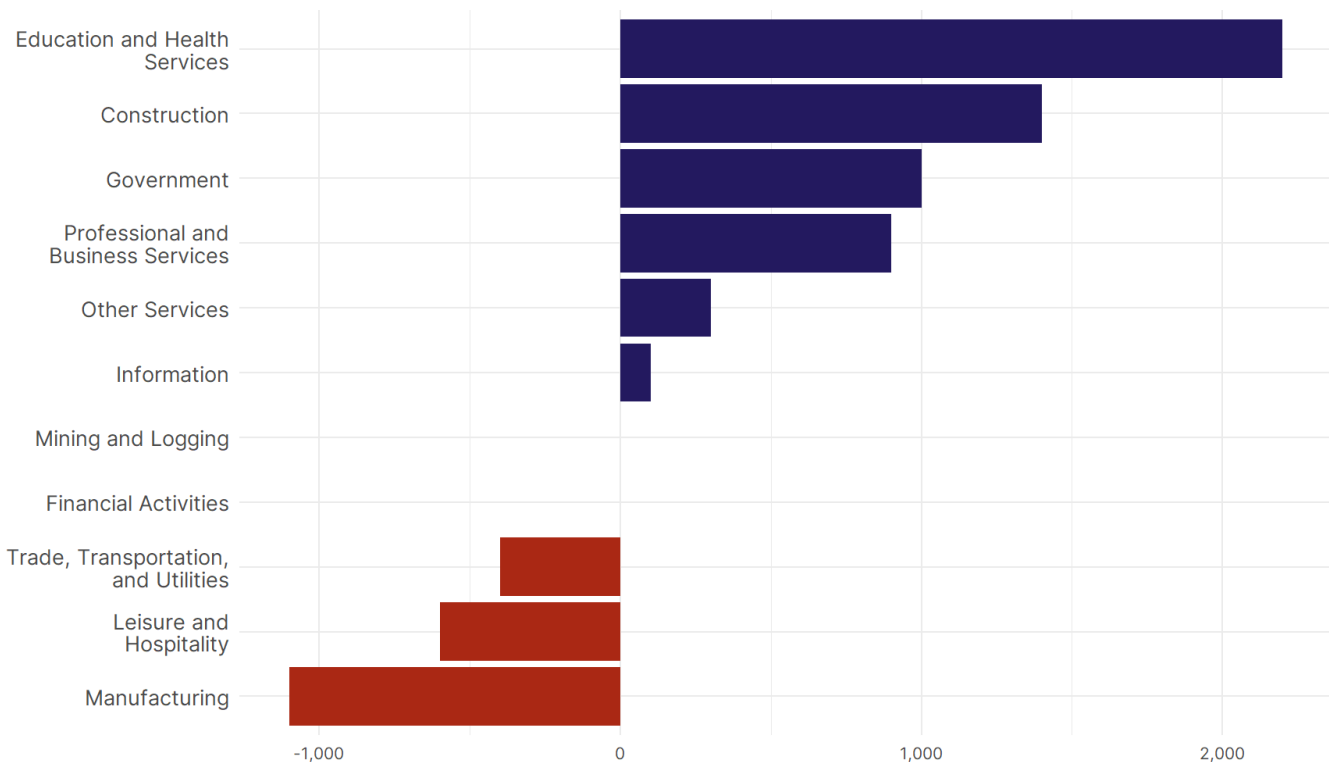


South Dakota Nonfarm Payroll Jobs
Monthly change, past 12 months (thousands)



- **South Dakota added 100 net payroll jobs, or 0 percent,** on a seasonally adjusted basis during March. In the prior month, South Dakota lost 1,200 jobs. South Dakota nonfarm payroll employment has increased in **8 of the past 12 months**.
- Nationally, nonfarm payrolls **rose by 228,000 in March, or 0.1 percent**. South Dakota is tied for 24th in the nation for percentage gain in nonfarm payroll employment over the past 12 months.
- **South Dakota added 200 private sector jobs, or 0.1 percent,** on a seasonally adjusted basis during March. In the prior month, South Dakota lost 1,400 jobs. South Dakota private sector payroll employment has increased in **8 of the past 12 months**.
- Nationally, private sector payroll jobs **rose by 209,000 jobs in March, or 0.2 percent**. South Dakota is tied for 26th in the nation for percentage gain in private sector payroll employment over the past 12 months.

Change in South Dakota
Payroll Employment by Sector
over past 12 months



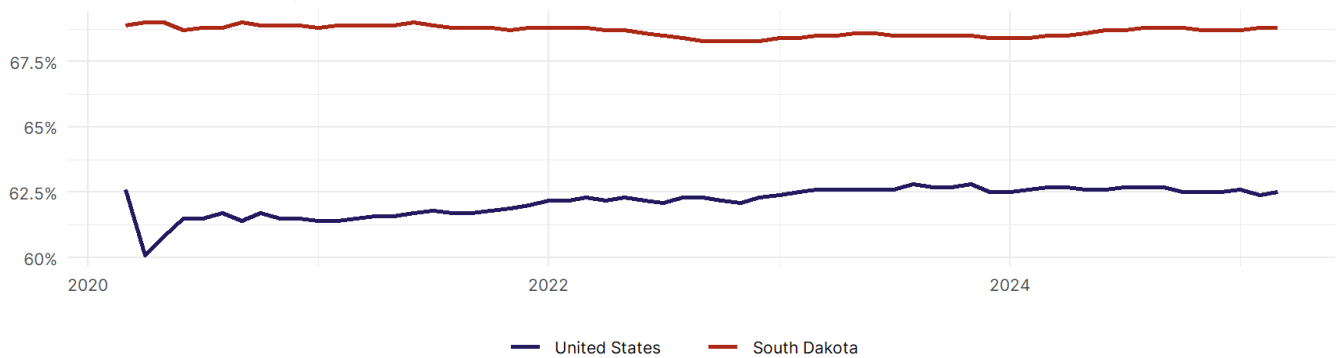
- The best performing sectors on a seasonally adjusted basis during March were **Education and Health Services (200)** and **Construction (200)**.
- The poorest performing sectors during the month were **Trade, Transportation, and Utilities tied with Government (-100)** and **Leisure and Hospitality (-400)**.
- The best performing sectors during the last 12 months were **Education and Health Services (2,200)** and **Construction (1,400)**.
- The poorest performing sectors during the last 12 months were **Leisure and Hospitality (-600)** and **Manufacturing (-1,100)**.

South Dakota Labor Force

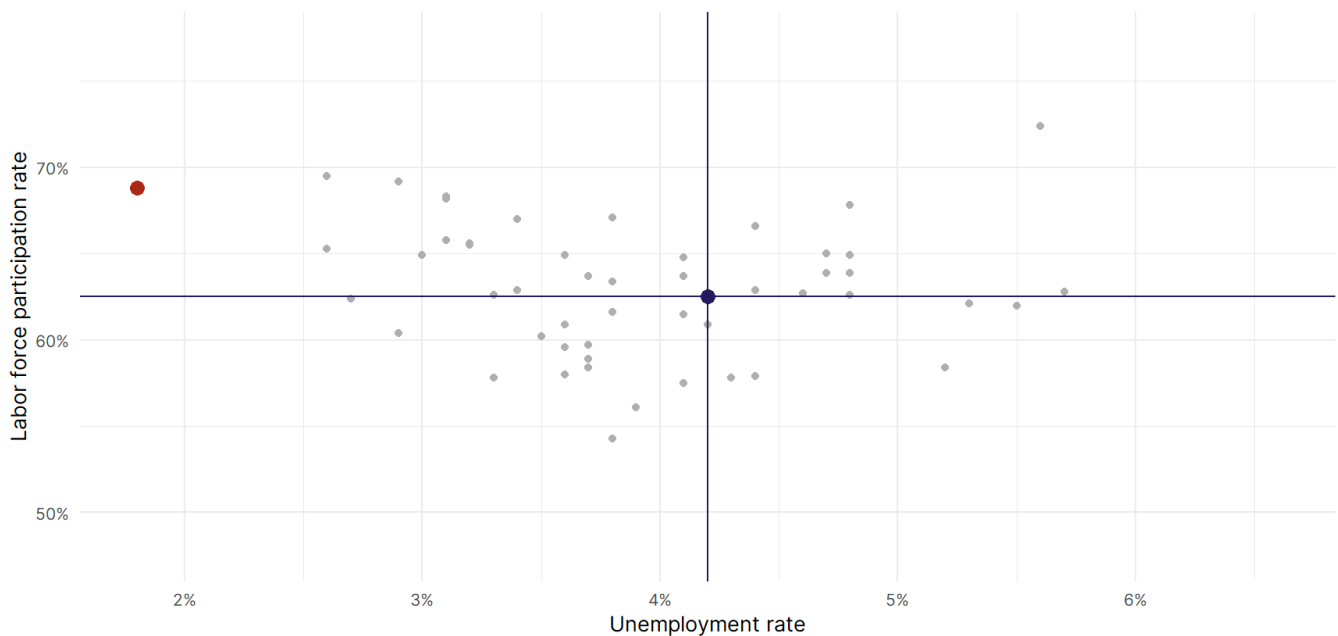
The labor force participation rate is the percentage of the civilian noninstitutionalized population age 16 and older who are employed or actively looking for work.

- The labor force participation rate in **South Dakota remained unchanged at 68.8 percent in March**.
- **South Dakota ranks 4th** in the nation.
- The 10-year high for the labor force participation rate in South Dakota was **69.9 percent** occurring in April 2015, and the 10-year low was **68.3 percent** occurring in December 2022.
- The national labor force participation rate **rose by 0.1 percentage points to 62.5 percent** in March.

South Dakota
Labor Force Participation Rate



Source: Bureau of Labor Statistics, data is seasonally adjusted



Source: Bureau of Labor Statistics, data is seasonally adjusted