



United States Congress

Joint Economic Committee

Est. 1946

Republicans

Representative David Schweikert, *Chairman*



Texas

Employment Update



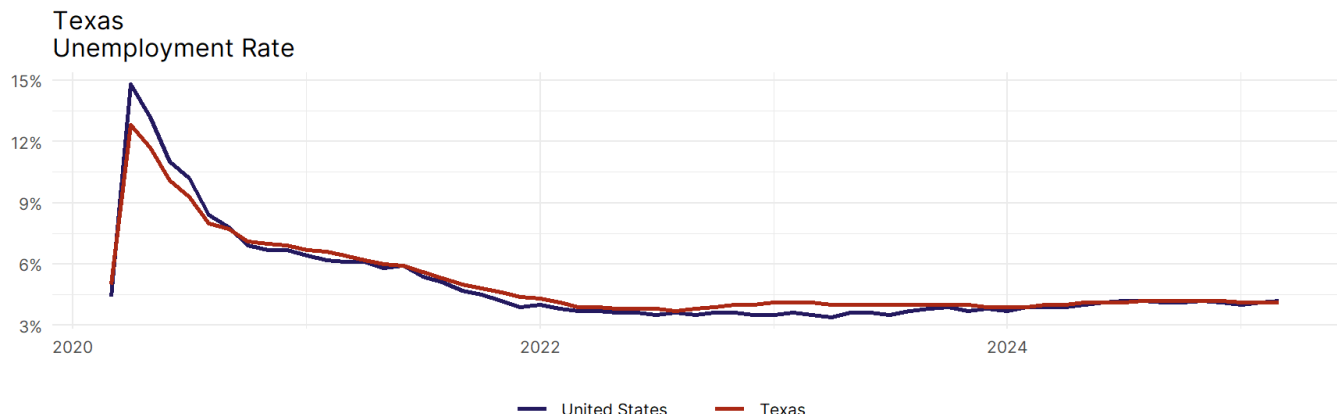
March 2025 | Released April 18, 2025

United States Employment Snapshot

- In March, among the 50 states and the District of Columbia **unemployment fell in 15, rose in 17, and remained unchanged in 19.**
- The highest unemployment rate was 5.7 percent in **Nevada**, and the lowest was 1.8 percent in **South Dakota**. Nationally, the unemployment rate rose by 0.1 percentage point to 4.2 percent.
- In March, **payroll jobs rose in 38 states and fell in 12.** The largest payroll job percent increase was 0.5 percent in **Missouri**. The largest payroll job percent decline was 0.3 percent in **Connecticut**.

Texas Employment Snapshot

- In March, **Texas added 26,500 net payroll jobs** and the **unemployment rate remained unchanged at 4.1 percent**. In the prior month, Texas added 22,000 net payroll jobs.
- Over the past 12 months, **Texas added 192,100 net payroll jobs** and the **unemployment rate rose by 0.1 percentage point from 4 percent**.
- Nationally, nonfarm payrolls **rose by 228,000 in March, or 0.1 percent**. Texas is **tied for 5th** in the nation for percentage gain in nonfarm payroll employment over the past 12 months.
- In March, **Texas's private sector added 23,200 net private payroll jobs**, and over the past 12 months it added 155,700 private payroll jobs. In the prior month, Texas added 18,900 net private payroll jobs.
- In March, employment in Texas **rose by 10,809**, and over the past 12 months it rose by 275,744.
- **Texas's labor force participation rate remained steady at 64.8 percent** in March and **ranks 19th** in the nation. In the past 12 months, the labor force participation rate has remained unchanged.

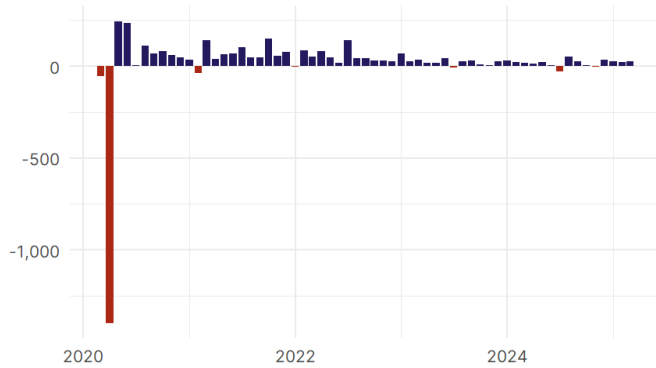


Source: Bureau of Labor Statistics, data is seasonally adjusted

Texas Payroll Employment

Texas Nonfarm Payroll Jobs

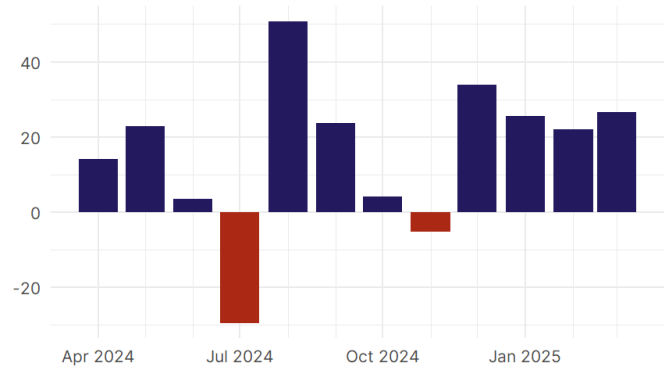
Monthly change, past five years (thousands)



Source: Bureau of Labor Statistics, data is seasonally adjusted

Texas Nonfarm Payroll Jobs

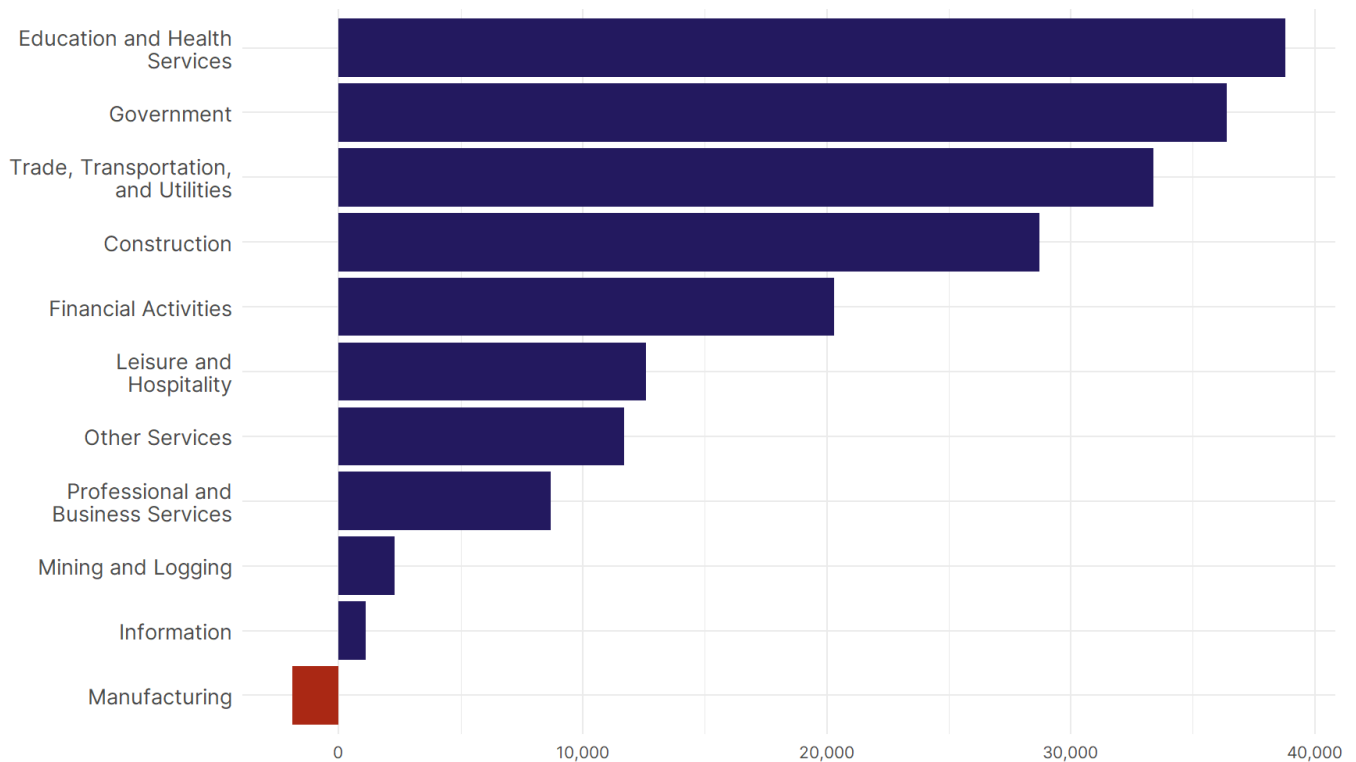
Monthly change, past 12 months (thousands)



Source: Bureau of Labor Statistics, data is seasonally adjusted

- **Texas added 26,500 net payroll jobs, or 0.2 percent,** on a seasonally adjusted basis during March. In the prior month, Texas added 22,000 jobs. Texas nonfarm payroll employment has increased in **10 of the past 12 months.**
- Nationally, nonfarm payrolls **rose by 228,000 in March, or 0.1 percent.** Texas is tied for 5th in the nation for percentage gain in nonfarm payroll employment over the past 12 months.
- **Texas added 23,200 private sector jobs, or 0.2 percent,** on a seasonally adjusted basis during March. In the prior month, Texas added 18,900 jobs. Texas private sector payroll employment has increased in **10 of the past 12 months.**
- Nationally, private sector payroll jobs **rose by 209,000 jobs in March, or 0.2 percent.** Texas is tied for 9th in the nation for percentage gain in private sector payroll employment over the past 12 months.

Change in Texas Payroll Employment by Sector over past 12 months



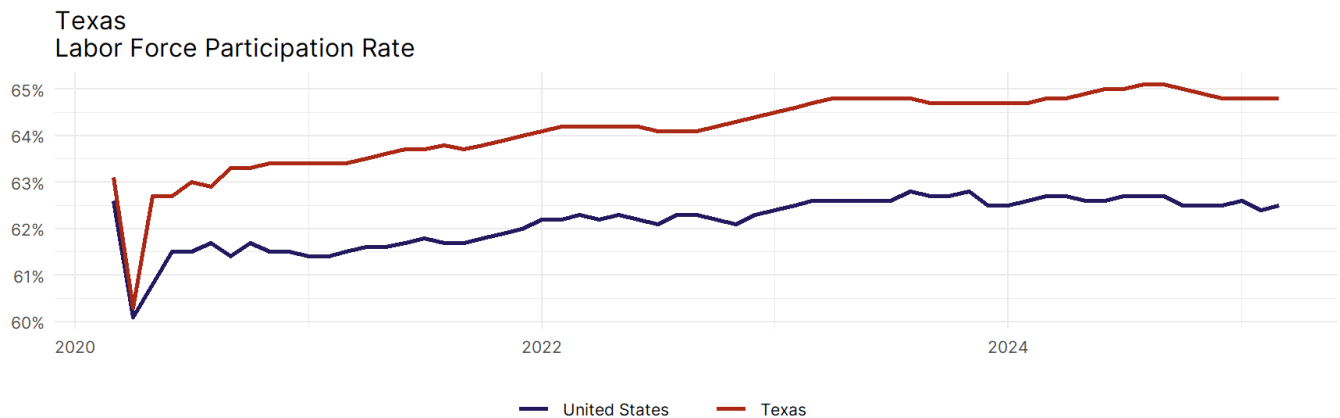
Source: Bureau of Labor Statistics, data is seasonally adjusted

- The best performing sectors on a seasonally adjusted basis during March were **Education and Health Services (9,500)** and **Construction (8,500)**.
- The poorest performing sectors during the month were **Professional and Business Services (-1,000)** and **Leisure and Hospitality (-1,100)**.
- The best performing sectors during the last 12 months were **Education and Health Services (38,800)** and **Government (36,400)**.
- The poorest performing sectors during the last 12 months were **Information (1,100)** and **Manufacturing (-1,900)**.

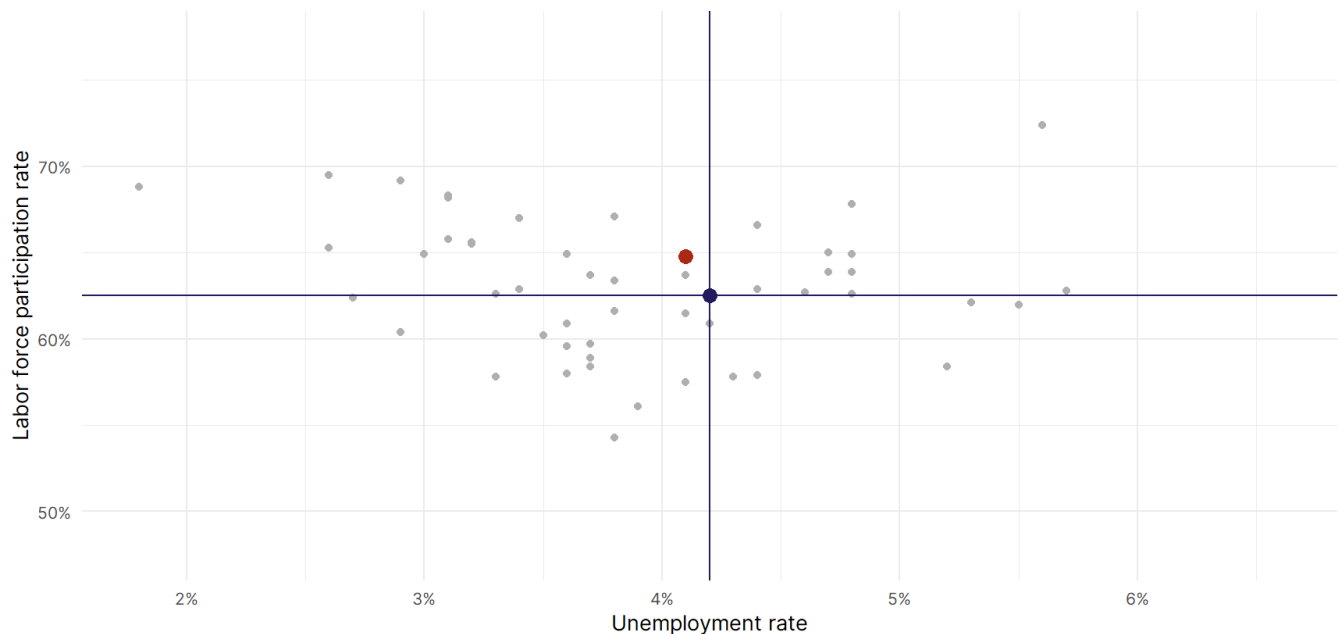
Texas Labor Force

The labor force participation rate is the percentage of the civilian noninstitutionalized population age 16 and older who are employed or actively looking for work.

- The labor force participation rate in **Texas remained unchanged at 64.8 percent in March**.
- **Texas ranks 19th** in the nation.
- The 10-year high for the labor force participation rate in Texas was **65.1 percent** occurring in September 2024, and the 10-year low was **60.3 percent** in April 2020.
- The national labor force participation rate **rose by 0.1 percentage points to 62.5 percent** in March.



Source: Bureau of Labor Statistics, data is seasonally adjusted



Source: Bureau of Labor Statistics, data is seasonally adjusted