



United States Congress

Joint Economic Committee

Est. 1946

Republicans

Representative David Schweikert, *Chairman*



Utah

Employment Update



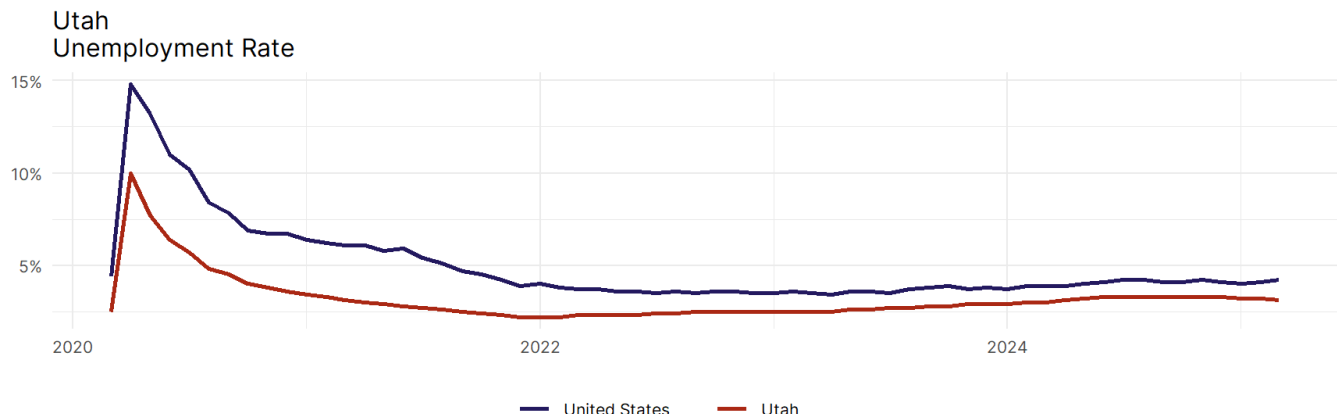
March 2025 | Released April 18, 2025

United States Employment Snapshot

- In March, among the 50 states and the District of Columbia **unemployment fell in 15, rose in 17, and remained unchanged in 19.**
- The highest unemployment rate was 5.7 percent in **Nevada**, and the lowest was 1.8 percent in **South Dakota**. Nationally, the unemployment rate rose by 0.1 percentage point to 4.2 percent.
- In March, **payroll jobs rose in 38 states and fell in 12.** The largest payroll job percent increase was 0.5 percent in **Missouri**. The largest payroll job percent decline was 0.3 percent in **Connecticut**.

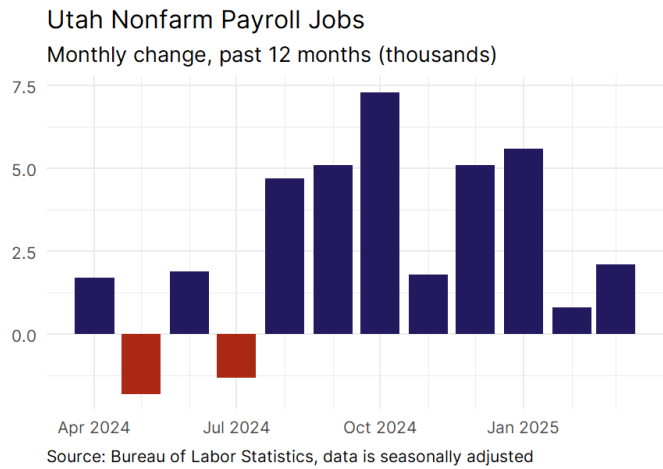
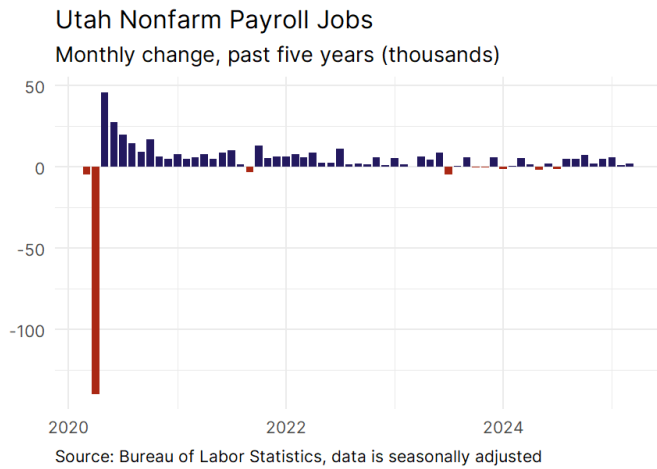
Utah Employment Snapshot

- In March, **Utah added 2,100 net payroll jobs** and the **unemployment rate fell by 0.1 percentage point to 3.1 percent.** In the prior month, Utah added 800 net payroll jobs.
- Over the past 12 months, **Utah added 33,000 net payroll jobs** and the **unemployment rate rose by 0.1 percentage point from 3 percent.**
- Nationally, nonfarm payrolls **rose by 228,000 in March, or 0.1 percent.** Utah **ranks 3rd** in the nation for percentage gain in nonfarm payroll employment over the past 12 months.
- In March, **Utah's private sector added 1,200 net private payroll jobs**, and over the past 12 months it added 22,400 private payroll jobs. In the prior month, Utah lost 300 net private payroll jobs.
- In March, employment in Utah **rose by 2,049**, and over the past 12 months it rose by 21,723.
- **Utah's labor force participation rate fell to 68.3 percent** in March from 68.4 percent and **ranks 5th** in the nation. In the past 12 months, the labor force participation rate has fallen by 0.6 percentage points.

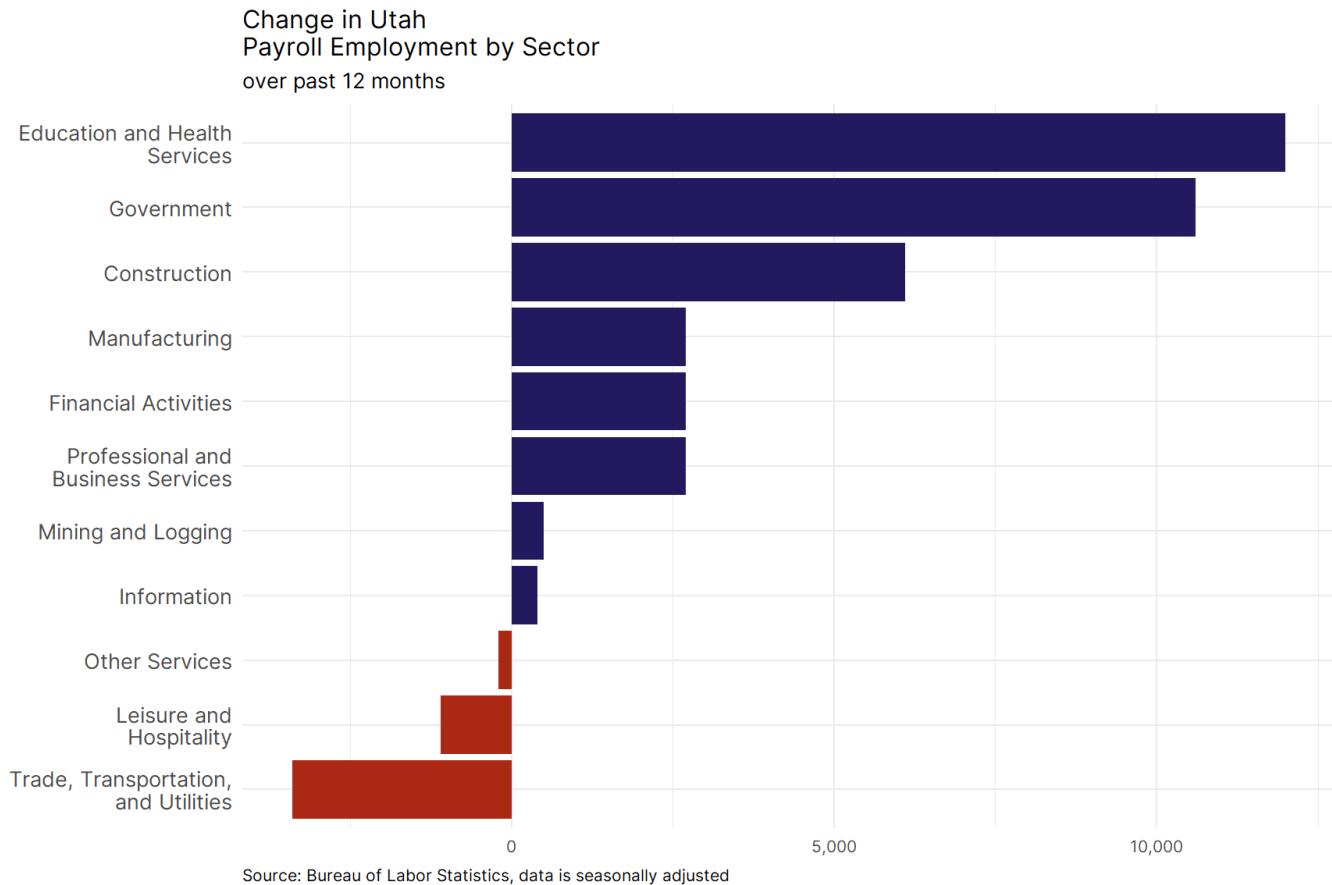


Source: Bureau of Labor Statistics, data is seasonally adjusted

Utah Payroll Employment



- **Utah added 2,100 net payroll jobs, or 0.1 percent,** on a seasonally adjusted basis during March. In the prior month, Utah added 800 jobs. Utah nonfarm payroll employment has increased in **10 of the past 12 months**.
- Nationally, nonfarm payrolls **rose by 228,000 in March, or 0.1 percent**. Utah ranks 3rd in the nation for percentage gain in nonfarm payroll employment over the past 12 months.
- **Utah added 1,200 private sector jobs, or 0.1 percent,** on a seasonally adjusted basis during March. In the prior month, Utah lost 300 jobs. Utah private sector payroll employment has increased in **8 of the past 12 months**.
- Nationally, private sector payroll jobs **rose by 209,000 jobs in March, or 0.2 percent**. Utah is tied for 5th in the nation for percentage gain in private sector payroll employment over the past 12 months.



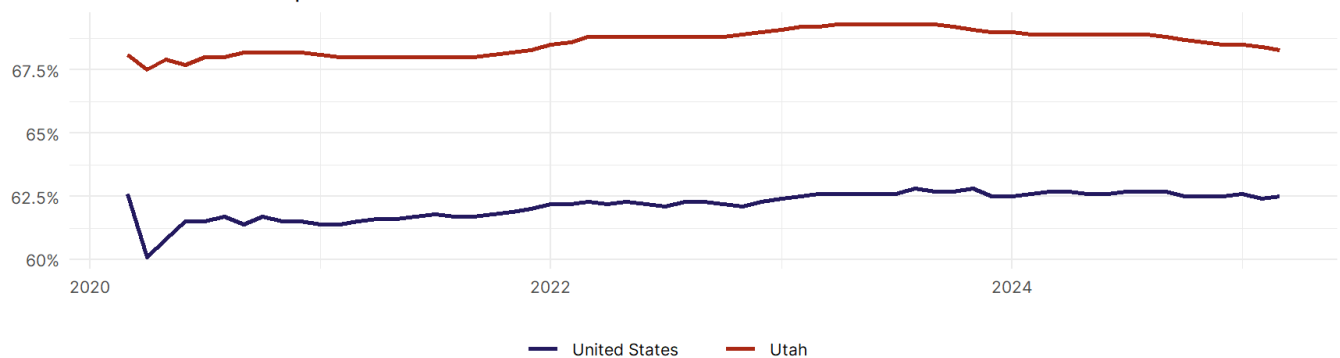
- The best performing sectors on a seasonally adjusted basis during March were **Professional and Business Services (1,400)** and **Leisure and Hospitality (1,000)**.
- The poorest performing sectors during the month were **Trade, Transportation, and Utilities (-600)** and **Education and Health Services (-800)**.
- The best performing sectors during the last 12 months were **Education and Health Services (12,000)** and **Government (10,600)**.
- The poorest performing sectors during the last 12 months were **Leisure and Hospitality (-1,100)** and **Trade, Transportation, and Utilities (-3,400)**.

Utah Labor Force

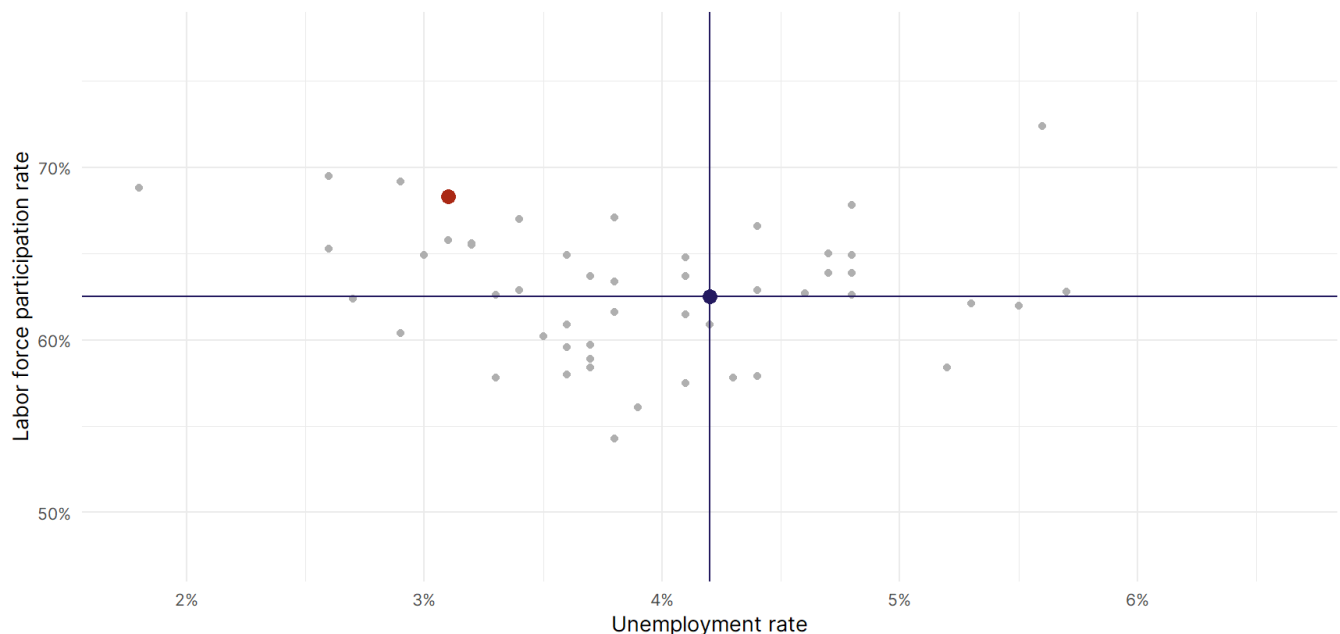
The labor force participation rate is the percentage of the civilian noninstitutionalized population age 16 and older who are employed or actively looking for work.

- The labor force participation rate in **Utah fell to 68.3 percent in March from 68.4 percent in the prior month.**
- **Utah ranks 5th** in the nation.
- The 10-year high for the labor force participation rate in Utah was **69.3 percent** occurring in September 2023, and the 10-year low was **67.5 percent** in April 2020.
- The national labor force participation rate **rose by 0.1 percentage points to 62.5 percent** in March.

Utah
Labor Force Participation Rate



Source: Bureau of Labor Statistics, data is seasonally adjusted



Source: Bureau of Labor Statistics, data is seasonally adjusted