



United States Congress

Joint Economic Committee

Est. 1946

Republicans

Representative David Schweikert, *Chairman*



Vermont Employment Update



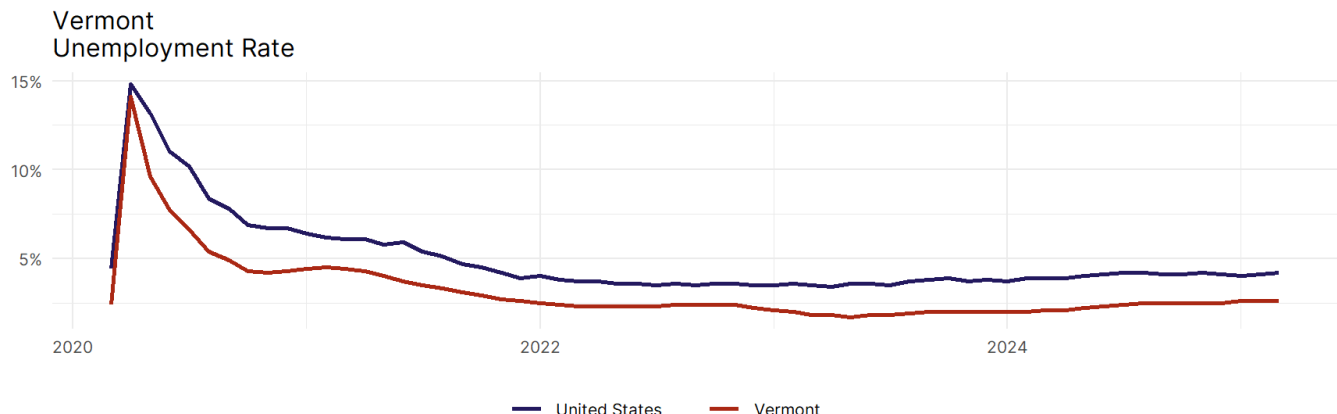
March 2025 | Released April 18, 2025

United States Employment Snapshot

- In March, among the 50 states and the District of Columbia **unemployment fell in 15, rose in 17, and remained unchanged in 19.**
- The highest unemployment rate was 5.7 percent in **Nevada**, and the lowest was 1.8 percent in **South Dakota**. Nationally, the unemployment rate rose by 0.1 percentage point to 4.2 percent.
- In March, **payroll jobs rose in 38 states and fell in 12.** The largest payroll job percent increase was 0.5 percent in **Missouri**. The largest payroll job percent decline was 0.3 percent in **Connecticut**.

Vermont Employment Snapshot

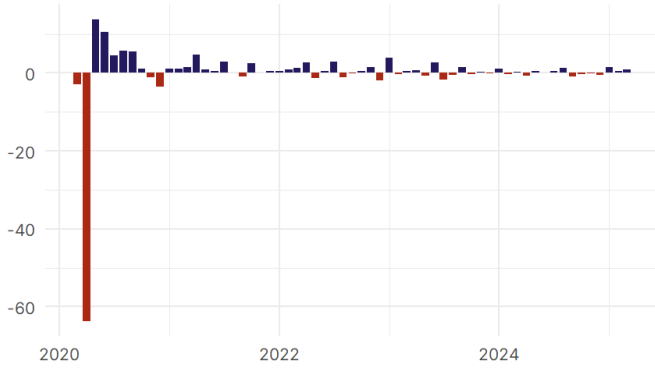
- In March, **Vermont added 900 net payroll jobs** and the **unemployment rate remained unchanged at 2.6 percent**. In the prior month, Vermont added 500 net payroll jobs.
- Over the past 12 months, **Vermont added 2,400 net payroll jobs** and the **unemployment rate rose by 0.5 percentage points from 2.1 percent**.
- Nationally, nonfarm payrolls **rose by 228,000 in March, or 0.1 percent**. Vermont **is tied for 24th** in the nation for percentage gain in nonfarm payroll employment over the past 12 months.
- In March, **Vermont's private sector added 900 net private payroll jobs**, and over the past 12 months it added 1,700 private payroll jobs. In the prior month, Vermont added 400 net private payroll jobs.
- In March, employment in Vermont **fell by 1,051**, and over the past 12 months it fell by 399.
- **Vermont's labor force participation rate fell to 65.3 percent** in March from 65.4 percent and **ranks 14th** in the nation. In the past 12 months, the labor force participation rate has risen by 0.2 percentage points.



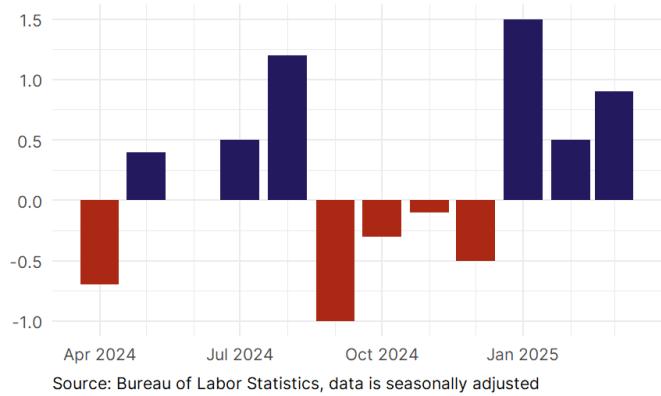
Source: Bureau of Labor Statistics, data is seasonally adjusted

Vermont Payroll Employment

Vermont Nonfarm Payroll Jobs
Monthly change, past five years (thousands)

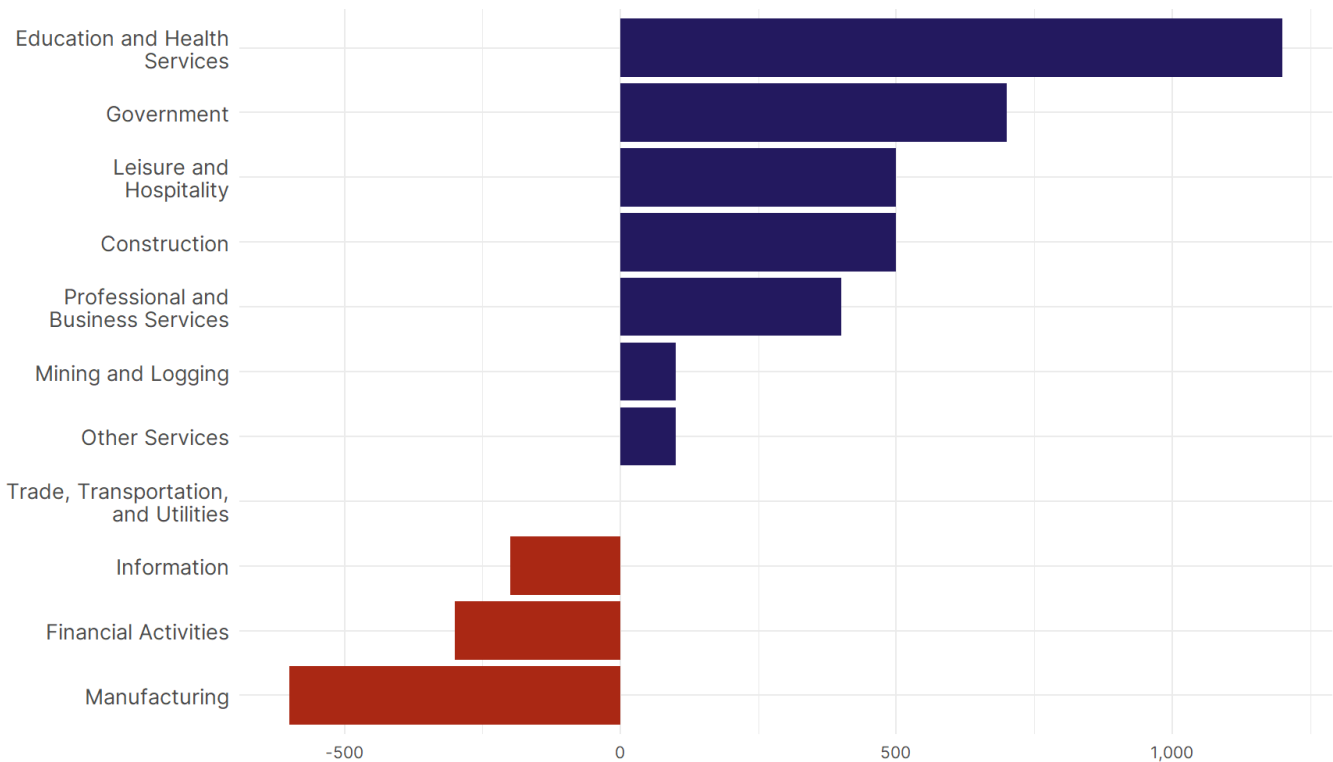


Vermont Nonfarm Payroll Jobs
Monthly change, past 12 months (thousands)



- **Vermont added 900 net payroll jobs, or 0.3 percent,** on a seasonally adjusted basis during March. In the prior month, Vermont added 500 jobs. Vermont nonfarm payroll employment has increased in **6 of the past 12 months.**
- Nationally, nonfarm payrolls **rose by 228,000 in March, or 0.1 percent.** Vermont is tied for 24th in the nation for percentage gain in nonfarm payroll employment over the past 12 months.
- **Vermont added 900 private sector jobs, or 0.4 percent,** on a seasonally adjusted basis during March. In the prior month, Vermont added 400 jobs. Vermont private sector payroll employment has increased in **6 of the past 12 months.**
- Nationally, private sector payroll jobs **rose by 209,000 jobs in March, or 0.2 percent.** Vermont is tied for 26th in the nation for percentage gain in private sector payroll employment over the past 12 months.

Change in Vermont
Payroll Employment by Sector
over past 12 months

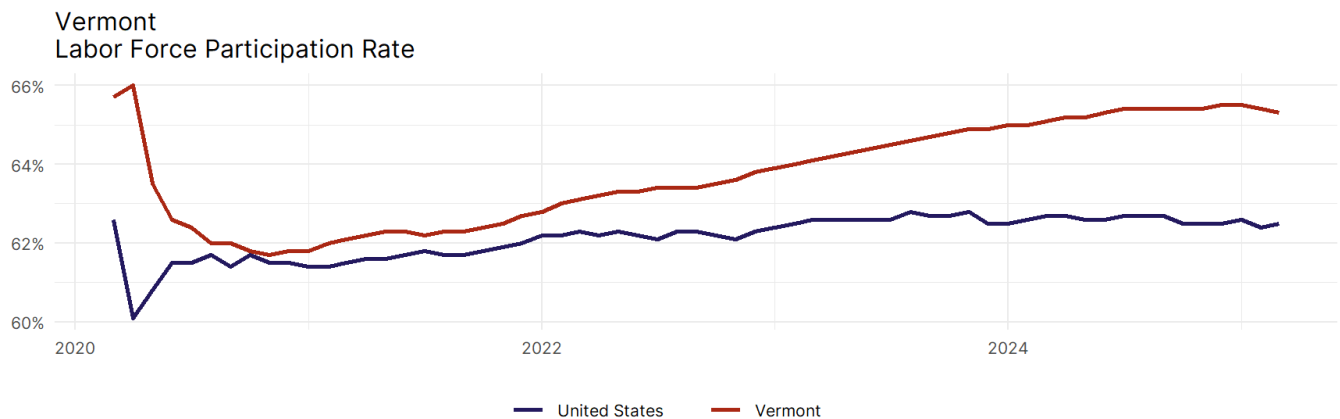


- The best performing sectors on a seasonally adjusted basis during March were **Professional and Business Services (500)** and **Trade, Transportation, and Utilities (300)**.
- The poorest performing sectors during the month were **Information tied with Financial Activities (-100)** and **Other Services (-200)**.
- The best performing sectors during the last 12 months were **Education and Health Services (1,200)** and **Government (700)**.
- The poorest performing sectors during the last 12 months were **Financial Activities (-300)** and **Manufacturing (-600)**.

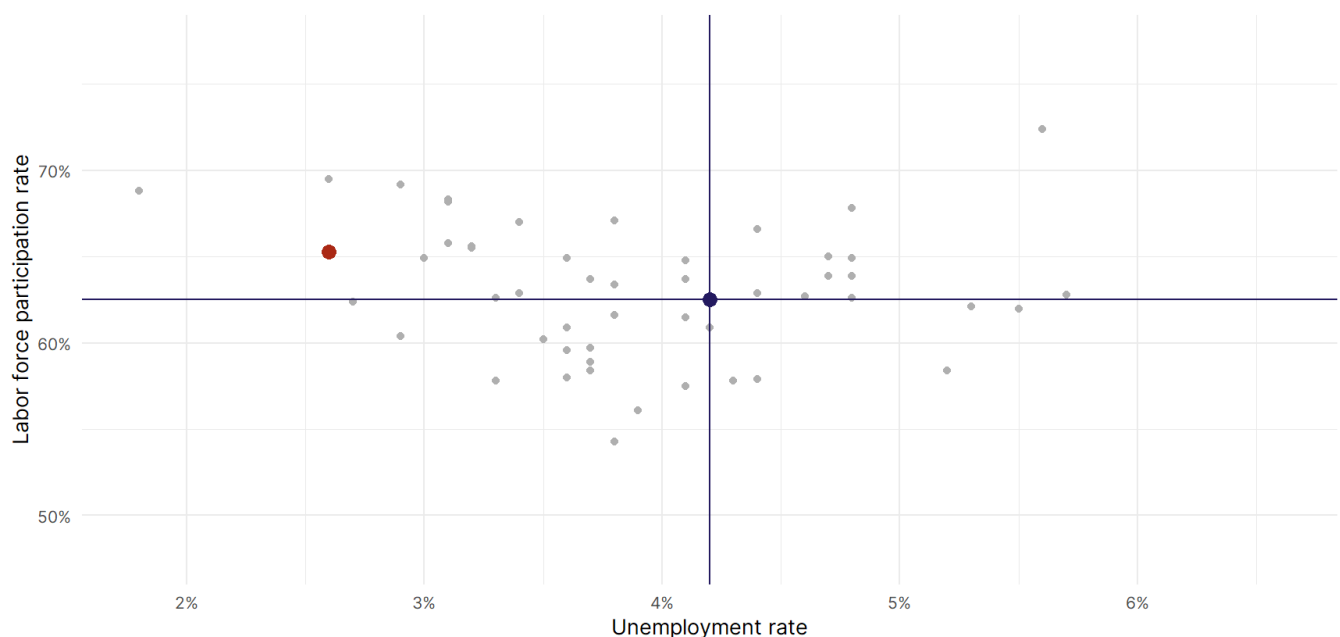
Vermont Labor Force

The labor force participation rate is the percentage of the civilian noninstitutionalized population age 16 and older who are employed or actively looking for work.

- The labor force participation rate in **Vermont fell to 65.3 percent in March from 65.4 percent in the prior month**.
- **Vermont ranks 14th** in the nation.
- The 10-year high for the labor force participation rate in Vermont was **67.7 percent** in March 2015, and the 10-year low was **61.7 percent** in November 2020.
- The national labor force participation rate **rose by 0.1 percentage points to 62.5 percent** in March.



Source: Bureau of Labor Statistics, data is seasonally adjusted



Source: Bureau of Labor Statistics, data is seasonally adjusted