



United States Congress

Joint Economic Committee

Est. 1946

Republicans

Representative David Schweikert, *Chairman*



Washington Employment Update



March 2025 | Released April 18, 2025

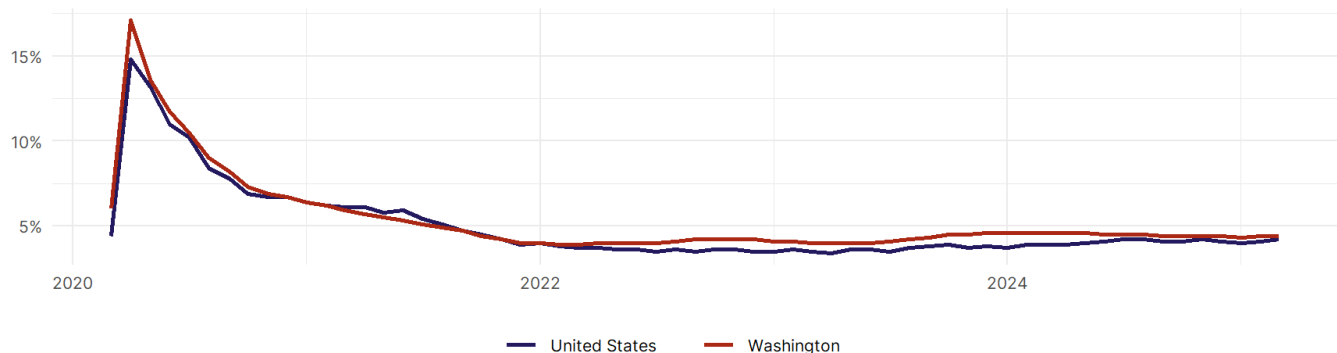
United States Employment Snapshot

- In March, among the 50 states and the District of Columbia **unemployment fell in 15, rose in 17, and remained unchanged in 19.**
- The highest unemployment rate was 5.7 percent in **Nevada**, and the lowest was 1.8 percent in **South Dakota**. Nationally, the unemployment rate rose by 0.1 percentage point to 4.2 percent.
- In March, **payroll jobs rose in 38 states and fell in 12.** The largest payroll job percent increase was 0.5 percent in **Missouri**. The largest payroll job percent decline was 0.3 percent in **Connecticut**.

Washington Employment Snapshot

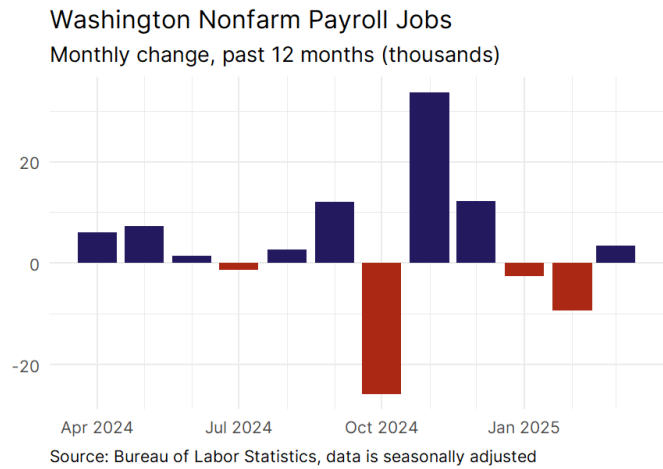
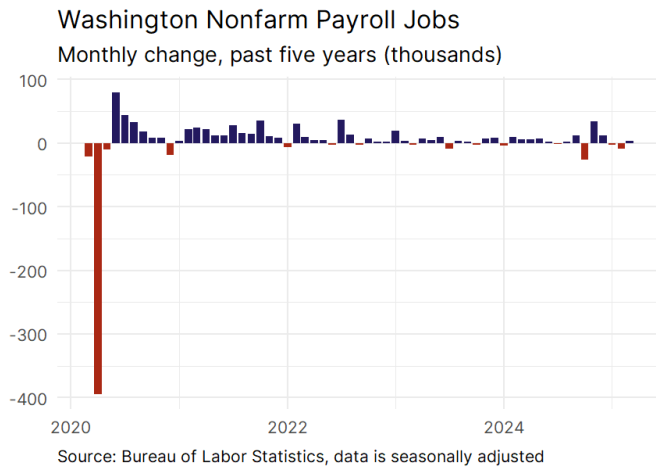
- In March, **Washington added 3,400 net payroll jobs** and the **unemployment rate remained unchanged at 4.4 percent.** In the prior month, Washington lost 9,300 net payroll jobs.
- Over the past 12 months, **Washington added 40,000 net payroll jobs** and the **unemployment rate fell by 0.2 percentage points from 4.6 percent.**
- Nationally, nonfarm payrolls **rose by 228,000 in March, or 0.1 percent.** Washington **is tied for 15th** in the nation for percentage gain in nonfarm payroll employment over the past 12 months.
- In March, **Washington's private sector added 5,200 net private payroll jobs**, and over the past 12 months it added 32,600 private payroll jobs. In the prior month, Washington lost 7,800 net private payroll jobs.
- In March, employment in Washington **fell by 5,248**, and over the past 12 months it rose by 11,542.
- **Washington's labor force participation rate fell to 62.9 percent** in March from 63 percent and **is tied for 25th** in the nation. In the past 12 months, the labor force participation rate has fallen by 0.8 percentage points.

Washington
Unemployment Rate

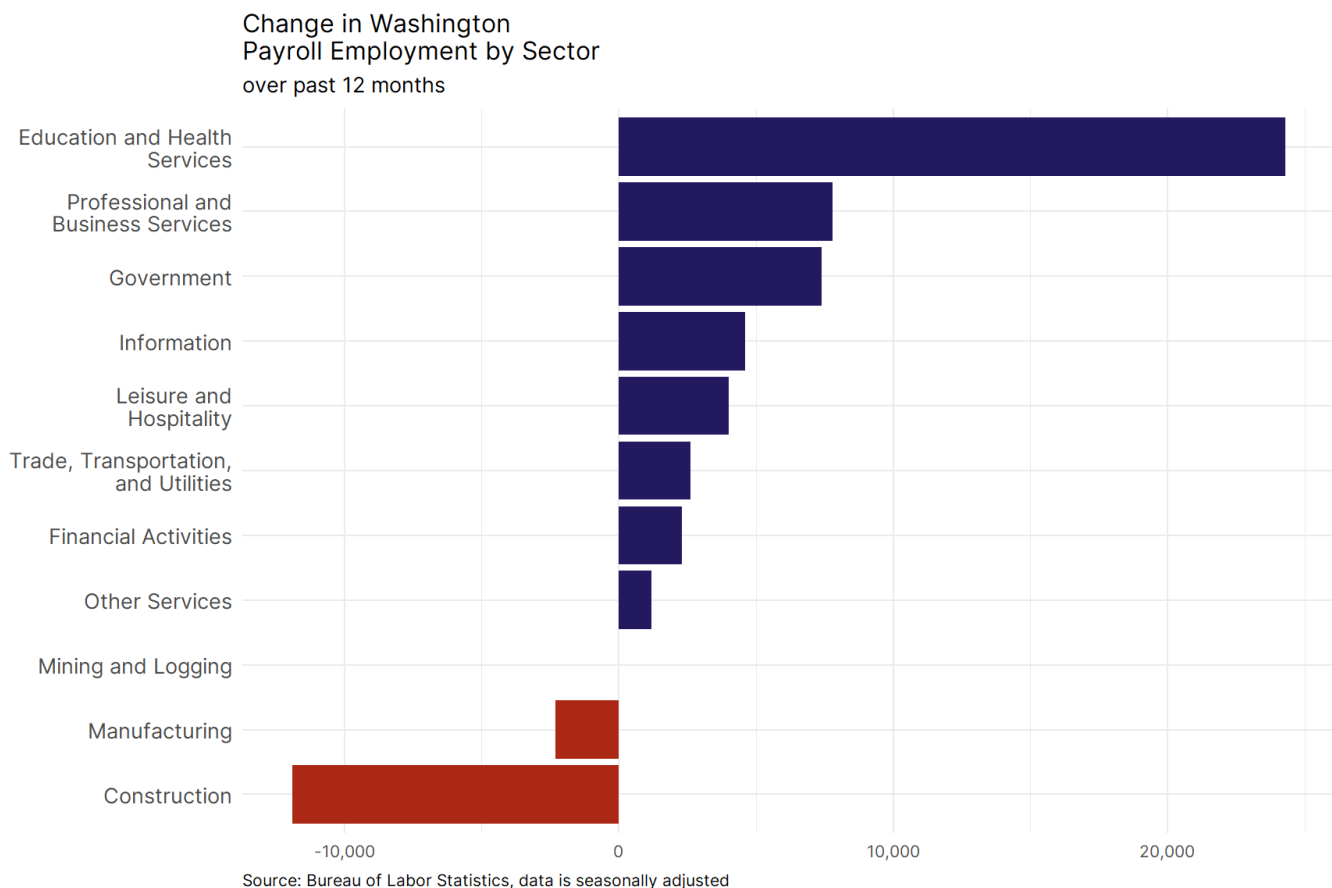


Source: Bureau of Labor Statistics, data is seasonally adjusted

Washington Payroll Employment



- **Washington added 3,400 net payroll jobs, or 0.1 percent,** on a seasonally adjusted basis during March. In the prior month, Washington lost 9,300 jobs. Washington nonfarm payroll employment has increased in **8 of the past 12 months**.
- Nationally, nonfarm payrolls **rose by 228,000 in March, or 0.1 percent**. Washington is tied for 15th in the nation for percentage gain in nonfarm payroll employment over the past 12 months.
- **Washington added 5,200 private sector jobs, or 0.2 percent,** on a seasonally adjusted basis during March. In the prior month, Washington lost 7,800 jobs. Washington private sector payroll employment has increased in **8 of the past 12 months**.
- Nationally, private sector payroll jobs **rose by 209,000 jobs in March, or 0.2 percent**. Washington is tied for 13th in the nation for percentage gain in private sector payroll employment over the past 12 months.

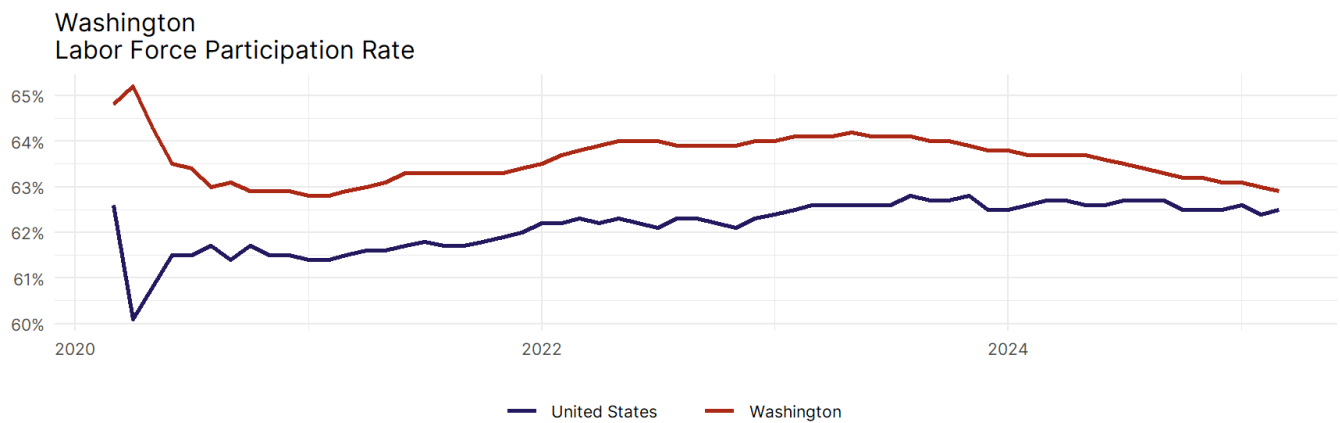


- The best performing sectors on a seasonally adjusted basis during March were **Leisure and Hospitality (1,400)** and **Information (1,100)**.
- The poorest performing sectors during the month were **Mining and Logging (-100)** and **Government (-1,800)**.
- The best performing sectors during the last 12 months were **Education and Health Services (24,300)** and **Professional and Business Services (7,800)**.
- The poorest performing sectors during the last 12 months were **Manufacturing (-2,300)** and **Construction (-11,900)**.

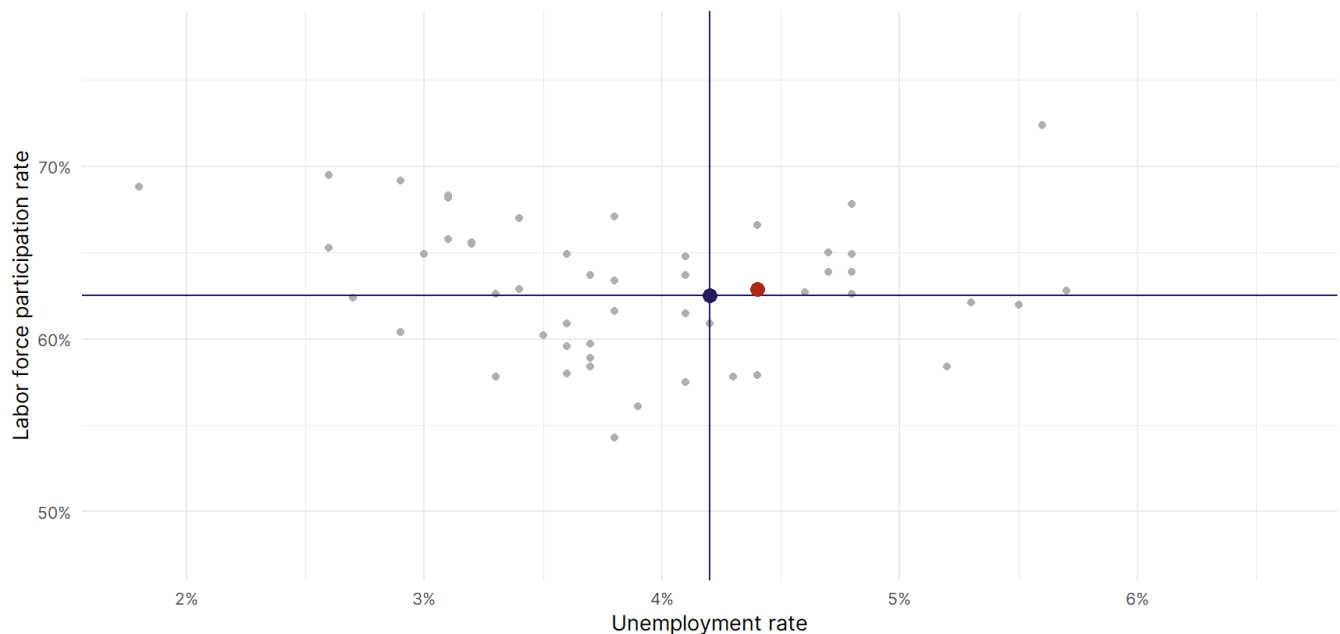
Washington Labor Force

The labor force participation rate is the percentage of the civilian noninstitutionalized population age 16 and older who are employed or actively looking for work.

- The labor force participation rate in **Washington fell to 62.9 percent in March from 63 percent in the prior month.**
- **Washington is tied for 25th** in the nation.
- The 10-year high for the labor force participation rate in Washington was **65.9 percent** in November 2019, and the 10-year low was **62.8 percent** occurring in February 2021.
- The national labor force participation rate **rose by 0.1 percentage points to 62.5 percent** in March.



Source: Bureau of Labor Statistics, data is seasonally adjusted



Source: Bureau of Labor Statistics, data is seasonally adjusted