



United States Congress

# Joint Economic Committee

Est. 1946

Republicans

Representative David Schweikert, *Chairman*



## Wyoming Employment Update



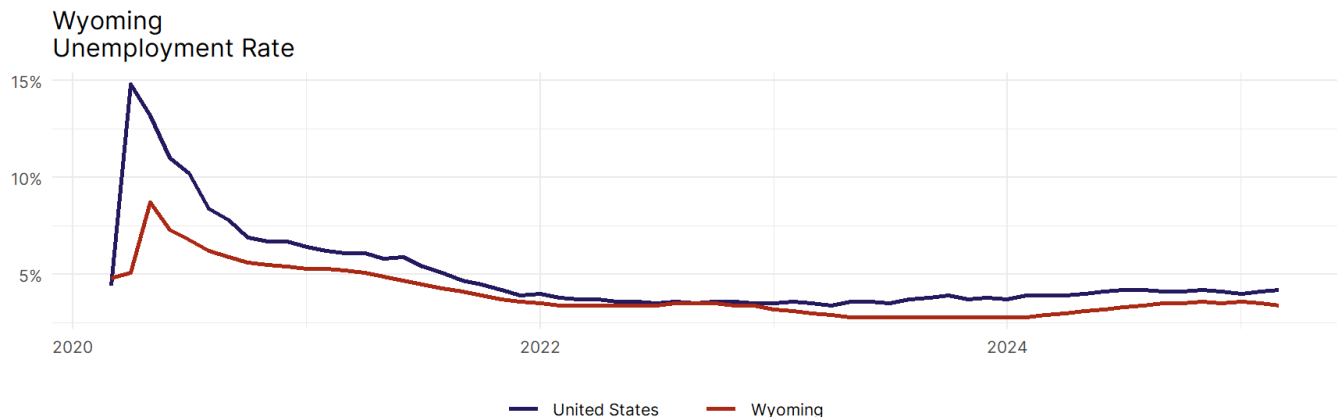
March 2025 | Released April 18, 2025

### United States Employment Snapshot

- In March, among the 50 states and the District of Columbia **unemployment fell in 15, rose in 17, and remained unchanged in 19.**
- The highest unemployment rate was 5.7 percent in **Nevada**, and the lowest was 1.8 percent in **South Dakota**. Nationally, the unemployment rate rose by 0.1 percentage point to 4.2 percent.
- In March, **payroll jobs rose in 38 states and fell in 12.** The largest payroll job percent increase was 0.5 percent in **Missouri**. The largest payroll job percent decline was 0.3 percent in **Connecticut**.

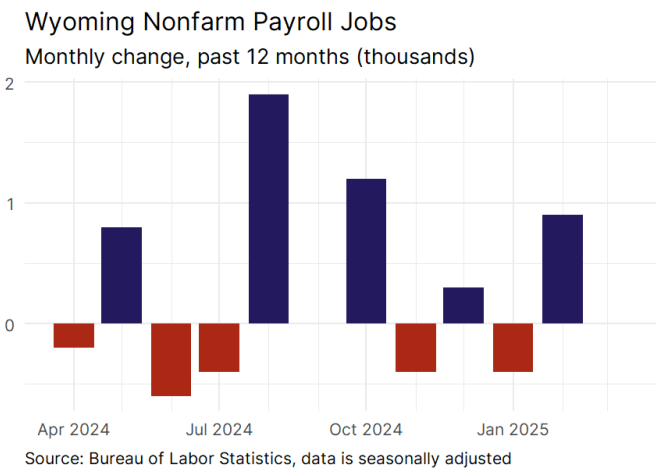
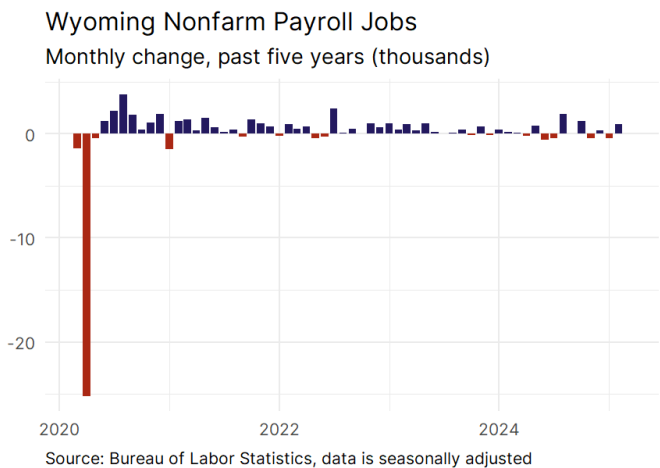
### Wyoming Employment Snapshot

- In March, **Wyoming remained unchanged with 0 net payroll jobs** and the **unemployment rate fell by 0.1 percentage point to 3.4 percent.** In the prior month, Wyoming added 900 net payroll jobs.
- Over the past 12 months, **Wyoming added 3,100 net payroll jobs** and the **unemployment rate rose by 0.5 percentage points from 2.9 percent.**
- Nationally, nonfarm payrolls **rose by 228,000 in March, or 0.1 percent.** Wyoming **is tied for 15th** in the nation for percentage gain in nonfarm payroll employment over the past 12 months.
- In March, **Wyoming's private sector lost 100 net private payroll jobs**, and over the past 12 months it added 2,100 private payroll jobs. In the prior month, Wyoming added 100 net private payroll jobs.
- In March, employment in Wyoming **fell by 848**, and over the past 12 months it fell by 1,770.
- **Wyoming's labor force participation rate fell to 62.9 percent** in March from 63.1 percent and **is tied for 25th** in the nation. In the past 12 months, the labor force participation rate has fallen by 0.6 percentage points.

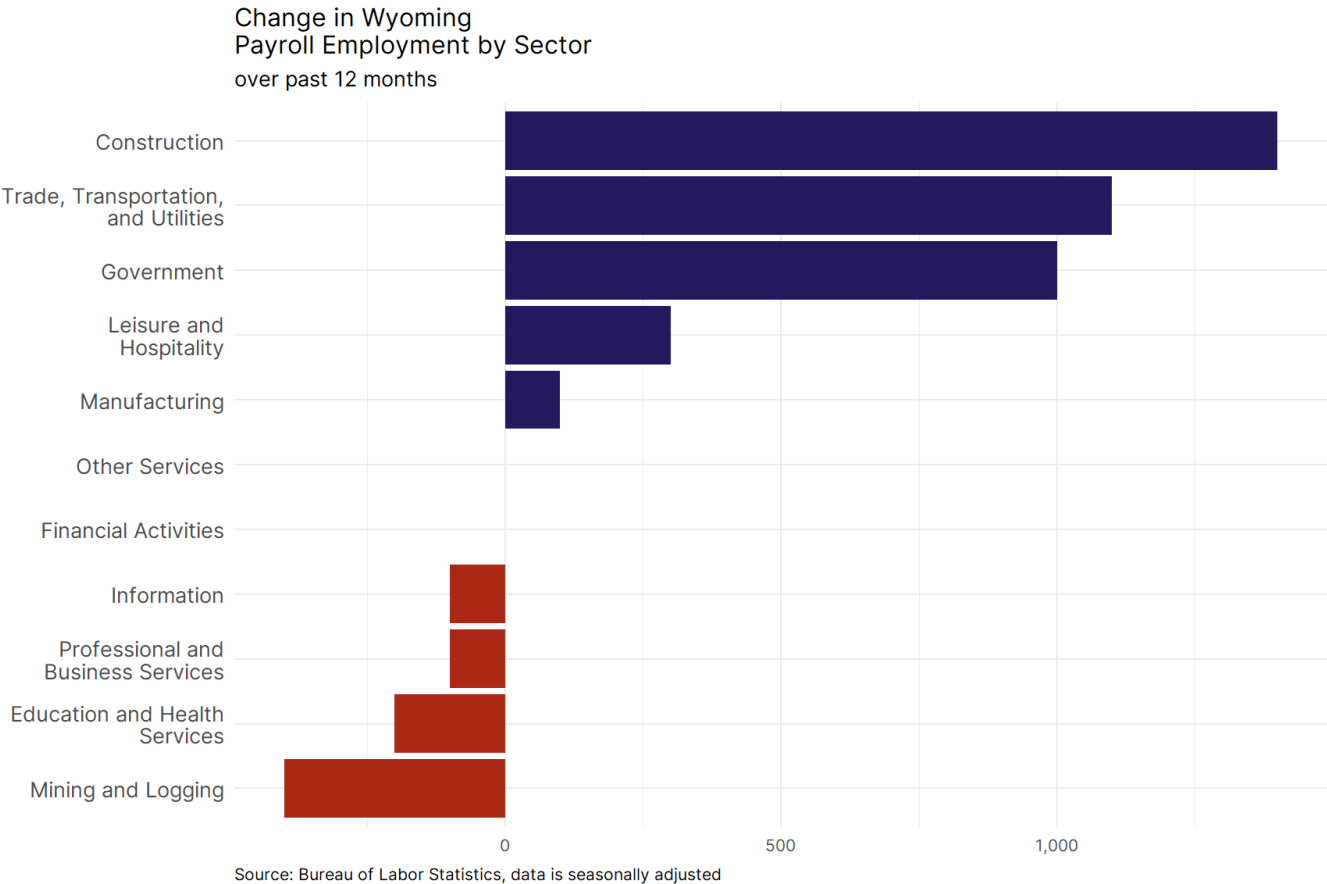


Source: Bureau of Labor Statistics, data is seasonally adjusted

# Wyoming Payroll Employment



- **Wyoming remained unchanged with 0 net payroll jobs, or 0 percent**, on a seasonally adjusted basis during March. In the prior month, Wyoming added 900 jobs. Wyoming nonfarm payroll employment has increased in **5 of the past 12 months**.
- Nationally, nonfarm payrolls **rose by 228,000 in March, or 0.1 percent**. Wyoming is tied for 15th in the nation for percentage gain in nonfarm payroll employment over the past 12 months.
- **Wyoming lost 100 private sector jobs, or 0 percent**, on a seasonally adjusted basis during March. In the prior month, Wyoming added 100 jobs. Wyoming private sector payroll employment has increased in **6 of the past 12 months**.
- Nationally, private sector payroll jobs **rose by 209,000 jobs in March, or 0.2 percent**. Wyoming is tied for 19th in the nation for percentage gain in private sector payroll employment over the past 12 months.



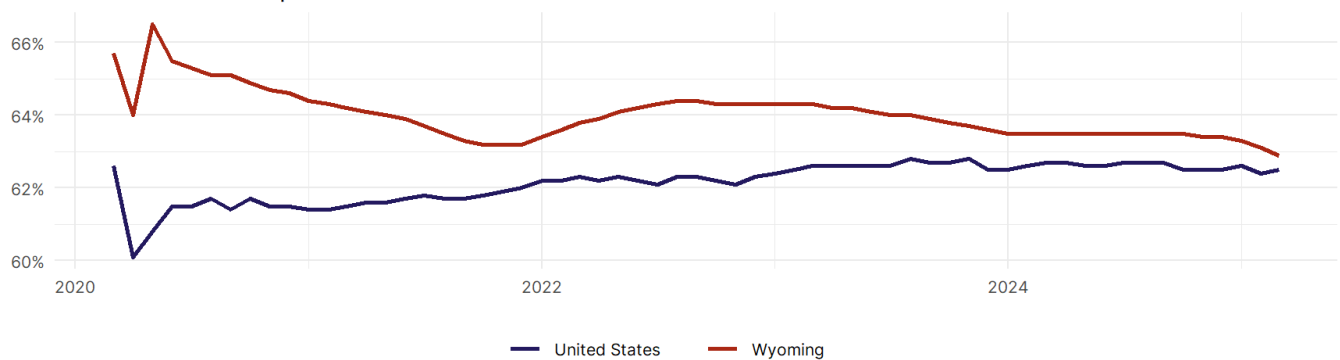
- The best performing sectors on a seasonally adjusted basis during March were **Other Services (200)** and **Trade, Transportation, and Utilities (100)**.
- The poorest performing sectors during the month were **Leisure and Hospitality (-200)** and **Mining and Logging (-300)**.
- The best performing sectors during the last 12 months were **Construction (1,400)** and **Trade, Transportation, and Utilities (1,100)**.
- The poorest performing sectors during the last 12 months were **Education and Health Services (-200)** and **Mining and Logging (-400)**.

## Wyoming Labor Force

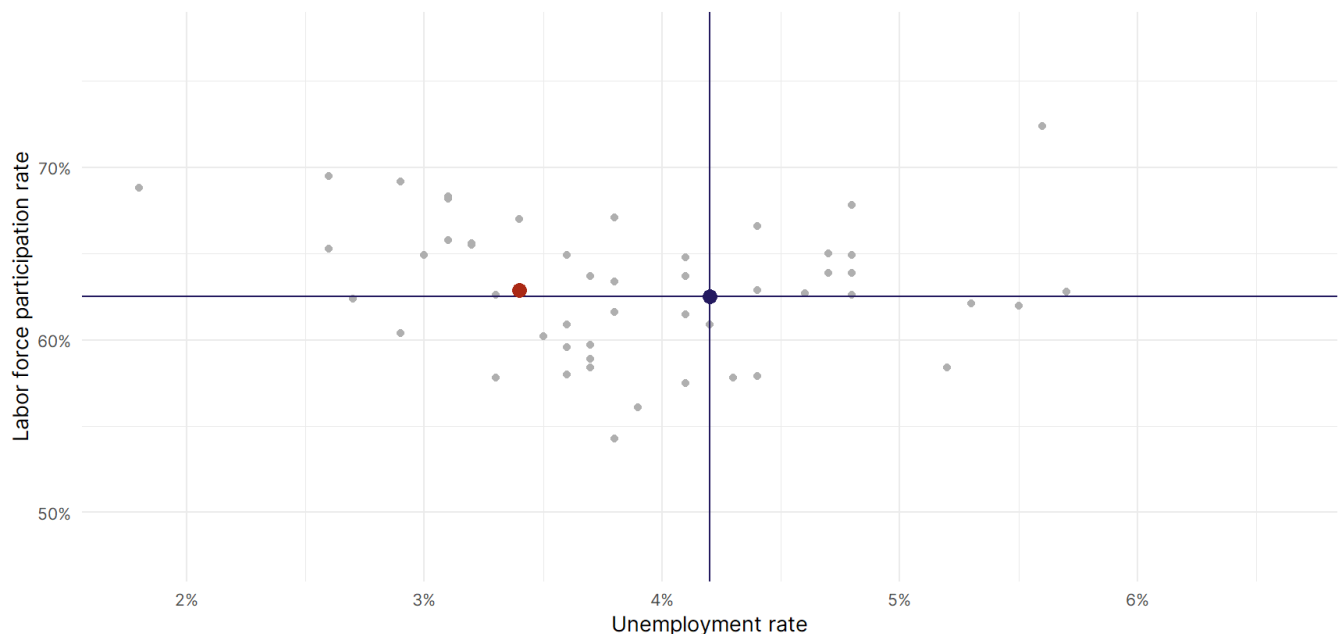
The labor force participation rate is the percentage of the civilian noninstitutionalized population age 16 and older who are employed or actively looking for work.

- The labor force participation rate in **Wyoming fell to 62.9 percent in March from 63.1 percent in the prior month**.
- **Wyoming is tied for 25th** in the nation.
- The 10-year high for the labor force participation rate in Wyoming was **67.2 percent** occurring in April 2015, and the 10-year low was **62.9 percent** in March 2025.
- The national labor force participation rate **rose by 0.1 percentage points to 62.5 percent** in March.

Wyoming  
Labor Force Participation Rate



Source: Bureau of Labor Statistics, data is seasonally adjusted



Source: Bureau of Labor Statistics, data is seasonally adjusted