



United States Congress

# Joint Economic Committee

Est. 1946

Republicans

Representative David Schweikert, *Chairman*



## Alabama Employment Update



April 2025 | Released May 21, 2025

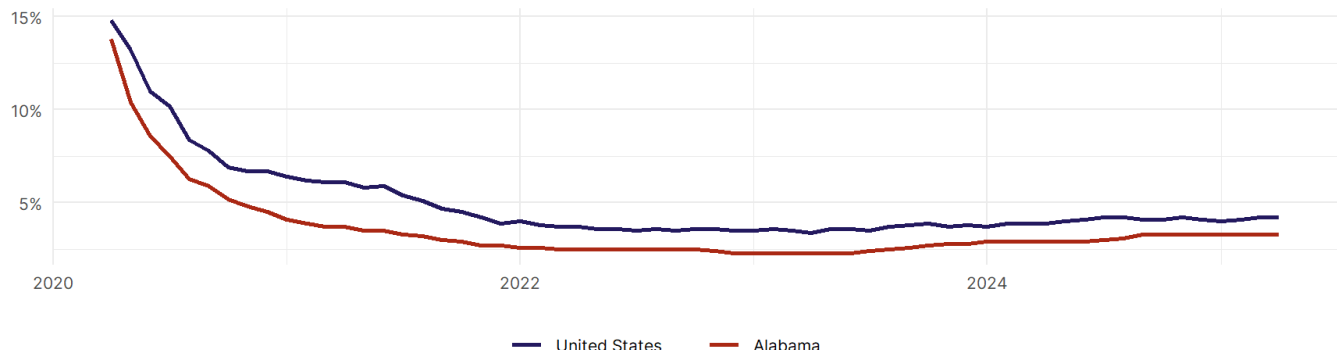
### United States Employment Snapshot

- In April, among the 50 states and the District of Columbia **unemployment fell in 5, rose in 20, and remained unchanged in 26.**
- The highest unemployment rate was 5.8 percent in **District of Columbia**, and the lowest was 1.8 percent in **South Dakota**. Nationally, the unemployment rate remained unchanged in April.
- In April, **payroll jobs rose in 40 states and fell in 11.** The largest payroll job percent increase was 0.4 percent in **Mississippi**. The largest payroll job percent decline was 0.2 percent in **Vermont**.

### Alabama Employment Snapshot

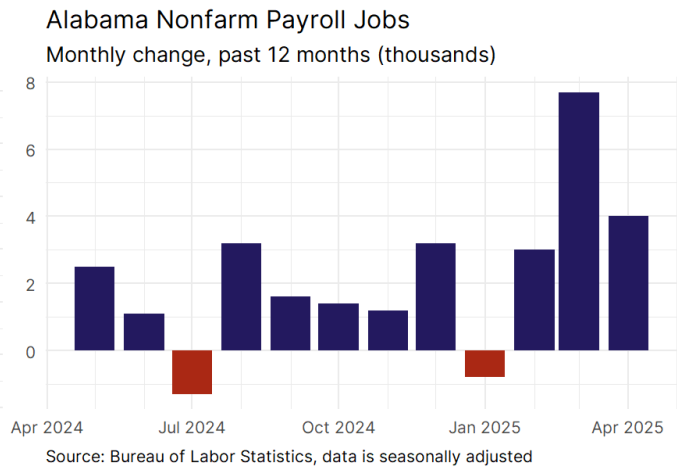
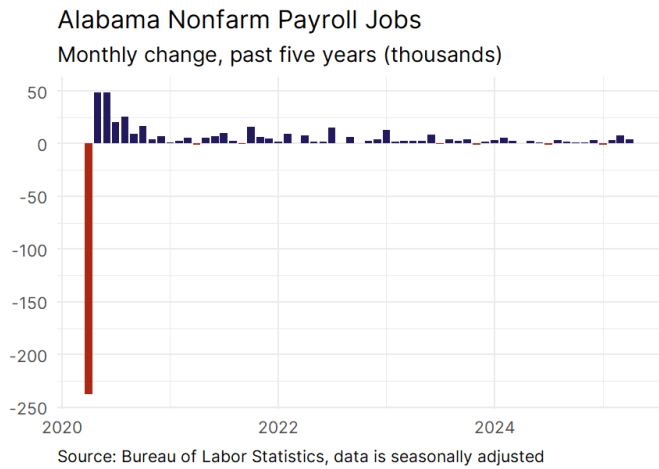
- In April, **Alabama added 4,000 net payroll jobs** and the **unemployment rate remained unchanged at 3.3 percent.** In the prior month, Alabama added 7,700 net payroll jobs.
- Over the past 12 months, **Alabama added 26,800 net payroll jobs** and the **unemployment rate rose by 0.4 percentage points from 2.9 percent.**
- Nationally, nonfarm payrolls **rose by 177,000 in April, or 0.1 percent.** Alabama **is tied for 17th** in the nation for percentage gain in nonfarm payroll employment over the past 12 months.
- In April, **Alabama's private sector added 3,700 net private payroll jobs**, and over the past 12 months it added 21,700 private payroll jobs. In the prior month, Alabama added 7,600 net private payroll jobs.
- In April, employment in Alabama **rose by 7,208**, and over the past 12 months it rose by 32,204.
- **Alabama's labor force participation rate rose to 57.9 percent** in April from 57.8 percent and **is tied for 46th** in the nation. In the past 12 months, the labor force participation rate has risen by 0.5 percentage points.

Alabama  
Unemployment Rate

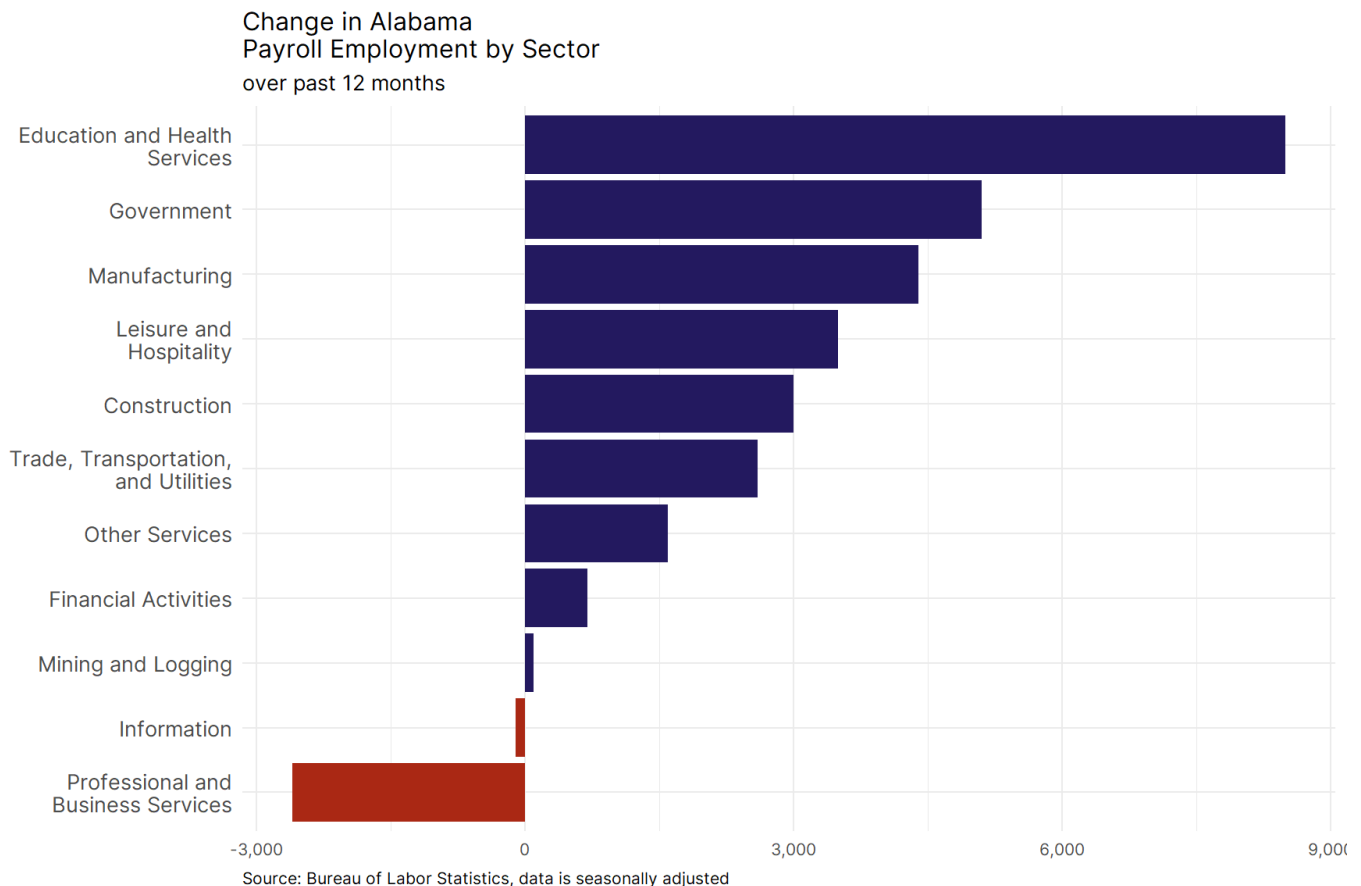


Source: Bureau of Labor Statistics, data is seasonally adjusted

## Alabama Payroll Employment



- **Alabama added 4,000 net payroll jobs, or 0.2 percent,** on a seasonally adjusted basis during April. In the prior month, Alabama added 7,700 jobs. Alabama nonfarm payroll employment has increased in **10 of the past 12 months**.
- Nationally, nonfarm payrolls **rose by 177,000 in April, or 0.1 percent**. Alabama is tied for 17th in the nation for percentage gain in nonfarm payroll employment over the past 12 months.
- **Alabama added 3,700 private sector jobs, or 0.2 percent,** on a seasonally adjusted basis during April. In the prior month, Alabama added 7,600 jobs. Alabama private sector payroll employment has increased in **10 of the past 12 months**.
- Nationally, private sector payroll jobs **rose by 167,000 jobs in April, or 0.1 percent**. Alabama is tied for 16th in the nation for percentage gain in private sector payroll employment over the past 12 months.

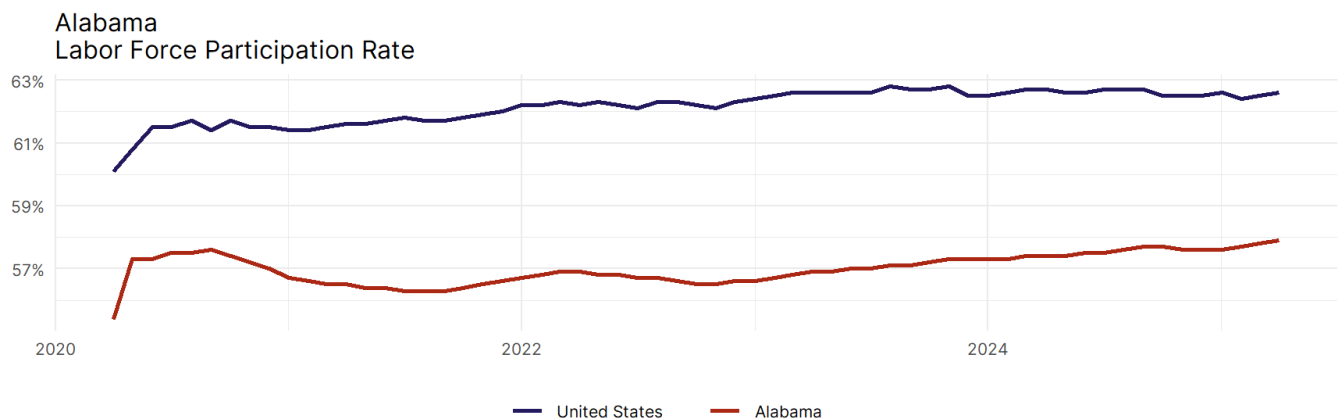


- The best performing sectors on a seasonally adjusted basis during April were **Trade, Transportation, and Utilities (2,000)** and **Leisure and Hospitality (1,000)**.
- The poorest performing sectors during the month were **Information (0)** and **Construction (-1,400)**.
- The best performing sectors during the last 12 months were **Education and Health Services (8,500)** and **Government (5,100)**.
- The poorest performing sectors during the last 12 months were **Information (-100)** and **Professional and Business Services (-2,600)**.

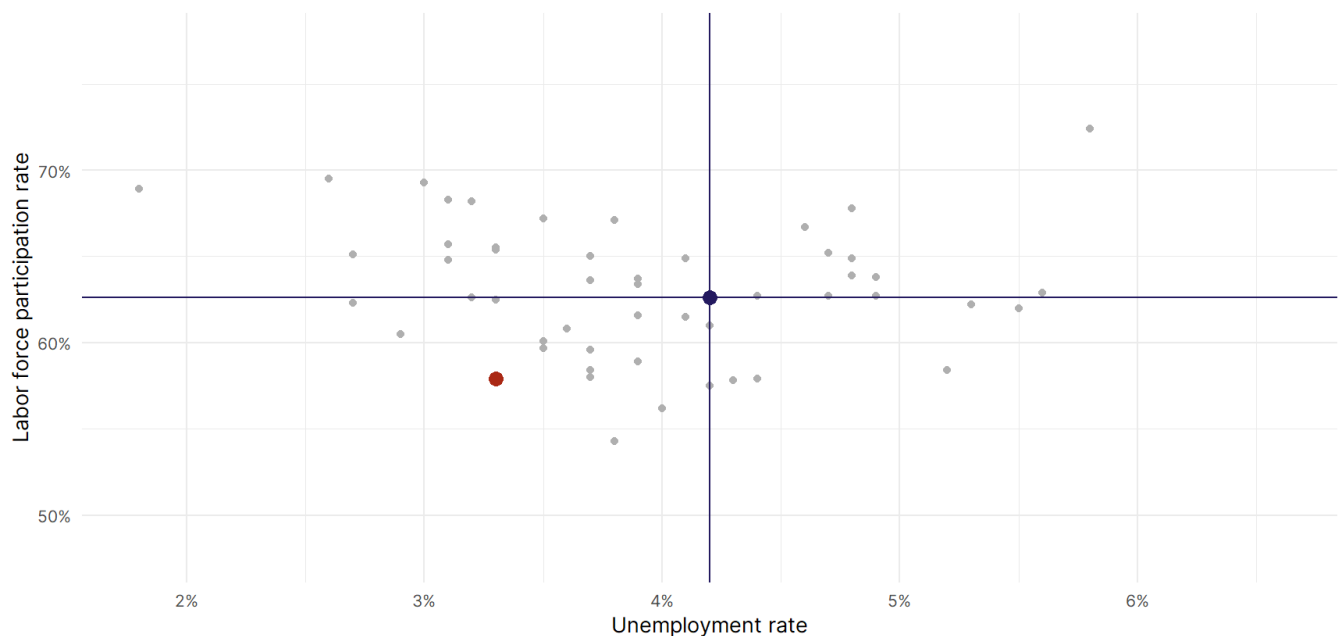
### Alabama Labor Force

The labor force participation rate is the percentage of the civilian noninstitutionalized population age 16 and older who are employed or actively looking for work.

- The labor force participation rate in **Alabama rose to 57.9 percent in April from 57.8 percent in the prior month**.
- **Alabama is tied for 46th** in the nation.
- The 10-year high for the labor force participation rate in Alabama was **57.9 percent** in April 2025, and the 10-year low was **55.4 percent** in April 2020.
- The national labor force participation rate **rose by 0.1 percentage points to 62.6 percent** in April.



Source: Bureau of Labor Statistics, data is seasonally adjusted



Source: Bureau of Labor Statistics, data is seasonally adjusted