



United States Congress

Joint Economic Committee

Est. 1946

Republicans

Representative David Schweikert, *Chairman*



Alaska

Employment Update



April 2025 | Released May 21, 2025

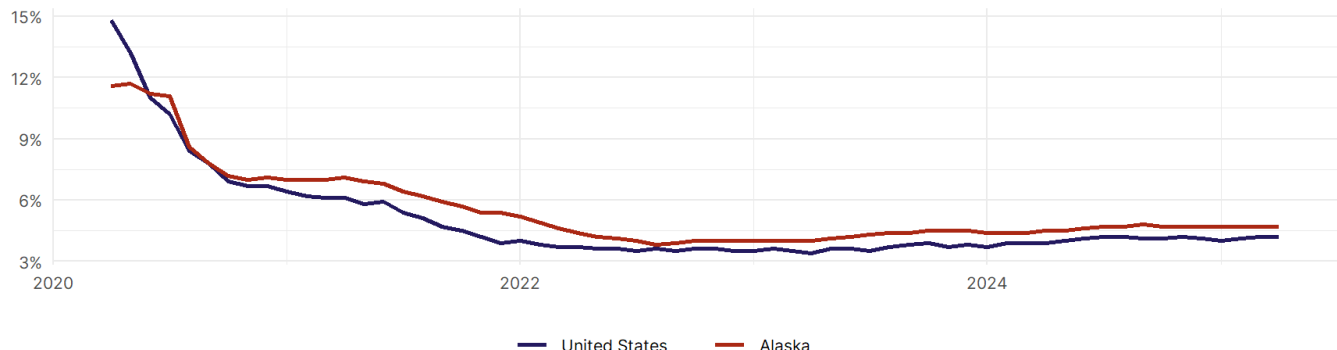
United States Employment Snapshot

- In April, among the 50 states and the District of Columbia **unemployment fell in 5, rose in 20, and remained unchanged in 26**.
- The highest unemployment rate was 5.8 percent in **District of Columbia**, and the lowest was 1.8 percent in **South Dakota**. Nationally, the unemployment rate remained unchanged in April.
- In April, **payroll jobs rose in 40 states and fell in 11**. The largest payroll job percent increase was 0.4 percent in **Mississippi**. The largest payroll job percent decline was 0.2 percent in **Vermont**.

Alaska Employment Snapshot

- In April, **Alaska lost 400 net payroll jobs** and the **unemployment rate remained unchanged at 4.7 percent**. In the prior month, Alaska added 800 net payroll jobs.
- Over the past 12 months, **Alaska added 4,600 net payroll jobs** and the **unemployment rate rose by 0.2 percentage points from 4.5 percent**.
- Nationally, nonfarm payrolls **rose by 177,000 in April, or 0.1 percent**. Alaska **is tied for 10th** in the nation for percentage gain in nonfarm payroll employment over the past 12 months.
- In April, **Alaska's private sector lost 500 net private payroll jobs**, and over the past 12 months it added 4,300 private payroll jobs. In the prior month, Alaska added 800 net private payroll jobs.
- In April, employment in Alaska **rose by 1,166**, and over the past 12 months it rose by 5,218.
- Alaska's labor force participation rate rose to 65.2 percent** in April from 65 percent and **ranks 14th** in the nation. In the past 12 months, the labor force participation rate has risen by 0.7 percentage points.

Alaska
Unemployment Rate

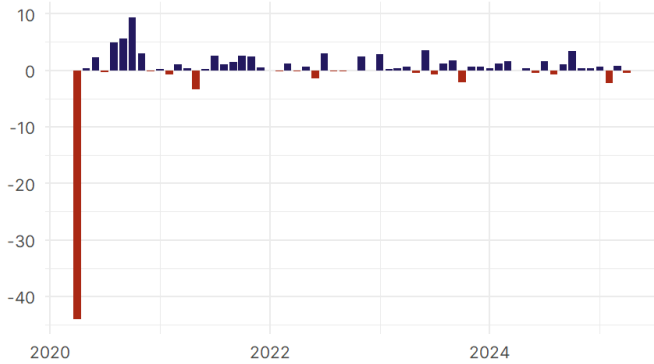


Source: Bureau of Labor Statistics, data is seasonally adjusted

Alaska Payroll Employment

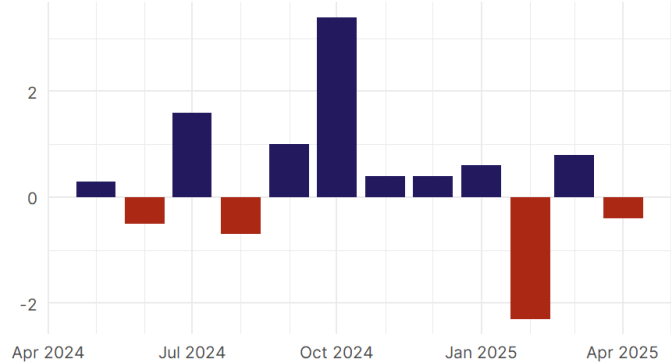
Alaska Nonfarm Payroll Jobs

Monthly change, past five years (thousands)



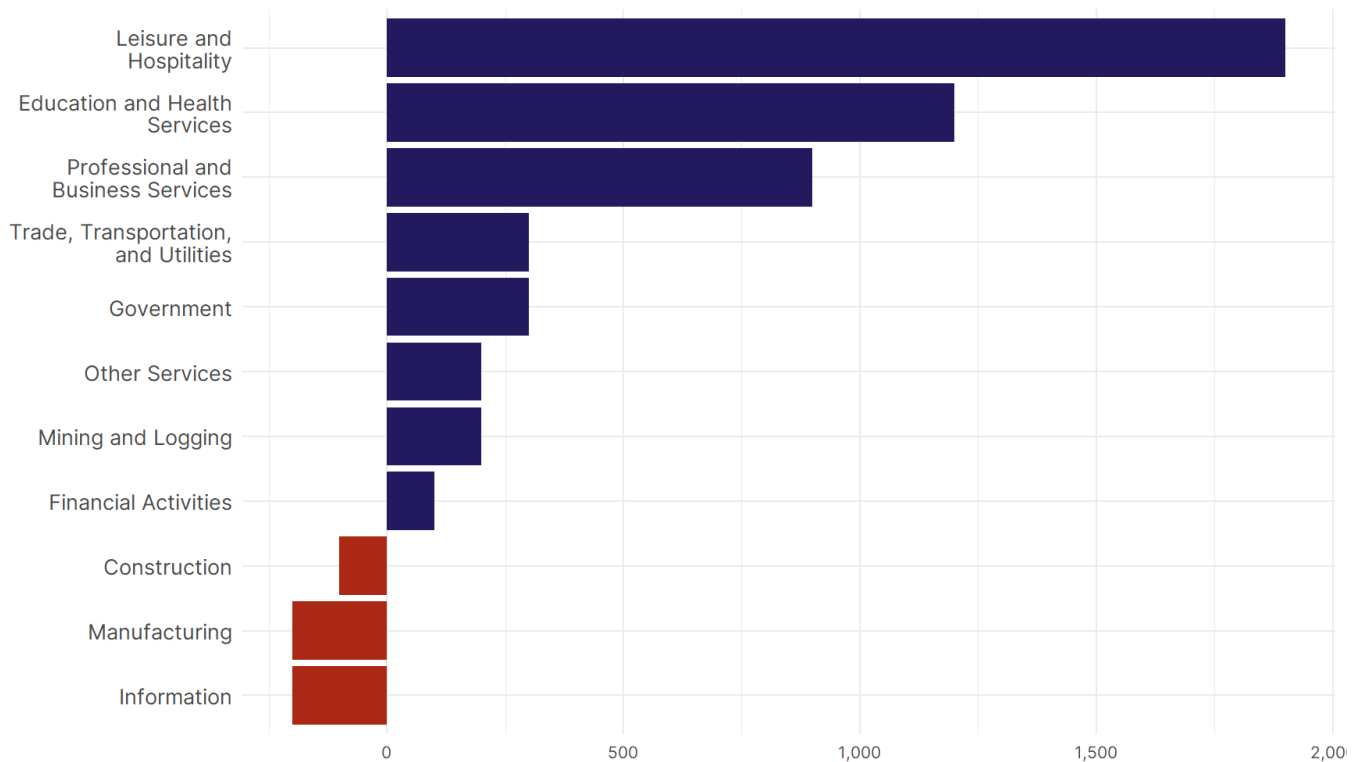
Alaska Nonfarm Payroll Jobs

Monthly change, past 12 months (thousands)



- **Alaska lost 400 net payroll jobs, or -0.1 percent**, on a seasonally adjusted basis during April. In the prior month, Alaska added 800 jobs. Alaska nonfarm payroll employment has increased in **8 of the past 12 months**.
- Nationally, nonfarm payrolls **rose by 177,000 in April, or 0.1 percent**. Alaska is tied for 10th in the nation for percentage gain in nonfarm payroll employment over the past 12 months.
- **Alaska lost 500 private sector jobs, or -0.2 percent**, on a seasonally adjusted basis during April. In the prior month, Alaska added 800 jobs. Alaska private sector payroll employment has increased in **8 of the past 12 months**.
- Nationally, private sector payroll jobs **rose by 167,000 jobs in April, or 0.1 percent**. Alaska ranks 6th in the nation for percentage gain in private sector payroll employment over the past 12 months.

Change in Alaska Payroll Employment by Sector over past 12 months

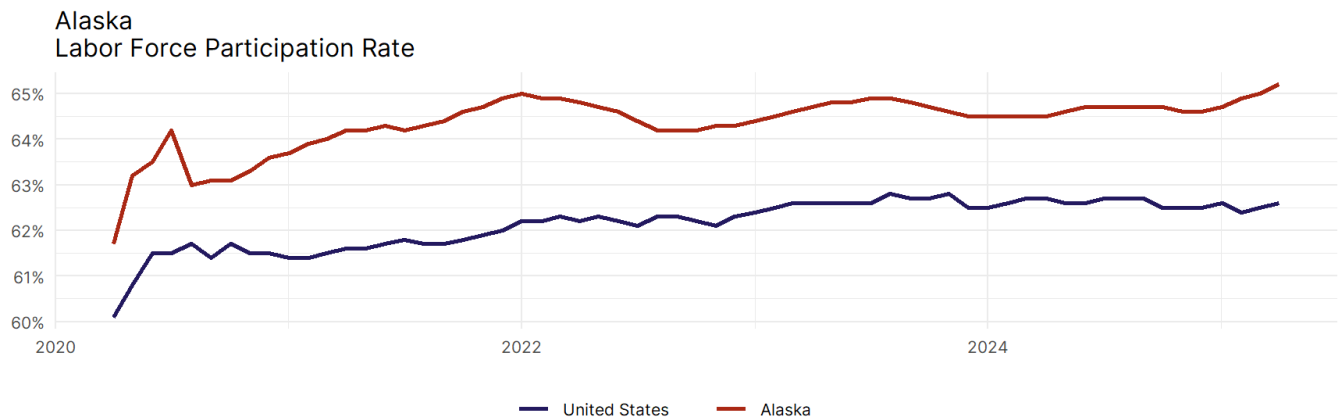


- The best performing sectors on a seasonally adjusted basis during April were **Other Services (200)** and **Government (100)**.
- The poorest performing sectors during the month were **Leisure and Hospitality (-100)** and **Construction (-600)**.
- The best performing sectors during the last 12 months were **Leisure and Hospitality (1,900)** and **Education and Health Services (1,200)**.
- The poorest performing sectors during the last 12 months were **Manufacturing (-200)** and **Information (-200)**.

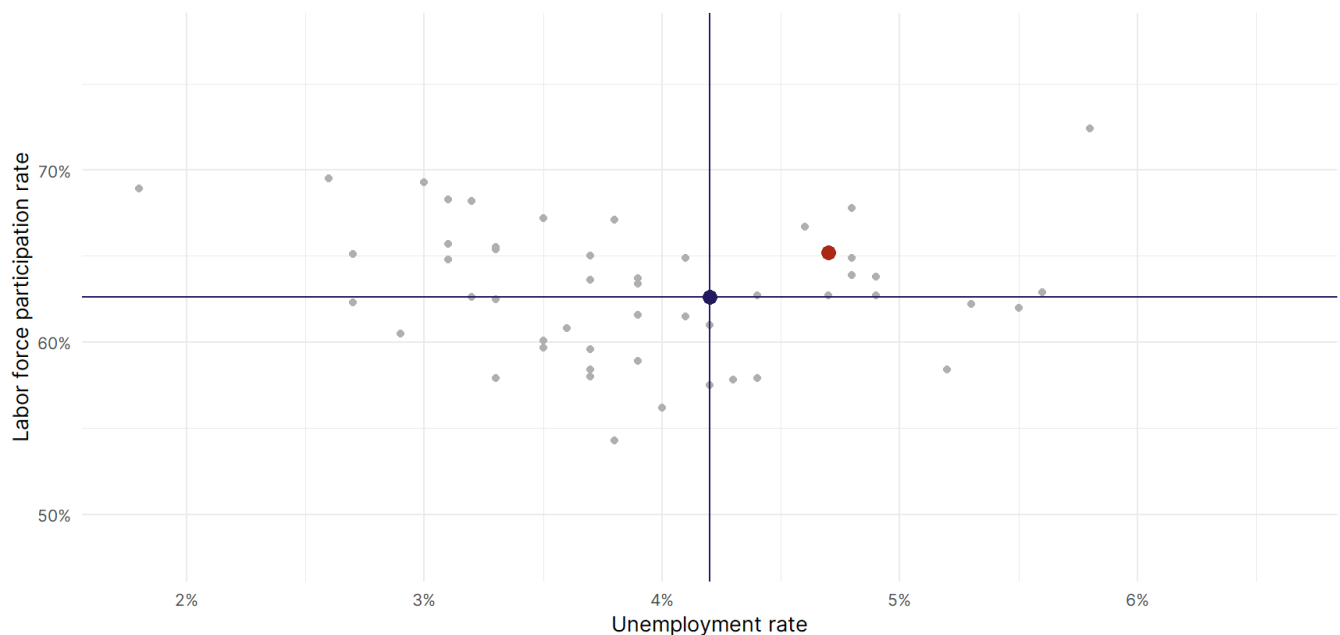
Alaska Labor Force

The labor force participation rate is the percentage of the civilian noninstitutionalized population age 16 and older who are employed or actively looking for work.

- The labor force participation rate in **Alaska rose to 65.2 percent in April from 65 percent in the prior month.**
- **Alaska ranks 14th** in the nation.
- The 10-year high for the labor force participation rate in Alaska was **67 percent** in April 2015, and the 10-year low was **61.7 percent** in April 2020.
- The national labor force participation rate **rose by 0.1 percentage points to 62.6 percent** in April.



Source: Bureau of Labor Statistics, data is seasonally adjusted



Source: Bureau of Labor Statistics, data is seasonally adjusted