



United States Congress

# Joint Economic Committee

Est. 1946

Republicans

Representative David Schweikert, *Chairman*



## Arizona Employment Update



April 2025 | Released May 21, 2025

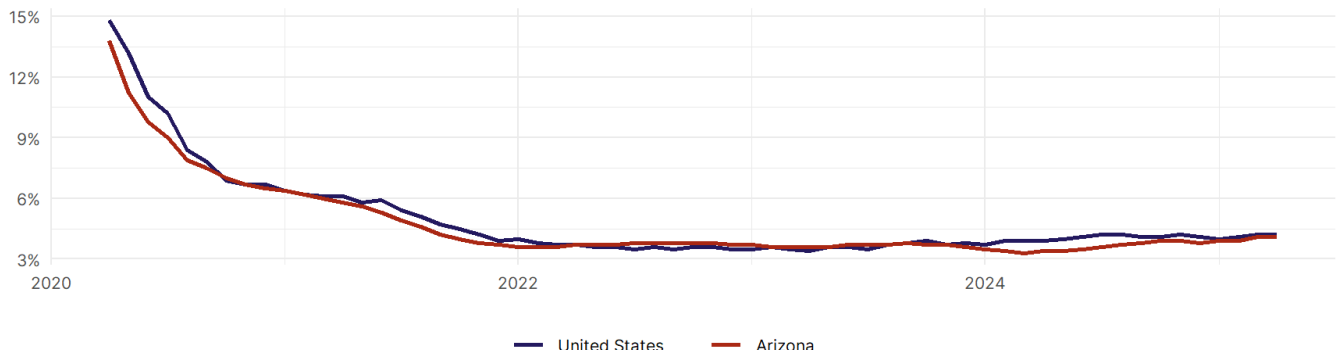
### United States Employment Snapshot

- In April, among the 50 states and the District of Columbia **unemployment fell in 5, rose in 20, and remained unchanged in 26.**
- The highest unemployment rate was 5.8 percent in **District of Columbia**, and the lowest was 1.8 percent in **South Dakota**. Nationally, the unemployment rate remained unchanged in April.
- In April, **payroll jobs rose in 40 states and fell in 11.** The largest payroll job percent increase was 0.4 percent in **Mississippi**. The largest payroll job percent decline was 0.2 percent in **Vermont**.

### Arizona Employment Snapshot

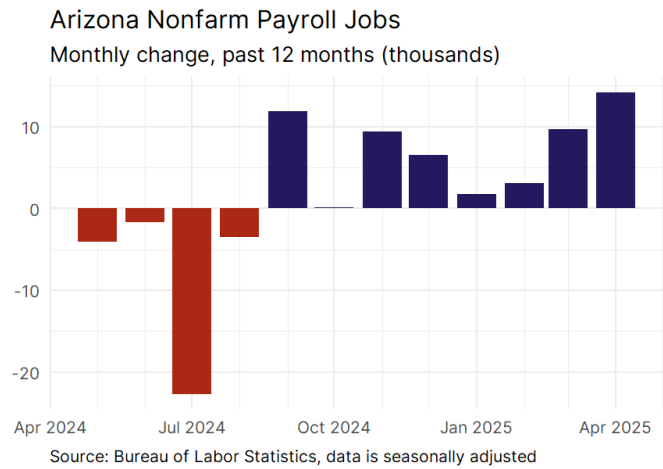
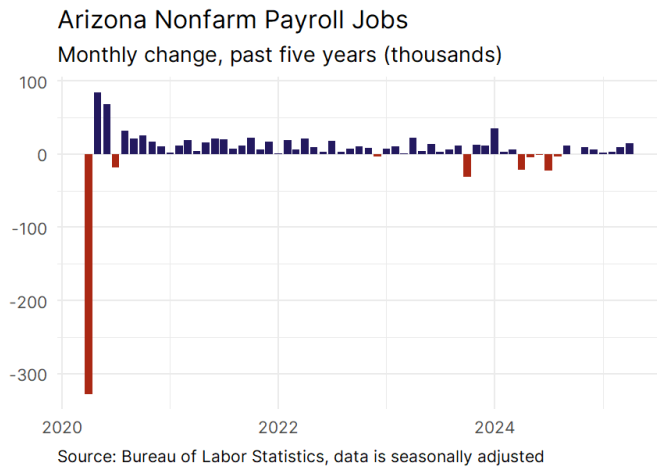
- In April, **Arizona added 14,200 net payroll jobs** and the **unemployment rate remained unchanged at 4.1 percent.** In the prior month, Arizona added 9,700 net payroll jobs.
- Over the past 12 months, **Arizona added 24,600 net payroll jobs** and the **unemployment rate rose by 0.7 percentage points from 3.4 percent.**
- Nationally, nonfarm payrolls **rose by 177,000 in April, or 0.1 percent.** Arizona **is tied for 27th** in the nation for percentage gain in nonfarm payroll employment over the past 12 months.
- In April, **Arizona's private sector added 14,400 net private payroll jobs**, and over the past 12 months it added 23,900 private payroll jobs. In the prior month, Arizona added 10,200 net private payroll jobs.
- In April, employment in Arizona **rose by 2,126**, and over the past 12 months it rose by 23,313.
- **Arizona's labor force participation rate remained steady at 61.5 percent** in April and **ranks 35th** in the nation. In the past 12 months, the labor force participation rate has fallen by 0.1 percentage points.

Arizona  
Unemployment Rate

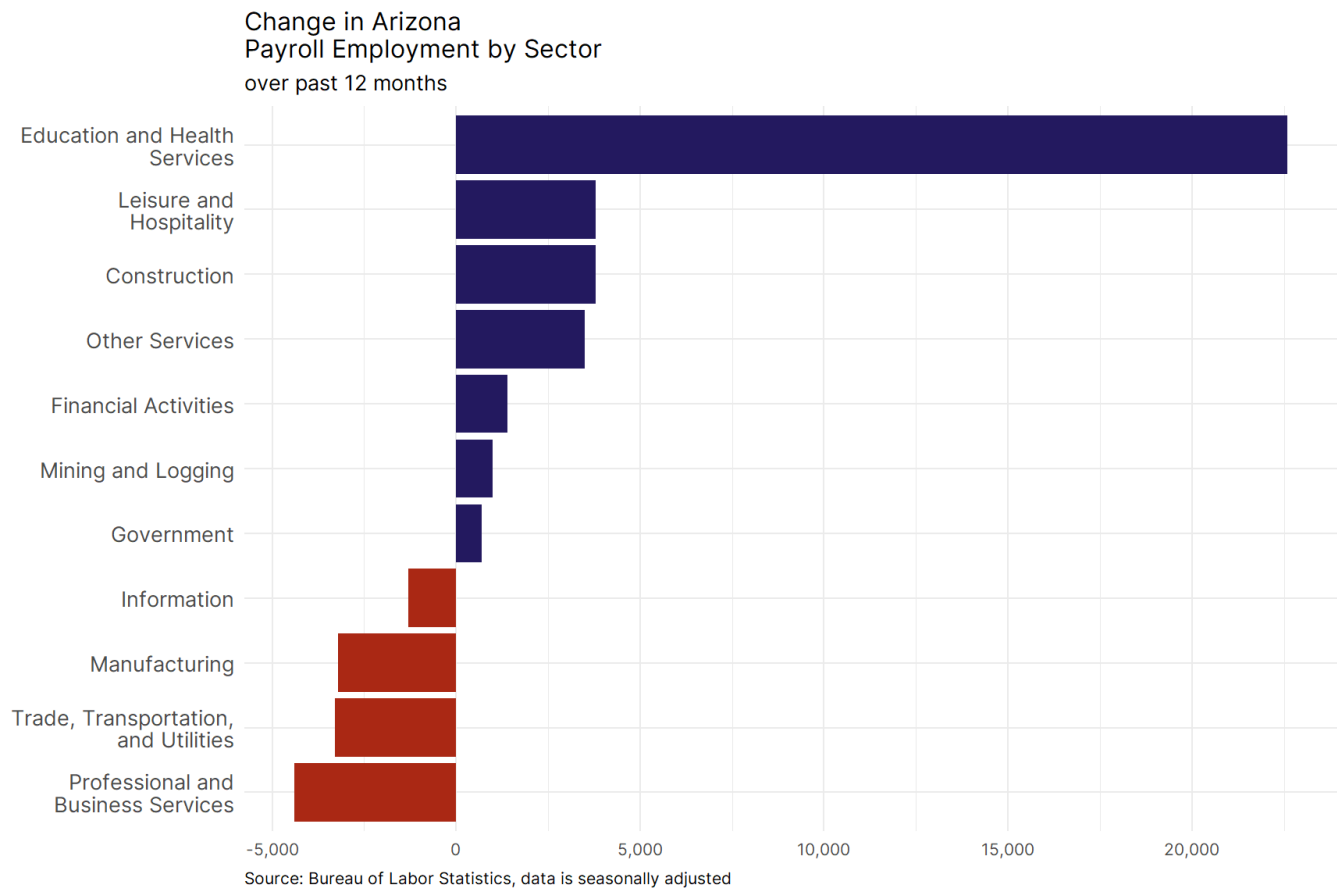


Source: Bureau of Labor Statistics, data is seasonally adjusted

## Arizona Payroll Employment



- **Arizona added 14,200 net payroll jobs, or 0.4 percent,** on a seasonally adjusted basis during April. In the prior month, Arizona added 9,700 jobs. Arizona nonfarm payroll employment has increased in **8 of the past 12 months.**
- Nationally, nonfarm payrolls **rose by 177,000 in April, or 0.1 percent.** Arizona is tied for 27th in the nation for percentage gain in nonfarm payroll employment over the past 12 months.
- **Arizona added 14,400 private sector jobs, or 0.5 percent,** on a seasonally adjusted basis during April. In the prior month, Arizona added 10,200 jobs. Arizona private sector payroll employment has increased in **8 of the past 12 months.**
- Nationally, private sector payroll jobs **rose by 167,000 jobs in April, or 0.1 percent.** Arizona is tied for 22nd in the nation for percentage gain in private sector payroll employment over the past 12 months.



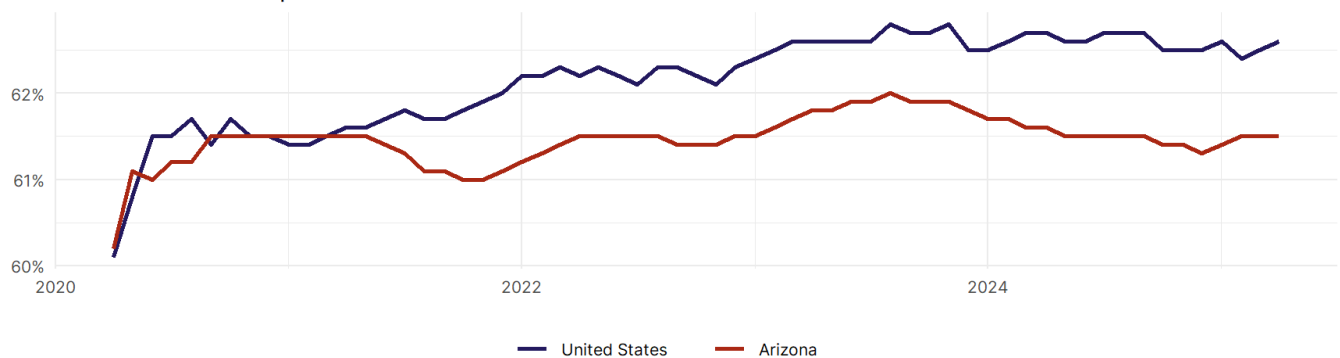
- The best performing sectors on a seasonally adjusted basis during April were **Education and Health Services (6,100)** and **Trade, Transportation, and Utilities (5,300)**.
- The poorest performing sectors during the month were **Government (-200)** and **Manufacturing tied with Leisure and Hospitality (-500)**.
- The best performing sectors during the last 12 months were **Education and Health Services (22,600)** and **Construction tied with Leisure and Hospitality (3,800)**.
- The poorest performing sectors during the last 12 months were **Trade, Transportation, and Utilities (-3,300)** and **Professional and Business Services (-4,400)**.

### Arizona Labor Force

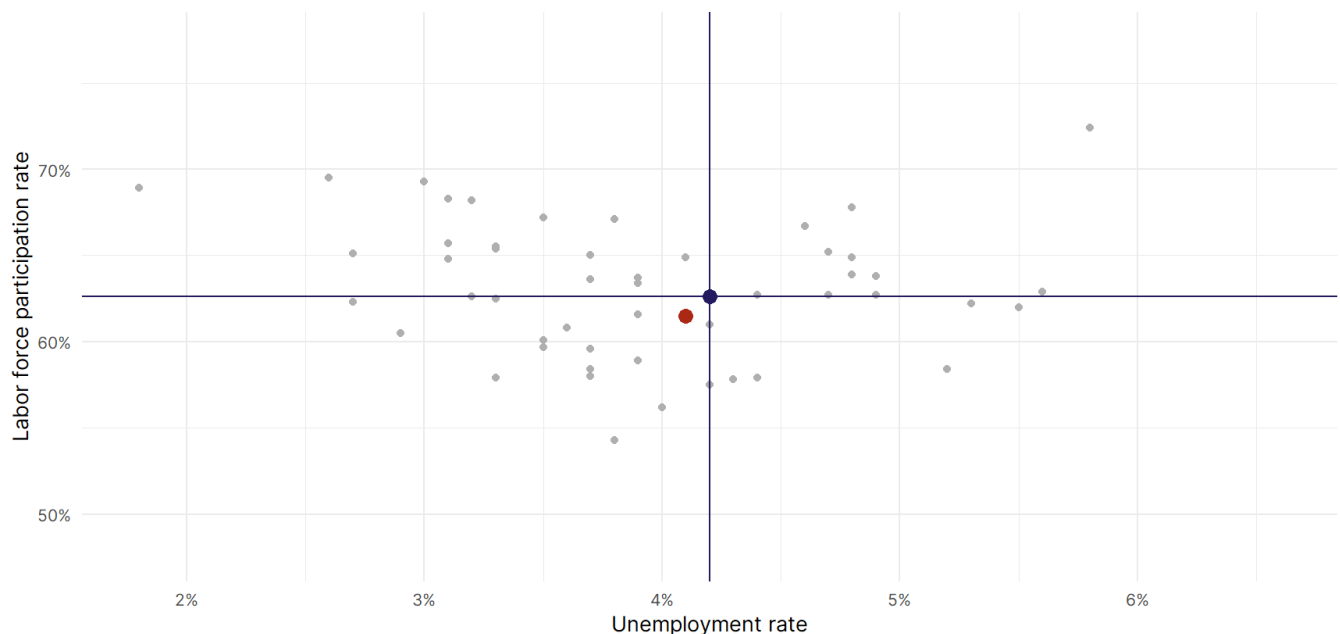
The labor force participation rate is the percentage of the civilian noninstitutionalized population age 16 and older who are employed or actively looking for work.

- The labor force participation rate in **Arizona remained unchanged at 61.5 percent in April**.
- **Arizona ranks 35th** in the nation.
- The 10-year high for the labor force participation rate in Arizona was **62.2 percent** occurring in December 2019, and the 10-year low was **60 percent** occurring in November 2015.
- The national labor force participation rate **rose by 0.1 percentage points to 62.6 percent** in April.

Arizona  
Labor Force Participation Rate



Source: Bureau of Labor Statistics, data is seasonally adjusted



Source: Bureau of Labor Statistics, data is seasonally adjusted