



United States Congress

Joint Economic Committee

Est. 1946

Republicans

Representative David Schweikert, *Chairman*



California Employment Update



April 2025 | Released May 21, 2025

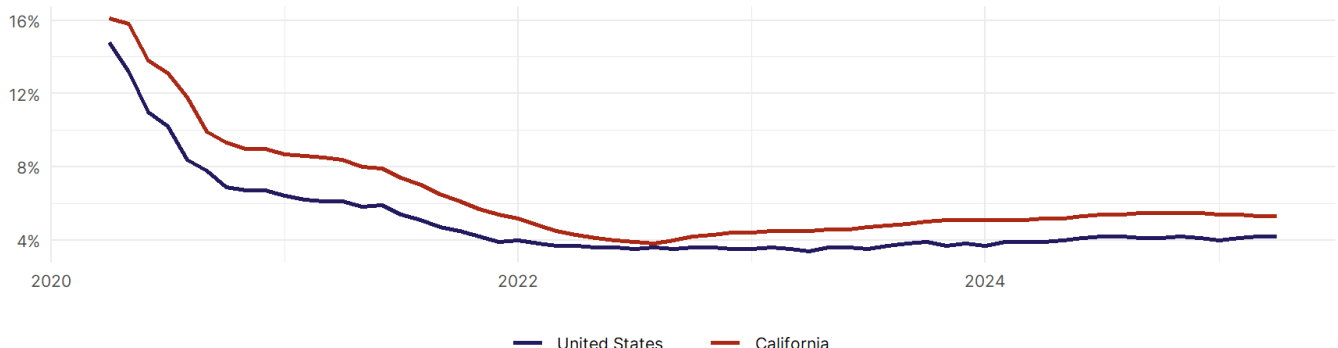
United States Employment Snapshot

- In April, among the 50 states and the District of Columbia **unemployment fell in 5, rose in 20, and remained unchanged in 26.**
- The highest unemployment rate was 5.8 percent in **District of Columbia**, and the lowest was 1.8 percent in **South Dakota**. Nationally, the unemployment rate remained unchanged in April.
- In April, **payroll jobs rose in 40 states and fell in 11.** The largest payroll job percent increase was 0.4 percent in **Mississippi**. The largest payroll job percent decline was 0.2 percent in **Vermont**.

California Employment Snapshot

- In April, **California added 17,700 net payroll jobs** and the **unemployment rate remained unchanged at 5.3 percent.** In the prior month, California lost 6,800 net payroll jobs.
- Over the past 12 months, **California added 68,000 net payroll jobs** and the **unemployment rate rose by 0.1 percentage point from 5.2 percent.**
- Nationally, nonfarm payrolls **rose by 177,000 in April, or 0.1 percent.** California **ranks 43rd** in the nation for percentage gain in nonfarm payroll employment over the past 12 months.
- In April, **California's private sector added 13,200 net private payroll jobs**, and over the past 12 months it added 9,100 private payroll jobs. In the prior month, California lost 13,900 net private payroll jobs.
- In April, employment in California **rose by 39,311**, and over the past 12 months it rose by 118,670.
- **California's labor force participation rate rose to 62.2 percent** in April from 62.1 percent and **ranks 32nd** in the nation. In the past 12 months, the labor force participation rate has risen by 0.1 percentage points.

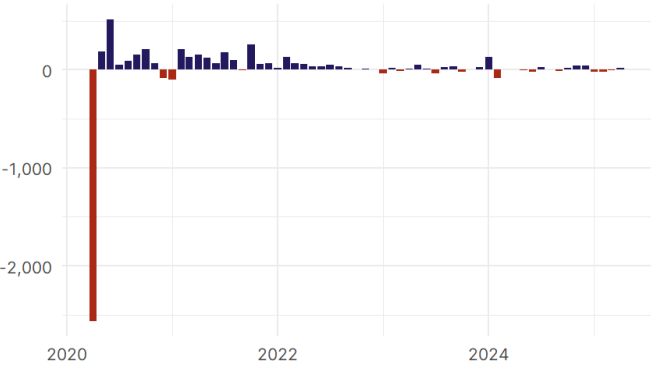
California
Unemployment Rate



Source: Bureau of Labor Statistics, data is seasonally adjusted

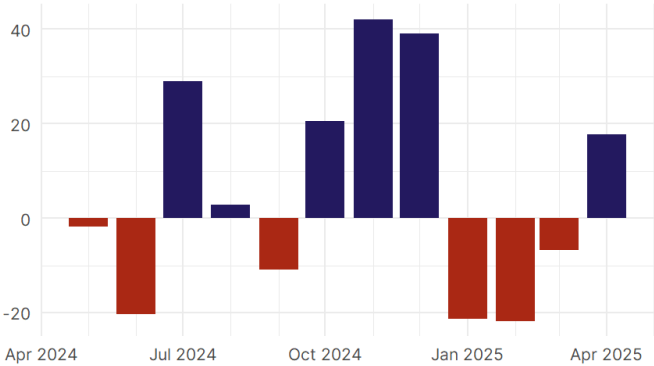
California Payroll Employment

California Nonfarm Payroll Jobs
Monthly change, past five years (thousands)



Source: Bureau of Labor Statistics, data is seasonally adjusted

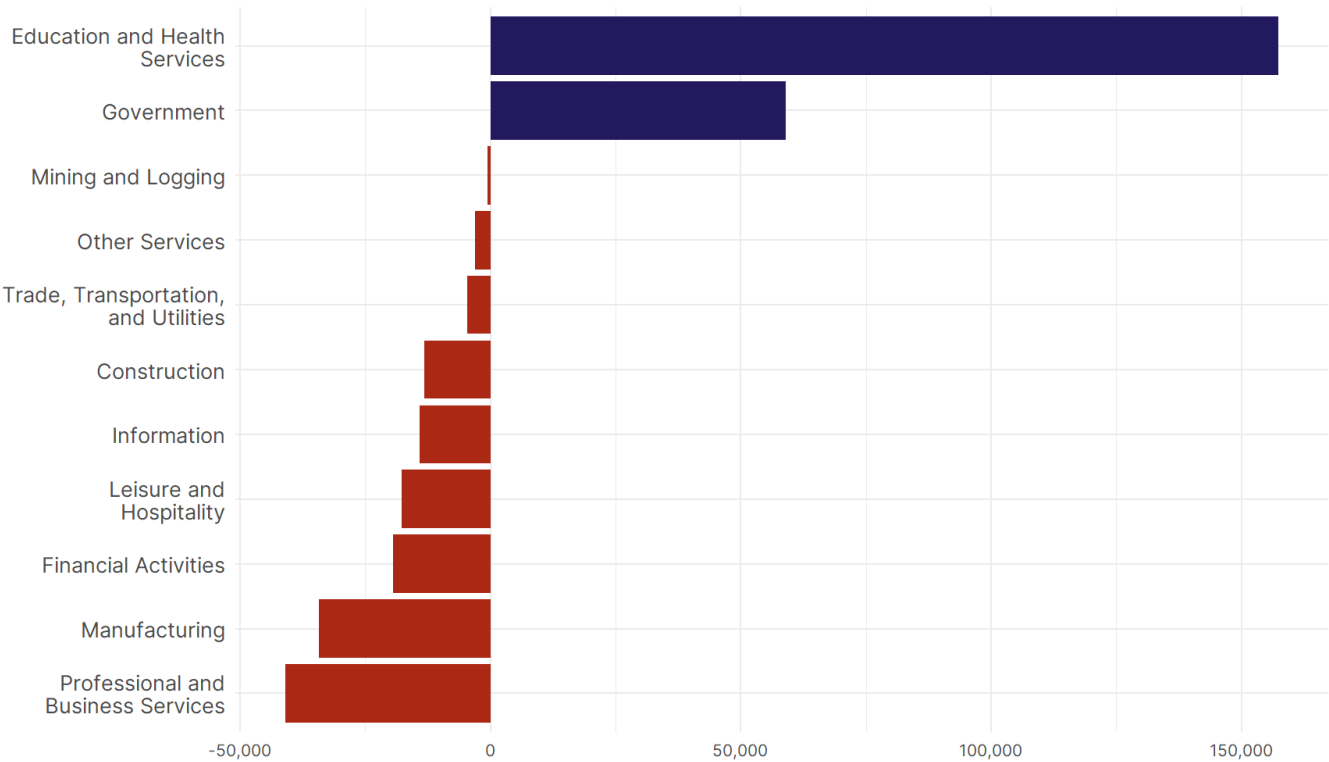
California Nonfarm Payroll Jobs
Monthly change, past 12 months (thousands)



Source: Bureau of Labor Statistics, data is seasonally adjusted

- **California added 17,700 net payroll jobs, or 0.1 percent,** on a seasonally adjusted basis during April. In the prior month, California lost 6,800 jobs. California nonfarm payroll employment has increased in **6 of the past 12 months.**
- Nationally, nonfarm payrolls **rose by 177,000 in April, or 0.1 percent.** California ranks 43rd in the nation for percentage gain in nonfarm payroll employment over the past 12 months.
- **California added 13,200 private sector jobs, or 0.1 percent,** on a seasonally adjusted basis during April. In the prior month, California lost 13,900 jobs. California private sector payroll employment has increased in **5 of the past 12 months.**
- Nationally, private sector payroll jobs **rose by 167,000 jobs in April, or 0.1 percent.** California is tied for 45th in the nation for percentage gain in private sector payroll employment over the past 12 months.

Change in California
Payroll Employment by Sector
over past 12 months



Source: Bureau of Labor Statistics, data is seasonally adjusted

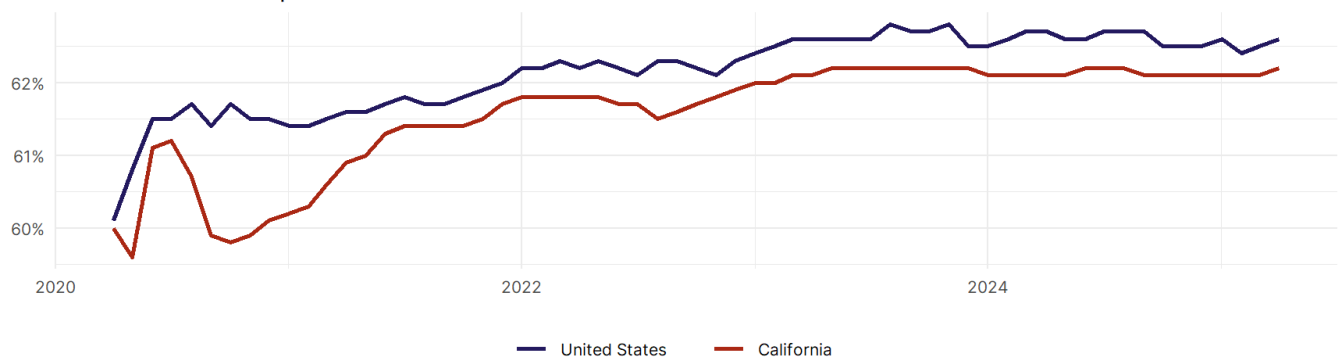
- The best performing sectors on a seasonally adjusted basis during April were **Education and Health Services (9,400)** and **Construction (6,300)**.
- The poorest performing sectors during the month were **Trade, Transportation, and Utilities (-2,100)** and **Professional and Business Services (-2,400)**.
- The best performing sectors during the last 12 months were **Education and Health Services (157,400)** and **Government (58,900)**.
- The poorest performing sectors during the last 12 months were **Manufacturing (-34,200)** and **Professional and Business Services (-41,000)**.

California Labor Force

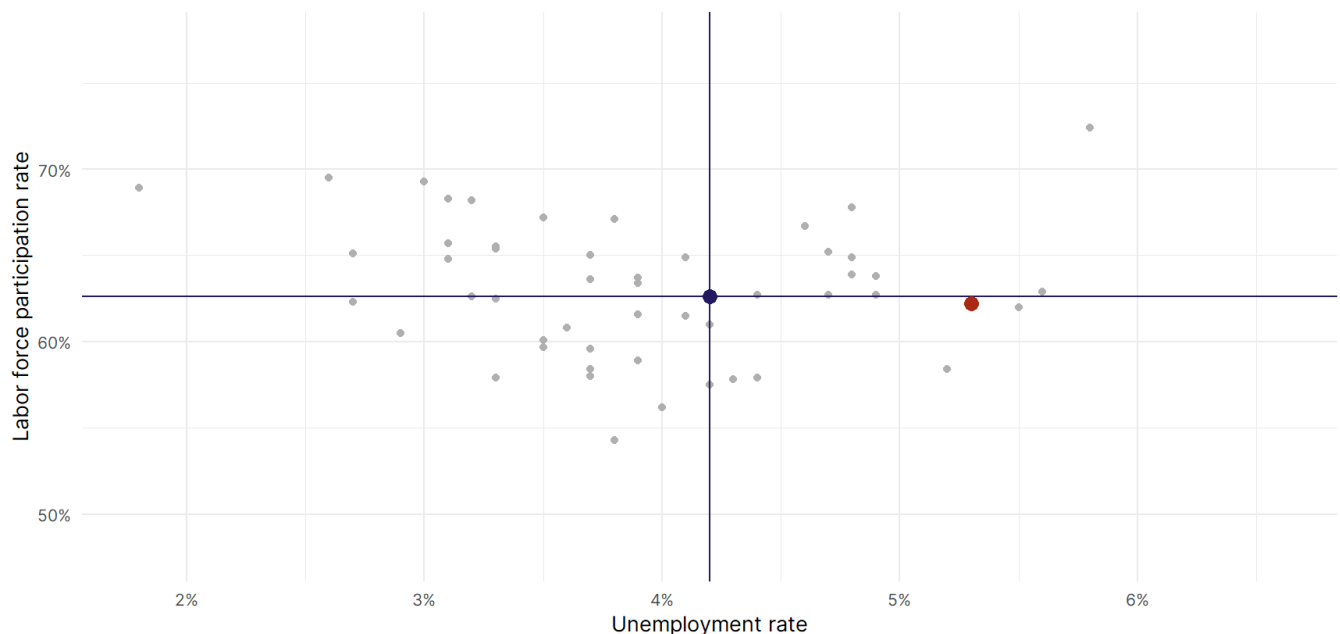
The labor force participation rate is the percentage of the civilian noninstitutionalized population age 16 and older who are employed or actively looking for work.

- The labor force participation rate in **California rose to 62.2 percent in April from 62.1 percent in the prior month.**
- **California ranks 32nd** in the nation.
- The 10-year high for the labor force participation rate in California was **63 percent** in February 2020, and the 10-year low was **59.6 percent** in May 2020.
- The national labor force participation rate **rose by 0.1 percentage points to 62.6 percent** in April.

California
Labor Force Participation Rate



Source: Bureau of Labor Statistics, data is seasonally adjusted



Source: Bureau of Labor Statistics, data is seasonally adjusted