



United States Congress

# Joint Economic Committee

Est. 1946

Republicans

Representative David Schweikert, *Chairman*



## Connecticut

### Employment Update



April 2025 | Released May 21, 2025

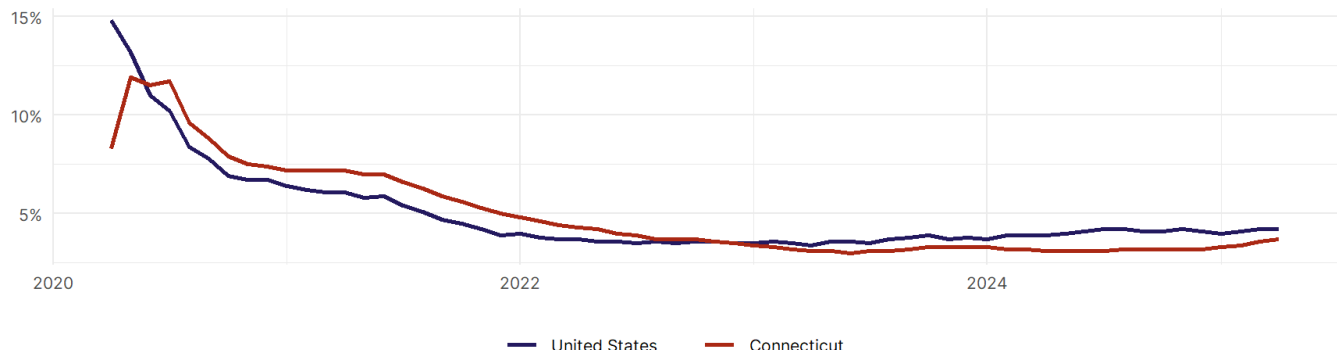
### United States Employment Snapshot

- In April, among the 50 states and the District of Columbia **unemployment fell in 5, rose in 20, and remained unchanged in 26.**
- The highest unemployment rate was 5.8 percent in **District of Columbia**, and the lowest was 1.8 percent in **South Dakota**. Nationally, the unemployment rate remained unchanged in April.
- In April, **payroll jobs rose in 40 states and fell in 11.** The largest payroll job percent increase was 0.4 percent in **Mississippi**. The largest payroll job percent decline was 0.2 percent in **Vermont**.

### Connecticut Employment Snapshot

- In April, **Connecticut added 6,900 net payroll jobs** and the **unemployment rate rose by 0.1 percentage point to 3.7 percent.** In the prior month, Connecticut lost 4,100 net payroll jobs.
- Over the past 12 months, **Connecticut added 12,000 net payroll jobs** and the **unemployment rate rose by 0.6 percentage points from 3.1 percent.**
- Nationally, nonfarm payrolls **rose by 177,000 in April, or 0.1 percent.** Connecticut **is tied for 35th** in the nation for percentage gain in nonfarm payroll employment over the past 12 months.
- In April, **Connecticut's private sector added 6,800 net private payroll jobs**, and over the past 12 months it added 13,500 private payroll jobs. In the prior month, Connecticut lost 4,600 net private payroll jobs.
- In April, employment in Connecticut **rose by 1,028**, and over the past 12 months it rose by 12,337.
- **Connecticut's labor force participation rate rose to 65 percent** in April from 64.9 percent and **ranks 16th** in the nation. In the past 12 months, the labor force participation rate has risen by 0.3 percentage points.

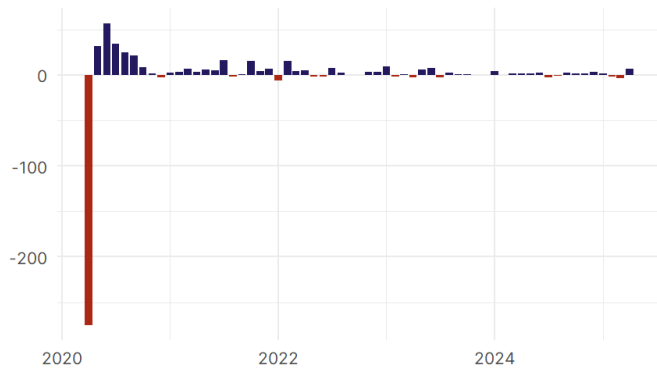
Connecticut  
Unemployment Rate



Source: Bureau of Labor Statistics, data is seasonally adjusted

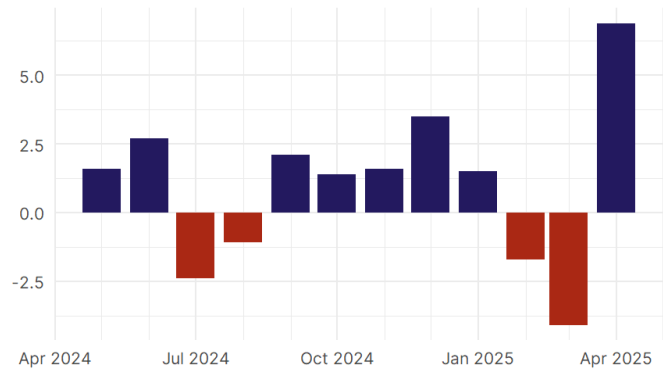
## Connecticut Payroll Employment

Connecticut Nonfarm Payroll Jobs  
Monthly change, past five years (thousands)



Source: Bureau of Labor Statistics, data is seasonally adjusted

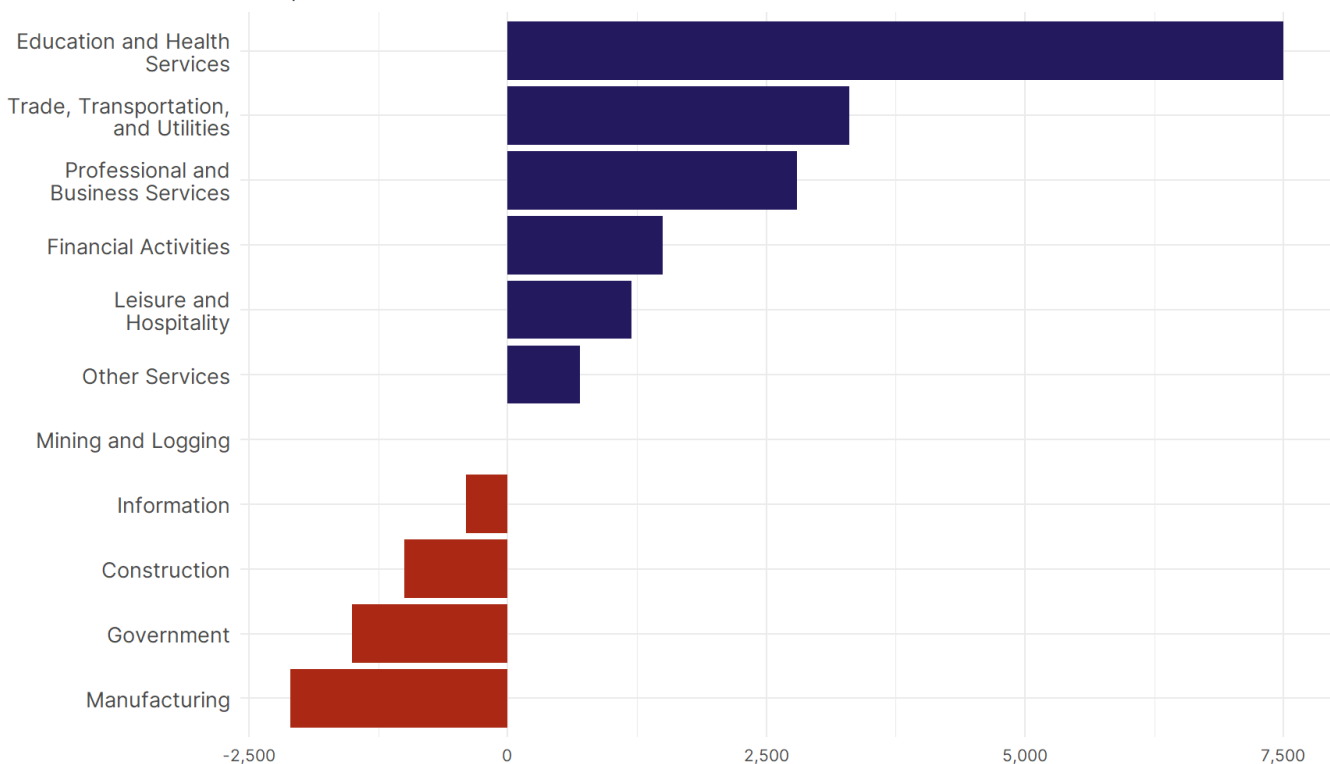
Connecticut Nonfarm Payroll Jobs  
Monthly change, past 12 months (thousands)



Source: Bureau of Labor Statistics, data is seasonally adjusted

- **Connecticut added 6,900 net payroll jobs, or 0.4 percent, on a seasonally adjusted basis during April.** In the prior month, Connecticut lost 4,100 jobs. Connecticut nonfarm payroll employment has increased in **8 of the past 12 months**.
- Nationally, nonfarm payrolls **rose by 177,000 in April, or 0.1 percent**. Connecticut is tied for 35th in the nation for percentage gain in nonfarm payroll employment over the past 12 months.
- **Connecticut added 6,800 private sector jobs, or 0.5 percent, on a seasonally adjusted basis during April.** In the prior month, Connecticut lost 4,600 jobs. Connecticut private sector payroll employment has increased in **8 of the past 12 months**.
- Nationally, private sector payroll jobs **rose by 167,000 jobs in April, or 0.1 percent**. Connecticut is tied for 22nd in the nation for percentage gain in private sector payroll employment over the past 12 months.

Change in Connecticut  
Payroll Employment by Sector  
over past 12 months



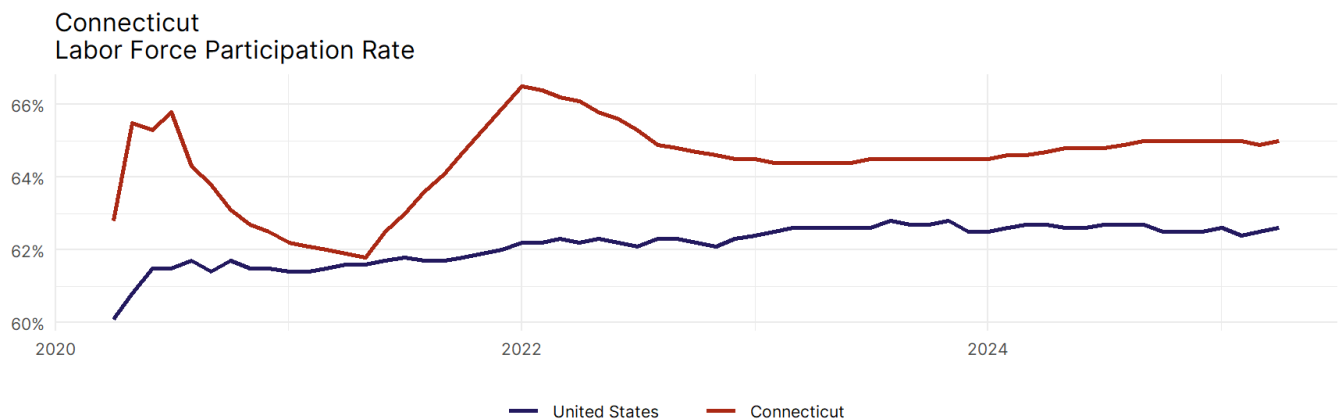
Source: Bureau of Labor Statistics, data is seasonally adjusted

- The best performing sectors on a seasonally adjusted basis during April were **Professional and Business Services (3,300)** and **Education and Health Services (1,800)**.
- The poorest performing sectors during the month were **Information (-200)** and **Financial Activities (-400)**.
- The best performing sectors during the last 12 months were **Education and Health Services (7,500)** and **Trade, Transportation, and Utilities (3,300)**.
- The poorest performing sectors during the last 12 months were **Government (-1,500)** and **Manufacturing (-2,100)**.

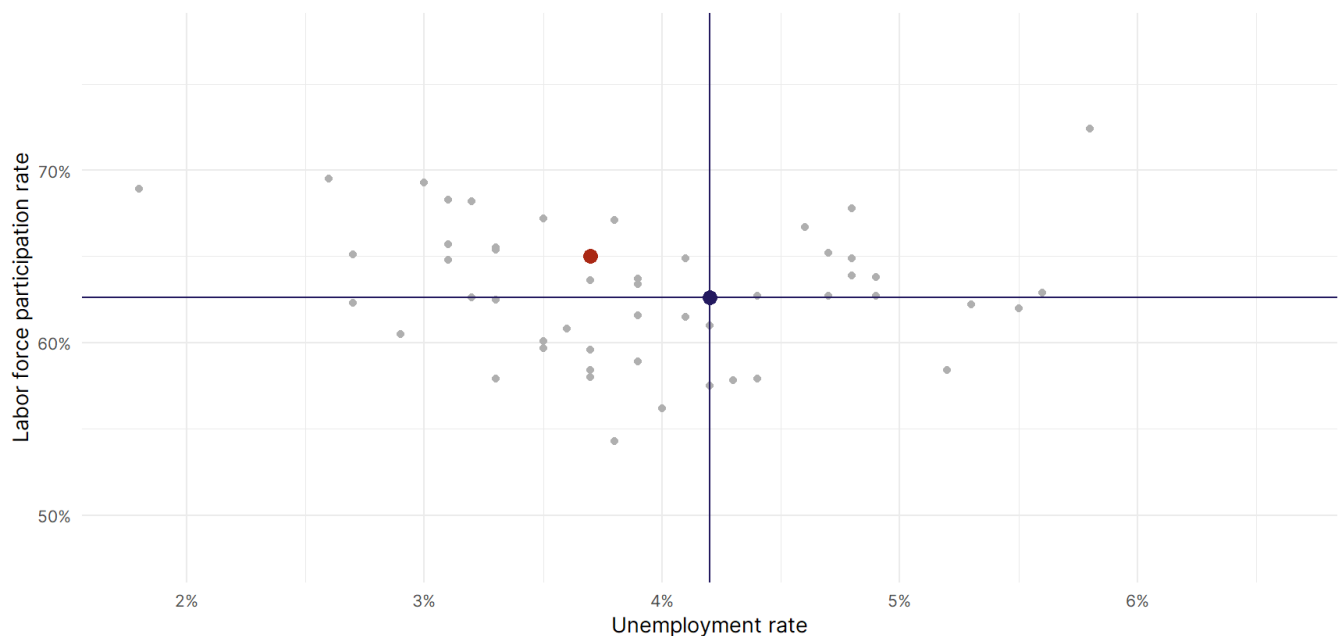
### Connecticut Labor Force

The labor force participation rate is the percentage of the civilian noninstitutionalized population age 16 and older who are employed or actively looking for work.

- The labor force participation rate in **Connecticut rose to 65 percent in April from 64.9 percent in the prior month**.
- **Connecticut ranks 16th** in the nation.
- The 10-year high for the labor force participation rate in Connecticut was **66.6 percent** occurring in December 2019, and the 10-year low was **61.8 percent** in May 2021.
- The national labor force participation rate **rose by 0.1 percentage points to 62.6 percent** in April.



Source: Bureau of Labor Statistics, data is seasonally adjusted



Source: Bureau of Labor Statistics, data is seasonally adjusted