



United States Congress

Joint Economic Committee

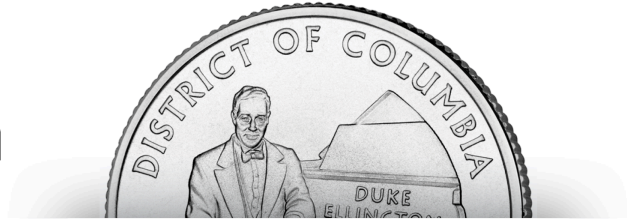
Est. 1946

Republicans

Representative David Schweikert, *Chairman*



District of Columbia Employment Update



April 2025 | Released May 21, 2025

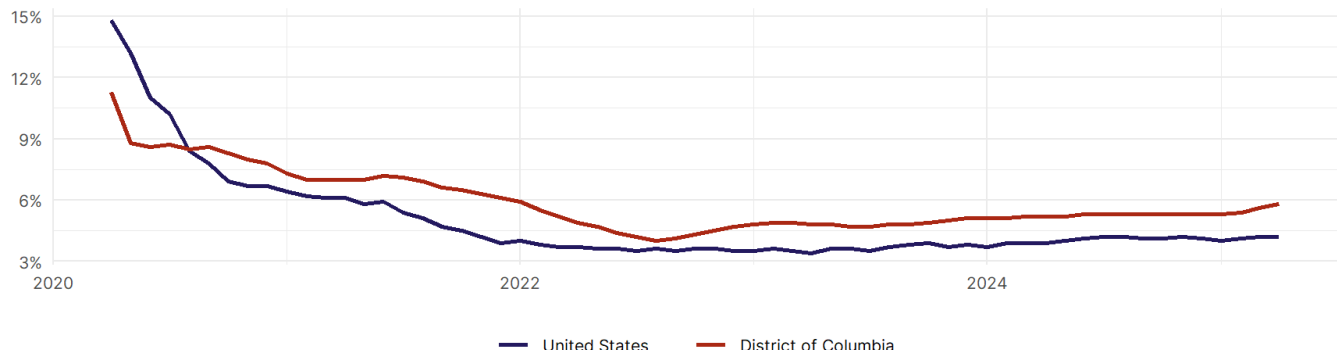
United States Employment Snapshot

- In April, among the 50 states and the District of Columbia **unemployment fell in 5, rose in 20, and remained unchanged in 26.**
- The highest unemployment rate was 5.8 percent in **District of Columbia**, and the lowest was 1.8 percent in **South Dakota**. Nationally, the unemployment rate remained unchanged in April.
- In April, **payroll jobs rose in 40 states and fell in 11.** The largest payroll job percent increase was 0.4 percent in **Mississippi**. The largest payroll job percent decline was 0.2 percent in **Vermont**.

District of Columbia Employment Snapshot

- In April, **District of Columbia lost 600 net payroll jobs** and the **unemployment rate rose by 0.2 percentage point to 5.8 percent.** In the prior month, District of Columbia added 1,400 net payroll jobs.
- Over the past 12 months, **District of Columbia lost 700 net payroll jobs** and the **unemployment rate rose by 0.6 percentage points from 5.2 percent.**
- Nationally, nonfarm payrolls **rose by 177,000 in April, or 0.1 percent.** District of Columbia **is tied for 49th** in the nation for percentage gain in nonfarm payroll employment over the past 12 months.
- In April, **District of Columbia's private sector added 400 net private payroll jobs**, and over the past 12 months it added 2,000 private payroll jobs. In the prior month, District of Columbia added 500 net private payroll jobs.
- In April, employment in District of Columbia **fell by 452**, and over the past 12 months it rose by 2,575.
- **District of Columbia's labor force participation rate remained steady at 72.4 percent** in April and **ranks 1st** in the nation. In the past 12 months, the labor force participation rate has fallen by 0.3 percentage points.

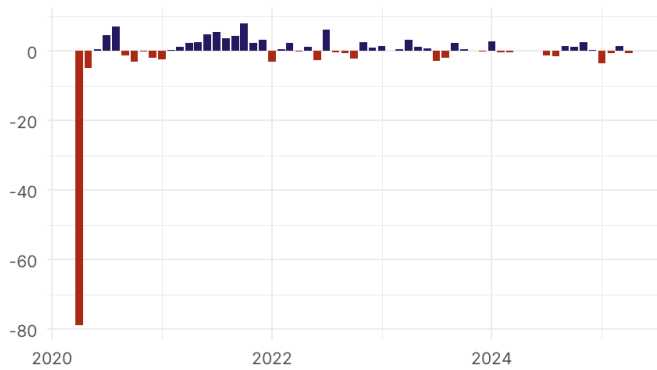
District of Columbia
Unemployment Rate



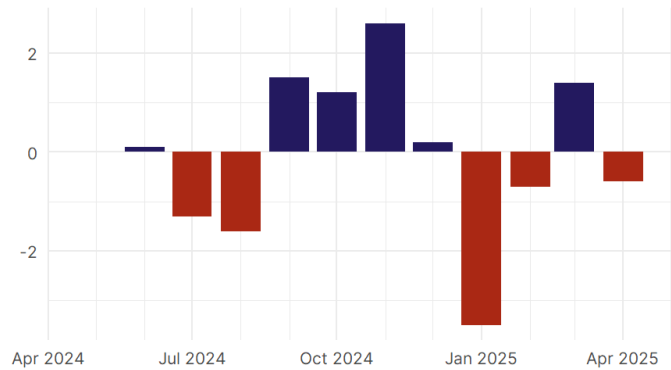
Source: Bureau of Labor Statistics, data is seasonally adjusted

District of Columbia Payroll Employment

District of Columbia Nonfarm Payroll Jobs
Monthly change, past five years (thousands)

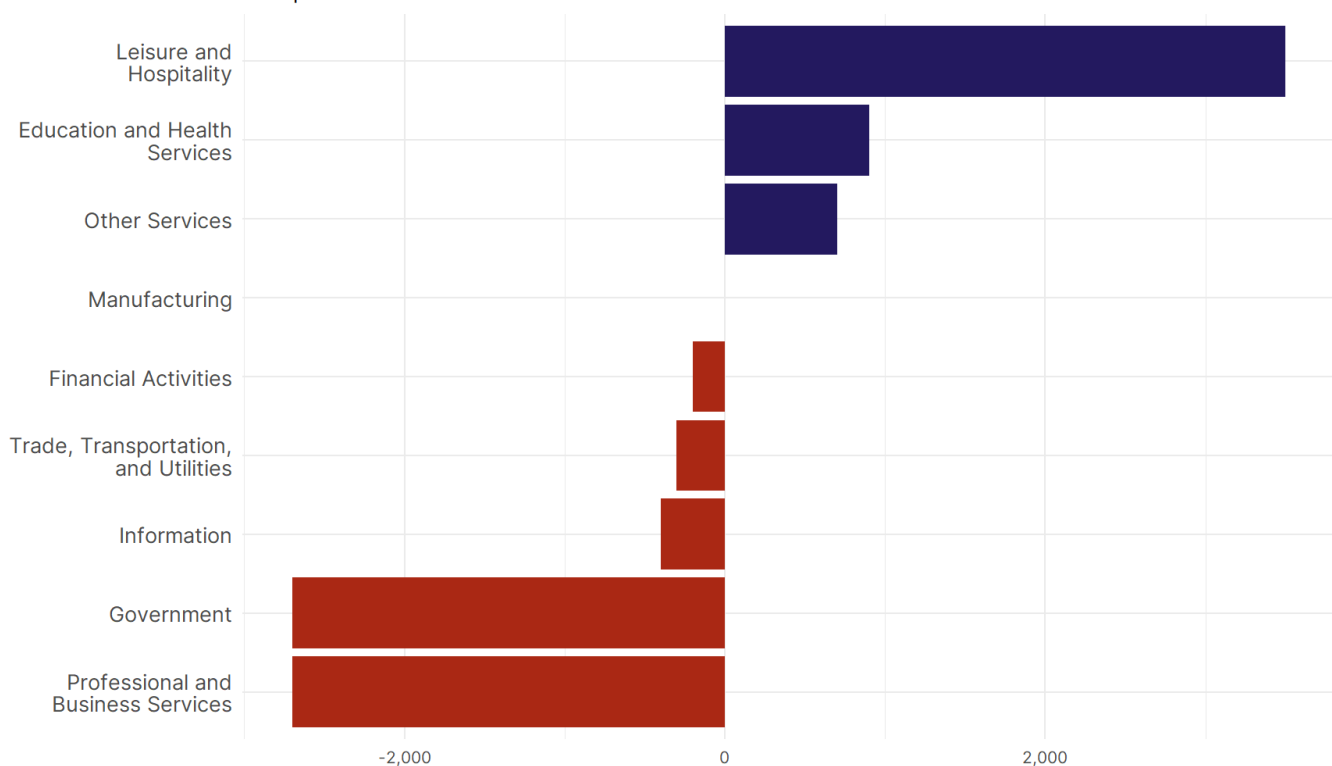


District of Columbia Nonfarm Payroll Jobs
Monthly change, past 12 months (thousands)



- **District of Columbia lost 600 net payroll jobs, or -0.1 percent**, on a seasonally adjusted basis during April. In the prior month, District of Columbia added 1,400 jobs. District of Columbia nonfarm payroll employment has increased in **6 of the past 12 months**.
- Nationally, nonfarm payrolls **rose by 177,000 in April, or 0.1 percent**. District of Columbia is tied for 49th in the nation for percentage gain in nonfarm payroll employment over the past 12 months.
- **District of Columbia added 400 private sector jobs, or 0.1 percent**, on a seasonally adjusted basis during April. In the prior month, District of Columbia added 500 jobs. District of Columbia private sector payroll employment has increased in **9 of the past 12 months**.
- Nationally, private sector payroll jobs **rose by 167,000 jobs in April, or 0.1 percent**. District of Columbia is tied for 39th in the nation for percentage gain in private sector payroll employment over the past 12 months.

Change in District of Columbia
Payroll Employment by Sector
over past 12 months



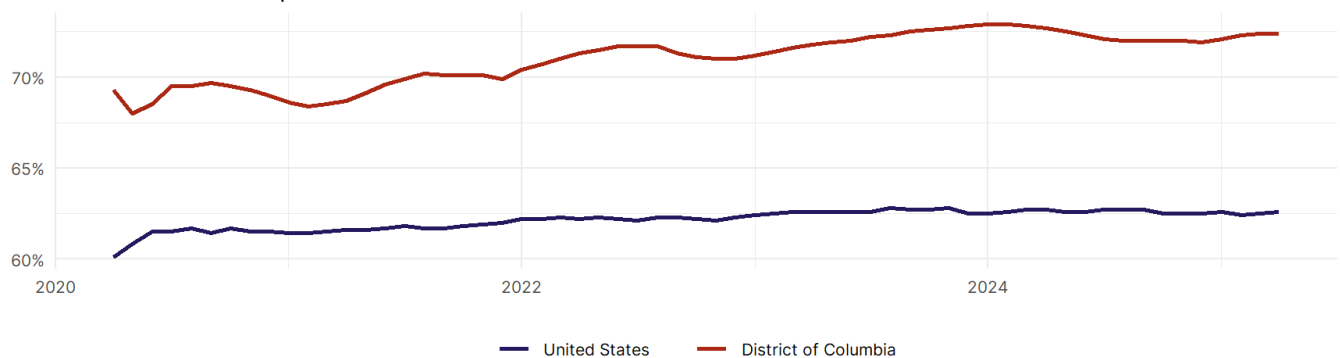
- The best performing sectors on a seasonally adjusted basis during April were **Leisure and Hospitality (1,300)** and **Trade, Transportation, and Utilities (200)**.
- The poorest performing sectors during the month were **Government (-1,000)** and **Professional and Business Services (-1,100)**.
- The best performing sectors during the last 12 months were **Leisure and Hospitality (3,500)** and **Education and Health Services (900)**.
- The poorest performing sectors during the last 12 months were **Government (-2,700)** and **Professional and Business Services (-2,700)**.

District of Columbia Labor Force

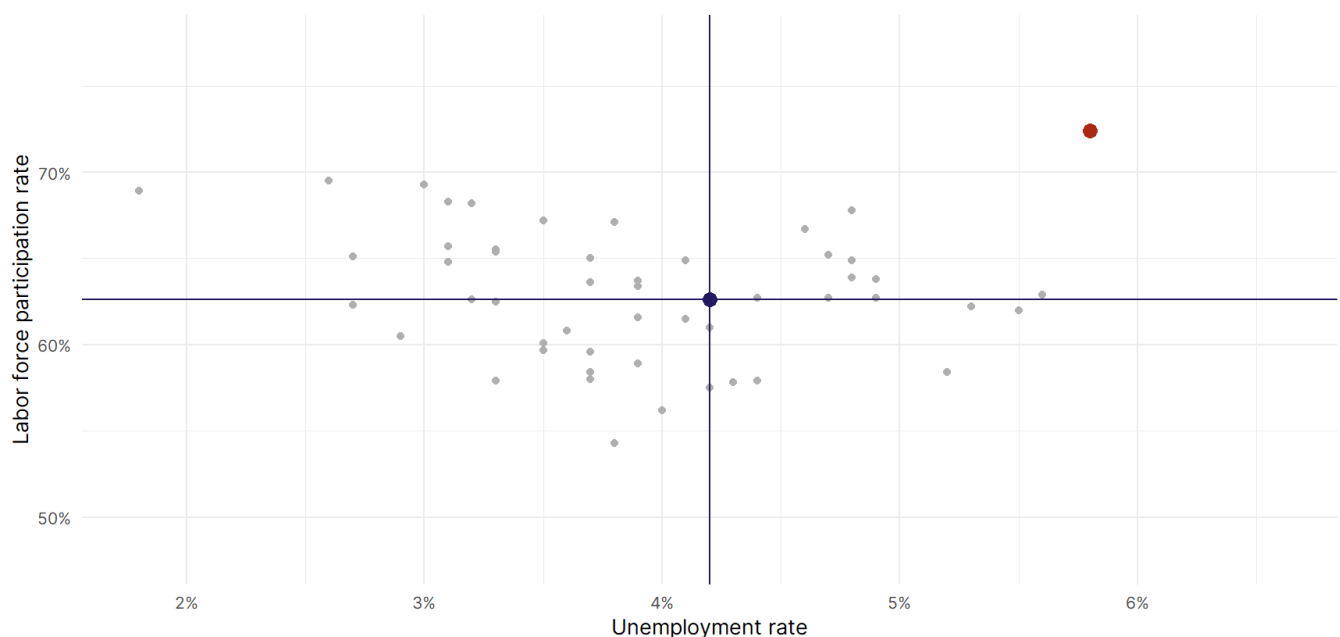
The labor force participation rate is the percentage of the civilian noninstitutionalized population age 16 and older who are employed or actively looking for work.

- The labor force participation rate in **District of Columbia remained unchanged at 72.4 percent in April**.
- **District of Columbia ranks 1st** in the nation.
- The 10-year high for the labor force participation rate in District of Columbia was **72.9 percent** occurring in February 2024, and the 10-year low was **68 percent** in May 2020.
- The national labor force participation rate **rose by 0.1 percentage points to 62.6 percent** in April.

District of Columbia
Labor Force Participation Rate



Source: Bureau of Labor Statistics, data is seasonally adjusted



Source: Bureau of Labor Statistics, data is seasonally adjusted