



United States Congress

Joint Economic Committee

Est. 1946

Republicans

Representative David Schweikert, *Chairman*



Indiana Employment Update



April 2025 | Released May 21, 2025

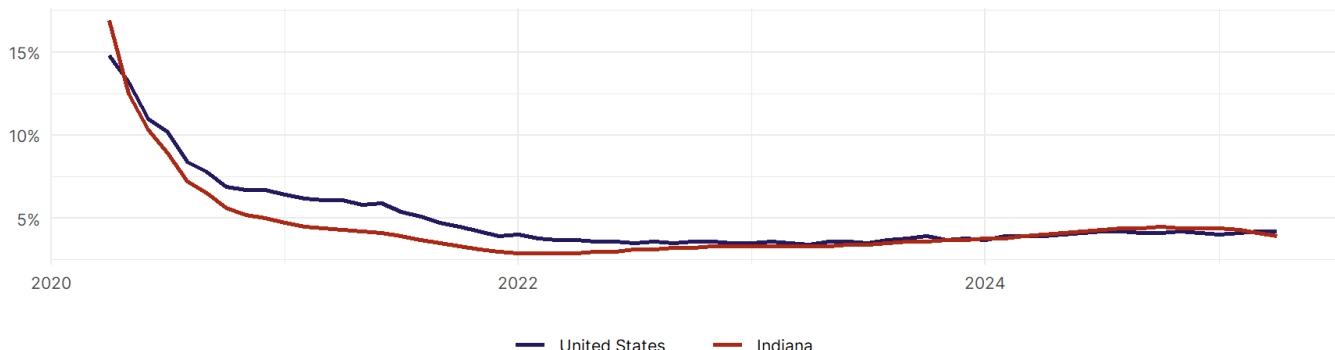
United States Employment Snapshot

- In April, among the 50 states and the District of Columbia **unemployment fell in 5, rose in 20, and remained unchanged in 26.**
- The highest unemployment rate was 5.8 percent in **District of Columbia**, and the lowest was 1.8 percent in **South Dakota**. Nationally, the unemployment rate remained unchanged in April.
- In April, **payroll jobs rose in 40 states and fell in 11.** The largest payroll job percent increase was 0.4 percent in **Mississippi**. The largest payroll job percent decline was 0.2 percent in **Vermont**.

Indiana Employment Snapshot

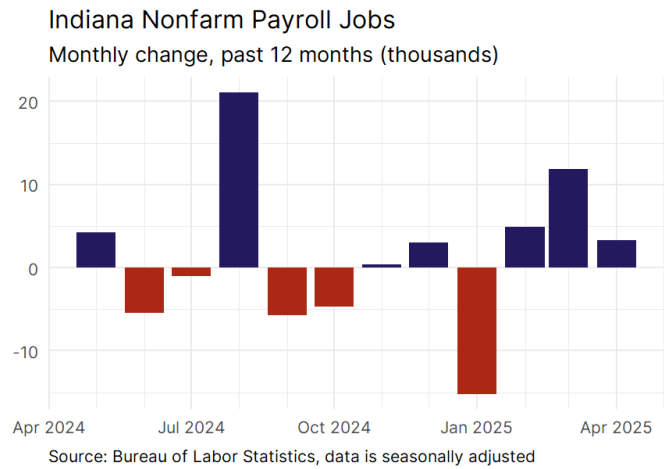
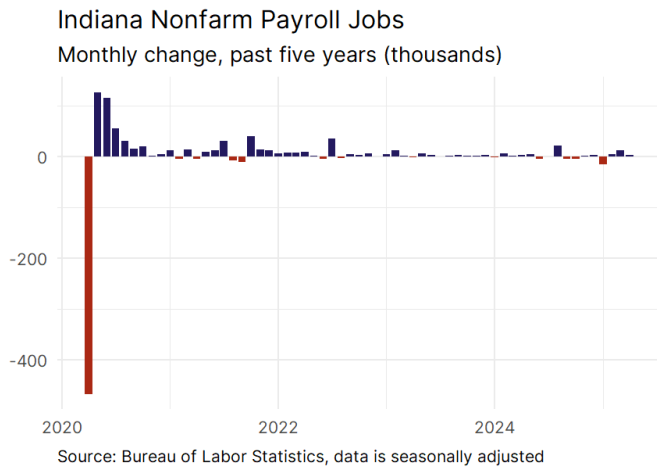
- In April, **Indiana added 3,300 net payroll jobs** and the **unemployment rate fell by 0.2 percentage point to 3.9 percent.** In the prior month, Indiana added 11,900 net payroll jobs.
- Over the past 12 months, **Indiana added 16,800 net payroll jobs** and the **unemployment rate fell by 0.1 percentage point from 4 percent.**
- Nationally, nonfarm payrolls **rose by 177,000 in April, or 0.1 percent.** Indiana **is tied for 41st** in the nation for percentage gain in nonfarm payroll employment over the past 12 months.
- In April, **Indiana's private sector added 4,800 net private payroll jobs**, and over the past 12 months it added 12,100 private payroll jobs. In the prior month, Indiana added 10,000 net private payroll jobs.
- In April, employment in Indiana **rose by 6,593**, and over the past 12 months it rose by 51,895.
- **Indiana's labor force participation rate remained steady at 63.7 percent** in April and **ranks 22nd** in the nation. In the past 12 months, the labor force participation rate has risen by 0.4 percentage points.

Indiana
Unemployment Rate

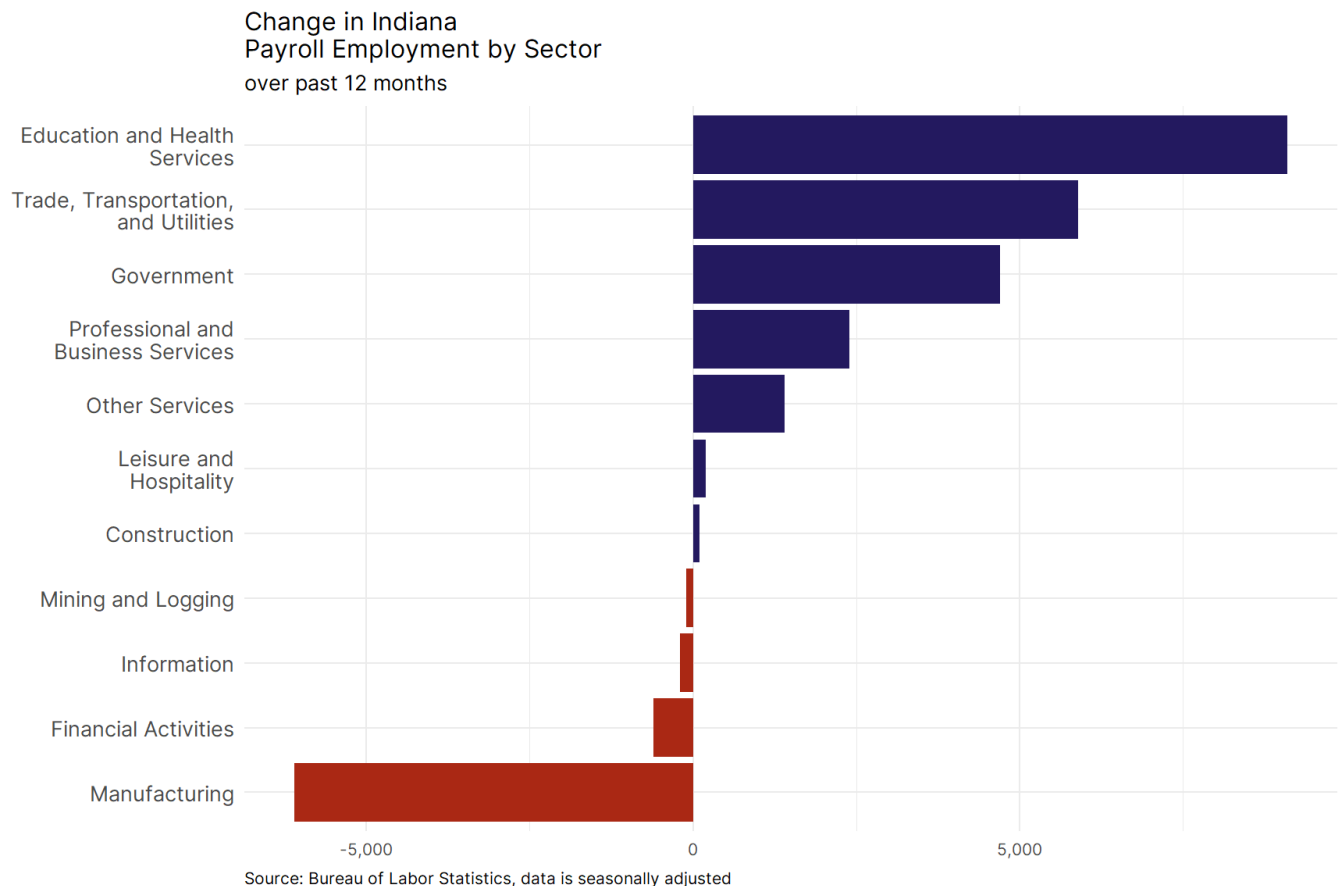


Source: Bureau of Labor Statistics, data is seasonally adjusted

Indiana Payroll Employment



- **Indiana added 3,300 net payroll jobs, or 0.1 percent,** on a seasonally adjusted basis during April. In the prior month, Indiana added 11,900 jobs. Indiana nonfarm payroll employment has increased in **7 of the past 12 months.**
- Nationally, nonfarm payrolls **rose by 177,000 in April, or 0.1 percent.** Indiana is tied for 41st in the nation for percentage gain in nonfarm payroll employment over the past 12 months.
- **Indiana added 4,800 private sector jobs, or 0.2 percent,** on a seasonally adjusted basis during April. In the prior month, Indiana added 10,000 jobs. Indiana private sector payroll employment has increased in **7 of the past 12 months.**
- Nationally, private sector payroll jobs **rose by 167,000 jobs in April, or 0.1 percent.** Indiana is tied for 39th in the nation for percentage gain in private sector payroll employment over the past 12 months.

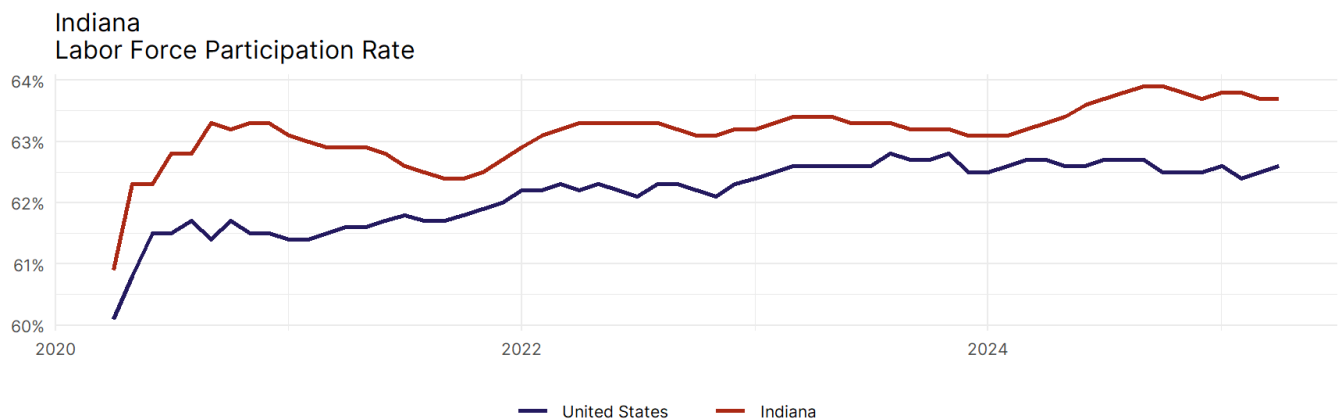


- The best performing sectors on a seasonally adjusted basis during April were **Leisure and Hospitality (2,900)** and **Trade, Transportation, and Utilities (2,700)**.
- The poorest performing sectors during the month were **Government (-1,500)** and **Manufacturing (-4,400)**.
- The best performing sectors during the last 12 months were **Education and Health Services (9,100)** and **Trade, Transportation, and Utilities (5,900)**.
- The poorest performing sectors during the last 12 months were **Financial Activities (-600)** and **Manufacturing (-6,100)**.

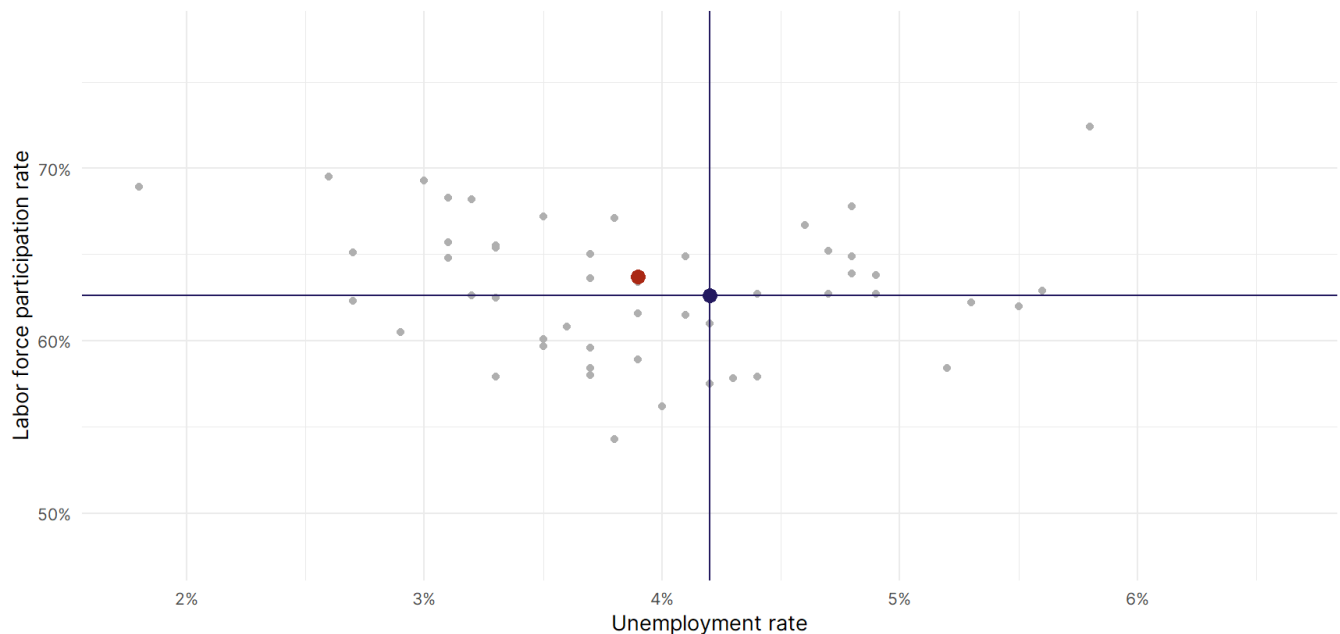
Indiana Labor Force

The labor force participation rate is the percentage of the civilian noninstitutionalized population age 16 and older who are employed or actively looking for work.

- The labor force participation rate in **Indiana remained unchanged at 63.7 percent in April**.
- **Indiana ranks 22nd** in the nation.
- The 10-year high for the labor force participation rate in Indiana was **65.2 percent** in June 2018, and the 10-year low was **60.9 percent** in April 2020.
- The national labor force participation rate **rose by 0.1 percentage points to 62.6 percent** in April.



Source: Bureau of Labor Statistics, data is seasonally adjusted



Source: Bureau of Labor Statistics, data is seasonally adjusted