



United States Congress

Joint Economic Committee

Est. 1946

Republicans

Representative David Schweikert, *Chairman*



Kentucky Employment Update



April 2025 | Released May 21, 2025

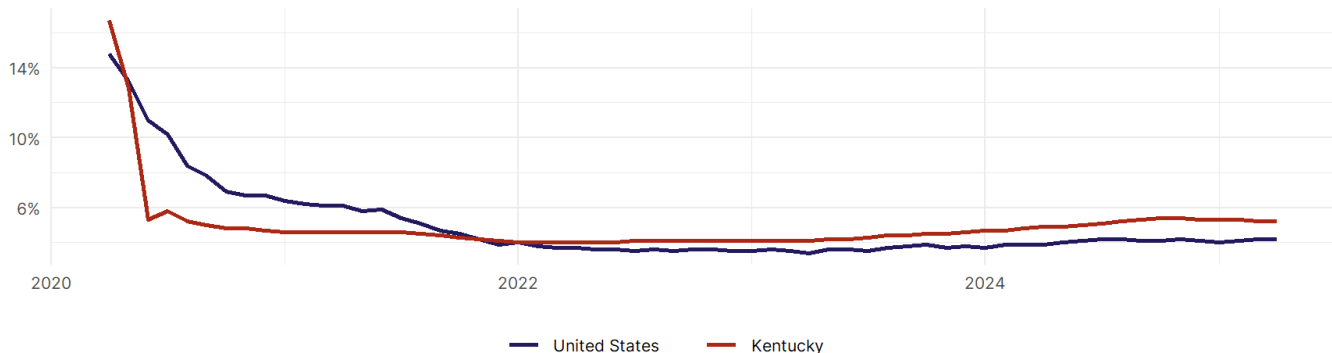
United States Employment Snapshot

- In April, among the 50 states and the District of Columbia **unemployment fell in 5, rose in 20, and remained unchanged in 26.**
- The highest unemployment rate was 5.8 percent in **District of Columbia**, and the lowest was 1.8 percent in **South Dakota**. Nationally, the unemployment rate remained unchanged in April.
- In April, **payroll jobs rose in 40 states and fell in 11.** The largest payroll job percent increase was 0.4 percent in **Mississippi**. The largest payroll job percent decline was 0.2 percent in **Vermont**.

Kentucky Employment Snapshot

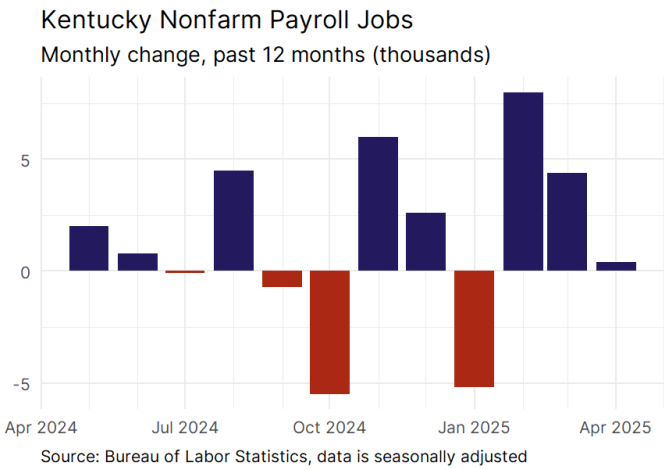
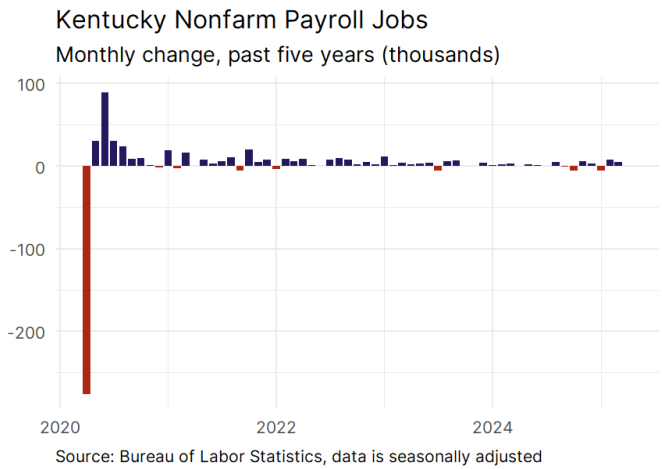
- In April, **Kentucky added 400 net payroll jobs** and the **unemployment rate remained unchanged at 5.2 percent.** In the prior month, Kentucky added 4,400 net payroll jobs.
- Over the past 12 months, **Kentucky added 17,200 net payroll jobs** and the **unemployment rate rose by 0.3 percentage points from 4.9 percent.**
- Nationally, nonfarm payrolls **rose by 177,000 in April, or 0.1 percent.** Kentucky **is tied for 27th** in the nation for percentage gain in nonfarm payroll employment over the past 12 months.
- In April, **Kentucky's private sector added 300 net private payroll jobs**, and over the past 12 months it added 12,700 private payroll jobs. In the prior month, Kentucky added 4,300 net private payroll jobs.
- In April, employment in Kentucky **rose by 2,550**, and over the past 12 months it rose by 25,533.
- **Kentucky's labor force participation rate remained steady at 58.4 percent** in April and **is tied for 43rd** in the nation. In the past 12 months, the labor force participation rate has risen by 0.4 percentage points.

Kentucky
Unemployment Rate

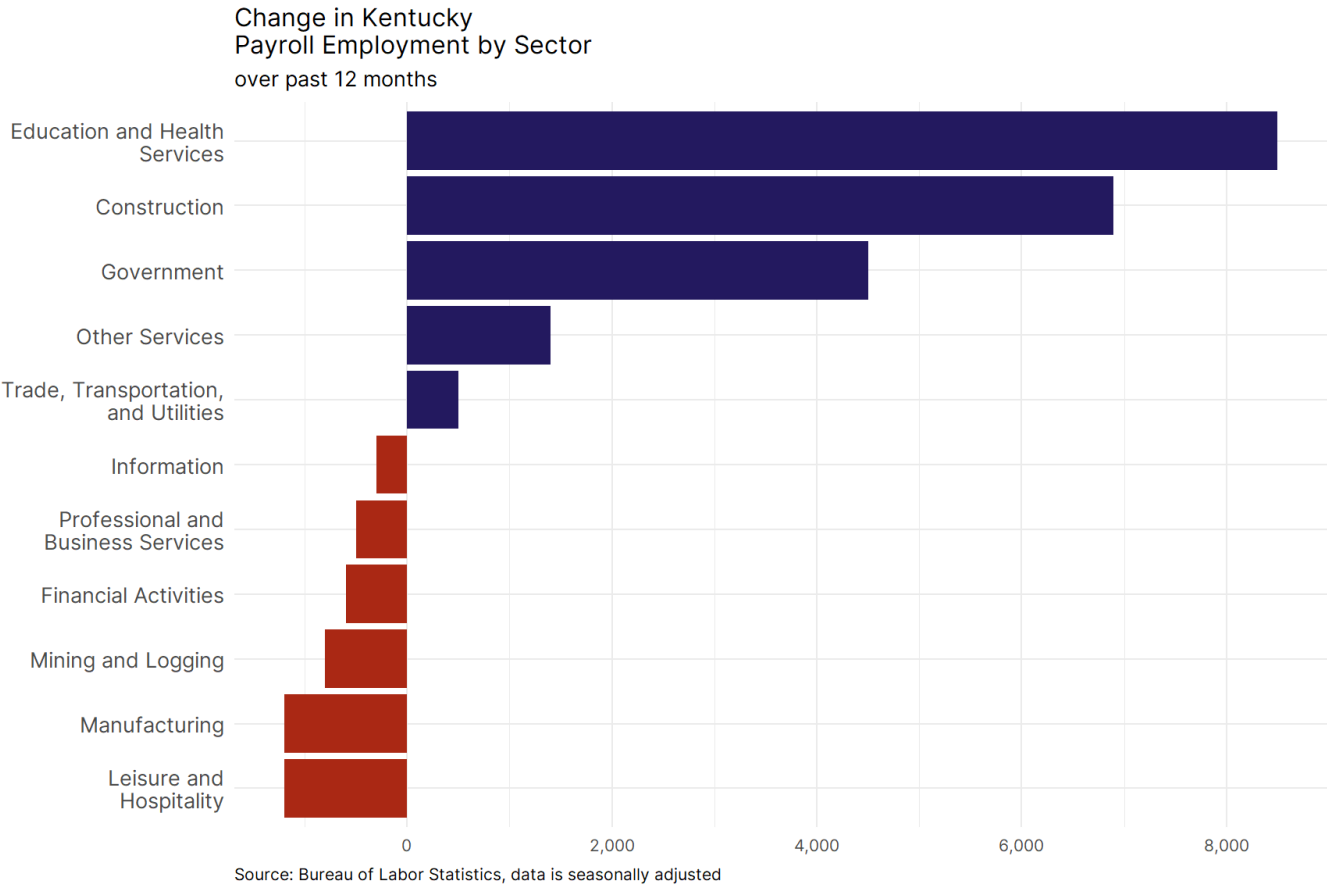


Source: Bureau of Labor Statistics, data is seasonally adjusted

Kentucky Payroll Employment



- **Kentucky added 400 net payroll jobs, or 0 percent**, on a seasonally adjusted basis during April. In the prior month, Kentucky added 4,400 jobs. Kentucky nonfarm payroll employment has increased in **8 of the past 12 months**.
- Nationally, nonfarm payrolls **rose by 177,000 in April, or 0.1 percent**. Kentucky is tied for 27th in the nation for percentage gain in nonfarm payroll employment over the past 12 months.
- **Kentucky added 300 private sector jobs, or 0 percent**, on a seasonally adjusted basis during April. In the prior month, Kentucky added 4,300 jobs. Kentucky private sector payroll employment has increased in **8 of the past 12 months**.
- Nationally, private sector payroll jobs **rose by 167,000 jobs in April, or 0.1 percent**. Kentucky is tied for 30th in the nation for percentage gain in private sector payroll employment over the past 12 months.



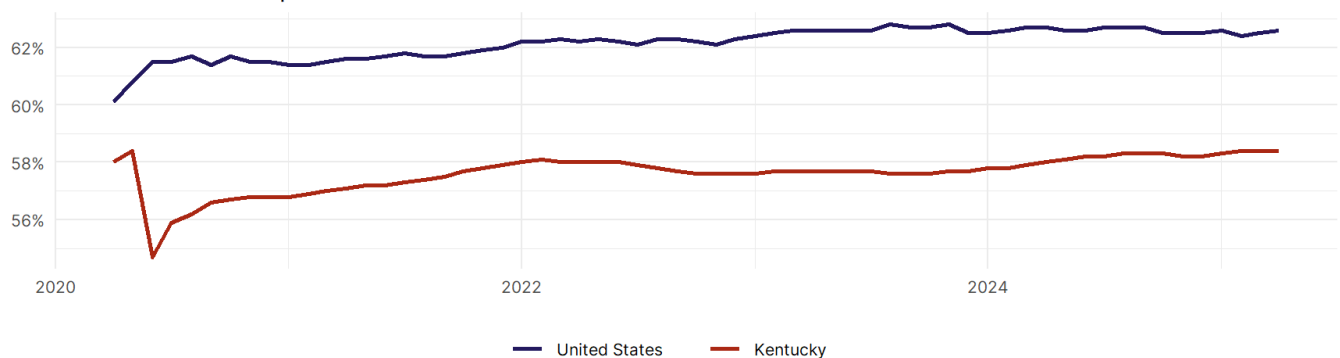
- The best performing sectors on a seasonally adjusted basis during April were **Professional and Business Services (2,500)** and **Education and Health Services (1,400)**.
- The poorest performing sectors during the month were **Trade, Transportation, and Utilities (-1,100)** and **Manufacturing (-2,400)**.
- The best performing sectors during the last 12 months were **Education and Health Services (8,500)** and **Construction (6,900)**.
- The poorest performing sectors during the last 12 months were **Mining and Logging (-800)** and **Manufacturing tied with Leisure and Hospitality (-1,200)**.

Kentucky Labor Force

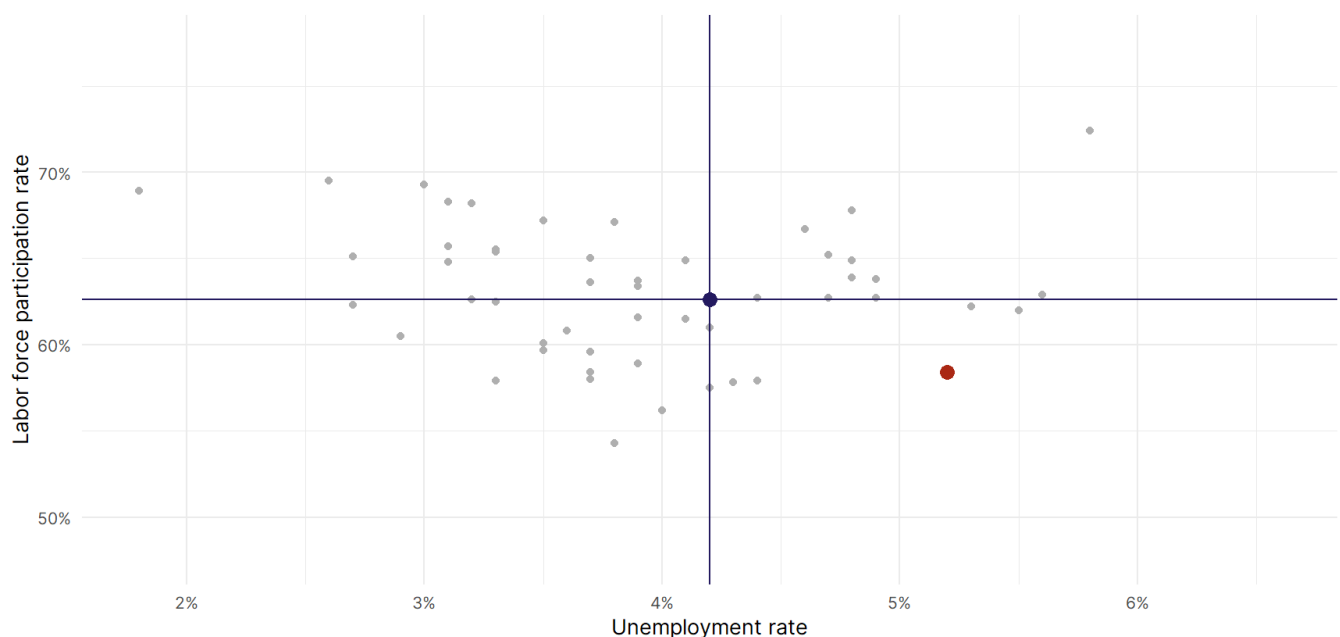
The labor force participation rate is the percentage of the civilian noninstitutionalized population age 16 and older who are employed or actively looking for work.

- The labor force participation rate in **Kentucky remained unchanged at 58.4 percent in April**.
- **Kentucky is tied for 43rd** in the nation.
- The 10-year high for the labor force participation rate in Kentucky was **59.1 percent** occurring in November 2019, and the 10-year low was **54.7 percent** in June 2020.
- The national labor force participation rate **rose by 0.1 percentage points to 62.6 percent** in April.

Kentucky
Labor Force Participation Rate



Source: Bureau of Labor Statistics, data is seasonally adjusted



Source: Bureau of Labor Statistics, data is seasonally adjusted