



United States Congress

Joint Economic Committee

Est. 1946

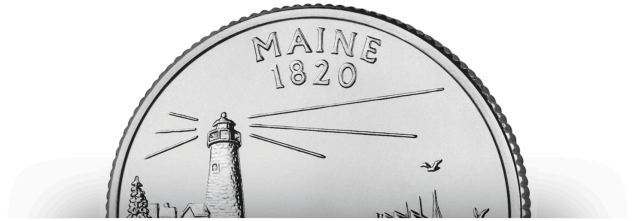
Republicans

Representative David Schweikert, *Chairman*



Maine

Employment Update



April 2025 | Released May 21, 2025

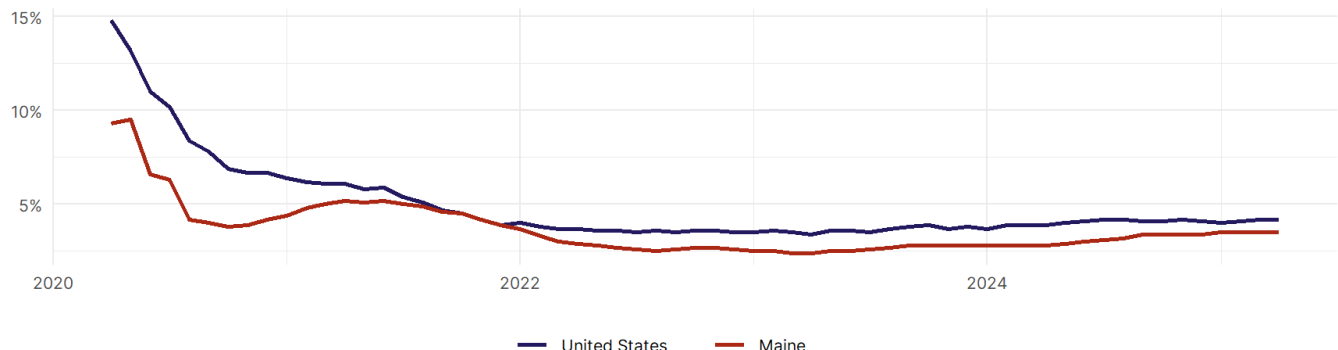
United States Employment Snapshot

- In April, among the 50 states and the District of Columbia **unemployment fell in 5, rose in 20, and remained unchanged in 26.**
- The highest unemployment rate was 5.8 percent in **District of Columbia**, and the lowest was 1.8 percent in **South Dakota**. Nationally, the unemployment rate remained unchanged in April.
- In April, **payroll jobs rose in 40 states and fell in 11.** The largest payroll job percent increase was 0.4 percent in **Mississippi**. The largest payroll job percent decline was 0.2 percent in **Vermont**.

Maine Employment Snapshot

- In April, **Maine added 800 net payroll jobs** and the **unemployment rate remained unchanged at 3.5 percent.** In the prior month, Maine remained unchanged with 0 net payroll jobs.
- Over the past 12 months, **Maine added 4,000 net payroll jobs** and the **unemployment rate rose by 0.7 percentage points from 2.8 percent.**
- Nationally, nonfarm payrolls **rose by 177,000 in April, or 0.1 percent.** Maine **is tied for 38th** in the nation for percentage gain in nonfarm payroll employment over the past 12 months.
- In April, **Maine's private sector remained unchanged with 0 net private payroll jobs**, and over the past 12 months it added 3,400 private payroll jobs. In the prior month, Maine lost 200 net private payroll jobs.
- In April, employment in Maine **fell by 995**, and over the past 12 months it rose by 889.
- **Maine's labor force participation rate fell to 60.1 percent** in April from 60.2 percent and **ranks 39th** in the nation. In the past 12 months, the labor force participation rate has risen by 0.2 percentage points.

Maine
Unemployment Rate

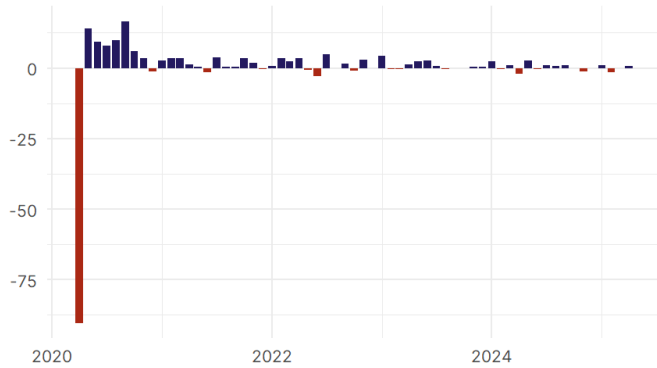


Source: Bureau of Labor Statistics, data is seasonally adjusted

Maine Payroll Employment

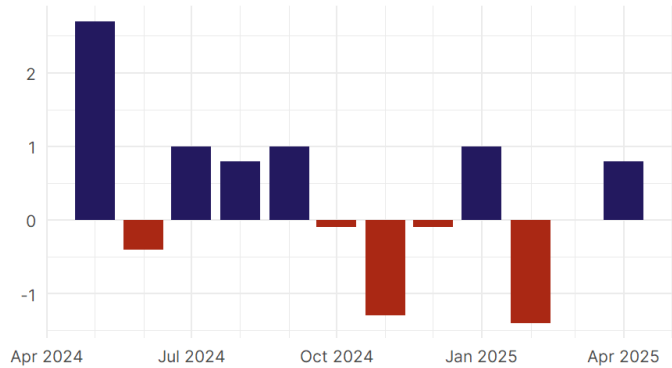
Maine Nonfarm Payroll Jobs

Monthly change, past five years (thousands)



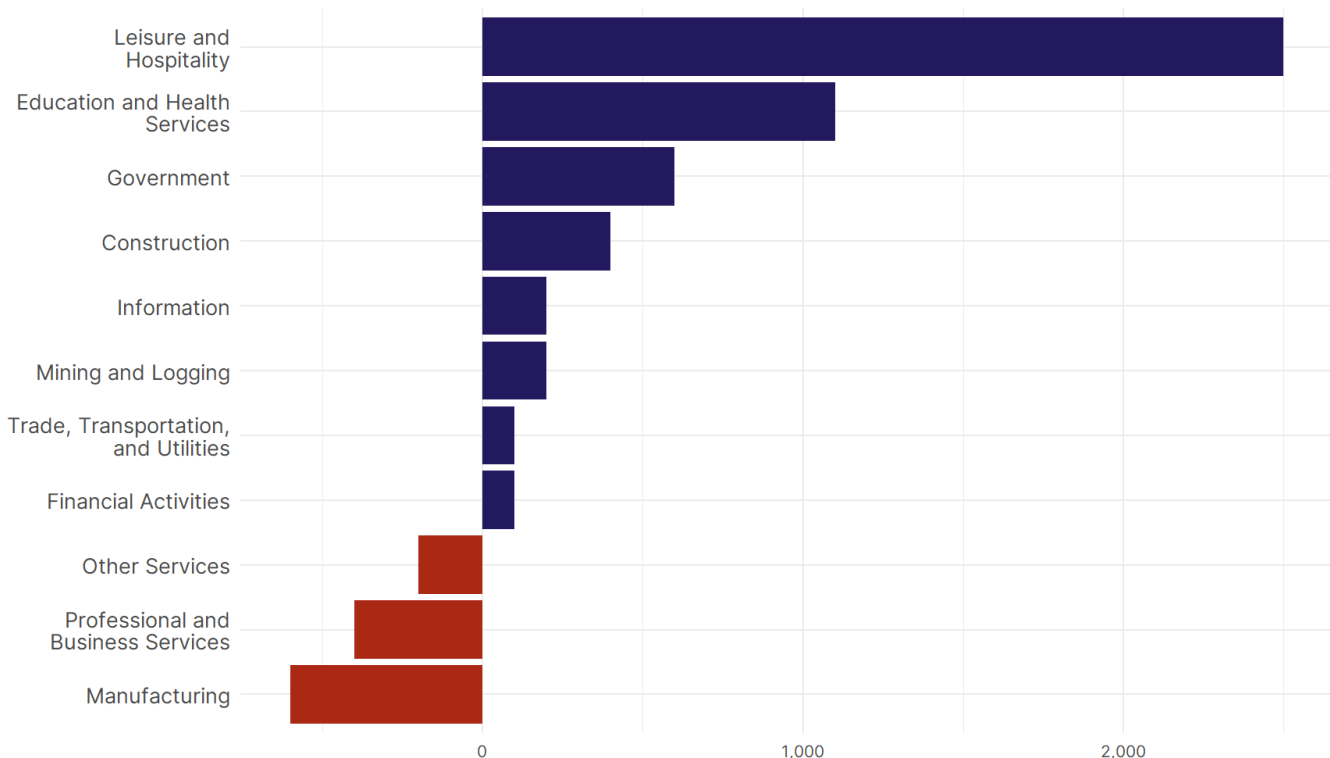
Maine Nonfarm Payroll Jobs

Monthly change, past 12 months (thousands)



- **Maine added 800 net payroll jobs, or 0.1 percent,** on a seasonally adjusted basis during April. In the prior month, Maine remained unchanged with 0 jobs. Maine nonfarm payroll employment has increased in **6 of the past 12 months**.
- Nationally, nonfarm payrolls **rose by 177,000 in April, or 0.1 percent**. Maine is tied for 38th in the nation for percentage gain in nonfarm payroll employment over the past 12 months.
- **Maine remained unchanged with 0 private sector jobs, or 0 percent,** on a seasonally adjusted basis during April. In the prior month, Maine lost 200 jobs. Maine private sector payroll employment has increased in **6 of the past 12 months**.
- Nationally, private sector payroll jobs **rose by 167,000 jobs in April, or 0.1 percent**. Maine is tied for 35th in the nation for percentage gain in private sector payroll employment over the past 12 months.

Change in Maine Payroll Employment by Sector over past 12 months

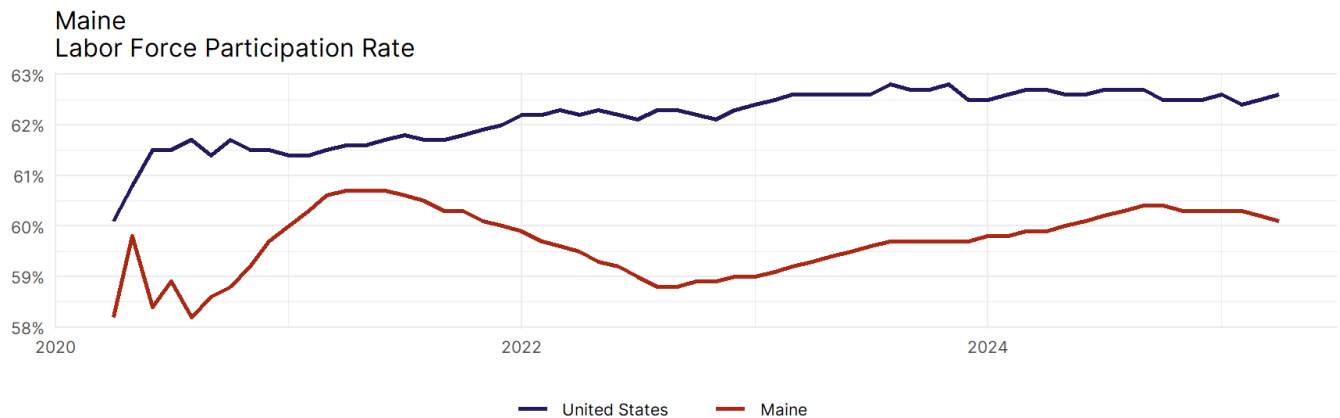


- The best performing sectors on a seasonally adjusted basis during April were **Government (800)** and **Education and Health Services (700)**.
- The poorest performing sectors during the month were **Other Services (-300)** and **Construction (-400)**.
- The best performing sectors during the last 12 months were **Leisure and Hospitality (2,500)** and **Education and Health Services (1,100)**.
- The poorest performing sectors during the last 12 months were **Professional and Business Services (-400)** and **Manufacturing (-600)**.

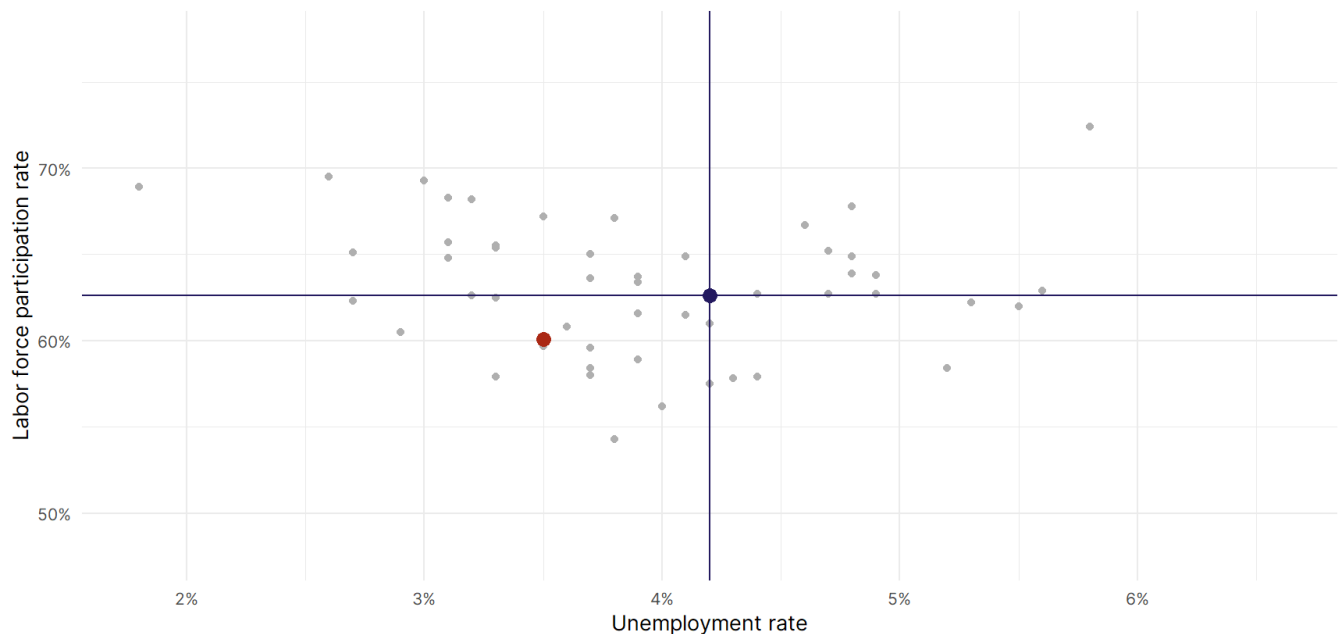
Maine Labor Force

The labor force participation rate is the percentage of the civilian noninstitutionalized population age 16 and older who are employed or actively looking for work.

- The labor force participation rate in **Maine fell to 60.1 percent in April from 60.2 percent in the prior month.**
- **Maine ranks 39th** in the nation.
- The 10-year high for the labor force participation rate in Maine was **63.7 percent** occurring in June 2017, and the 10-year low was **58.2 percent** occurring in August 2020.
- The national labor force participation rate **rose by 0.1 percentage points to 62.6 percent** in April.



Source: Bureau of Labor Statistics, data is seasonally adjusted



Source: Bureau of Labor Statistics, data is seasonally adjusted