



United States Congress

# Joint Economic Committee

Est. 1946

Republicans

Representative David Schweikert, *Chairman*



## Maryland Employment Update



April 2025 | Released May 21, 2025

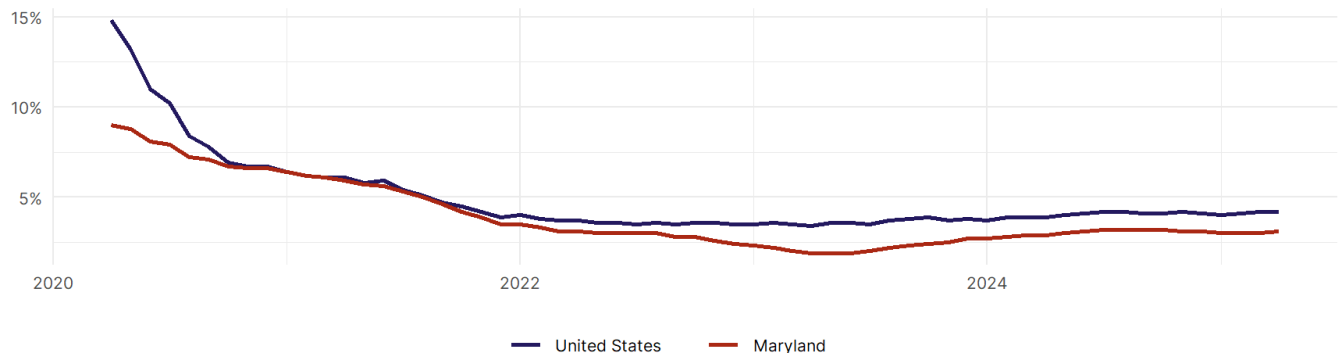
### United States Employment Snapshot

- In April, among the 50 states and the District of Columbia **unemployment fell in 5, rose in 20, and remained unchanged in 26.**
- The highest unemployment rate was 5.8 percent in **District of Columbia**, and the lowest was 1.8 percent in **South Dakota**. Nationally, the unemployment rate remained unchanged in April.
- In April, **payroll jobs rose in 40 states and fell in 11.** The largest payroll job percent increase was 0.4 percent in **Mississippi**. The largest payroll job percent decline was 0.2 percent in **Vermont**.

### Maryland Employment Snapshot

- In April, **Maryland added 2,300 net payroll jobs** and the **unemployment rate rose by 0.1 percentage point to 3.1 percent.** In the prior month, Maryland lost 2,000 net payroll jobs.
- Over the past 12 months, **Maryland added 24,200 net payroll jobs** and the **unemployment rate rose by 0.2 percentage points from 2.9 percent.**
- Nationally, nonfarm payrolls **rose by 177,000 in April, or 0.1 percent.** Maryland **is tied for 25th** in the nation for percentage gain in nonfarm payroll employment over the past 12 months.
- In April, **Maryland's private sector added 3,600 net private payroll jobs**, and over the past 12 months it added 18,100 private payroll jobs. In the prior month, Maryland added 1,200 net private payroll jobs.
- In April, employment in Maryland **fell by 4,862**, and over the past 12 months it fell by 13,034.
- **Maryland's labor force participation rate fell to 64.8 percent** in April from 64.9 percent and **ranks 19th** in the nation. In the past 12 months, the labor force participation rate has fallen by 0.6 percentage points.

Maryland  
Unemployment Rate

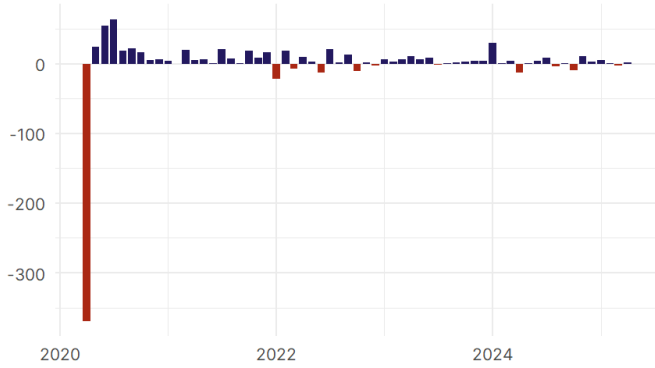


Source: Bureau of Labor Statistics, data is seasonally adjusted

## Maryland Payroll Employment

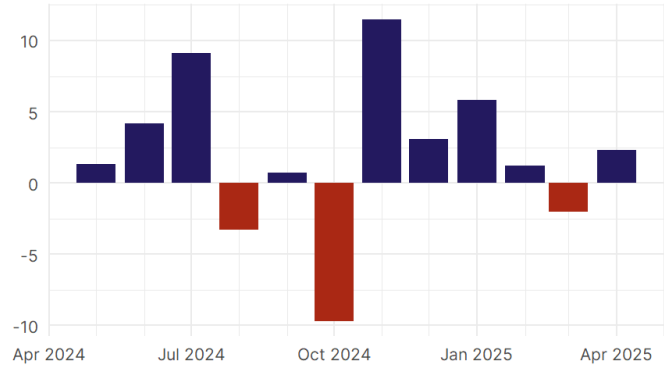
Maryland Nonfarm Payroll Jobs

Monthly change, past five years (thousands)



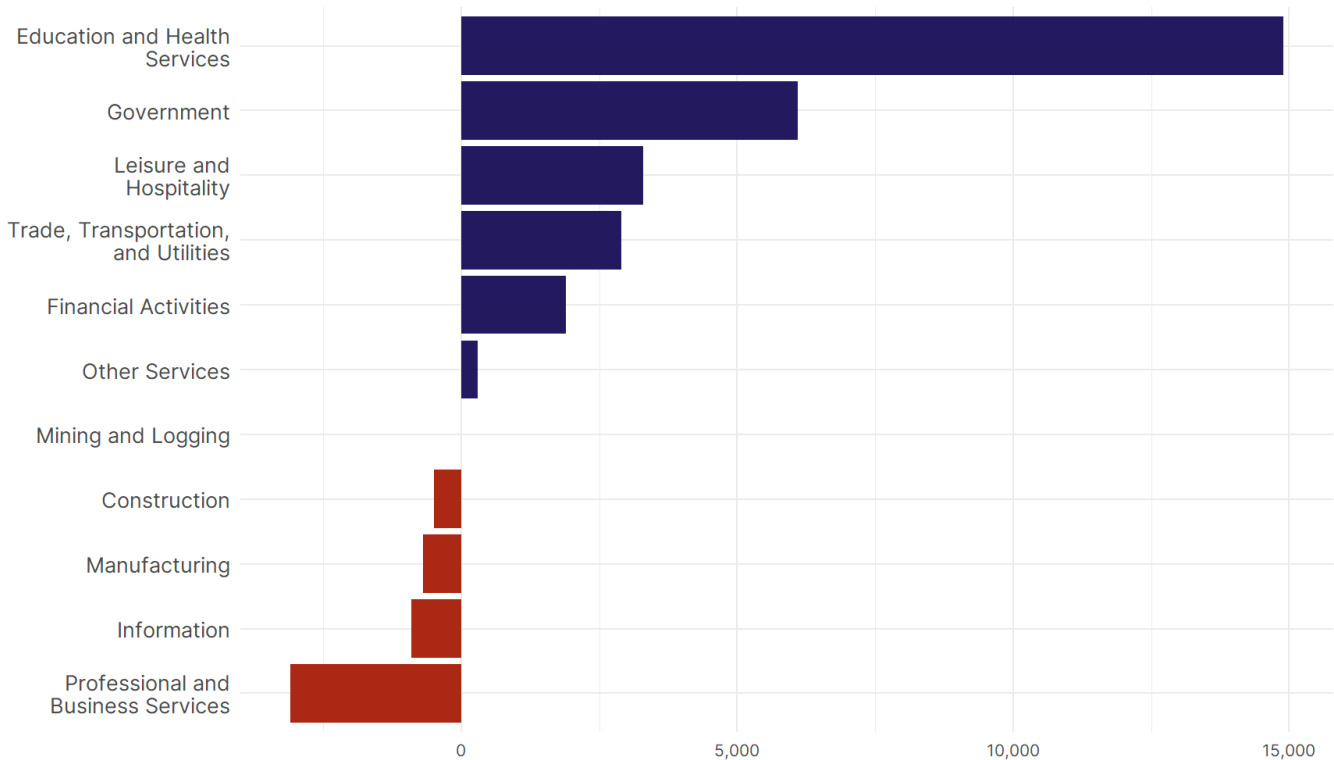
Maryland Nonfarm Payroll Jobs

Monthly change, past 12 months (thousands)



- **Maryland added 2,300 net payroll jobs, or 0.1 percent,** on a seasonally adjusted basis during April. In the prior month, Maryland lost 2,000 jobs. Maryland nonfarm payroll employment has increased in **9 of the past 12 months.**
- Nationally, nonfarm payrolls **rose by 177,000 in April, or 0.1 percent.** Maryland is tied for 25th in the nation for percentage gain in nonfarm payroll employment over the past 12 months.
- **Maryland added 3,600 private sector jobs, or 0.2 percent,** on a seasonally adjusted basis during April. In the prior month, Maryland added 1,200 jobs. Maryland private sector payroll employment has increased in **9 of the past 12 months.**
- Nationally, private sector payroll jobs **rose by 167,000 jobs in April, or 0.1 percent.** Maryland is tied for 26th in the nation for percentage gain in private sector payroll employment over the past 12 months.

Change in Maryland Payroll Employment by Sector over past 12 months

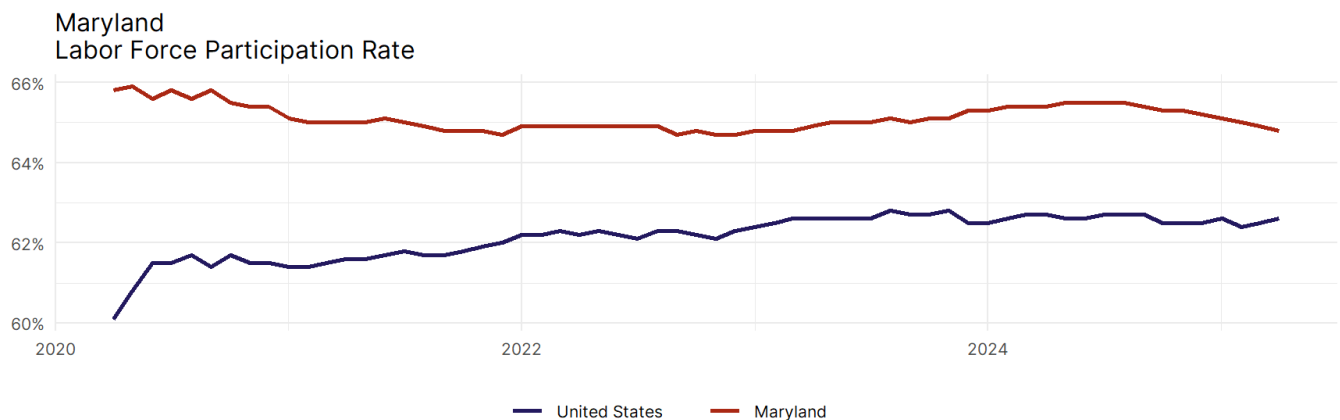


- The best performing sectors on a seasonally adjusted basis during April were **Construction (1,700)** and **Leisure and Hospitality (1,500)**.
- The poorest performing sectors during the month were **Manufacturing (-800)** and **Government (-1,300)**.
- The best performing sectors during the last 12 months were **Education and Health Services (14,900)** and **Government (6,100)**.
- The poorest performing sectors during the last 12 months were **Information (-900)** and **Professional and Business Services (-3,100)**.

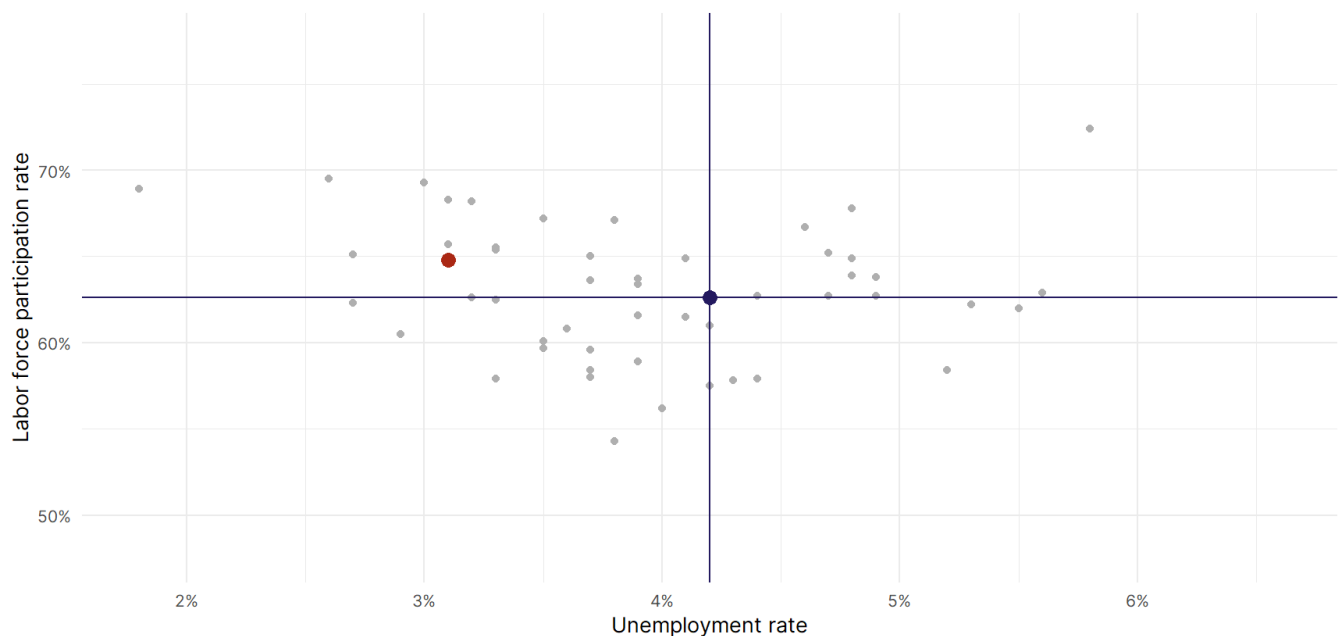
### Maryland Labor Force

The labor force participation rate is the percentage of the civilian noninstitutionalized population age 16 and older who are employed or actively looking for work.

- The labor force participation rate in **Maryland fell to 64.8 percent in April from 64.9 percent in the prior month**.
- **Maryland ranks 19th** in the nation.
- The 10-year high for the labor force participation rate in Maryland was **69.3 percent** occurring in February 2020, and the 10-year low was **64.7 percent** occurring in December 2022.
- The national labor force participation rate **rose by 0.1 percentage points to 62.6 percent** in April.



Source: Bureau of Labor Statistics, data is seasonally adjusted



Source: Bureau of Labor Statistics, data is seasonally adjusted