



United States Congress

# Joint Economic Committee

Est. 1946

Republicans

Representative David Schweikert, *Chairman*



## Michigan Employment Update



April 2025 | Released May 21, 2025

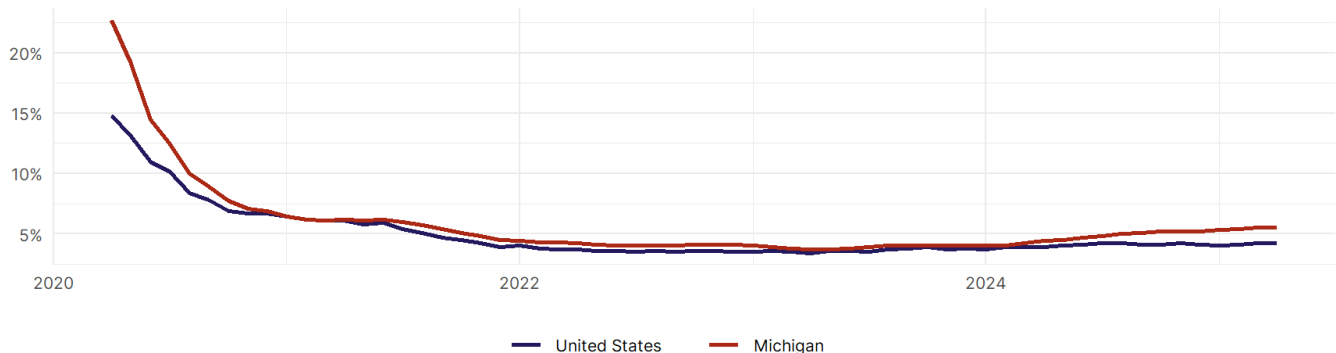
### United States Employment Snapshot

- In April, among the 50 states and the District of Columbia **unemployment fell in 5, rose in 20, and remained unchanged in 26.**
- The highest unemployment rate was 5.8 percent in **District of Columbia**, and the lowest was 1.8 percent in **South Dakota**. Nationally, the unemployment rate remained unchanged in April.
- In April, **payroll jobs rose in 40 states and fell in 11.** The largest payroll job percent increase was 0.4 percent in **Mississippi**. The largest payroll job percent decline was 0.2 percent in **Vermont**.

### Michigan Employment Snapshot

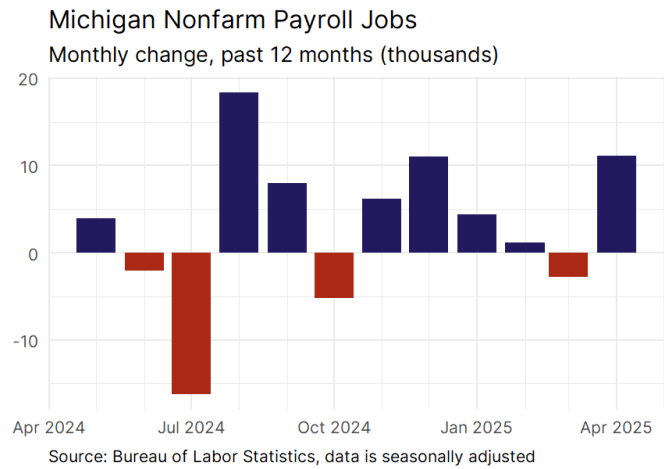
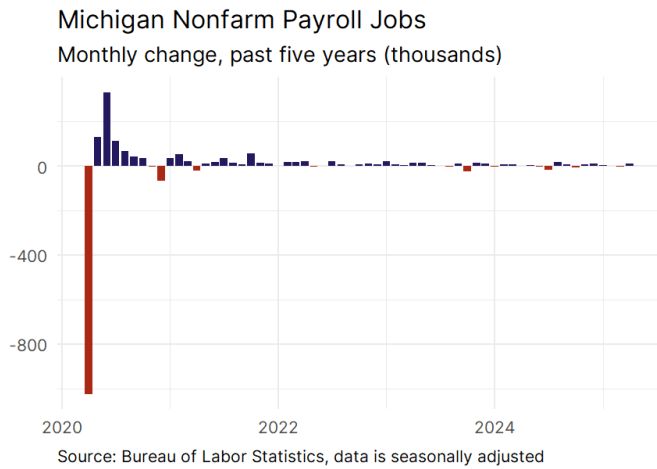
- In April, **Michigan added 11,100 net payroll jobs** and the **unemployment rate remained unchanged at 5.5 percent.** In the prior month, Michigan lost 2,800 net payroll jobs.
- Over the past 12 months, **Michigan added 37,900 net payroll jobs** and the **unemployment rate rose by 1.1 percentage points from 4.4 percent.**
- Nationally, nonfarm payrolls **rose by 177,000 in April, or 0.1 percent.** Michigan **is tied for 27th** in the nation for percentage gain in nonfarm payroll employment over the past 12 months.
- In April, **Michigan's private sector added 9,700 net private payroll jobs**, and over the past 12 months it added 28,600 private payroll jobs. In the prior month, Michigan lost 4,400 net private payroll jobs.
- In April, employment in Michigan **fell by 2,770**, and over the past 12 months it fell by 8,847.
- **Michigan's labor force participation rate remained steady at 62 percent** in April and **ranks 33rd** in the nation. In the past 12 months, the labor force participation rate has risen by 0.3 percentage points.

Michigan  
Unemployment Rate

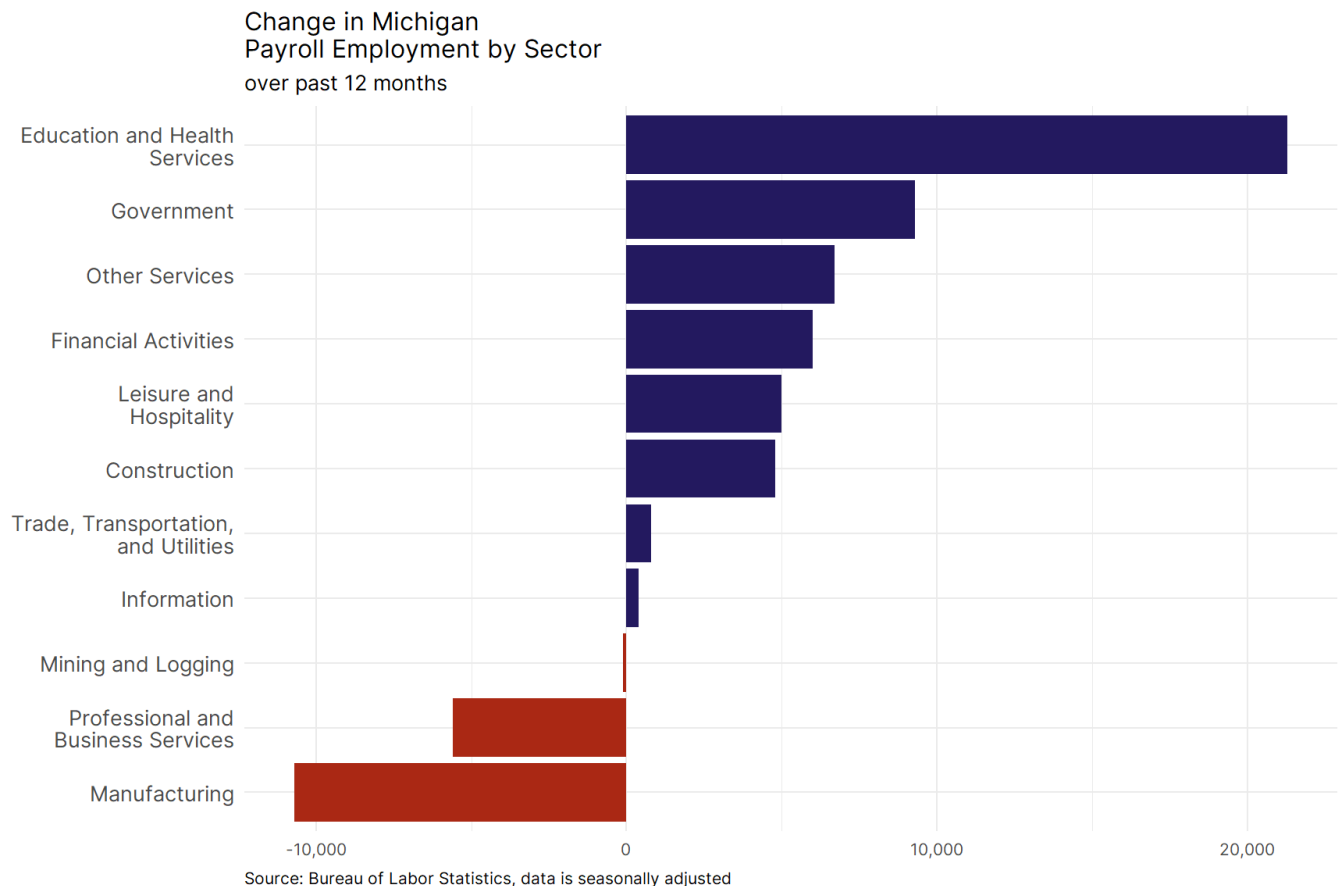


Source: Bureau of Labor Statistics, data is seasonally adjusted

## Michigan Payroll Employment



- **Michigan added 11,100 net payroll jobs, or 0.2 percent,** on a seasonally adjusted basis during April. In the prior month, Michigan lost 2,800 jobs. Michigan nonfarm payroll employment has increased in **8 of the past 12 months.**
- Nationally, nonfarm payrolls **rose by 177,000 in April, or 0.1 percent.** Michigan is tied for 27th in the nation for percentage gain in nonfarm payroll employment over the past 12 months.
- **Michigan added 9,700 private sector jobs, or 0.2 percent,** on a seasonally adjusted basis during April. In the prior month, Michigan lost 4,400 jobs. Michigan private sector payroll employment has increased in **8 of the past 12 months.**
- Nationally, private sector payroll jobs **rose by 167,000 jobs in April, or 0.1 percent.** Michigan is tied for 30th in the nation for percentage gain in private sector payroll employment over the past 12 months.



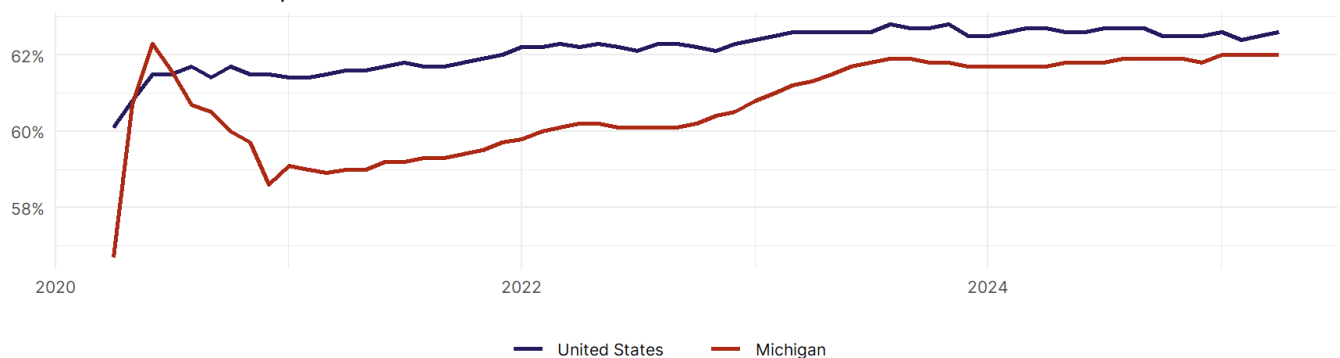
- The best performing sectors on a seasonally adjusted basis during April were **Education and Health Services (2,600)** and **Construction (1,900)**.
- The poorest performing sectors during the month were **Financial Activities (-100)** and **Mining and Logging (-100)**.
- The best performing sectors during the last 12 months were **Education and Health Services (21,300)** and **Government (9,300)**.
- The poorest performing sectors during the last 12 months were **Professional and Business Services (-5,600)** and **Manufacturing (-10,700)**.

### Michigan Labor Force

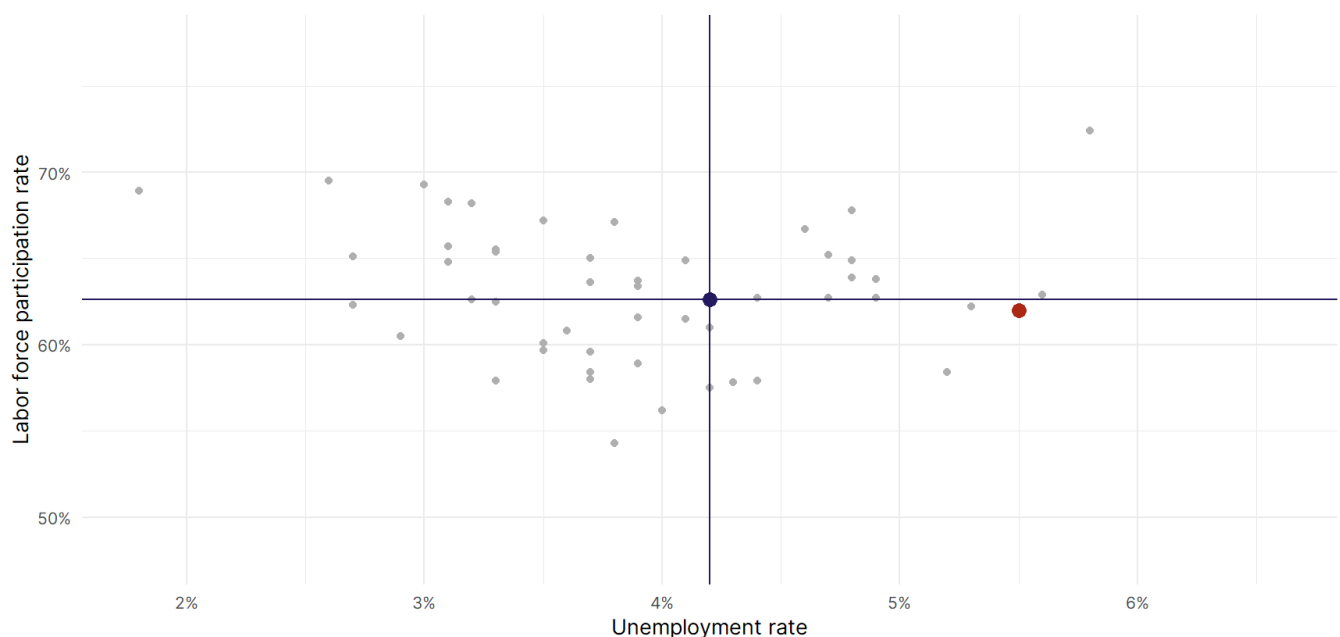
The labor force participation rate is the percentage of the civilian noninstitutionalized population age 16 and older who are employed or actively looking for work.

- The labor force participation rate in **Michigan remained unchanged at 62 percent in April**.
- **Michigan ranks 33rd** in the nation.
- The 10-year high for the labor force participation rate in Michigan was **62.3 percent** in June 2020, and the 10-year low was **56.7 percent** in April 2020.
- The national labor force participation rate **rose by 0.1 percentage points to 62.6 percent** in April.

Michigan  
Labor Force Participation Rate



Source: Bureau of Labor Statistics, data is seasonally adjusted



Source: Bureau of Labor Statistics, data is seasonally adjusted